

Mini SMP Female to SMA Male Cable Using PE-SR405FLJ Coax with HeatShrink

PE3W00453/HS



Configuration

- Connector 1: Mini SMP Female
- Connector 2: SMA Male
- Cable Type: PE-SR405FLJ
- Coax Flex Type: Formable

Features

- Max Frequency 18 GHz
- Shielding Effectivity > 100 dB
- 69.5% Phase Velocity
- FEP Jacket



Applications

- General Purpose
- Laboratory Use

Description

Pasternack's PE3W00453/HS Mini SMP female to SMA male cable using PE-SR405FLJ coax is part of our full line of RF components available for same-day shipping. Pasternack's formable RF cable assemblies provide an alternative to costly pre-formed semi-rigid assemblies since they are hand formable. This Pasternack Mini SMP to SMA cable assembly has a female to male gender configuration with 50 ohm formable PE-SR405FLJ coax. The PE3W00453/HS Mini SMP female to SMA male cable assembly operates to 18 GHz.

Custom versions of most RF cable assemblies can be built and shipped same day. Custom cable assembly lengths can be obtained by specifying the desired length on the web site at time of order or by contacting a sales representative. Other available RF cable assembly value added services include connector orientation or clocking, heat shrink booting and custom labeling. RF testing can also be performed to document the electrical performance of your cable assembly.

Electrical Specifications

Description	Minimum	Typical	Maximum	Units
Frequency Range	DC		18	GHz
VSWR			1.4:1	
Velocity of Propagation		69.5		%
RF Shielding	100			dB
Group Delay		1.43 [4.69]		ns/ft [ns/m]
Capacitance		29 [95.14]		pF/ft [pF/m]
DC Resistance Inner Conductor		65.7 [215.55]		Ohms/1000ft [Ohms/Km]
DC Resistance Outer Conductor		10.2 [33.46]		Ohms/1000ft [Ohms/Km]

Specifications by Frequency

Mini SMP Female to SMA Male Cable Using PE-SR405FLJ Coax with HeatShrink



PE3W00453/HS

Part Number	Length	Description	F1	F2	F3	F4	F5	Units	Weight (lbs)
		Frequency	1000	2000	4500	9000	18000	MHz	
PE3W00453/HS	Custom Lengths Available	Insertion Loss (Typ.)	0.225	0.317	0.548	0.768	1.122	dB/ft	
			0.74	1.05	1.8	2.52	3.69	dB/m	
PE3W00453/HS-6	6 inch	Insertion Loss (Typ.)	0.32	0.36	0.48	0.59	0.77	dB	0.024
PE3W00453/HS-9	9 inch	Insertion Loss (Typ.)	0.37	0.44	0.62	0.78	1.05	dB	0.028
PE3W00453/HS-12	12 inch	Insertion Loss (Typ.)	0.43	0.52	0.75	0.97	1.33	dB	0.031
PE3W00453/HS-18	18 inch	Insertion Loss (Typ.)	0.54	0.68	1.03	1.36	1.89	dB	0.039
PE3W00453/HS-24	24 inch	Insertion Loss (Typ.)	0.65	0.84	1.3	1.74	2.45	dB	0.046

The insertion loss data for the base model does not include loss due to the connectors. Each length includes insertion loss due to the connectors.

Loss due to Connector 1:	0.1 dB
Loss due to Connector 2:	0.1 dB
Base Weight:	0.031 pounds
Additional Weight per Inch:	0.00117 pounds

Mechanical Specifications

Cable Assembly

Weight	0.031 lbs [14.06 g]
--------	---------------------

Cable

Cable Type	PE-SR405FLJ
Impedance	50 Ohms
Inner Conductor Type	Solid
Inner Conductor Material and Plating	Copper Clad Steel, Silver
Dielectric Type	PTFE
Number of Shields	1
Outer Conductor 1 Material and Plating	Tinned Copper Composite Braid
Jacket Material	FEP, Black
Jacket Diameter	0.105 in [2.67 mm]
One Time Minimum Bend Radius	0.5 in [12.7 mm]
Repeated Minimum Bend Radius	0.787 in [19.99 mm]

Mini SMP Female to SMA Male Cable Using PE-SR405FLJ Coax with HeatShrink

PE3W00453/HS



Connectors

Description	Connector 1	Connector 2
Type	Mini SMP Female	SMA Male
Specification		MIL-STD-348A
Impedance	50 Ohms	50 Ohms
Configuration	Straight	Straight
Mating Cycles		500
Contact Material and Plating	Beryllium Copper, Gold	Brass, Gold
Contact Plating Specification	MIL-G-45204	50 µin minimum
Dielectric Type	PTFE	PTFE
Body Material and Plating	Beryllium Copper, Gold	Stainless Steel, Gold
Body Plating Specification	MIL-G-45204	10 µin minimum
Coupling Nut Material and Plating		Brass, Nickel
Coupling Nut Plating Specification		100 µin minimum
Hex Size		5/16 inch
Torque		3 in-lbs 0.34 Nm

Environmental Specifications

Operating Range Temperature -55 to +125 deg C

Compliance Certifications (see [product page](#) for current document)

Plotted and Other Data

Notes:

Mini SMP Female to SMA Male Cable Using PE-SR405FLJ Coax with HeatShrink



PE3W00453/HS

Typical Performance Data

How to Order

Part Number Configuration: **PE3W00453/HS - xx uu**

Unit of Measure:
cm = Centimeters
<blank> = Inches

Length
Base Number

Example: PE3W00453/HS-12 = 12 inches long cable
PE3W00453/HS-100cm = 100 cm long cable

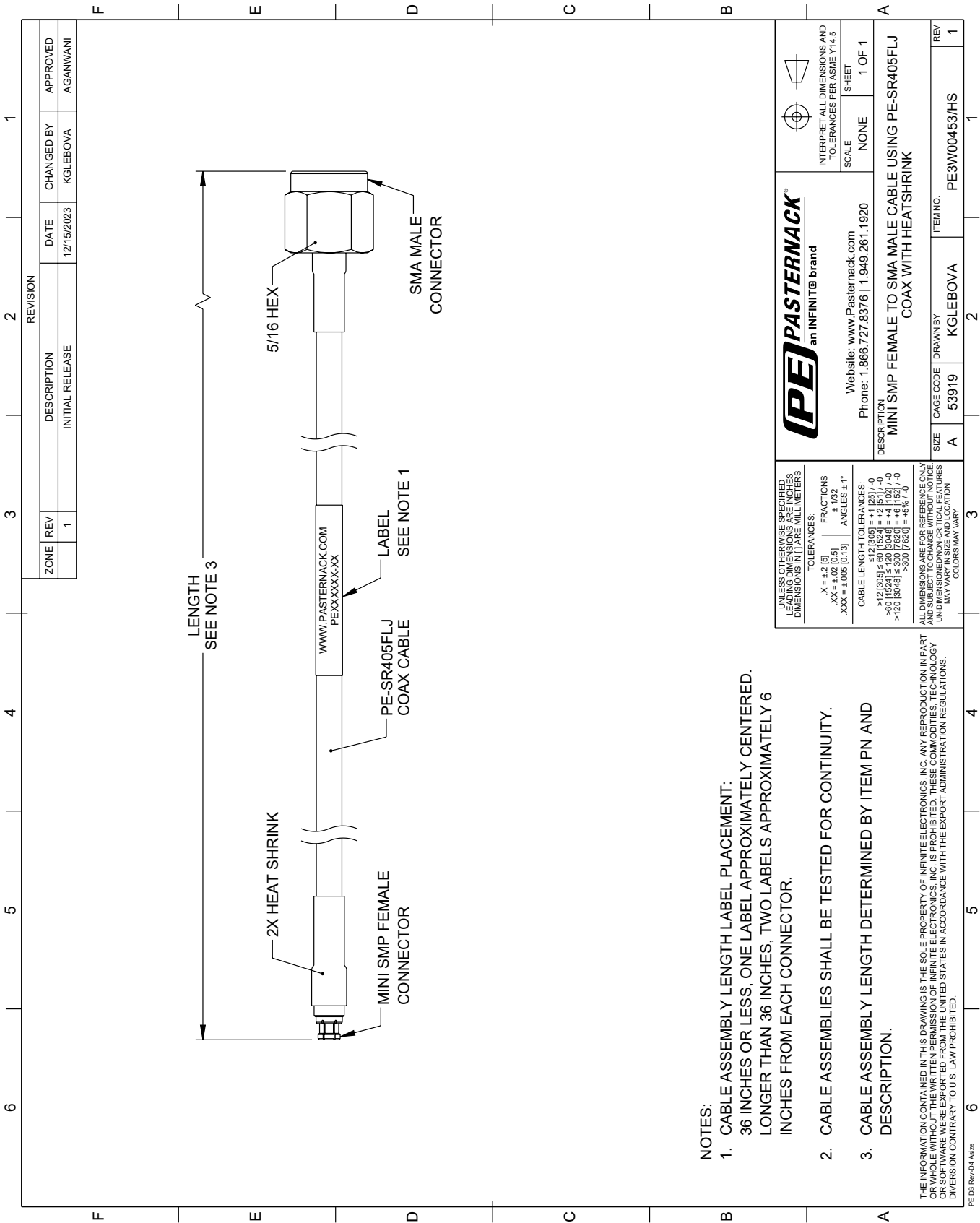
Mini SMP Female to SMA Male Cable Using PE-SR405FLJ Coax with HeatShrink from Pasternack Enterprises has same day shipment for domestic and International orders. Our RF, microwave and millimeter wave products maintain a 99.4% availability and are part of the broadest selection in the industry.

Click the following link (or enter part number in "SEARCH" on website) to obtain additional part information including price, inventory and certifications: [Mini SMP Female to SMA Male Cable Using PE-SR405FLJ Coax with HeatShrink PE3W00453/HS](https://www.pasternack.com/mini-smp-female-to-sma-male-cable-using-pe-sr405flj-coax-with-heatshrink-pe3w00453-hs-p.aspx)

URL: <https://www.pasternack.com/mini-smp-female-to-sma-male-cable-using-pe-sr405flj-coax-with-heatshrink-pe3w00453-hs-p.aspx>

The information contained within this document is accurate to the best of our knowledge and representative of the part described herein. It may be necessary to make modifications to the part and/or the documentation of the part in order to implement improvements. Pasternack Enterprises reserves the right to make such changes as required. Unless otherwise stated, all specifications are nominal. Pasternack Enterprises does not make any representation or warranty regarding the suitability of the part described herein for any particular purpose, and Pasternack Enterprises does not assume liability arising out of the use of any part or document.

PE3W00453/HS CAD Drawing
Mini SMP Female to SMA Male Cable Using PE-SR405FLJ Coax with HeatShrink



- NOTES:
- 1. CABLE ASSEMBLY LENGTH LABEL PLACEMENT: 36 INCHES OR LESS, ONE LABEL APPROXIMATELY CENTERED. LONGER THAN 36 INCHES, TWO LABELS APPROXIMATELY 6 INCHES FROM EACH CONNECTOR.
 - 2. CABLE ASSEMBLIES SHALL BE TESTED FOR CONTINUITY.
 - 3. CABLE ASSEMBLY LENGTH DETERMINED BY ITEM PN AND DESCRIPTION.