



SMA Female to Black FAKRA Jack Right Angle Cable Using RG174 Coax

RF Cable Assemblies Technical Data Sheet

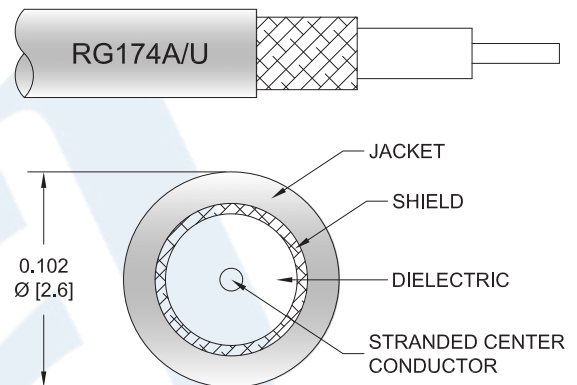
PE3W00917

Configuration

- Connector 1: SMA Female
- Connector 2: FAKRA Jack Right Angle
- Cable Type: RG174
- Coax Flex Type: Flexible

Features

- Max Frequency 1 GHz
- 66% Phase Velocity
- PVC Jacket



Applications

- General Purpose
- Laboratory Use

Description

Pasternack's PE3W00917 SMA female to black FAKRA jack right angle cable using RG174 coax is part of our full line of RF components available for same-day shipping. Pasternack's flexible RF cable assemblies are ideal for applications where tight bends and flexure are required. This Pasternack SMA to FAKRA cable assembly has a female to jack gender configuration with 50 ohm flexible RG174 coax. The PE3W00917 SMA female to FAKRA jack cable assembly operates to 1 GHz. The right angle FAKRA interface on the RG174 cable allows for easier connections in tight spaces.

Custom versions of most RF cable assemblies can be built and shipped same day. Custom cable assembly lengths can be obtained by specifying the desired length on the web site at time of order or by contacting a sales representative. Other available RF cable assembly value added services include connector orientation or clocking, heat shrink booting and custom labeling. RF testing can also be performed to document the electrical performance of your cable assembly.

Click the following link (or enter part number in "SEARCH" on website) to obtain additional part information including price, inventory and certifications: [SMA Female to Black FAKRA Jack Right Angle Cable Using RG174 Coax PE3W00917](#)



SMA Female to Black FAKRA Jack Right Angle
Cable Using RG174 Coax

RF Cable Assemblies Technical Data Sheet

PE3W00917

Electrical Specifications

Description	Minimum	Typical	Maximum	Units
Frequency Range	DC		1,000	MHz
VSWR			1.4:1	
Velocity of Propagation		66		%
Capacitance		30.8 [101.05]		pF/ft [pF/m]

Specifications by Frequency

Description	F1	F2	F3	F4	F5	Units
Frequency	100	250	500	1,000		MHz
Insertion Loss (Typ.)	0.084	0.137	0.211	0.32		dB/ft
	0.28	0.45	0.69	1.05		dB/m

Electrical Specification Notes:

Insertion Loss does not include the loss of the connectors. Insertion Loss is estimated as 0.1 dB for the SMA female connector and 0.2 dB for the FAKRA jack connector.

Mechanical Specifications

Cable Assembly

Weight 0.031 lbs [14.06 g]

Cable

Cable Type RG174
Impedance 50 Ohms
Inner Conductor Type Stranded
Inner Conductor Material and Plating Copper Clad Steel
Dielectric Type PE (LD)
Number of Shields 1
Shield Layer 1 Tinned Copper Braid
Jacket Material PVC, Black
Jacket Diameter 0.11 in [2.79 mm]

Click the following link (or enter part number in "SEARCH" on website) to obtain additional part information including price, inventory and certifications: [SMA Female to Black FAKRA Jack Right Angle Cable Using RG174 Coax PE3W00917](#)



SMA Female to Black FAKRA Jack Right Angle
Cable Using RG174 Coax

RF Cable Assemblies Technical Data Sheet

PE3W00917

Connectors

Description	Connector 1	Connector 2
Type	SMA Female	FAKRA Jack Right Angle
Specification	MIL-STD-348	
Impedance	50 Ohms	50 Ohms
Configuration	Straight	Right Angle
Mating Cycles	100	
Contact Material and Plating	Beryllium Copper, Gold	Phosphor Bronze, Gold
Dielectric Type	Teflon	Teflon/Delrin
Outer Conductor Material and Plating		Brass, Nickel
Body Material and Plating	Brass, Nickel	Plastic

Compliance Certifications (see [product page](#) for current document)

Plotted and Other Data

Notes:

Click the following link (or enter part number in "SEARCH" on website) to obtain additional part information including price, inventory and certifications: [SMA Female to Black FAKRA Jack Right Angle Cable Using RG174 Coax PE3W00917](#)



SMA Female to Black FAKRA Jack Right Angle
Cable Using RG174 Coax

RF Cable Assemblies Technical Data Sheet

PE3W00917

How to Order

Part Number Configuration:

PE3W00917

- **xx**

uu

Unit of Measure:
cm = Centimeters
<blank> = Inches
Length
Base Number

Example: PE3W00917-12 = 12 inches long cable
PE3W00917-100cm = 100 cm long cable

SMA Female to Black FAKRA Jack Right Angle Cable Using RG174 Coax from Pasternack Enterprises has same day shipment for domestic and International orders. Our RF, microwave and millimeter wave products maintain a 99.4% availability and are part of the broadest selection in the industry.

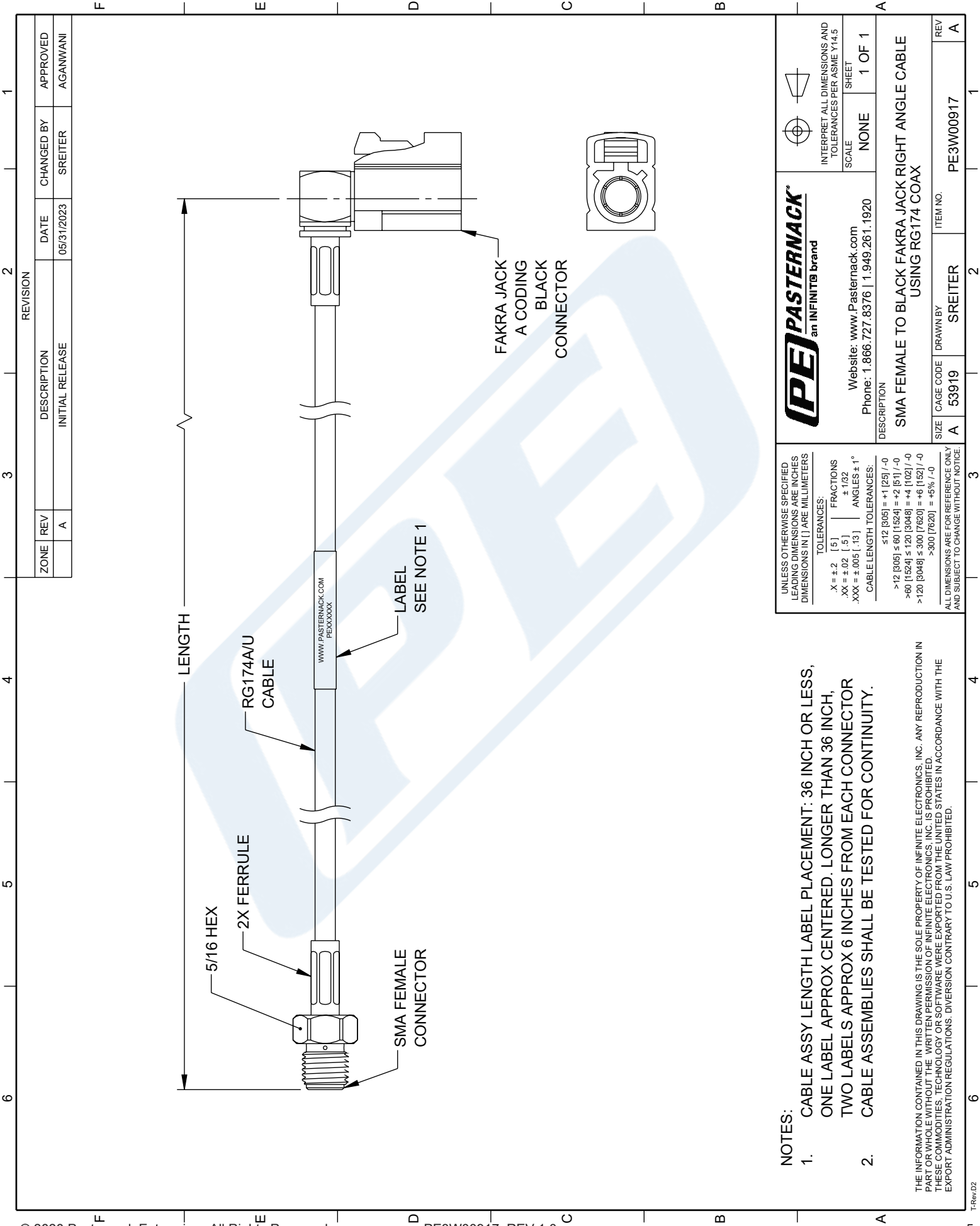
Click the following link (or enter part number in "SEARCH" on website) to obtain additional part information including price, inventory and certifications: [SMA Female to Black FAKRA Jack Right Angle Cable Using RG174 Coax PE3W00917](https://www.pasternack.com/sma-female-to-fakra-jack-cable-using-rg174-pe3w00917-p.aspx)

URL: <https://www.pasternack.com/sma-female-to-fakra-jack-cable-using-rg174-pe3w00917-p.aspx>

The information contained in this document is accurate to the best of our knowledge and representative of the part described herein. It may be necessary to make modifications to the part and/or the documentation of the part, in order to implement improvements. Pasternack reserves the right to make such changes as required. Unless otherwise stated, all specifications are nominal. Pasternack does not make any representation or warranty regarding the suitability of the part described herein for any particular purpose, and Pasternack does not assume any liability arising out of the use of any part or documentation.

PE3W00917 CAD Drawing

SMA Female to Black FAKRA Jack Right Angle Cable Using RG174 Coax



NOTES:

- 1. CABLE ASSY LENGTH LABEL PLACEMENT: 36 INCH OR LESS, ONE LABEL APPROX CENTERED. LONGER THAN 36 INCH, TWO LABELS APPROX 6 INCHES FROM EACH CONNECTOR
- 2. CABLE ASSEMBLIES SHALL BE TESTED FOR CONTINUITY.

THE INFORMATION CONTAINED IN THIS DRAWING IS THE SOLE PROPERTY OF INFINITE ELECTRONICS, INC. ANY REPRODUCTION IN PART OR WHOLE WITHOUT THE WRITTEN PERMISSION OF INFINITE ELECTRONICS, INC. IS PROHIBITED. THESE COMMODITIES, TECHNOLOGY OR SOFTWARE WERE EXPORTED FROM THE UNITED STATES IN ACCORDANCE WITH THE EXPORT ADMINISTRATION REGULATIONS. DIVERSION CONTRARY TO U.S. LAW PROHIBITED.

PASTERNAK
an INFINITE brand

Website: www.Pasternack.com
Phone: 1.866.727.8376 | 1.949.261.1920

INTERPRET ALL DIMENSIONS AND TOLERANCES PER ASME Y14.5

SCALE: NONE

SHEET: 1 OF 1

DESCRIPTION
SMA FEMALE TO BLACK FAKRA JACK RIGHT ANGLE CABLE USING RG174 COAX

SIZE	CAGE CODE	DRAWN BY	ITEM NO.
A	53919	SREITER	PE3W00917

REV A

UNLESS OTHERWISE SPECIFIED
LEADING DIMENSIONS ARE INCHES
DIMENSIONS IN [] ARE MILLIMETERS

TOLERANCES:
X = ±.2 [5] FRACTIONS
.XX = ±.02 [.5] ±.1/32
.XXX = ±.005 [.13] ANGLES ± 1°

CABLE LENGTH TOLERANCES:
≤12 [305] = +1 [25] / -0
>12 [305] ≤ 60 [1524] = +2 [51] / -0
>60 [1524] ≤ 120 [3048] = +4 [102] / -0
>120 [3048] ≤ 300 [7620] = +6 [152] / -0
>300 [7620] = +5% / -0

ALL DIMENSIONS ARE FOR REFERENCE ONLY
AND SUBJECT TO CHANGE WITHOUT NOTICE.