

SMA Female Bulkhead to MMCX Plug Cable Using RG188-DS Coax

PE3W01224

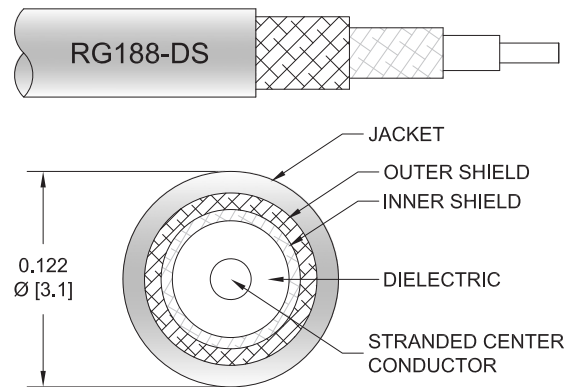


Configuration

- Connector 1: SMA Female Bulkhead
- Connector 2: MMCX Plug
- Cable Type: RG188-DS
- Coax Flex Type: Flexible

Features

- Max Frequency 6 GHz
- Double Shielded
- PTFE Jacket



Applications

- General Purpose
- Laboratory Use

Description

Pasternack's PE3W01224 SMA female bulkhead to MMCX plug cable using RG188-DS coax is part of our full line of RF components available for same-day shipping. Pasternack's flexible RF cable assemblies are ideal for applications where tight bends and flexure are required. This Pasternack SMA to MMCX cable assembly has a female to plug gender configuration with 50 ohm flexible RG188-DS coax. The PE3W01224 SMA female to MMCX plug cable assembly operates to 6 GHz. Our RF cable assembly with SMA bulkhead interface allows designers to create external connections on their product enclosures, and can be used in a variety of other rack mount and panel mount applications. The double shielding of this Pasternack cable assembly provides excellent shielding effectiveness.

Custom versions of most RF cable assemblies can be built and shipped same day. Custom cable assembly lengths can be obtained by specifying the desired length on the web site at time of order or by contacting a sales representative. Other available RF cable assembly value added services include connector orientation or clocking, heat shrink booting and custom labeling. RF testing can also be performed to document the electrical performance of your cable assembly.

Electrical Specifications

Description	Minimum	Typical	Maximum	Units
Frequency Range	DC		6	GHz
VSWR			1.4:1	
Capacitance		32 [104.99]		pF/ft [pF/m]

Specifications by Frequency

SMA Female Bulkhead to MMCX Plug Cable Using RG188-DS Coax



PE3W01224

Part Number	Length	Description	F1	F2	F3	F4	F5	Units	Weight (lbs)
		Frequency	250	500	1000	2500	6000	MHz	
PE3W01224	Custom Lengths Available	Insertion Loss (Typ.)	0.146	0.197	0.3	0.368	0.898	dB/ft	
			0.48	0.65	0.99	1.21	2.95	dB/m	
PE3W01224-12	12 inch	Insertion Loss (Typ.)	0.35	0.4	0.5	0.57	1.1	dB	0.029
PE3W01224-24	24 inch	Insertion Loss (Typ.)	0.5	0.6	0.8	0.94	2	dB	0.044
PE3W01224-36	36 inch	Insertion Loss (Typ.)	0.64	0.8	1.1	1.31	2.9	dB	0.059
PE3W01224-48	48 inch	Insertion Loss (Typ.)	0.79	0.99	1.4	1.68	3.8	dB	0.074
PE3W01224-60	60 inch	Insertion Loss (Typ.)	0.93	1.19	1.7	2.04	4.69	dB	0.089

The insertion loss data for the base model does not include loss due to the connectors. Each length includes insertion loss due to the connectors.

Loss due to Connector 1:	0.1 dB
Loss due to Connector 2:	0.1 dB
Base Weight:	0.029 pounds
Additional Weight per Inch:	0.00125 pounds

Mechanical Specifications

Cable Assembly

Weight	0.029 lbs [13.15 g]
--------	---------------------

Cable

Cable Type	RG188-DS
Impedance	50 Ohms
Inner Conductor Type	Stranded
Inner Conductor Material and Plating	Copper Clad Steel, Silver
Dielectric Type	PTFE
Number of Shields	2
Shield Layer 1	Silver Plated Copper Braid
Shield Layer 2	Silver Plated Copper Braid
Jacket Material	PTFE, White
Jacket Diameter	0.122 in [3.1 mm]

Connectors

Description	Connector 1	Connector 2
Type	SMA Female Bulkhead	MMCX Plug
Impedance	50 Ohms	50 Ohms
Configuration	Straight	Straight
Contact Material and Plating	Beryllium Copper, Gold	Brass, Gold
Contact Plating Specification	QQ-C-530	30μ in. minimum
Dielectric Type	Teflon	Teflon
Body Material and Plating	Brass, Nickel	Brass, Gold
Body Plating Specification	QQ-B-626	3μ in. minimum

SMA Female Bulkhead to MMCX Plug Cable Using RG188-DS Coax



PE3W01224

Environmental Specifications

Operating Range Temperature

-55 to +165 deg C

Compliance Certifications (see [product page](#) for current document)

Plotted and Other Data

Notes:

Typical Performance Data

How to Order

Part Number Configuration:

PE3W01224

- xx

uu

Unit of Measure:

cm = Centimeters

<blank> = Inches

Length

Base Number

Example: PE3W01224-12 = 12 inches long cable
PE3W01224-100cm = 100 cm long cable

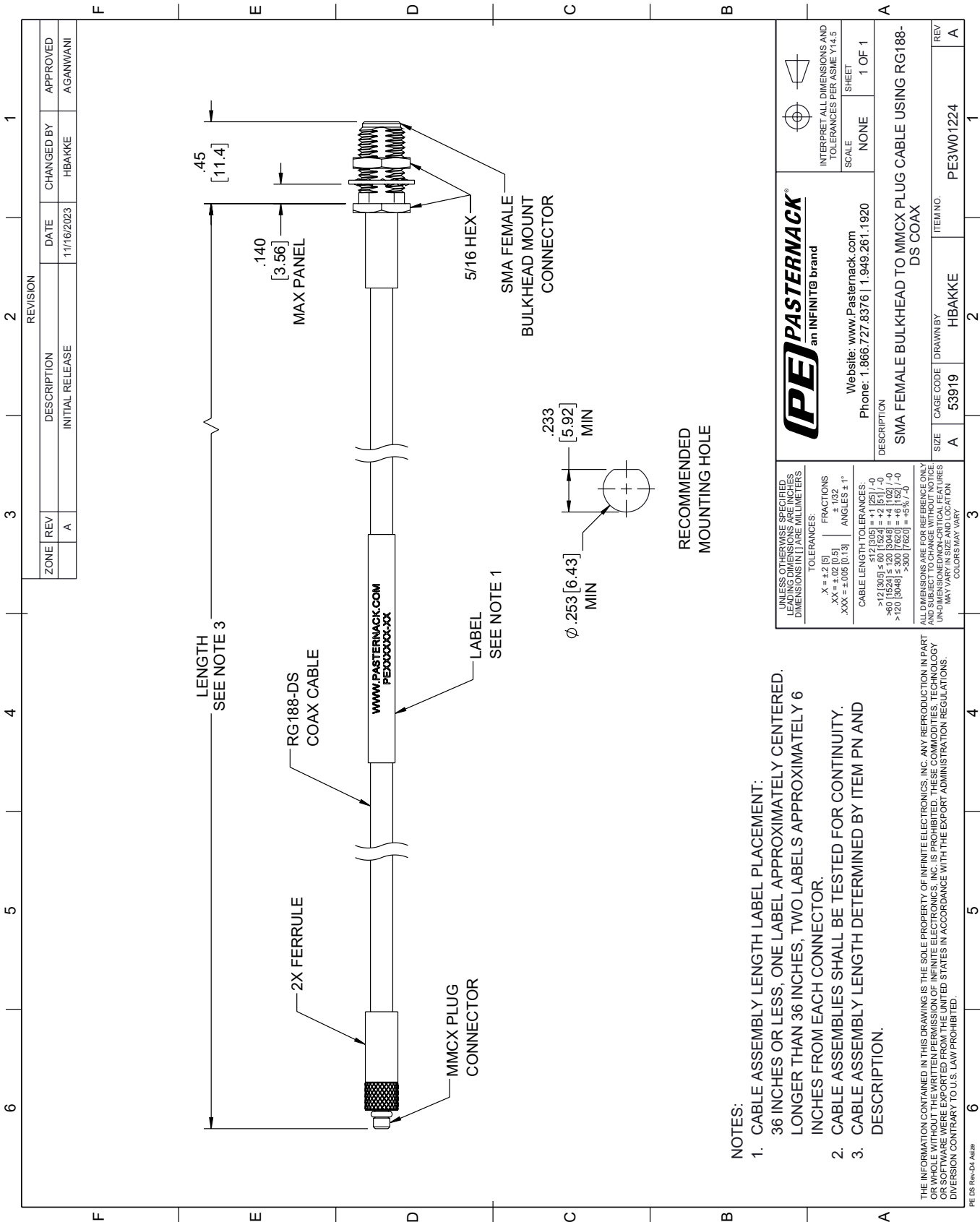
SMA Female Bulkhead to MMCX Plug Cable Using RG188-DS Coax from Pasternack Enterprises has same day shipment for domestic and International orders. Our RF, microwave and millimeter wave products maintain a 99.4% availability and are part of the broadest selection in the industry.

Click the following link (or enter part number in "SEARCH" on website) to obtain additional part information including price, inventory and certifications: [SMA Female Bulkhead to MMCX Plug Cable Using RG188-DS Coax PE3W01224](#)

URL: <https://www.pasternack.com/sma-female-bulkhead-to-mmcx-plug-cable-using-rg188-ds-pe3w01224-p.aspx>

The information contained within this document is accurate to the best of our knowledge and representative of the part described herein. It may be necessary to make modifications to the part and/or the documentation of the part in order to implement improvements. Pasternack Enterprises reserves the right to make such changes as required. Unless otherwise stated, all specifications are nominal. Pasternack Enterprises does not make any representation or warranty regarding the suitability of the part described herein for any particular purpose, and Pasternack Enterprises does not assume liability arising out of the use of any part or document.

PE3W01224 CAD Drawing
SMA Female Bulkhead to MMCX Plug Cable Using RG188-DS Coax



- NOTES:
- 1. CABLE ASSEMBLY LENGTH LABEL PLACEMENT: 36 INCHES OR LESS, ONE LABEL APPROXIMATELY CENTERED. LONGER THAN 36 INCHES, TWO LABELS APPROXIMATELY 6 INCHES FROM EACH CONNECTOR.
 - 2. CABLE ASSEMBLIES SHALL BE TESTED FOR CONTINUITY.
 - 3. CABLE ASSEMBLY LENGTH DETERMINED BY ITEM PN AND DESCRIPTION.

PE PASTERNAK an INFINITI® brand		Website: www.Pasternack.com Phone: 1.866.727.8376 1.949.261.1920		INTERPRET ALL DIMENSIONS AND TOLERANCES PER ASME Y14.5	
UNLESS OTHERWISE SPECIFIED, LEADING DIMENSIONS ARE IN INCHES. DIMENSIONS IN [] ARE MILLIMETERS.		TOLERANCES:		SCALE	
X = ±.2 [5]		FRACTIONS		NONE	
.XX = ±.02 [0.5]		± 1/32		SHEET	
.XXX = ±.005 [0.13]		ANGLES ± 1°		1 OF 1	
CABLE LENGTH TOLERANCES:		DESCRIPTION		SMA FEMALE BULKHEAD TO MMCX PLUG CABLE USING RG188-DS COAX	
>12 [305] ≤ 60 [1524] = ±.1 [25] / -0		SIZE		ITEM NO.	
>60 [1524] ≤ 120 [3048] = ±.1 [25] / -0		CAGE CODE		53919	
>120 [3048] ≤ 300 [7620] = ±.1 [25] / -0		DRAWN BY		HBAKKE	
ALL DIMENSIONS ARE FOR REFERENCE ONLY. UNLESS OTHERWISE SPECIFIED, DIMENSIONS MAY VARY IN SIZE AND LOCATION. COLORS MAY VARY.		REV		A	