



75 Ohm BNC Female Bulkhead to 75 Ohm Push-On MCX Plug  
Right Angle Cable 200 cm Length Using 75 Ohm RG179 Coax

RF Cable Assemblies Technical Data Sheet

PE3W01725-SP1-200CM

### Configuration

- Connector 1: BNC Female Bulkhead
- Connector 2: Push-On MCX Plug Right Angle
- Cable Type: RG179

### Features

- Max Frequency 1 GHz
- 70% Phase Velocity
- FEP Jacket

### Applications

- General Purpose
- Laboratory Use

### Description

Pasternack's PE3W01725-SP1-200CM 75 ohm BNC female bulkhead to 75 ohm MCX plug push-on right angle 200 cm cable using 75 ohm RG179 coax is part of our full line of RF components available for same-day shipping. Pasternack's flexible RF cable assemblies are ideal for applications where tight bends and flexure are required. This Pasternack BNC to MCX cable assembly has a female to plug gender configuration with 75 ohm flexible RG179 coax. The PE3W01725-SP1-200CM BNC female to MCX plug cable assembly operates to 1 GHz. The right angle MCX interface on the RG179 cable allows for easier connections in tight spaces. Our RF cable assembly with BNC bulkhead interface allows designers to create external connections on their product enclosures, and can be used in a variety of other rack mount and panel mount applications.

Custom versions of most RF cable assemblies can be built and shipped same day. Custom cable assembly lengths can be obtained by specifying the desired length on the web site at time of order or by contacting a sales representative. Other available RF cable assembly value added services include connector orientation or clocking, heat shrink booting and custom labeling. RF testing can also be performed to document the electrical performance of your cable assembly.

### Electrical Specifications

Description	Minimum	Typical	Maximum	Units
Frequency Range	DC		1,000	MHz
VSWR			1.5:1	
Velocity of Propagation		70		%
Capacitance		19.4 [63.65]		pF/ft [pF/m]

Click the following link (or enter part number in "SEARCH" on website) to obtain additional part information including price, inventory and certifications: [75 Ohm BNC Female Bulkhead to 75 Ohm Push-On MCX Plug Right Angle Cable 200 cm Length Using 75 Ohm RG179 Coax PE3W01725-SP1-200CM](#)



## 75 Ohm BNC Female Bulkhead to 75 Ohm Push-On MCX Plug Right Angle Cable 200 cm Length Using 75 Ohm RG179 Coax

### RF Cable Assemblies Technical Data Sheet

PE3W01725-SP1-200CM

#### Specifications by Frequency

Description	F1	F2	F3	F4	F5	Units
Frequency	100	250	500	1,000		MHz
Insertion Loss (Max.)	0.89	1.12	1.5	2.27		dB

#### Electrical Specification Notes:

The Insertion Loss data above is based on the performance specifications of the coax use in this assembly. The Insertion Loss includes an estimated insertion loss of 0.3dB of connector Loss

#### Mechanical Specifications

##### Cable Assembly

Length*	78.74 in [200 cm]
Diameter	0.689 in [17.5 mm]

##### Cable

Cable Type	RG179
Impedance	75 Ohms
Inner Conductor Type	Stranded
Inner Conductor Material and Plating	Copper Clad Steel, Silver
Dielectric Type	PTFE
Number of Shields	1
Shield Layer 1	Silver Plated Copper Braid
Jacket Material	FEP, Tan
Jacket Diameter	0.1 in [2.54 mm]
Repeated Minimum Bend Radius	0.4 in [10.16 mm]

Click the following link (or enter part number in "SEARCH" on website) to obtain additional part information including price, inventory and certifications: [75 Ohm BNC Female Bulkhead to 75 Ohm Push-On MCX Plug Right Angle Cable 200 cm Length Using 75 Ohm RG179 Coax PE3W01725-SP1-200CM](#)



75 Ohm BNC Female Bulkhead to 75 Ohm Push-On MCX Plug  
Right Angle Cable 200 cm Length Using 75 Ohm RG179 Coax

## RF Cable Assemblies Technical Data Sheet

PE3W01725-SP1-200CM

### Connectors

Description	Connector 1	Connector 2
Type	BNC Female Bulkhead	MCX Plug Right Angle
Specification		MIL-C-39012
Impedance	75 Ohms	75 Ohms
Connection Method		Push-On
Contact Material and Plating	Brass, Gold	Brass, Gold
Contact Plating Specification	30 $\mu$ in minimum	
Dielectric Type	PTFE	PTFE
Outer Conductor Material and Plating		Beryllium Copper, Gold
Body Material and Plating	Brass, Nickel	Brass, Gold
Body Plating Specification	100 $\mu$ in minimum	

Mechanical Specification Notes:

\*All cable assemblies have a length tolerance of 1.5% or  $\pm 3/8"$ , whichever is greater.

**Compliance Certifications** (see [product page](#) for current document)

### Plotted and Other Data

Notes:

Click the following link (or enter part number in "SEARCH" on website) to obtain additional part information including price, inventory and certifications: [75 Ohm BNC Female Bulkhead to 75 Ohm Push-On MCX Plug Right Angle Cable 200 cm Length Using 75 Ohm RG179 Coax PE3W01725-SP1-200CM](#)



75 Ohm BNC Female Bulkhead to 75 Ohm Push-On MCX Plug  
Right Angle Cable 200 cm Length Using 75 Ohm RG179 Coax

RF Cable Assemblies Technical Data Sheet

PE3W01725-SP1-200CM

**How to Order**

Part Number Configuration:

**PE3W01725**

- **xx**

**uu**

Unit of Measure:  
cm = Centimeters  
<blank> = Inches  
Length  
Base Number

Example: PE3W01725-12 = 12 inches long cable  
PE3W01725-100cm = 100 cm long cable

75 Ohm BNC Female Bulkhead to 75 Ohm Push-On MCX Plug Right Angle Cable 200 cm Length Using 75 Ohm RG179 Coax from Pasternack Enterprises has same day shipment for domestic and International orders. Our RF, microwave and millimeter wave products maintain a 99.4% availability and are part of the broadest selection in the industry.

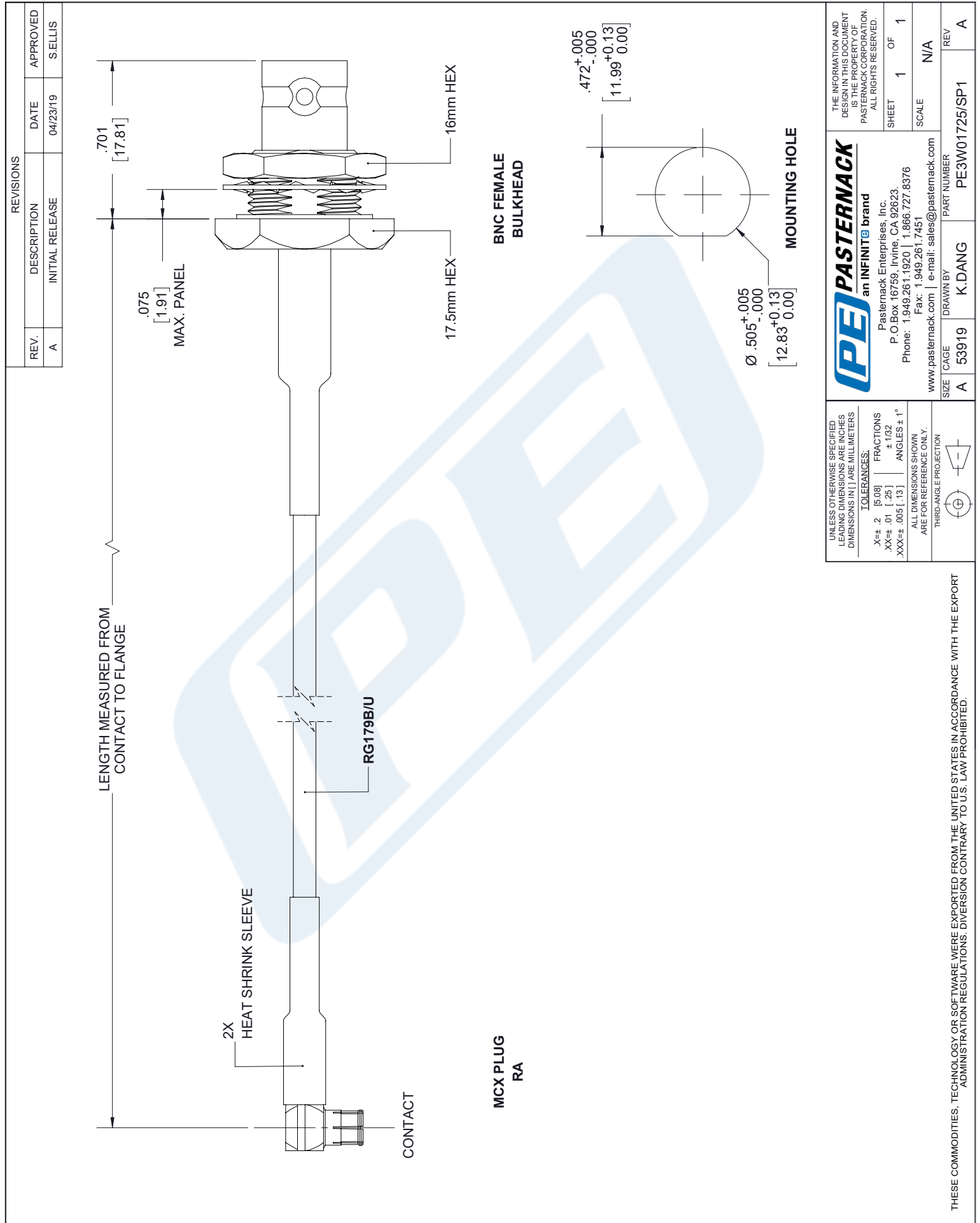
Click the following link (or enter part number in "SEARCH" on website) to obtain additional part information including price, inventory and certifications: [75 Ohm BNC Female Bulkhead to 75 Ohm Push-On MCX Plug Right Angle Cable 200 cm Length Using 75 Ohm RG179 Coax PE3W01725-SP1-200CM](https://www.pasternack.com/bnc-female-mcx-plug-rg179bu-cable-assembly-pe3w01725-sp1-200cm-p.aspx)

URL: <https://www.pasternack.com/bnc-female-mcx-plug-rg179bu-cable-assembly-pe3w01725-sp1-200cm-p.aspx>

The information contained in this document is accurate to the best of our knowledge and representative of the part described herein. It may be necessary to make modifications to the part and/or the documentation of the part, in order to implement improvements. Pasternack reserves the right to make such changes as required. Unless otherwise stated, all specifications are nominal. Pasternack does not make any representation or warranty regarding the suitability of the part described herein for any particular purpose, and Pasternack does not assume any liability arising out of the use of any part or documentation.

# PE3W01725-SP1-200CM CAD Drawing

75 Ohm BNC Female Bulkhead to 75 Ohm Push-On MCX Plug  
Right Angle Cable 200 cm Length Using 75 Ohm RG179 Coax



UNLESS OTHERWISE SPECIFIED LEADING DIMENSIONS ARE IN INCHES DIMENSIONS IN [ ] ARE MILLIMETERS	
TOLERANCES:	FRACTIONS
X±.2 [5.08]	±.132
XX±.01 [.25]	±.005
XXX±.005 [.13]	±.001
ALL DIMENSIONS SHOWN ARE FOR REFERENCE ONLY.	
THIRD-ANGLE PROJECTION	

<b>PE PASTERNAK</b> an INFINITI brand	
Pasternack Enterprises, Inc. P.O. Box 16759, Irvine, CA 92623. Phone: 1.949.261.1920   1.866.727.8376 Fax: 1.949.261.7451 www.pasternack.com   e-mail: sales@pasternack.com	
SIZE	CAGE
A	53919
DRAWN BY	K.DANG
PART NUMBER	PE3W01725/SP1
REV	A

THE INFORMATION AND DESIGN IN THIS DOCUMENT IS THE PROPERTY OF PASTERNAK CORPORATION. ALL RIGHTS RESERVED.	
SHEET	1 OF 1
SCALE	N/A