



SMA Male to BNC Female Bulkhead Cable 60 Inch Length Using RG188 Coax with HeatShrink

RF Cable Assemblies Technical Data Sheet

PE3W02140/HS-60

Configuration

- Connector 1: SMA Male
- Connector 2: BNC Female Bulkhead
- Cable Type: RG188

Features

- Max Frequency 1 GHz
- PTFE Jacket

Applications

- General Purpose
- Laboratory Use

Description

Pasternack's PE3W02140/HS-60 SMA male to BNC female bulkhead 60 inch cable using RG188 coax is part of our full line of RF components available for same-day shipping. Pasternack's flexible RF cable assemblies are ideal for applications where tight bends and flexure are required. This Pasternack SMA to BNC cable assembly has a male to female gender configuration with 50 ohm flexible RG188 coax. The PE3W02140/HS-60 SMA male to BNC female cable assembly operates to 1 GHz. Our RF cable assembly with BNC bulkhead interface allows designers to create external connections on their product enclosures, and can be used in a variety of other rack mount and panel mount applications.

Custom versions of most RF cable assemblies can be built and shipped same day. Custom cable assembly lengths can be obtained by specifying the desired length on the web site at time of order or by contacting a sales representative. Other available RF cable assembly value added services include connector orientation or clocking, heat shrink booting and custom labeling. RF testing can also be performed to document the electrical performance of your cable assembly.

Electrical Specifications

Description	Minimum	Typical	Maximum	Units
Frequency Range	DC		1,000	MHz
VSWR			1.45:1	

Specifications by Frequency

Description	F1	F2	F3	F4	F5	Units
Frequency	100	250	500	1,000		MHz
Insertion Loss (Typ.)	1.51	2.18	3.13	4.48		dB

Electrical Specification Notes:

The Insertion Loss data above is based on the performance specifications of the coax cable and connectors used in this assembly. The Insertion Loss includes an estimated insertion loss of 0.1 dB per connector.

Click the following link (or enter part number in "SEARCH" on website) to obtain additional part information including price, inventory and certifications: [SMA Male to BNC Female Bulkhead Cable 60 Inch Length Using RG188 Coax with Heat-Shrink PE3W02140/HS-60](#)



SMA Male to BNC Female Bulkhead Cable 60 Inch
Length Using RG188 Coax with HeatShrink

RF Cable Assemblies Technical Data Sheet

PE3W02140/HS-60

Mechanical Specifications

Cable Assembly

Length* 60 in [152.4 cm]

Cable

Cable Type RG188
Impedance 50 Ohms
Inner Conductor Type Stranded
Inner Conductor Material and Plating Copper Clad Steel, Silver
Dielectric Type PTFE
Number of Shields 1
Shield Layer 1 Silver Plated Copper Braid
Jacket Material PTFE, White
Jacket Diameter 0.11 in [2.79 mm]

Connectors

Description	Connector 1	Connector 2
Type	SMA Male	BNC Female Bulkhead
Impedance	50 Ohms	50 Ohms
Contact Material and Plating	Brass, Gold	Brass, Gold
Contact Plating Specification		30 µin minimum
Dielectric Type	PTFE	PTFE
Body Material and Plating	Brass, Gold	Brass, Nickel
Body Plating Specification		100 µin minimum
Coupling Nut Material and Plating	Brass, Gold	
Hex Size	5/16 in	
Torque	5 in-lbs [0.57 Nm]	

Compliance Certifications (see [product page](#) for current document)

Plotted and Other Data

Notes:

Click the following link (or enter part number in "SEARCH" on website) to obtain additional part information including price, inventory and certifications: [SMA Male to BNC Female Bulkhead Cable 60 Inch Length Using RG188 Coax with Heat-Shrink PE3W02140/HS-60](#)



SMA Male to BNC Female Bulkhead Cable 60 Inch Length Using RG188 Coax with HeatShrink

RF Cable Assemblies Technical Data Sheet

PE3W02140/HS-60

How to Order

Part Number Configuration:

PE3W02140/HS - xx

uu

Unit of Measure:
cm = Centimeters
<blank> = Inches
Length
Base Number

Example: PE3W02140/HS-12 = 12 inches long cable
PE3W02140/HS-100cm = 100 cm long cable

SMA Male to BNC Female Bulkhead Cable 60 Inch Length Using RG188 Coax with HeatShrink from Pasternack Enterprises has same day shipment for domestic and International orders. Our RF, microwave and millimeter wave products maintain a 99.4% availability and are part of the broadest selection in the industry.

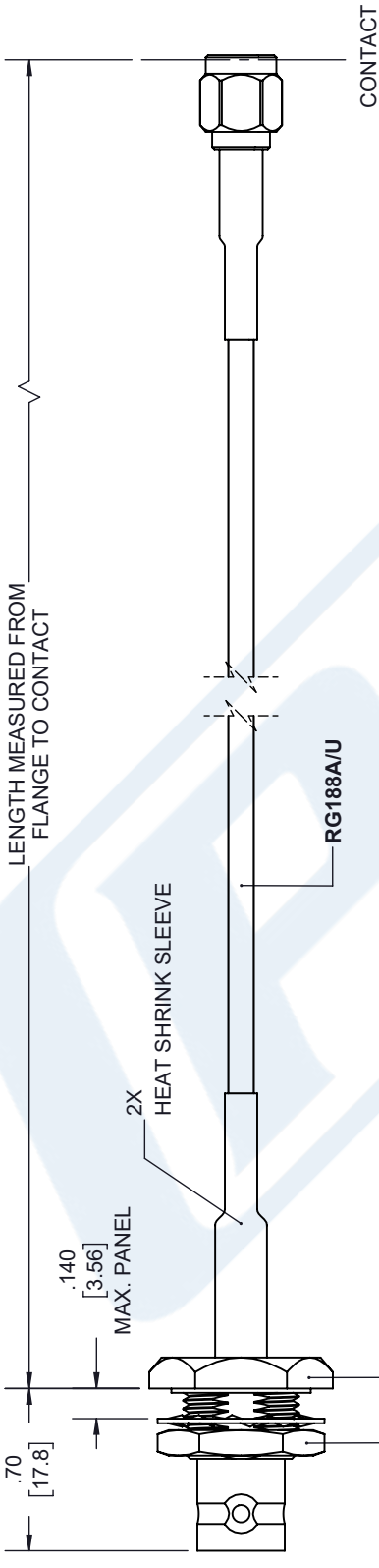
Click the following link (or enter part number in "SEARCH" on website) to obtain additional part information including price, inventory and certifications: [SMA Male to BNC Female Bulkhead Cable 60 Inch Length Using RG188 Coax with HeatShrink PE3W02140/HS-60](https://www.pasternack.com/sma-male-bnc-female-rg188au-cable-assembly-pe3w02140-hs-60-p.aspx)

URL: <https://www.pasternack.com/sma-male-bnc-female-rg188au-cable-assembly-pe3w02140-hs-60-p.aspx>

The information contained in this document is accurate to the best of our knowledge and representative of the part described herein. It may be necessary to make modifications to the part and/or the documentation of the part, in order to implement improvements. Pasternack reserves the right to make such changes as required. Unless otherwise stated, all specifications are nominal. Pasternack does not make any representation or warranty regarding the suitability of the part described herein for any particular purpose, and Pasternack does not assume any liability arising out of the use of any part or documentation.

PE3W02140/HS-60 CAD Drawing
SMA Male to BNC Female Bulkhead Cable 60 Inch
Length Using RG188 Coax with HeatShrink

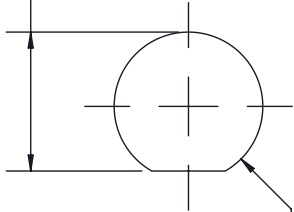
REVISIONS			
REV.	DESCRIPTION	DATE	APPROVED
A	INITIAL RELEASE	10/19/2020	S. ELLIS



**BNC FEMALE
BULKHEAD**

SMA MALE

$.472^{+.005}_{-.000}$
 $[11.99^{+0.13}_{0.00}]$



MOUNTING HOLE

$\varnothing .505^{+.005}_{-.000}$
 $[12.83^{+0.13}_{0.00}]$

UNLESS OTHERWISE SPECIFIED LEADING DIMENSIONS ARE INCHES DIMENSIONS IN [] ARE MILLIMETERS	
TOLERANCES:	FRACTIONS
X = ± .2	[.008]
.XX = ± .02	[.51]
.XXX = ± .005	[.13]
ANGLES ± 1°	
CABLE LENGTH (L) TOLERANCES:	
L ≤ 12 [305] = +1 [25] / -0	
12 [305] < L ≤ 60 [1524] = +2 [51] / -0	
60 [1524] < L ≤ 120 [3048] = +4 [102] / -0	
120 [3048] < L ≤ 300 [7620] = +6 [152] / -0	
300 [7620] < L = +5% / -0	
ALL DIMENSIONS SHOWN ARE FOR REFERENCE ONLY.	

**PASTERNAK**
an INFINITE brand

Pasternack Enterprises, Inc.
P.O. Box 16759, Irvine, CA 92623.
Phone: 1.949.261.1920 | 1.866.727.8376
Fax: 1.949.261.7451
Website: www.pasternack.com
E-mail: sales@pasternack.com

THIRD-ANGLE PROJECTION	THE INFORMATION AND DESIGN IN THIS DOCUMENT IS THE PROPERTY OF PASTERNAK CORPORATION. ALL RIGHTS RESERVED.
SHEET 1	OF 1
SCALE	N/A
SIZE	A
CAGE CODE	53919
DRAWN BY	K.DANG
ITEM NO.	PE3W02140/HS
REV	A