

## SMA Female Bulkhead to SMP Female Right Angle Cable Using PE-SR405FLJ Coax with HeatShrink



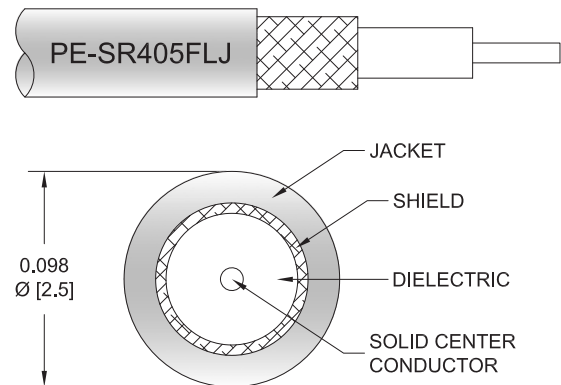
### PE3W02640/HS

#### Configuration

- Connector 1: SMA Female Bulkhead
- Connector 2: SMP Female Right Angle
- Cable Type: PE-SR405FLJ
- Coax Flex Type: Formable

#### Features

- Max Frequency 18 GHz
- Shielding Effectivity > 100 dB
- 69.5% Phase Velocity
- FEP Jacket



#### Applications

- General Purpose
- Laboratory Use

#### Description

Pasternack's PE3W02640/HS SMA female bulkhead to SMP female right angle cable using PE-SR405FLJ coax is part of our full line of RF components available for same-day shipping. Pasternack's formable RF cable assemblies provide an alternative to costly pre-formed semi-rigid assemblies since they are hand formable. This Pasternack SMA to SMP cable assembly has a female to female gender configuration with 50 ohm formable PE-SR405FLJ coax. The PE3W02640/HS SMA female to SMP female cable assembly operates to 18 GHz. The right angle SMP interface on the PE-SR405FLJ cable allows for easier connections in tight spaces. Our RF cable assembly with SMA bulkhead interface allows designers to create external connections on their product enclosures, and can be used in a variety of other rack mount and panel mount applications.

Custom versions of most RF cable assemblies can be built and shipped same day. Custom cable assembly lengths can be obtained by specifying the desired length on the web site at time of order or by contacting a sales representative. Other available RF cable assembly value added services include connector orientation or clocking, heat shrink booting and custom labeling. RF testing can also be performed to document the electrical performance of your cable assembly.

#### Electrical Specifications

Description	Minimum	Typical	Maximum	Units
Frequency Range	DC		18	GHz
VSWR			1.4:1	
Velocity of Propagation		69.5		%
RF Shielding	100			dB
Group Delay		1.43 [4.69]		ns/ft [ns/m]
Capacitance		29 [95.14]		pF/ft [pF/m]
DC Resistance Inner Conductor		65.7 [215.55]		Ohms/1000ft [Ohms/Km]
DC Resistance Outer Conductor		10.2 [33.46]		Ohms/1000ft [Ohms/Km]

#### Specifications by Frequency

SMA Female Bulkhead to SMP Female Right Angle Cable Using PE-SR405FLJ Coax with HeatShrink



**PE3W02640/HS**

Part Number	Length	Description	F1	F2	F3	F4	F5	Units	Weight (lbs)
			Frequency		1000	2000	4500	9000	
PE3W02640/HS	Custom Lengths Available	Insertion Loss (Typ.)	0.225	0.306	0.509	0.759	1.122	dB/ft	
			0.74	1.01	1.67	2.5	3.69	dB/m	
PE3W02640/HS-6	6 In	Insertion Loss (Typ.)	0.92	0.96	1.06	1.18	1.37	dB	0.045
PE3W02640/HS-9	9 In	Insertion Loss (Typ.)	0.97	1.03	1.19	1.37	1.65	dB	0.049
PE3W02640/HS-12	12 In	Insertion Loss (Typ.)	1.03	1.11	1.31	1.56	1.93	dB	0.052
PE3W02640/HS-18	18 In	Insertion Loss (Typ.)	1.14	1.26	1.57	1.94	2.49	dB	0.06
PE3W02640/HS-24	24 In	Insertion Loss (Typ.)	1.25	1.42	1.82	2.32	3.05	dB	0.067

The insertion loss data for the base model does not include loss due to the connectors. Each length includes insertion loss due to the connectors.

Loss due to Connector 1:	0.6 dB
Loss due to Connector 2:	0.2 dB
Base Weight:	0.052 pounds
Additional Weight per Inch:	0.00117 pounds

**Mechanical Specifications**

**Cable Assembly**

Width/Diameter	0.5 in [12.7 mm]
Weight	0.038 lbs [17.24 g]

**Cable**

Cable Type	PE-SR405FLJ
Impedance	50 Ohms
Inner Conductor Type	Solid
Inner Conductor Material and Plating	Copper Clad Steel, Silver
Dielectric Type	PTFE
Number of Shields	1
Outer Conductor 1 Material and Plating	Tinned Copper Composite Braid
Jacket Material	FEP, Black
Jacket Diameter	0.105 in [2.67 mm]
One Time Minimum Bend Radius	0.5 in [12.7 mm]
Repeated Minimum Bend Radius	0.787 in [19.99 mm]

SMA Female Bulkhead to SMP Female Right Angle Cable Using PE-SR405FLJ Coax with HeatShrink



**PE3W02640/HS**

**Connectors**

Description	Connector 1	Connector 2
Type	SMA Female Bulkhead	SMP Female Right Angle
Specification		MIL-STD-348
Impedance	50 Ohms	50 Ohms
Configuration	Straight	Right Angle
Contact Material and Plating	Beryllium Copper, Gold over Nickel	Beryllium Copper, Gold
Contact Plating Specification		MIL-G-45204
Dielectric Type	PTFE	PTFE
Body Material and Plating	Brass, Gold over Nickel	Beryllium Copper, Gold
Body Plating Specification		MIL-G-45204

**Environmental Specifications**

**Compliance Certifications** (see [product page](#) for current document)

**Plotted and Other Data**

Notes:

## SMA Female Bulkhead to SMP Female Right Angle Cable Using PE-SR405FLJ Coax with HeatShrink



### PE3W02640/HS

#### Typical Performance Data

#### How to Order

Part Number Configuration:

**PE3W02640/HS - xx uu**



Example: PE3W02640/HS-12 = 12 inches long cable  
PE3W02640/HS-100cm = 100 cm long cable

SMA Female Bulkhead to SMP Female Right Angle Cable Using PE-SR405FLJ Coax with HeatShrink from Pasternack Enterprises has same day shipment for domestic and International orders. Our RF, microwave and millimeter wave products maintain a 99.4% availability and are part of the broadest selection in the industry.

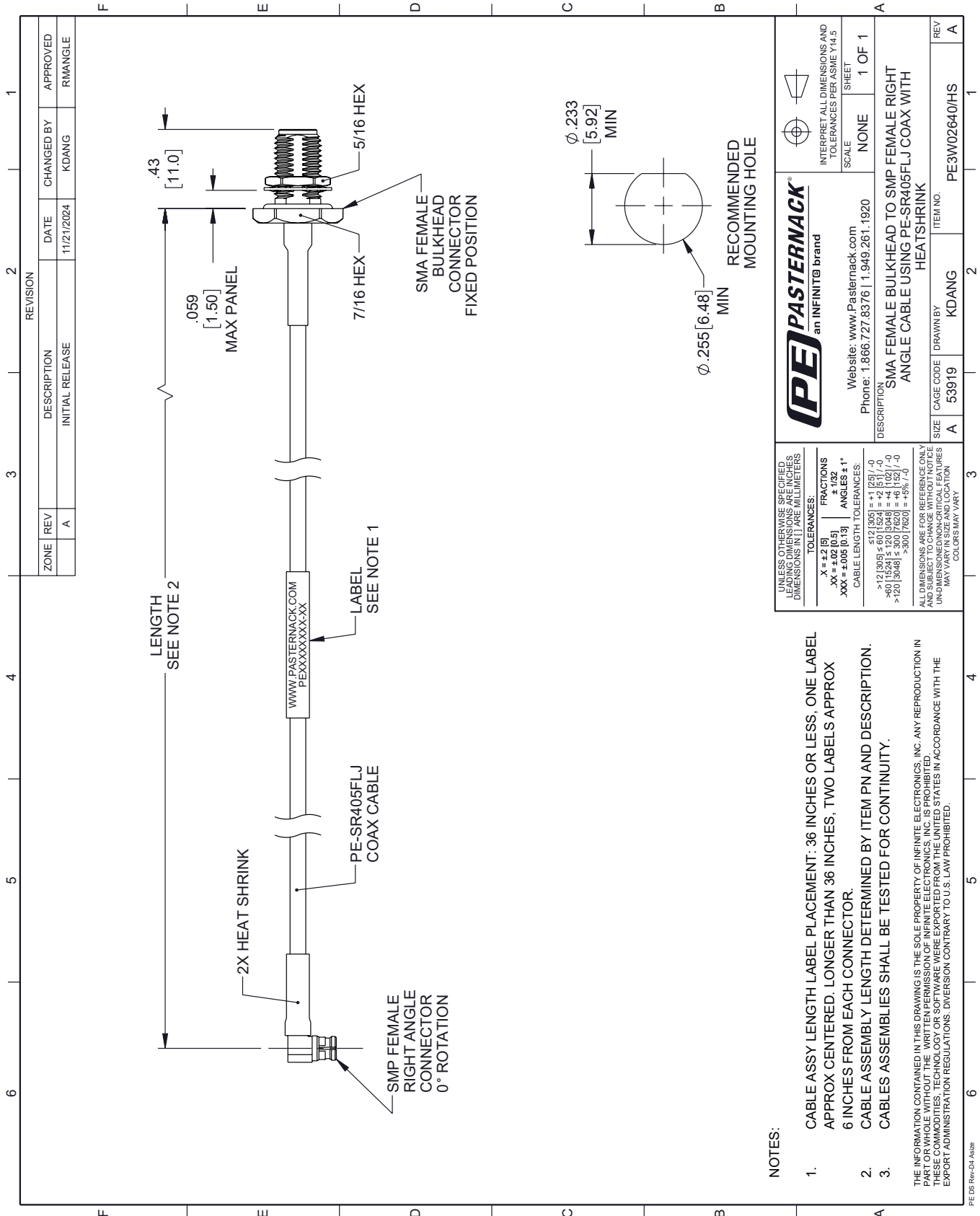
Click the following link (or enter part number in "SEARCH" on website) to obtain additional part information including price, inventory and certifications: [SMA Female Bulkhead to SMP Female Right Angle Cable Using PE-SR405FLJ Coax with HeatShrink PE3W02640/HS](#)

URL: <https://www.pasternack.com/sma-female-bulkhead-to-smp-female-cable-using-pe-sr405flj-with-heatshrink-pe3w02640-hs-p.aspx>

The information contained within this document is accurate to the best of our knowledge and representative of the part described herein. It may be necessary to make modifications to the part and/or the documentation of the part in order to implement improvements. Pasternack Enterprises reserves the right to make such changes as required. Unless otherwise stated, all specifications are nominal. Pasternack Enterprises does not make any representation or warranty regarding the suitability of the part described herein for any particular purpose, and Pasternack Enterprises does not assume liability arising out of the use of any part or document.

# PE3W02640/HS CAD Drawing

SMA Female Bulkhead to SMP Female Right Angle Cable Using PE-SR405FLJ Coax with HeatShrink



ZONE	REV	DESCRIPTION	DATE	CHANGED BY	APPROVED
	A	INITIAL RELEASE	11/21/2024	KDANG	RMANGLE

**PE PASTERNAK**  
an INFINITB brand

Website: [www.Pasternack.com](http://www.Pasternack.com)  
Phone: 1.866.727.8376 | 1.949.261.1920

INTERPRET ALL DIMENSIONS AND TOLERANCES PER ASME Y14.5

SCALE: NONE  
SHEET: 1 OF 1

DESCRIPTION: SMA FEMALE BULKHEAD TO SMP FEMALE RIGHT ANGLE CABLE USING PE-SR405FLJ COAX WITH HEATSHRINK

REV	ITEM NO.
A	PE3W02640/HS

SIZE	CAGE CODE	DRAWN BY
A	53919	KDANG

**NOTES:**

- CABLE ASSY LENGTH LABEL PLACEMENT: .36 INCHES OR LESS, ONE LABEL APPROX CENTERED, LONGER THAN .36 INCHES, TWO LABELS APPROX 6 INCHES FROM EACH CONNECTOR.
- CABLE ASSEMBLY LENGTH DETERMINED BY ITEM PN AND DESCRIPTION.
- CABLE ASSEMBLIES SHALL BE TESTED FOR CONTINUITY.

ALL DIMENSIONS ARE FOR REFERENCE ONLY  
UNLESS OTHERWISE SPECIFIED  
LEADING DIMENSIONS ARE IN INCHES  
DIMENSIONS IN [ ] ARE MILLIMETERS

TOLERANCES:  
 .X = ±.2 [5] ±.132  
 .XX = ±.02 [0.5]  
 .XXX = ±.005 [0.13]

ANGLES ±1°  
 CABLE LENGTH TOLERANCES:  
 <12 [305] ±.60 [1524] = ±.2 [51] / -0  
 >12 [305] ±.60 [1524] = ±.4 [1027] / -0  
 >20 [508] ±.30 [762] = ±.5% L / -0  
 >300 [7620] = ±5% L / -0

ALL DIMENSIONS ARE FOR REFERENCE ONLY  
UNLESS OTHERWISE SPECIFIED  
UNLESS OTHERWISE SPECIFIED  
MAY VARY IN SIZE AND LOCATION  
COLORS MAY VARY

THE INFORMATION CONTAINED IN THIS DRAWING IS THE SOLE PROPERTY OF INFINITE ELECTRONICS, INC. ANY REPRODUCTION IN PART OR WHOLE WITHOUT THE WRITTEN PERMISSION OF INFINITE ELECTRONICS, INC. IS PROHIBITED.  
THESE COMMODITIES, TECHNOLOGY OR SOFTWARE WERE EXPORTED FROM THE UNITED STATES IN ACCORDANCE WITH THE EXPORT ADMINISTRATION REGULATIONS. DIVERSION CONTRARY TO U.S. LAW PROHIBITED.

PE DS Rev-D4-A4326