

## SMA Male to N Male Cable Using RG316 Coax

### PE3W02656

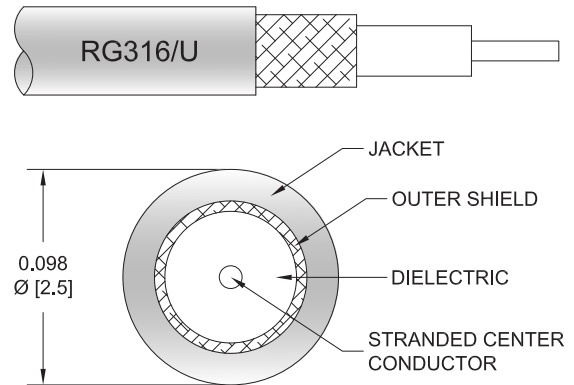


#### Configuration

- Connector 1: SMA Male
- Connector 2: N Male
- Cable Type: RG316
- Coax Flex Type: Flexible

#### Features

- Max Frequency 1 GHz
- 69% Phase Velocity
- FEP Jacket



#### Applications

- General Purpose
- Laboratory Use

#### Description

Pasternack's PE3W02656 SMA male to type N male cable using RG316 coax is part of our full line of RF components available for same-day shipping. Pasternack's flexible RF cable assemblies are ideal for applications where tight bends and flexure are required. This Pasternack SMA to type N cable assembly has a male to male gender configuration with 50 ohm flexible RG316 coax. The PE3W02656 SMA male to type N male cable assembly operates to 1 GHz.

Custom versions of most RF cable assemblies can be built and shipped same day. Custom cable assembly lengths can be obtained by specifying the desired length on the web site at time of order or by contacting a sales representative. Other available RF cable assembly value added services include connector orientation or clocking, heat shrink booting and custom labeling. RF testing can also be performed to document the electrical performance of your cable assembly.

#### Electrical Specifications

Description	Minimum	Typical	Maximum	Units
Frequency Range	DC		1,000	MHz
Velocity of Propagation		69		%
Capacitance		29.4 [96.46]		pF/ft [pF/m]
DC Resistance Inner Conductor		8.41 [27.59]		Ohms/1000ft [Ohms/Km]
Jacket Spark			2,000	Vrms

#### Specifications by Frequency

## SMA Male to N Male Cable Using RG316 Coax



### PE3W02656

Part Number	Length	Description	F1	F2	F3	F4	F5	Units	Weight (lbs)
		Frequency	100	250	500	1000	3000	MHz	
PE3W02656	Custom Lengths Available	Insertion Loss (Typ.)	0.11	0.16	0.24	0.38	0.58	dB/ft	
			0.37	0.53	0.79	1.25	1.91	dB/m	
PE3W02656-12	12 inch	Insertion Loss (Typ.)	0.31	0.36	0.44	0.58	0.78	dB	0.036
PE3W02656-24	24 inch	Insertion Loss (Typ.)	0.42	0.52	0.68	0.96	1.36	dB	0.047
PE3W02656-36	36 inch	Insertion Loss (Typ.)	0.53	0.68	0.92	1.34	1.94	dB	0.057
PE3W02656-48	48 inch	Insertion Loss (Typ.)	0.64	0.84	1.16	1.72	2.52	dB	0.067
PE3W02656-72	72 inch	Insertion Loss (Typ.)	0.86	1.16	1.63	2.48	3.68	dB	0.087

The insertion loss data for the base model does not include loss due to the connectors. Each length includes insertion loss due to the connectors.

Loss due to Connector 1:	0.1 dB
Loss due to Connector 2:	0.1 dB
Base Weight:	0.036 pounds
Additional Weight per Inch:	0.00084 pounds

## Mechanical Specifications

### Cable Assembly

Weight	0.083 lbs [37.65 g]
--------	---------------------

### Cable

Cable Type	RG316
Impedance	50 Ohms
Inner Conductor Type	Stranded
Inner Conductor Material and Plating	Copper Clad Steel, Silver
Dielectric Type	PTFE
Number of Shields	1
Shield Layer 1	Silver Plated Copper Braid
Jacket Material	FEP, Tan
Jacket Diameter	0.102 in [2.59 mm]

## SMA Male to N Male Cable Using RG316 Coax

**PE3W02656**



### Connectors

Description	Connector 1	Connector 2
Type	SMA Male	N Male
Specification		MIL-STD-348A
Impedance	50 Ohms	50 Ohms
Configuration	Straight	Straight
Contact Material and Plating	Brass, Gold	Brass, Gold
Contact Plating Specification		30 µin minimum
Dielectric Type	PTFE	PTFE
Body Material and Plating	Brass, Gold	Brass, Nickel
Body Plating Specification		100 µin minimum
Coupling Nut Material and Plating	Brass, Gold	Brass, Nickel
Coupling Nut Plating Specification		100 µin minimum
Hex Size	5/16 in	
Torque	5 in-lbs 0.57 Nm	

### Environmental Specifications

**Compliance Certifications** (see [product page](#) for current document)

### Plotted and Other Data

Notes:

## SMA Male to N Male Cable Using RG316 Coax



### PE3W02656

#### Typical Performance Data

#### How to Order

Part Number Configuration: **PE3W02656**    **- xx**    **uu**

Unit of Measure:  
cm = Centimeters  
<blank> = Inches

Length

Base Number

Example: PE3W02656-12 = 12 inches long cable  
PE3W02656-100cm = 100 cm long cable

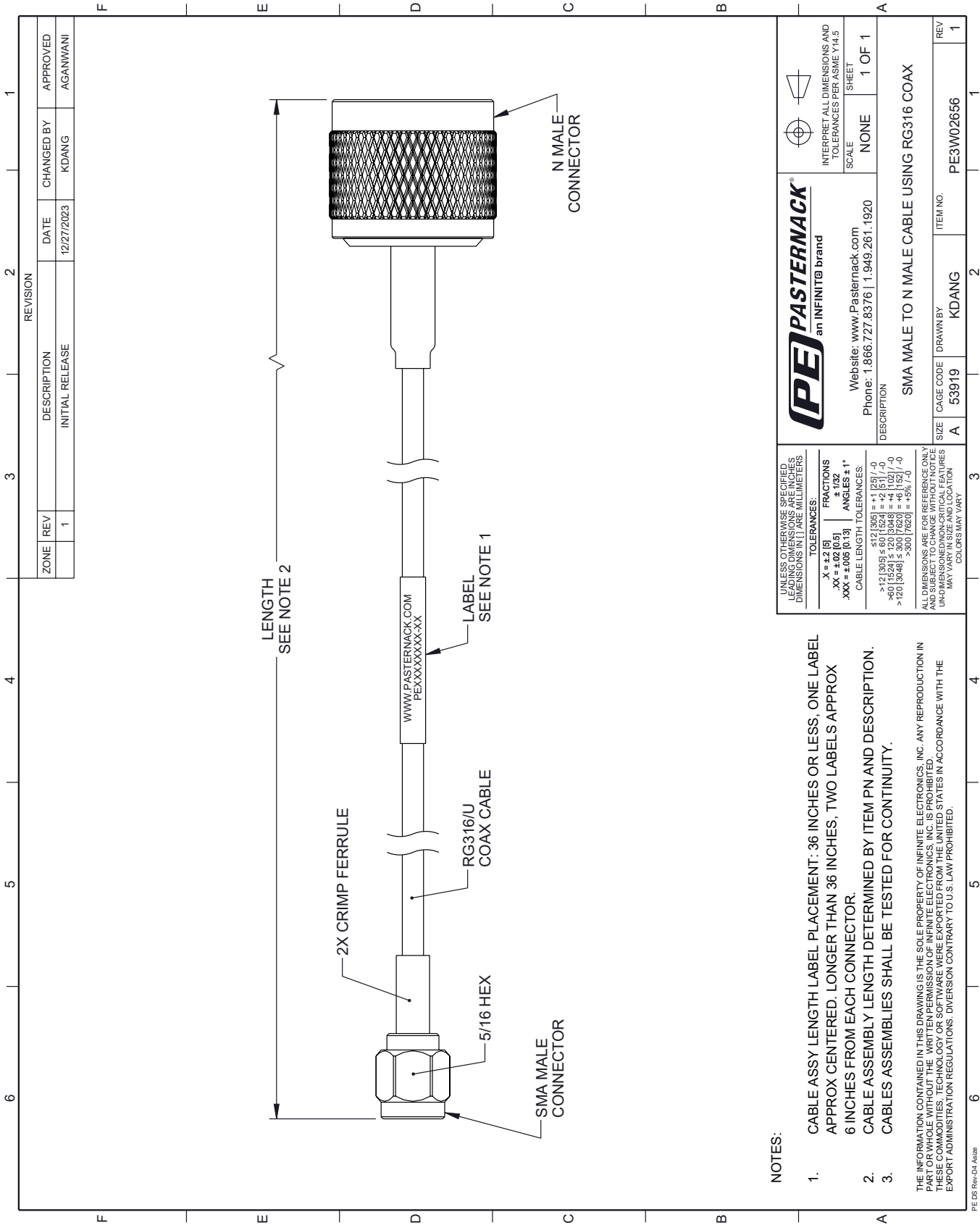
SMA Male to N Male Cable Using RG316 Coax from Pasternack Enterprises has same day shipment for domestic and International orders. Our RF, microwave and millimeter wave products maintain a 99.4% availability and are part of the broadest selection in the industry.

Click the following link (or enter part number in "SEARCH" on website) to obtain additional part information including price, inventory and certifications: [SMA Male to N Male Cable Using RG316 Coax PE3W02656](#)

URL: <https://www.pasternack.com/sma-male-to-n-male-cable-using-rg316-pe3w02656-p.aspx>

The information contained within this document is accurate to the best of our knowledge and representative of the part described herein. It may be necessary to make modifications to the part and/or the documentation of the part in order to implement improvements. Pasternack Enterprises reserves the right to make such changes as required. Unless otherwise stated, all specifications are nominal. Pasternack Enterprises does not make any representation or warranty regarding the suitability of the part described herein for any particular purpose, and Pasternack Enterprises does not assume liability arising out of the use of any part or document.

PE3W02656 CAD Drawing  
SMA Male to N Male Cable Using RG316 Coax



UNLESS OTHERWISE SPECIFIED, LEADING DIMENSIONS ARE IN INCHES, TRAILING DIMENSIONS IN MILLIMETERS

TOLERANCES:	
.X = ±.2 [5]	FRACTIONS ± 1/32
.XX = ±.02 [0.5]	ANGLES ± 1°
.XXX = ±.005 [0.13]	CABLE LENGTH TOLERANCES:

<12 [305]	±.12 [3.05]
>12 [305] &lt; 60 [1524]	±.12 [3.05]
>60 [1524] &lt; 120 [3048]	±.12 [3.05]
>120 [3048] &lt; 300 [7620]	±.12 [3.05]
>300 [7620]	±.12 [3.05]

ALL DIMENSIONS ARE FOR REFERENCE ONLY. DIMENSIONS NOTED AS MINIMUMS OR MAXIMUMS ARE NON-CRITICAL FEATURES. UNLESS OTHERWISE SPECIFIED, DIMENSIONS MAY VARY IN SIZE AND LOCATION. COLORS MAY VARY.

**PE PASTERNAK**  
an INFINITE brand

Website: [www.Pasternack.com](http://www.Pasternack.com)  
Phone: 1.866.727.8376 | 1.949.261.1920

INTERPRET ALL DIMENSIONS AND TOLERANCES PER ASME Y14.5

SCALE: NONE  
SHEET: 1 OF 1

DESCRIPTION: SMA MALE TO N MALE CABLE USING RG316 COAX

SIZE	CAGE CODE	DRAWN BY	ITEM NO.	REV
A	53919	KDANG	PE3W02656	1

NOTES:

- CABLE ASSY LENGTH LABEL PLACEMENT: 36 INCHES OR LESS, ONE LABEL APPROX CENTERED. LONGER THAN 36 INCHES, TWO LABELS APPROX 6 INCHES FROM EACH CONNECTOR.
- CABLE ASSEMBLY LENGTH DETERMINED BY ITEM PN AND DESCRIPTION.
- CABLES ASSEMBLIES SHALL BE TESTED FOR CONTINUITY.

THE INFORMATION CONTAINED IN THIS DRAWING IS THE SOLE PROPERTY OF INFINITE ELECTRONICS, INC. ANY REPRODUCTION IN PART OR WHOLE WITHOUT THE WRITTEN PERMISSION OF INFINITE ELECTRONICS, INC. IS PROHIBITED. THESE COMMODITIES, TECHNOLOGY OR SOFTWARE WERE EXPORTED FROM THE UNITED STATES IN ACCORDANCE WITH THE EXPORT ADMINISTRATION REGULATIONS. DIVERSION CONTRARY TO U.S. LAW PROHIBITED.

PE DS Rev-Q4 Asize