



7/16 DIN Male Right Angle to 7/16 DIN Male Right Angle Low Loss
Cable Using LMR-400 Coax with HeatShrink and 90 Deg. Clock

RF Cable Assemblies Technical Data Sheet

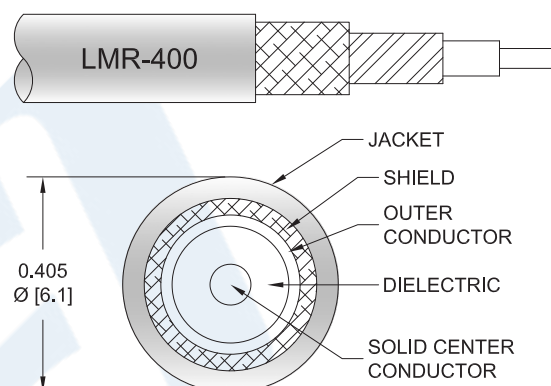
PE3W02697/SP2

Configuration

- Connector 1: 7/16 DIN Male Right Angle
- Connector 2: 7/16 DIN Male Right Angle
- Cable Type: LMR-400

Features

- Max Frequency 3 GHz
- Shielding Effectivity > 90 dB
- 85% Phase Velocity
- Double Shielded
- PE Jacket



Applications

- General Purpose
- Laboratory Use

Description

Pasternack's PE3W02697/SP2 7/16 DIN male right angle to 7/16 DIN male right angle cable using LMR-400 coax is part of our full line of RF components available for same-day shipping. Pasternack's flexible RF cable assemblies are ideal for applications where tight bends and flexure are required. This Pasternack 7/16 DIN to 7/16 DIN cable assembly has a male to male gender configuration with 50 ohm flexible LMR-400 coax. The PE3W02697/SP2 7/16 DIN male to 7/16 DIN male cable assembly operates to 3 GHz. The right angle 7/16 DIN interfaces on the LMR-400 cable allow for easier connections in tight spaces. The double shielding of this Pasternack cable assembly provides excellent shielding effectiveness of better than 90 dB.

Custom versions of most RF cable assemblies can be built and shipped same day. Custom cable assembly lengths can be obtained by specifying the desired length on the web site at time of order or by contacting a sales representative. Other available RF cable assembly value added services include connector orientation or clocking, heat shrink booting and custom labeling. RF testing can also be performed to document the electrical performance of your cable assembly.

Click the following link (or enter part number in "SEARCH" on website) to obtain additional part information including price, inventory and certifications: [7/16 DIN Male Right Angle to 7/16 DIN Male Right Angle Low Loss Cable Using LMR-400 Coax with HeatShrink and 90 Deg. Clock PE3W02697/SP2](#)



7/16 DIN Male Right Angle to 7/16 DIN Male Right Angle Low Loss
Cable Using LMR-400 Coax with HeatShrink and 90 Deg. Clock

RF Cable Assemblies Technical Data Sheet

PE3W02697/SP2

Electrical Specifications

Description	Minimum	Typical	Maximum	Units
Frequency Range	DC		3	GHz
VSWR			1.4:1	
Velocity of Propagation		85		%
RF Shielding	90			dB
Group Delay		1.2 [3.94]		ns/ft [ns/m]
Capacitance		23.9 [78.41]		pF/ft [pF/m]
Inductance		0.06 [0.2]		uH/ft [uH/m]
DC Resistance Inner Conductor		1.39 [4.56]		Ω/1000ft [Ω/Km]
DC Resistance Outer Conductor		1.65 [5.41]		Ω/1000ft [Ω/Km]
Jacket Spark			8,000	Vrms

Specifications by Frequency

Description	F1	F2	F3	F4	F5	Units
Frequency	0.1	0.25	0.5	1	3	GHz
Insertion Loss (Typ.)	0.052	0.02	0.028	0.041	0.074	dB/ft
	0.17	0.07	0.09	0.13	0.24	dB/m

Electrical Specification Notes:

Insertion Loss does not include the loss of the connectors. Insertion Loss is estimated as 0.2 dB for the right angle connector.

Mechanical Specifications

Cable Assembly

Weight 0.804 lbs [364.69 g]

Cable

Cable Type LMR-400
 Impedance 50 Ohms
 Inner Conductor Type Solid
 Inner Conductor Material and Plating Copper Clad Aluminum
 Dielectric Type PE (F)
 Number of Shields 2
 Shield Layer 1 Aluminum Tape
 Shield Layer 2 Tinned Copper Braid
 Jacket Material PE, Black
 Jacket Diameter 0.405 in [10.29 mm]

Click the following link (or enter part number in "SEARCH" on website) to obtain additional part information including price, inventory and certifications: [7/16 DIN Male Right Angle to 7/16 DIN Male Right Angle Low Loss Cable Using LMR-400 Coax with HeatShrink and 90 Deg. Clock PE3W02697/SP2](#)



7/16 DIN Male Right Angle to 7/16 DIN Male Right Angle Low Loss
Cable Using LMR-400 Coax with HeatShrink and 90 Deg. Clock

RF Cable Assemblies Technical Data Sheet

PE3W02697/SP2

One Time Minimum Bend Radius	1 in [25.4 mm]
Repeated Minimum Bend Radius	4 in [101.6 mm]
Bending Moment	0.5 lbs-ft [0.68 N-m]
Flat Plate Crush	40 lbs/in [0.71 Kg/mm]
Tensile Strength	160 lbs [72.57 Kg]

Connectors

Description	Connector 1	Connector 2
Type	7/16 DIN Male Right Angle	7/16 DIN Male Right Angle
Impedance	50 Ohms	50 Ohms
Contact Material and Plating	Spring Copper, Silver	Spring Copper, Silver
Contact Plating Specification	200μ In.	200μ In.
Dielectric Type	PTFE	PTFE
Body Material and Plating	Brass, Tri-Metal	Brass, Tri-Metal
Body Plating Specification	150μ In.	150μ In.
Coupling Nut Material and Plating	Brass, Tri-Metal	Brass, Tri-Metal
Coupling Nut Plating Specification	150μ In.	150μ In.

Environmental Specifications

Temperature

Operating Range -40 to +85 deg C

Compliance Certifications (see [product page](#) for current document)

Plotted and Other Data

Notes:

Click the following link (or enter part number in "SEARCH" on website) to obtain additional part information including price, inventory and certifications: [7/16 DIN Male Right Angle to 7/16 DIN Male Right Angle Low Loss Cable Using LMR-400 Coax with HeatShrink and 90 Deg. Clock PE3W02697/SP2](#)



7/16 DIN Male Right Angle to 7/16 DIN Male Right Angle Low Loss
Cable Using LMR-400 Coax with HeatShrink and 90 Deg. Clock

RF Cable Assemblies Technical Data Sheet

PE3W02697/SP2

How to Order

Part Number Configuration:

PE3W02697/SP2

- **xx**

uu

Unit of Measure:
cm = Centimeters
<blank> = Inches
Length
Base Number

Example: PE3W02697/SP2-12 = 12 inches long cable
PE3W02697/SP2-100cm = 100 cm long cable

7/16 DIN Male Right Angle to 7/16 DIN Male Right Angle Low Loss Cable Using LMR-400 Coax with HeatShrink and 90 Deg. Clock from Pasternack Enterprises has same day shipment for domestic and International orders. Our RF, microwave and millimeter wave products maintain a 99.4% availability and are part of the broadest selection in the industry.

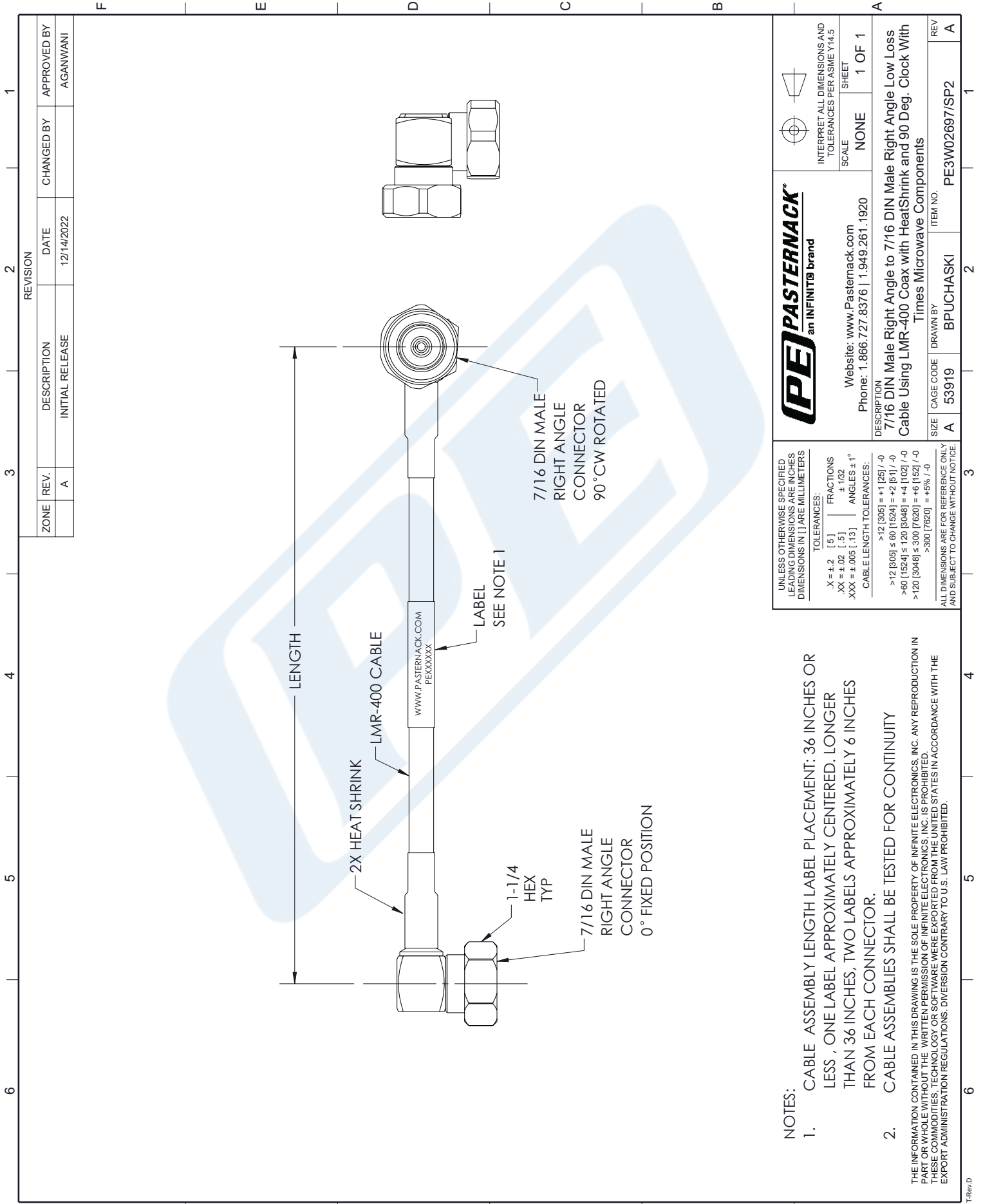
Click the following link (or enter part number in "SEARCH" on website) to obtain additional part information including price, inventory and certifications: [7/16 DIN Male Right Angle to 7/16 DIN Male Right Angle Low Loss Cable Using LMR-400 Coax with HeatShrink and 90 Deg. Clock PE3W02697/SP2](https://www.pasternack.com/7-16-din-male-right-angle-to-7-16-din-male-low-loss-cable-using-lmr-400-with-heatshrink-and-90-deg.-clock-pe3w02697-sp2-p.aspx)

URL: <https://www.pasternack.com/7-16-din-male-right-angle-to-7-16-din-male-low-loss-cable-using-lmr-400-with-heatshrink-and-90-deg.-clock-pe3w02697-sp2-p.aspx>

The information contained in this document is accurate to the best of our knowledge and representative of the part described herein. It may be necessary to make modifications to the part and/or the documentation of the part, in order to implement improvements. Pasternack reserves the right to make such changes as required. Unless otherwise stated, all specifications are nominal. Pasternack does not make any representation or warranty regarding the suitability of the part described herein for any particular purpose, and Pasternack does not assume any liability arising out of the use of any part or documentation.

PE3W02697/SP2 CAD Drawing

7/16 DIN Male Right Angle to 7/16 DIN Male Right Angle Low Loss
Cable Using LMR-400 Coax with HeatShrink and 90 Deg. Clock



NOTES:

1. CABLE ASSEMBLY LENGTH LABEL PLACEMENT: 36 INCHES OR LESS , ONE LABEL APPROXIMATELY CENTERED. LONGER THAN 36 INCHES, TWO LABELS APPROXIMATELY 6 INCHES FROM EACH CONNECTOR.
2. CABLE ASSEMBLIES SHALL BE TESTED FOR CONTINUITY

THE INFORMATION CONTAINED IN THIS DRAWING IS THE SOLE PROPERTY OF INFINITE ELECTRONICS, INC. ANY REPRODUCTION IN PART OR WHOLE WITHOUT THE WRITTEN PERMISSION OF INFINITE ELECTRONICS, INC. IS PROHIBITED. THESE COMMODITIES, TECHNOLOGY OR SOFTWARE WERE EXPORTED FROM THE UNITED STATES IN ACCORDANCE WITH THE EXPORT ADMINISTRATION REGULATIONS. DIVERSION CONTRARY TO U.S. LAW PROHIBITED.

UNLESS OTHERWISE SPECIFIED LEADING DIMENSIONS ARE INCHES DIMENSIONS IN [] ARE MILLIMETERS	
TOLERANCES:	
X = ±.2 [.5]	FRACTIONS ± 1/32
.XX = ±.02 [.3]	ANGLES ± 1°
XXX = ±.005 [.13]	CABLE LENGTH TOLERANCES:
	>12 [305] = +1 [25] / -0
	>12 [305] ≤ 60 [1524] = +2 [51] / -0
	>60 [1524] ≤ 120 [3048] = +4 [102] / -0
	>120 [3048] ≤ 300 [7620] = +6 [152] / -0
	>300 [7620] = +5% / -0
ALL DIMENSIONS ARE FOR REFERENCE ONLY AND SUBJECT TO CHANGE WITHOUT NOTICE.	

PE PASTERNAK an INFINITO brand	
Website: www.Pasternack.com Phone: 1.866.727.8376 1.949.261.1920	
INTERPRET ALL DIMENSIONS AND TOLERANCES PER ASME Y14.5	SHEET 1 OF 1
DESCRIPTION 7/16 DIN Male Right Angle to 7/16 DIN Male Right Angle Low Loss Cable Using LMR-400 Coax with HeatShrink and 90 Deg. Clock With Times Microwave Components	
SIZE	ITEM NO.
A 53919	BPUCHASKI
REV	REV
A	A