

SMA Male to SMB Plug Right Angle Cable Using RG174 Coax with HeatShrink



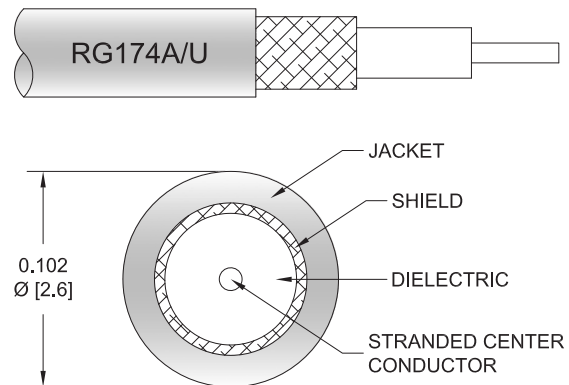
PE3W03030/HS

Configuration

- Connector 1: SMA Male
- Connector 2: SMB Plug Right Angle
- Cable Type: RG174
- Coax Flex Type: Flexible

Features

- Max Frequency 1 GHz
- 66% Phase Velocity
- PVC Jacket



Applications

- General Purpose
- Laboratory Use

Description

Pasternack's PE3W03030/HS SMA male to SMB plug right angle cable using RG174 coax is part of our full line of RF components available for same-day shipping. Pasternack's flexible RF cable assemblies are ideal for applications where tight bends and flexure are required. This Pasternack SMA to SMB cable assembly has a male to plug gender configuration with 50 ohm flexible RG174 coax. The PE3W03030/HS SMA male to SMB plug cable assembly operates to 1 GHz. The right angle SMB interface on the RG174 cable allows for easier connections in tight spaces.

Custom versions of most RF cable assemblies can be built and shipped same day. Custom cable assembly lengths can be obtained by specifying the desired length on the web site at time of order or by contacting a sales representative. Other available RF cable assembly value added services include connector orientation or clocking, heat shrink booting and custom labeling. RF testing can also be performed to document the electrical performance of your cable assembly.

Electrical Specifications

Description	Minimum	Typical	Maximum	Units
Frequency Range	DC		1	GHz
VSWR			1.4:1	
Velocity of Propagation		66		%
Capacitance		31.08 [101.97]		pF/ft [pF/m]

Specifications by Frequency

SMA Male to SMB Plug Right Angle Cable
Using RG174 Coax with HeatShrink



PE3W03030/HS

Part Number	Length	Description	F1	F2	F3	F4	F5	Units	Weight (lbs)
			Frequency		50	100	250	500	
PE3W03030/HS	Custom Lengths Available	Insertion Loss (Typ.)	0.04	0.08	0.14	0.21	0.32	dB/ft	
			0.14	0.28	0.45	0.7	1.05	dB/m	
PE3W03030/HS-12	12 inch	Insertion Loss (Typ.)	0.35	0.39	0.44	0.52	0.62	dB	0.033
PE3W03030/HS-24	24 inch	Insertion Loss (Typ.)	0.39	0.47	0.58	0.73	0.94	dB	0.042
PE3W03030/HS-36	36 inch	Insertion Loss (Typ.)	0.43	0.56	0.72	0.94	1.26	dB	0.051
PE3W03030/HS-48	48 inch	Insertion Loss (Typ.)	0.47	0.64	0.85	1.15	1.58	dB	0.06
PE3W03030/HS-72	72 inch	Insertion Loss (Typ.)	0.56	0.81	1.13	1.57	2.22	dB	0.078

The insertion loss data for the base model does not include loss due to the connectors. Each length includes insertion loss due to the connectors.

Loss due to Connector 1:	0.1 dB
Loss due to Connector 2:	0.2 dB
Base Weight:	0.033 pounds
Additional Weight per Inch:	0.00075 pounds

Mechanical Specifications

Cable Assembly

Width/Diameter	0.5 in [12.7 mm]
Weight	0.024 lbs [10.89 g]

Cable

Cable Type	RG174
Impedance	50 Ohms
Inner Conductor Type	Stranded
Inner Conductor Material and Plating	Copper Clad Steel
Dielectric Type	PE
Number of Shields	1
Shield Layer 1	Tinned Copper Braid
Jacket Material	PVC, Black
Jacket Diameter	0.11 in [2.79 mm]

SMA Male to SMB Plug Right Angle Cable
Using RG174 Coax with HeatShrink



PE3W03030/HS

Connectors

Description	Connector 1	Connector 2
Type	SMA Male	SMB Plug Right Angle
Specification		MIL-STD-348A
Impedance	50 Ohms	50 Ohms
Configuration	Straight	Right Angle
Contact Material and Plating	Brass, Gold	Beryllium Copper, Gold
Contact Plating Specification		30 µin minimum
Dielectric Type	PTFE	PTFE
Outer Conductor Material and Plating		Brass, Nickel
Outer Conductor Plating Specification		100 µin minimum
Body Material and Plating	Brass, Gold	Brass, Nickel
Body Plating Specification		100 µin minimum
Coupling Nut Material and Plating	Brass, Gold	
Hex Size	5/16 in	
Torque	5 in-lbs 0.57 Nm	

Environmental Specifications

Compliance Certifications (see [product page](#) for current document)

Plotted and Other Data

Notes:

SMA Male to SMB Plug Right Angle Cable Using RG174 Coax with HeatShrink



PE3W03030/HS

Typical Performance Data

How to Order

Part Number Configuration:

PE3W03030/HS - xx uu



Example: PE3W03030/HS-12 = 12 inches long cable
PE3W03030/HS-100cm = 100 cm long cable

SMA Male to SMB Plug Right Angle Cable Using RG174 Coax with HeatShrink from Pasternack Enterprises has same day shipment for domestic and International orders. Our RF, microwave and millimeter wave products maintain a 99.4% availability and are part of the broadest selection in the industry.

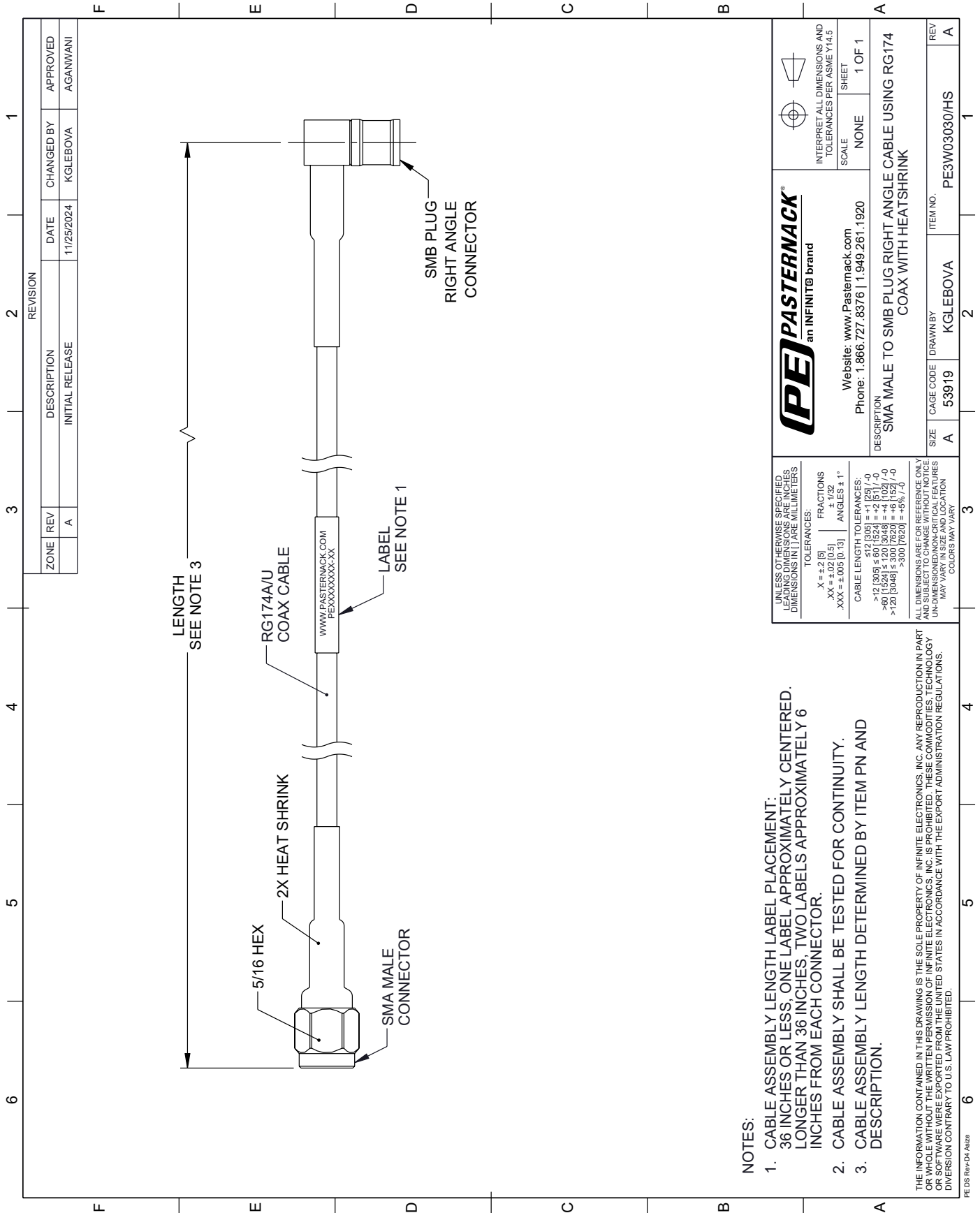
Click the following link (or enter part number in "SEARCH" on website) to obtain additional part information including price, inventory and certifications: [SMA Male to SMB Plug Right Angle Cable Using RG174 Coax with HeatShrink PE3W03030/HS](https://www.pasternack.com/sma-male-to-smb-plug-right-angle-cable-using-rg174-coax-with-heatshrink-pe3w03030-hs)

URL: <https://www.pasternack.com/sma-male-to-smb-plug-cable-using-rg174-with-heatshrink-pe3w03030-hs-p.aspx>

The information contained within this document is accurate to the best of our knowledge and representative of the part described herein. It may be necessary to make modifications to the part and/or the documentation of the part in order to implement improvements. Pasternack Enterprises reserves the right to make such changes as required. Unless otherwise stated, all specifications are nominal. Pasternack Enterprises does not make any representation or warranty regarding the suitability of the part described herein for any particular purpose, and Pasternack Enterprises does not assume liability arising out of the use of any part or document.

PE3W03030/HS CAD Drawing

SMA Male to SMB Plug Right Angle Cable Using RG174 Coax with HeatShrink



NOTES:

1. CABLE ASSEMBLY LENGTH LABEL PLACEMENT: 36 INCHES OR LESS, ONE LABEL APPROXIMATELY CENTERED. LONGER THAN 36 INCHES, TWO LABELS APPROXIMATELY 6 INCHES FROM EACH CONNECTOR.
2. CABLE ASSEMBLY SHALL BE TESTED FOR CONTINUITY.
3. CABLE ASSEMBLY LENGTH DETERMINED BY ITEM PN AND DESCRIPTION.

THE INFORMATION CONTAINED IN THIS DRAWING IS THE SOLE PROPERTY OF INFINITE ELECTRONICS, INC. ANY REPRODUCTION IN PART OR WHOLE WITHOUT THE WRITTEN PERMISSION OF INFINITE ELECTRONICS, INC. IS PROHIBITED. THESE COMMODITIES, TECHNOLOGY OR SOFTWARE WERE EXPORTED FROM THE UNITED STATES IN ACCORDANCE WITH THE EXPORT ADMINISTRATION REGULATIONS. DIVERSION CONTRARY TO U.S. LAW PROHIBITED.

PE DS Rev-04 A1822

		INTERPRET ALL DIMENSIONS AND TOLERANCES PER ASME Y14.5 SCALE: NONE SHEET: 1 OF 1	
Website: www.Pasternack.com Phone: 1.866.727.8376 1.949.261.1920		DESCRIPTION: SMA MALE TO SMB PLUG RIGHT ANGLE CABLE USING RG174 COAX WITH HEATSHRINK	
SIZE: A	CAGE CODE: 53919	DRAWN BY: KGLEBOVA	ITEM NO.: PE3W03030/HS
UNLESS OTHERWISE SPECIFIED LEADING DIMENSIONS ARE INCHES DIMENSIONS IN PAREMILLIMETERS		ALL DIMENSIONS ARE FOR REFERENCE ONLY UNLESS OTHERWISE SPECIFIED. DIMENSIONS ON CRITICAL FEATURES MAY VARY IN SIZE AND LOCATION. COLORS MAY VARY.	
TOLERANCES: .X = ±.2 [5] FRACTIONS ± 1/32 .XX = ±.02 [0.5] ANGLES ± 1° .XXX = ±.005 [0.13]		CABLE LENGTH TOLERANCES: >12 [305] ≤ 60 [1524] = +1 [25] / -0 >60 [1524] ≤ 120 [3048] = +4 [102] / -0 >120 [3048] ≤ 600 [15240] = +5 [127] / -0 >600 [15240] ≤ 3600 [91440] = +5 [127] / -0	

REVISION			
ZONE	REV	DESCRIPTION	DATE
	A	INITIAL RELEASE	11/25/2024
		CHANGED BY	KGLEBOVA
		APPROVED	AGANWANI