



N Male to N Female Bulkhead Low Loss
Cable Using LMR-240 Coax

TECHNICAL DATA SHEET

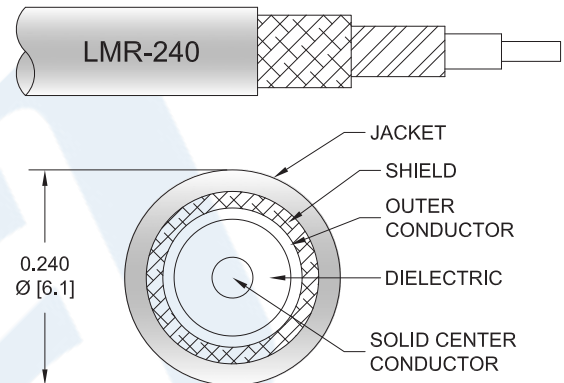
PE3W03062

Configuration

- Connector 1: N Male
- Connector 2: N Female Bulkhead
- Cable Type: LMR-240
- Coax Flex Type: Flexible

Features

- Shielding Effectivity > 90 dB
- 84% Phase Velocity
- Double Shielded
- PE Jacket



Applications

- General Purpose
- Laboratory Use

Description

Pasternack's PE3W03062 type N male to type N female bulkhead cable using LMR-240 coax is part of our full line of RF components available for same-day shipping. Pasternack's flexible RF cable assemblies are ideal for applications where tight bends and flexure are required. This Pasternack type N to type N cable assembly has a male to female gender configuration with 50 ohm flexible LMR-240 coax. Our RF cable assembly with type N bulkhead interface allows designers to create external connections on their product enclosures, and can be used in a variety of other rack mount and panel mount applications. The double shielding of this Pasternack cable assembly provides excellent shielding effectiveness of better than 90 dB.

Custom versions of most RF cable assemblies can be built and shipped same day. Custom cable assembly lengths can be obtained by specifying the desired length on the web site at time of order or by contacting a sales representative. Other available RF cable assembly value added services include connector orientation or clocking, heat shrink booting and custom labeling. RF testing can also be performed to document the electrical performance of your cable assembly.

Click the following link (or enter part number in "SEARCH" on website) to obtain additional part information including price, inventory and certifications: [N Male to N Female Bulkhead Low Loss Cable Using LMR-240 Coax PE3W03062](#)



N Male to N Female Bulkhead Low Loss Cable Using LMR-240 Coax

TECHNICAL DATA SHEET

PE3W03062

Electrical Specifications

Description	Minimum	Typical	Maximum	Units
Velocity of Propagation		84		%
RF Shielding	90			dB
Group Delay		1.21 [3.97]		ns/ft [ns/m]
Capacitance		24.2 [79.4]		pF/ft [pF/m]
Inductance		0.06 [0.2]		uH/ft [uH/m]
DC Resistance Inner Conductor		3.2 [10.5]		Ω /1000ft [Ω /Km]
DC Resistance Outer Conductor		3.89 [12.76]		Ω /1000ft [Ω /Km]
Jacket Spark			5,000	Vrms

Mechanical Specifications

Cable Assembly

Weight 0.202 lbs [91.63 g]

Cable

Cable Type LMR-240
 Impedance 50 Ohms
 Inner Conductor Type Solid
 Inner Conductor Material and Plating Copper
 Dielectric Type PE (F)
 Number of Shields 2
 Shield Layer 1 Aluminum Tape
 Shield Layer 2 Tinned Copper Braid
 Jacket Material PE, Black
 Jacket Diameter 0.24 in [6.1 mm]

One Time Minimum Bend Radius 0.75 in [19.05 mm]
 Repeated Minimum Bend Radius 2.5 in [63.5 mm]
 Bending Moment 0.25 lbs-ft [0.34 N-m]
 Flat Plate Crush 20 lbs/in [0.36 Kg/mm]
 Tensile Strength 80 lbs [36.29 Kg]

Click the following link (or enter part number in "SEARCH" on website) to obtain additional part information including price, inventory and certifications: [N Male to N Female Bulkhead Low Loss Cable Using LMR-240 Coax PE3W03062](#)



N Male to N Female Bulkhead Low Loss Cable Using LMR-240 Coax

TECHNICAL DATA SHEET

PE3W03062

Connectors

Description	Connector 1	Connector 2
Type	N Male Threaded	N Female Bulkhead Threaded
Specification	MIL-STD-348	MIL-STD-348A
Impedance	50 Ohms	50 Ohms
Mating Cycles		500
Contact Material and Plating	Beryllium Copper, Gold	Brass, Gold
Contact Plating Specification	ASTM-B488	30 µin minimum
Dielectric Type	Teflon	PTFE
Body Material and Plating	Brass, Tri-Metal	Brass, Tri-Metal
Body Plating Specification	QQ-N-290	
Coupling Nut Material and Plating	Brass, Tri-Metal	
Coupling Nut Plating Specification	QQ-N-290	

Compliance Certifications (see [product page](#) for current document)

Plotted and Other Data

Notes:

Click the following link (or enter part number in "SEARCH" on website) to obtain additional part information including price, inventory and certifications: [N Male to N Female Bulkhead Low Loss Cable Using LMR-240 Coax PE3W03062](#)



N Male to N Female Bulkhead Low Loss Cable Using LMR-240 Coax

TECHNICAL DATA SHEET

PE3W03062

How to Order

Part Number Configuration:

PE3W03062

- **xx**

uu

Unit of Measure:
cm = Centimeters
<blank> = Inches
Length
Base Number

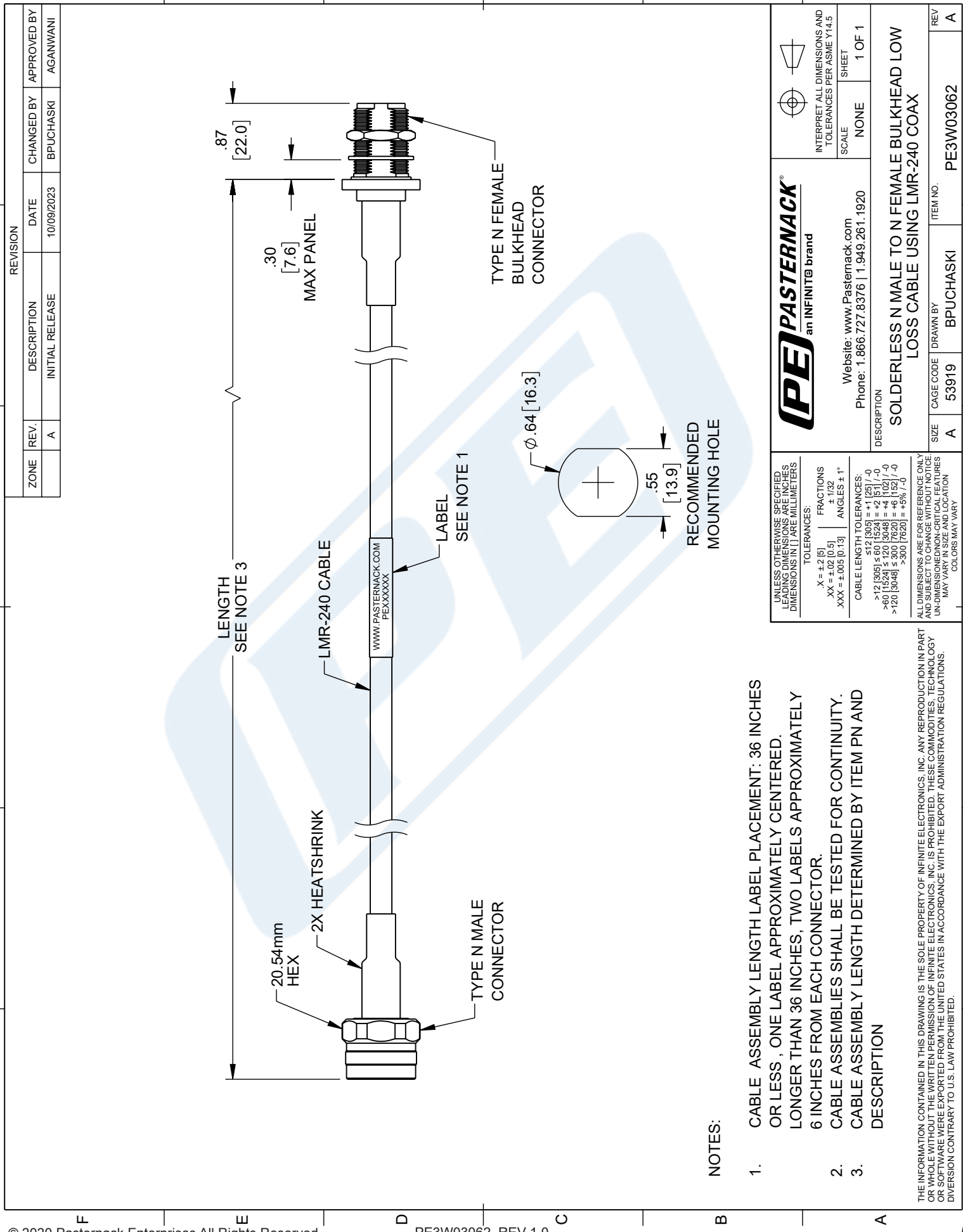
Example: PE3W03062-12 = 12 inches long cable
PE3W03062-100cm = 100 cm long cable

N Male to N Female Bulkhead Low Loss Cable Using LMR-240 Coax from Pasternack Enterprises has same day shipment for domestic and International orders. Our RF, microwave and millimeter wave products maintain a 99.4% availability and are part of the broadest selection in the industry.

Click the following link (or enter part number in "SEARCH" on website) to obtain additional part information including price, inventory and certifications: [N Male to N Female Bulkhead Low Loss Cable Using LMR-240 Coax PE3W03062](#)

URL: <https://www.pasternack.com/n-male-to-n-female-bulkhead-low-loss-cable-using-lmr-240-pe3w03062-p.aspx>

The information contained in this document is accurate to the best of our knowledge and representative of the part described herein. It may be necessary to make modifications to the part and/or the documentation of the part, in order to implement improvements. Pasternack reserves the right to make such changes as required. Unless otherwise stated, all specifications are nominal. Pasternack does not make any representation or warranty regarding the suitability of the part described herein for any particular purpose, and Pasternack does not assume any liability arising out of the use of any part or documentation.



 an INFINIT@ brand		INTERPRET ALL DIMENSIONS AND TOLERANCES PER ASME Y14.5	
Website: www.Pasternack.com Phone: 1.866.727.8376 1.949.261.1920		SCALE	SHEET
DESCRIPTION SOLDERLESS N MALE TO N FEMALE BULKHEAD LOW LOSS CABLE USING LMR-240 COAX		NONE	1 OF 1
SIZE A	CAGE CODE 53919	DRAWN BY BPUCHASKI	REV A
UNLESS OTHERWISE SPECIFIED, LEADING DIMENSIONS ARE IN INCHES, DIMENSIONS IN [] ARE MILLIMETERS.		TOLERANCES:	
XX = ±.02 [0.5]		FRACTIONS ± 1/32	
XXX = ±.005 [0.13]		ANGLES ± 1°	
CABLE LENGTH TOLERANCES:		ALL DIMENSIONS ARE FOR REFERENCE ONLY. UNLESS OTHERWISE SPECIFIED, DIMENSIONS ARE IN INCHES. UNLESS OTHERWISE SPECIFIED, DIMENSIONS IN [] ARE MILLIMETERS.	
>12 [305] ≤ 300 [7620] = ±.005 [0.13] / -0		MAY VARY IN SIZE AND LOCATION	
>60 [1524] ≤ 120 [3048] = ±.005 [0.13] / -0		COLORS MAY VARY	
>120 [3048] ≤ 300 [7620] = ±.005 [0.13] / -0			
>300 [7620] = ±.005 [0.13] / -0			