



2.4mm Female Bulkhead to SMA Male Cable Using PE-SR405FL Coax

RF Cable Assemblies Technical Data Sheet

PE3W03550

Configuration

- Connector 1: 2.4mm Female Bulkhead
- Connector 2: SMA Male
- Cable Type: PE-SR405FL

Features

- Max Frequency 18 GHz
- 69.5% Phase Velocity

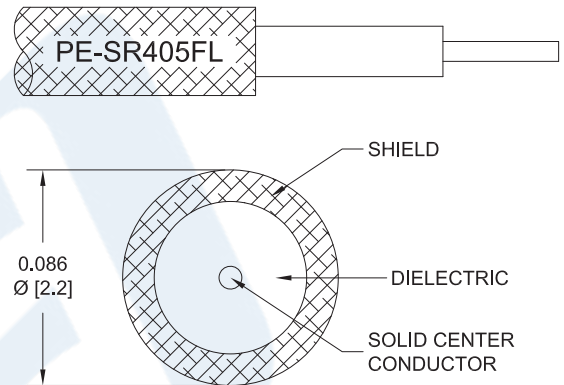
Applications

- General Purpose
- Laboratory Use

Description

Pasternack's PE3W03550 2.4mm female bulkhead to SMA male cable using PE-SR405FL coax is part of our full line of RF components available for same-day shipping. Pasternack's formable RF cable assemblies provide an alternative to costly pre-formed semi-rigid assemblies since they are hand formable. This Pasternack 2.4mm to SMA cable assembly has a female to male gender configuration with 50 ohm formable PE-SR405FL coax. The PE3W03550 2.4mm female to SMA male cable assembly operates to 18 GHz. Our RF cable assembly with 2.4mm bulkhead interface allows designers to create external connections on their product enclosures, and can be used in a variety of other rack mount and panel mount applications.

Custom versions of most RF cable assemblies can be built and shipped same day. Custom cable assembly lengths can be obtained by specifying the desired length on the web site at time of order or by contacting a sales representative. Other available RF cable assembly value added services include connector orientation or clocking, heat shrink booting and custom labeling. RF testing can also be performed to document the electrical performance of your cable assembly.



Click the following link (or enter part number in "SEARCH" on website) to obtain additional part information including price, inventory and certifications: [2.4mm Female Bulkhead to SMA Male Cable Using PE-SR405FL Coax PE3W03550](#)



2.4mm Female Bulkhead to SMA Male Cable Using PE-SR405FL Coax

RF Cable Assemblies Technical Data Sheet

PE3W03550

Electrical Specifications

Description	Minimum	Typical	Maximum	Units
Frequency Range	DC		18	GHz
VSWR			1.45:1	
Velocity of Propagation		69.5		%
Capacitance		29 [95.14]		pF/ft [pF/m]
DC Resistance Inner Conductor Km]		65.7 [215.55]		Ohms/1000ft [Ohms/
DC Resistance Outer Conductor Km]		10.2 [33.46]		Ohms/1000ft [Ohms/

Specifications by Frequency

Description	F1	F2	F3	F4	F5	Units
Frequency	1	2	4.5	9	18	GHz
Insertion Loss (Max.)	0.23	0.28	0.4	0.64	1.1	dB/ft
	0.75	0.92	1.31	2.1	3.61	dB/m

Electrical Specification Notes:

Insertion Loss does not include the loss of connectors. Insertion Loss is estimated as 0.2dB of connector loss

Mechanical Specifications

Cable Assembly

Diameter 0.375 in [9.53 mm]

Cable

Cable Type PE-SR405FL
 Impedance 50 Ohms
 Inner Conductor Type Solid
 Inner Conductor Material and Plating Copper Clad Steel, Silver
 Dielectric Type PTFE
 Number of Shields 1
 Outer Conductor Material and Plating Copper, Tin

Repeated Minimum Bend Radius 0.78 in [19.81 mm]

Click the following link (or enter part number in "SEARCH" on website) to obtain additional part information including price, inventory and certifications: [2.4mm Female Bulkhead to SMA Male Cable Using PE-SR405FL Coax PE3W03550](#)



2.4mm Female Bulkhead to SMA Male
Cable Using PE-SR405FL Coax

RF Cable Assemblies Technical Data Sheet

PE3W03550

Connectors

Description	Connector 1	Connector 2
Type	2.4mm Female Bulkhead	SMA Male
Specification	IEEE-STD-P287	MIL-STD-348A
Impedance	50 Ohms	50 Ohms
Contact Material and Plating	Beryllium Copper, Gold over Nickel	Brass, Gold
Contact Plating Specification	50 µin minimum	50µ in. minimum
Dielectric Type	PEI	Teflon
Body Material and Plating	Passivated Stainless Steel	Brass, Gold
Body Plating Specification	SAE-AMS-2700	3µ in. minimum
Coupling Nut Material and Plating		Brass, Gold
Coupling Nut Plating Specification		3µ in. minimum
Hex Size		5/16 Inch
Torque		3 in-lbs [0.34 Nm]

Mechanical Specification Notes:

*All cable assemblies have a length tolerance of 1.5% or ± 3/8", whichever is greater.

Compliance Certifications (see [product page](#) for current document)

Plotted and Other Data

Notes:

Click the following link (or enter part number in "SEARCH" on website) to obtain additional part information including price, inventory and certifications: [2.4mm Female Bulkhead to SMA Male Cable Using PE-SR405FL Coax PE3W03550](#)



2.4mm Female Bulkhead to SMA Male Cable Using PE-SR405FL Coax

RF Cable Assemblies Technical Data Sheet

PE3W03550

How to Order

Part Number Configuration:

PE3W03550

- **xx**

uu

Unit of Measure:

cm = Centimeters

<blank> = Inches

Length

Base Number

Example: PE3W03550-12 = 12 inches long cable
PE3W03550-100cm = 100 cm long cable

2.4mm Female Bulkhead to SMA Male Cable Using PE-SR405FL Coax from Pasternack Enterprises has same day shipment for domestic and International orders. Our RF, microwave and millimeter wave products maintain a 99.4% availability and are part of the broadest selection in the industry.

Click the following link (or enter part number in "SEARCH" on website) to obtain additional part information including price, inventory and certifications: [2.4mm Female Bulkhead to SMA Male Cable Using PE-SR405FL Coax PE3W03550](https://www.pasternack.com/2.4mm-female-sma-male-pe-sr405fl-cable-assembly-pe3w03550-p.aspx)

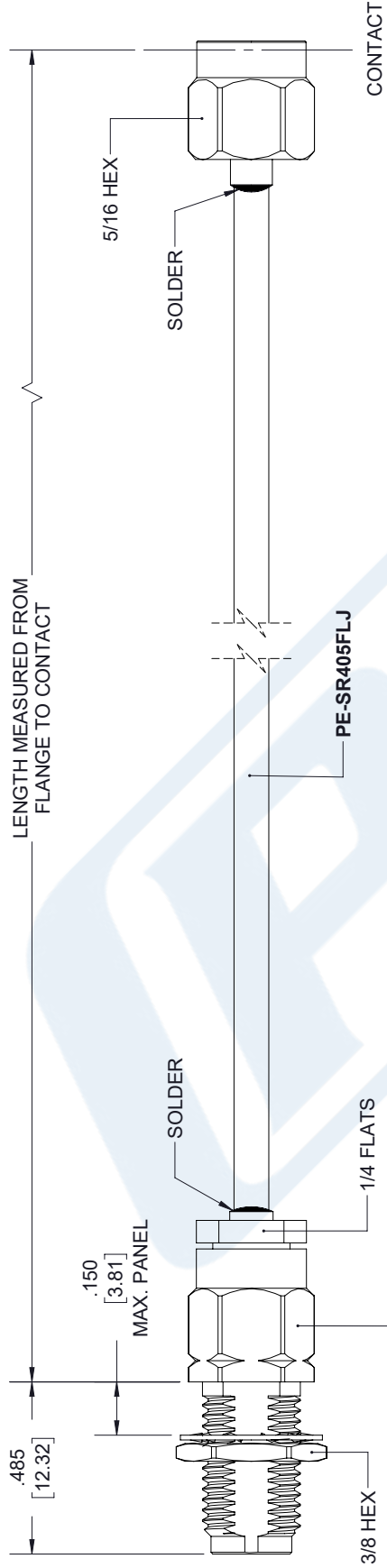
URL: <https://www.pasternack.com/2.4mm-female-sma-male-pe-sr405fl-cable-assembly-pe3w03550-p.aspx>

The information contained in this document is accurate to the best of our knowledge and representative of the part described herein. It may be necessary to make modifications to the part and/or the documentation of the part, in order to implement improvements. Pasternack reserves the right to make such changes as required. Unless otherwise stated, all specifications are nominal. Pasternack does not make any representation or warranty regarding the suitability of the part described herein for any particular purpose, and Pasternack does not assume any liability arising out of the use of any part or documentation.

PE3W03550 CAD Drawing

2.4mm Female Bulkhead to SMA Male Cable Using PE-SR405FL Coax

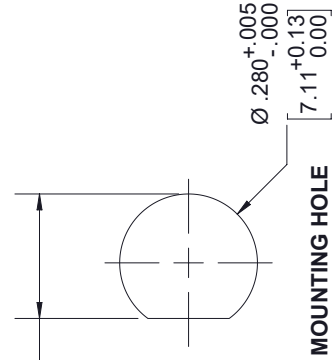
REVISIONS			
REV.	DESCRIPTION	DATE	APPROVED
A	INITIAL RELEASE	04/23/19	S.ELLIS



2.4mm FEMALE BULKHEAD

SMA MALE

$.253^{+.005}_{-.000}$
 $[6.43^{+0.13}_{0.00}]$



MOUNTING HOLE

UNLESS OTHERWISE SPECIFIED
 LEADING DIMENSIONS ARE IN INCHES
 DIMENSIONS IN [] ARE MILLIMETERS

TOLERANCES:
 X±.2 [5.08] FRACTIONS
 .XX±.01 [.25] ±.132
 .XXX±.005 [.13] ANGLES ± 1°

ALL DIMENSIONS SHOWN
 ARE FOR REFERENCE ONLY.

THIRD-ANGLE PROJECTION



Pasternack Enterprises, Inc.
 P.O. Box 16759, Irvine, CA 92623.
 Phone: 1.949.261.1920 | 1.866.727.8376
 Fax: 1.949.261.7451
 www.pasternack.com | e-mail: sales@pasternack.com

THE INFORMATION AND
 DESIGN IN THIS DOCUMENT
 IS THE PROPERTY OF
 PASTERNAK CORPORATION.
 ALL RIGHTS RESERVED.

SHEET 1 OF 1
 SCALE N/A

SIZE	CAGE	DRAWN BY	PART NUMBER	REV
A	53919	K.DANG	PE3W03550	A

THESE COMMODITIES, TECHNOLOGY OR SOFTWARE WERE EXPORTED FROM THE UNITED STATES IN ACCORDANCE WITH THE EXPORT ADMINISTRATION REGULATIONS. DIVERSION CONTRARY TO U.S. LAW PROHIBITED.