

Push-On SMP Female to SMP Female Right Angle Cable Using PE-SR405FLJ Coax

PE3W03710



Configuration

- Connector 1: Push-On SMP Female
- Connector 2: SMP Female Right Angle
- Cable Type: PE-SR405FLJ
- Coax Flex Type: Formable

Features

- Max Frequency 8 GHz
- Shielding Effectivity > 100 dB
- 69.5% Phase Velocity
- FEP Jacket



Applications

- General Purpose
- Laboratory Use

Description

Pasternack's PE3W03710 SMP female push-on to SMP female right angle cable using PE-SR405FLJ coax is part of our full line of RF components available for same-day shipping. Pasternack's formable RF cable assemblies provide an alternative to costly pre-formed semi-rigid assemblies since they are hand formable. This Pasternack SMP to SMP cable assembly has a female to female gender configuration with 50 ohm formable PE-SR405FLJ coax. The PE3W03710 SMP female to SMP female cable assembly operates to 8 GHz. The right angle SMP interface on the PE-SR405FLJ cable allows for easier connections in tight spaces.

Custom versions of most RF cable assemblies can be built and shipped same day. Custom cable assembly lengths can be obtained by specifying the desired length on the web site at time of order or by contacting a sales representative. Other available RF cable assembly value added services include connector orientation or clocking, heat shrink booting and custom labeling. RF testing can also be performed to document the electrical performance of your cable assembly.

Electrical Specifications

Description	Minimum	Typical	Maximum	Units
Frequency Range	DC		8	
VSWR			1.4:1	
Velocity of Propagation		69.5		%
RF Shielding	100			dB
Group Delay		1.43 [4.69]		ns/ft [ns/m]
Capacitance		29 [95.14]		pF/ft [pF/m]

Specifications by Frequency

Push-On SMP Female to SMP Female Right Angle Cable Using PE-SR405FLJ Coax



PE3W03710

Part Number	Length	Description	F1	F2	F3	F4	F5	Units	Weight (lbs)
		Frequency	500	1000	2000	4000	8000	MHz	
PE3W03710	Custom Lengths Available	Insertion Loss (Typ.)	0.15	0.23	0.3	0.46	0.7	dB/ft	
			0.5	0.74	0.99	1.51	2.3	dB/m	
PE3W03710-6	6 inch	Insertion Loss (Typ.)	0.38	0.42	0.45	0.53	0.65	dB	0.051
PE3W03710-9	9 inch	Insertion Loss (Typ.)	0.42	0.47	0.53	0.65	0.83	dB	0.055
PE3W03710-12	12 inch	Insertion Loss (Typ.)	0.45	0.53	0.6	0.76	1	dB	0.058
PE3W03710-18	18 inch	Insertion Loss (Typ.)	0.53	0.64	0.75	0.99	1.35	dB	0.066
PE3W03710-24	24 inch	Insertion Loss (Typ.)	0.6	0.75	0.9	1.22	1.7	dB	0.073

The insertion loss data for the base model does not include loss due to the connectors. Each length includes insertion loss due to the connectors.

Loss due to Connector 1:	0.1 dB
Loss due to Connector 2:	0.2 dB
Base Weight:	0.058 pounds
Additional Weight per Inch:	0.00117 pounds

Mechanical Specifications

Cable Assembly

Weight	0.058 lbs [26.31 g]
--------	---------------------

Cable

Cable Type	PE-SR405FLJ
Impedance	50 Ohms
Inner Conductor Type	Solid
Inner Conductor Material and Plating	Copper Clad Steel, Silver
Dielectric Type	PTFE
Number of Shields	1
Outer Conductor 1 Material and Plating	Tinned Copper Composite Braid
Jacket Material	FEP, Black
Jacket Diameter	0.098 in [2.49 mm]
One Time Minimum Bend Radius	0.236 in [5.99 mm]
Repeated Minimum Bend Radius	0.787 in [19.99 mm]

Push-On SMP Female to SMP Female Right Angle Cable Using PE-SR405FLJ Coax



PE3W03710

Connectors

Description	Connector 1	Connector 2
Type	SMP Female	SMP Female Right Angle
Specification	MIL-STD-348A	MIL-STD-348
Impedance	50 Ohms	50 Ohms
Configuration	Straight	Right Angle
Connection Method	Push-On	
Contact Material and Plating	Beryllium Copper, Gold	Beryllium Copper, Gold
Contact Plating Specification	MIL-DTL-45204	MIL-G-45204
Dielectric Type	PTFE	PTFE
Outer Conductor Material and Plating	Beryllium Copper, Gold	
Outer Conductor Plating Specification	MIL-DTL-45204	
Body Material and Plating	Beryllium Copper, Gold	Beryllium Copper, Gold
Body Plating Specification	MIL-DTL-45204	MIL-G-45204

Environmental Specifications

Operating Range Temperature -55 to +125 deg C

Compliance Certifications (see [product page](#) for current document)

Plotted and Other Data

Notes:

Push-On SMP Female to SMP Female Right Angle Cable Using PE-SR405FLJ Coax



PE3W03710

Typical Performance Data

How to Order

Part Number Configuration:

PE3W03710

- xx

uu

Unit of Measure:
cm = Centimeters
<blank> = Inches

Length
Base Number

Example: PE3W03710-12 = 12 inches long cable
PE3W03710-100cm = 100 cm long cable

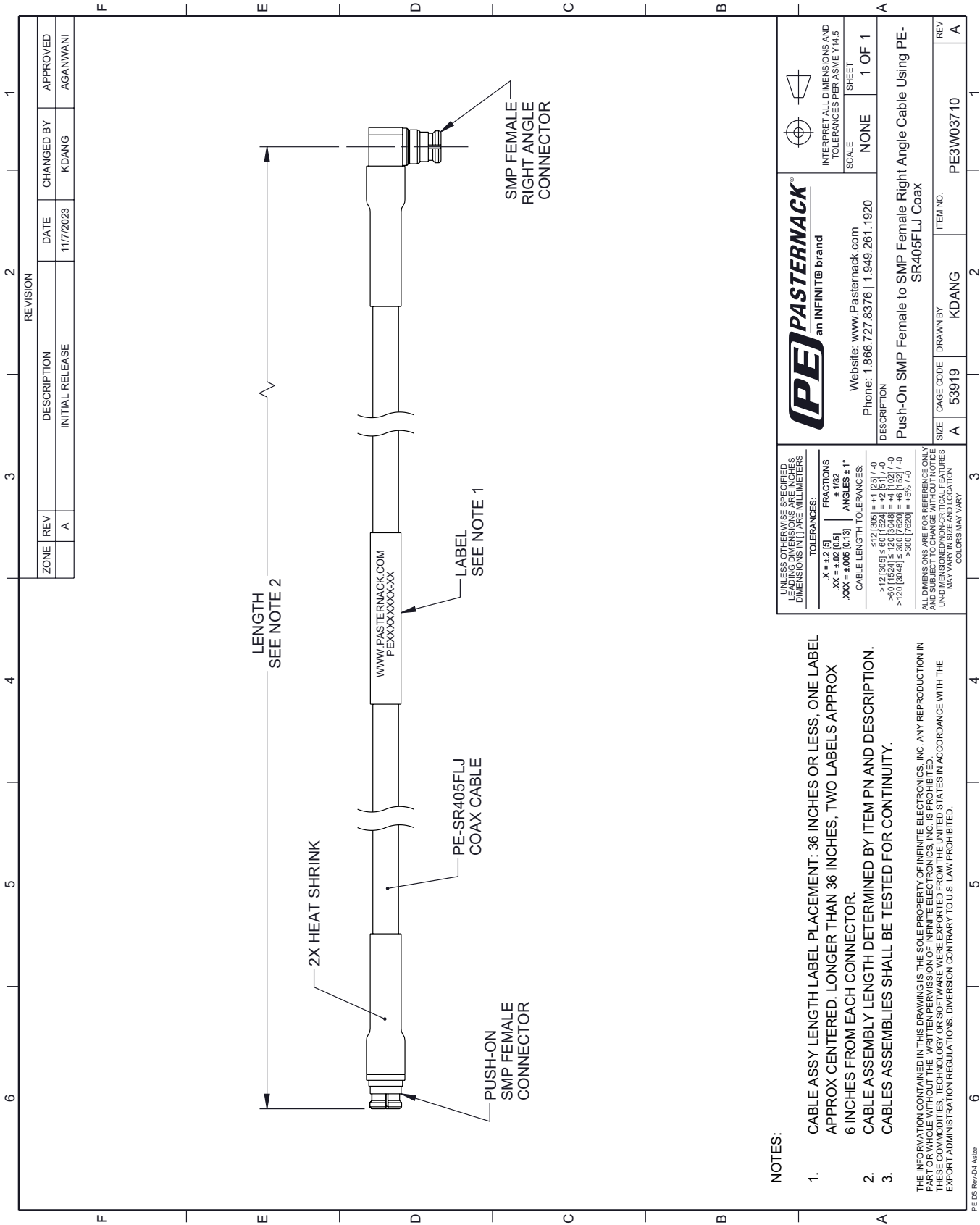
Push-On SMP Female to SMP Female Right Angle Cable Using PE-SR405FLJ Coax from Pasternack Enterprises has same day shipment for domestic and International orders. Our RF, microwave and millimeter wave products maintain a 99.4% availability and are part of the broadest selection in the industry.

Click the following link (or enter part number in "SEARCH" on website) to obtain additional part information including price, inventory and certifications: [Push-On SMP Female to SMP Female Right Angle Cable Using PE-SR405FLJ Coax PE3W03710](#)

URL: <https://www.pasternack.com/push-on-smp-female-to-smp-female-cable-using-pe-sr405flj-pe3w03710-p.aspx>

The information contained within this document is accurate to the best of our knowledge and representative of the part described herein. It may be necessary to make modifications to the part and/or the documentation of the part in order to implement improvements. Pasternack Enterprises reserves the right to make such changes as required. Unless otherwise stated, all specifications are nominal. Pasternack Enterprises does not make any representation or warranty regarding the suitability of the part described herein for any particular purpose, and Pasternack Enterprises does not assume liability arising out of the use of any part or document.

PE3W03710 CAD Drawing
Push-On SMP Female to SMP Female Right Angle Cable Using PE-SR405FLJ Coax



UNLESS OTHERWISE SPECIFIED, LEADING DIMENSIONS ARE IN INCHES, DIMENSIONS IN [] ARE MILLIMETERS		PE PASTERNAK an INFINITE brand		INTERPRET ALL DIMENSIONS AND TOLERANCES PER ASME Y14.5	
TOLERANCES:		FRACTIONS		SCALE	
.X = ±.2 [5]		± 1/32		NONE	
.XX = ±.02 [0.5]		ANGLES ± 1°		SHEET	
.XXX = ±.005 [0.13]		CABLE LENGTH TOLERANCES:		1 OF 1	
		<12 [305] = ±1 [25] / -0			
		>12 [305] ≤ 60 [1524] = ±2 [51] / -0			
		>60 [1524] ≤ 120 [3048] = ±4 [102] / -0			
		>120 [3048] = ±5% [12.5] / -0			
		>300 [7620] = ±5% [12.5] / -0			
ALL DIMENSIONS ARE FOR REFERENCE ONLY. UNLESS OTHERWISE SPECIFIED, DIMENSIONS ARE IN INCHES. UNLESS OTHERWISE SPECIFIED, DIMENSIONS ARE IN MILLIMETERS. DIMENSIONS MAY VARY.		DESCRIPTION			
		Push-On SMP Female to SMP Female Right Angle Cable Using PE-SR405FLJ Coax			
		SIZE	CAGE CODE	DRAWN BY	ITEM NO.
		A	53919	KDANG	PE3W03710
		REV			
		A			

- NOTES:
- CABLE ASSY LENGTH LABEL PLACEMENT: 36 INCHES OR LESS, ONE LABEL APPROX CENTERED. LONGER THAN 36 INCHES, TWO LABELS APPROX 6 INCHES FROM EACH CONNECTOR.
 - CABLE ASSEMBLY LENGTH DETERMINED BY ITEM PN AND DESCRIPTION.
 - CABLES ASSEMBLIES SHALL BE TESTED FOR CONTINUITY.
- THE INFORMATION CONTAINED IN THIS DRAWING IS THE SOLE PROPERTY OF INFINITE ELECTRONICS, INC. ANY REPRODUCTION IN PART OR WHOLE WITHOUT THE WRITTEN PERMISSION OF INFINITE ELECTRONICS, INC. IS PROHIBITED. THESE COMMODITIES, TECHNOLOGY OR SOFTWARE WERE EXPORTED FROM THE UNITED STATES IN ACCORDANCE WITH THE EXPORT ADMINISTRATION REGULATIONS. DIVERSION CONTRARY TO U.S. LAW PROHIBITED.