



## SMA Male to Mini SMP Female Cable 48 Inch Length Using PE-SR405FLJ Coax with HeatShrink

### RF Cable Assemblies Technical Data Sheet

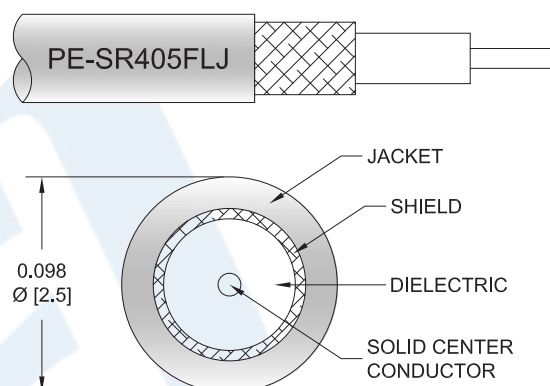
PE3W04210/HS-48

#### Configuration

- Connector 1: SMA Male
- Connector 2: Mini SMP Female
- Cable Type: PE-SR405FLJ

#### Features

- Max Frequency 18 GHz
- Shielding Effectivity > 100 dB
- 69.5% Phase Velocity
- FEP Jacket



#### Applications

- General Purpose
- Laboratory Use

#### Description

Pasternack's PE3W04210/HS-48 SMA male to Mini SMP female 48 inch cable using PE-SR405FLJ coax is part of our full line of RF components available for same-day shipping. Pasternack's formable RF cable assemblies provide an alternative to costly pre-formed semi-rigid assemblies since they are hand formable. This Pasternack SMA to Mini SMP cable assembly has a male to female gender configuration with 50 ohm formable PE-SR405FLJ coax. The PE3W04210/HS-48 SMA male to Mini SMP female cable assembly operates to 18 GHz.

Custom versions of most RF cable assemblies can be built and shipped same day. Custom cable assembly lengths can be obtained by specifying the desired length on the web site at time of order or by contacting a sales representative. Other available RF cable assembly value added services include connector orientation or clocking, heat shrink booting and custom labeling. RF testing can also be performed to document the electrical performance of your cable assembly.

Click the following link (or enter part number in "SEARCH" on website) to obtain additional part information including price, inventory and certifications: [SMA Male to Mini SMP Female Cable 48 Inch Length Using PE-SR405FLJ Coax with Heat-Shrink PE3W04210/HS-48](#)



## SMA Male to Mini SMP Female Cable 48 Inch Length Using PE-SR405FLJ Coax with HeatShrink

### RF Cable Assemblies Technical Data Sheet

PE3W04210/HS-48

#### Electrical Specifications

| Description                   | Minimum | Typical       | Maximum | Units                 |
|-------------------------------|---------|---------------|---------|-----------------------|
| Frequency Range               | DC      |               | 18      | GHz                   |
| VSWR                          |         |               | 1.5:1   |                       |
| Velocity of Propagation       |         | 69.5          |         | %                     |
| RF Shielding                  | 100     |               |         | dB                    |
| Group Delay                   |         | 1.43 [4.69]   |         | ns/ft [ns/m]          |
| Capacitance                   |         | 29 [95.14]    |         | pF/ft [pF/m]          |
| DC Resistance Inner Conductor |         | 65.7 [215.55] |         | Ohms/1000ft [Ohms/Km] |
| DC Resistance Outer Conductor |         | 10.2 [33.46]  |         | Ohms/1000ft [Ohms/Km] |

#### Specifications by Frequency

| Description           | F1  | F2   | F3   | F4   | F5   | Units |
|-----------------------|-----|------|------|------|------|-------|
| Frequency             | 1   | 2    | 4.5  | 9    | 18   | GHz   |
| Insertion Loss (Max.) | 1.1 | 1.31 | 1.82 | 2.74 | 4.56 | dB    |

#### Electrical Specification Notes:

The Insertion Loss data above is based on the performance specifications of the coax use in this assembly. The Insertion Loss includes an estimated insertion loss of 0.2dB of connector Loss

#### Mechanical Specifications

##### Cable Assembly

|          |                   |
|----------|-------------------|
| Length*  | 48 in [121.92 cm] |
| Diameter | 0.315 in [8 mm]   |

##### Cable

|                                      |                               |
|--------------------------------------|-------------------------------|
| Cable Type                           | PE-SR405FLJ                   |
| Impedance                            | 50 Ohms                       |
| Inner Conductor Type                 | Solid                         |
| Inner Conductor Material and Plating | Copper Clad Steel, Silver     |
| Dielectric Type                      | PTFE                          |
| Number of Shields                    | 1                             |
| Outer Conductor Material and Plating | Tinned Copper Composite Braid |
| Jacket Material                      | FEP, Black                    |
| Jacket Diameter                      | 0.105 in [2.67 mm]            |

Click the following link (or enter part number in "SEARCH" on website) to obtain additional part information including price, inventory and certifications: [SMA Male to Mini SMP Female Cable 48 Inch Length Using PE-SR405FLJ Coax with Heat-Shrink PE3W04210/HS-48](#)



## SMA Male to Mini SMP Female Cable 48 Inch Length Using PE-SR405FLJ Coax with HeatShrink

### RF Cable Assemblies Technical Data Sheet

PE3W04210/HS-48

|                              |                     |
|------------------------------|---------------------|
| One Time Minimum Bend Radius | 0.5 in [12.7 mm]    |
| Repeated Minimum Bend Radius | 0.787 in [19.99 mm] |

#### Connectors

| Description                        | Connector 1        | Connector 2            |
|------------------------------------|--------------------|------------------------|
| Type                               | SMA Male           | Mini SMP Female        |
| Specification                      | MIL-STD-348A       |                        |
| Impedance                          | 50 Ohms            | 50 Ohms                |
| Contact Material and Plating       | Brass, Gold        | Beryllium Copper, Gold |
| Contact Plating Specification      | 50µ in. minimum    | MIL-G-45204            |
| Dielectric Type                    | Teflon             | PTFE                   |
| Body Material and Plating          | Brass, Gold        | Beryllium Copper, Gold |
| Body Plating Specification         | 3µ in. minimum     | MIL-G-45204            |
| Coupling Nut Material and Plating  | Brass, Gold        |                        |
| Coupling Nut Plating Specification | 3µ in. minimum     |                        |
| Hex Size                           | 5/16 Inch          |                        |
| Torque                             | 3 in-lbs [0.34 Nm] |                        |

#### Mechanical Specification Notes:

\*All cable assemblies have a length tolerance of 1.5% or  $\pm 3/8"$ , whichever is greater.

#### Environmental Specifications

##### Temperature

Operating Range -55 to +125 deg C

#### Compliance Certifications (see [product page](#) for current document)

#### Plotted and Other Data

Notes:

Click the following link (or enter part number in "SEARCH" on website) to obtain additional part information including price, inventory and certifications: [SMA Male to Mini SMP Female Cable 48 Inch Length Using PE-SR405FLJ Coax with Heat-Shrink PE3W04210/HS-48](#)



## SMA Male to Mini SMP Female Cable 48 Inch Length Using PE-SR405FLJ Coax with HeatShrink

### RF Cable Assemblies Technical Data Sheet

PE3W04210/HS-48

#### How to Order

Part Number Configuration:

PE3W04210/HS

- xx

uu

Unit of Measure:  
cm = Centimeters  
<blank> = Inches  
Length  
Base Number

Example: PE3W04210/HS-12 = 12 inches long cable  
PE3W04210/HS-100cm = 100 cm long cable

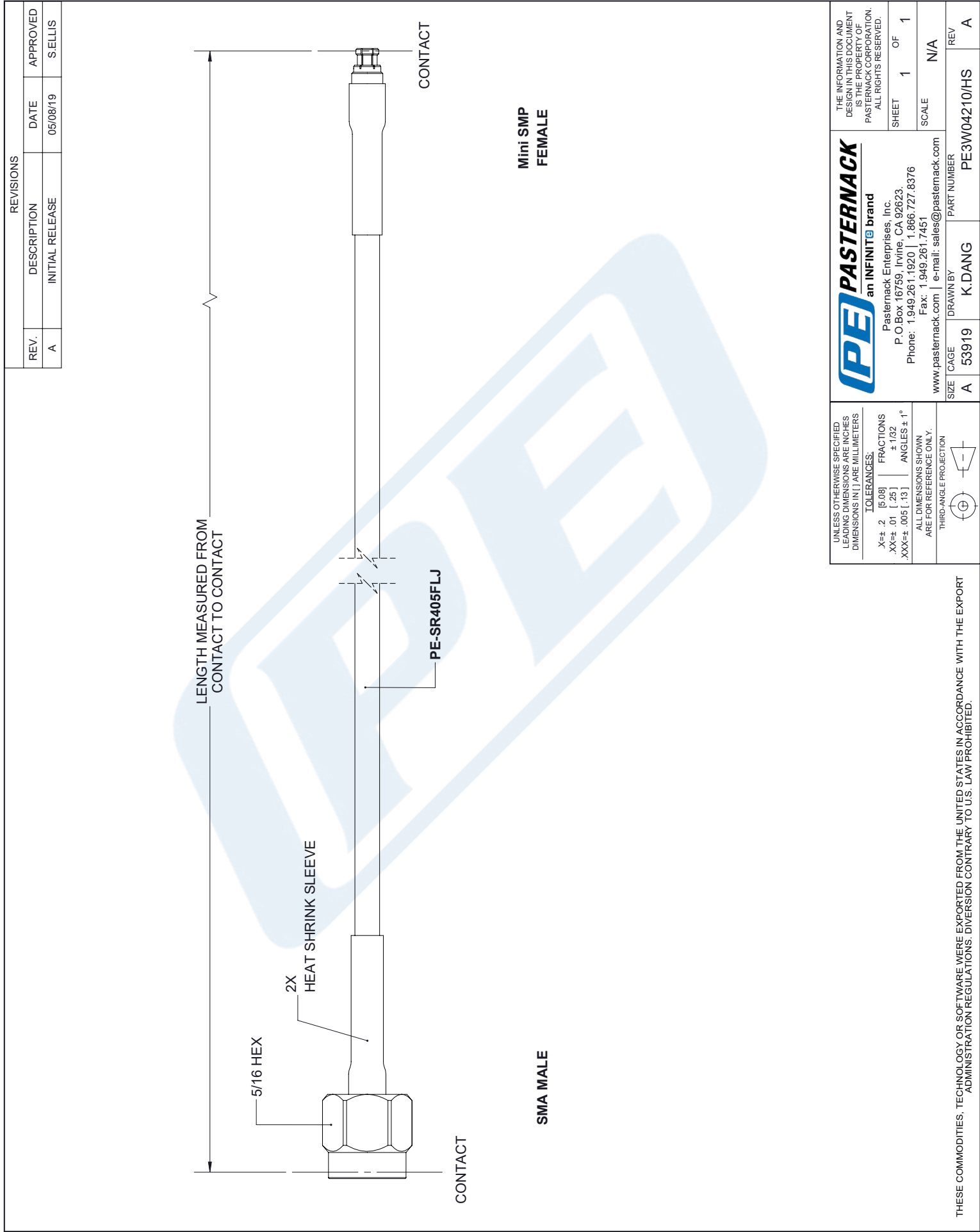
SMA Male to Mini SMP Female Cable 48 Inch Length Using PE-SR405FLJ Coax with HeatShrink from Pasternack Enterprises has same day shipment for domestic and International orders. Our RF, microwave and millimeter wave products maintain a 99.4% availability and are part of the broadest selection in the industry.

Click the following link (or enter part number in "SEARCH" on website) to obtain additional part information including price, inventory and certifications: [SMA Male to Mini SMP Female Cable 48 Inch Length Using PE-SR405FLJ Coax with HeatShrink PE3W04210/HS-48](https://www.pasternack.com/sma-male-mini-smp-female-pe-sr405flj-cable-assembly-pe3w04210-hs-48-p.aspx)

URL: <https://www.pasternack.com/sma-male-mini-smp-female-pe-sr405flj-cable-assembly-pe3w04210-hs-48-p.aspx>

The information contained in this document is accurate to the best of our knowledge and representative of the part described herein. It may be necessary to make modifications to the part and/or the documentation of the part, in order to implement improvements. Pasternack reserves the right to make such changes as required. Unless otherwise stated, all specifications are nominal. Pasternack does not make any representation or warranty regarding the suitability of the part described herein for any particular purpose, and Pasternack does not assume any liability arising out of the use of any part or documentation.

**PE3W04210/HS-48 CAD Drawing**  
SMA Male to Mini SMP Female Cable 48 Inch Length  
Using PE-SR405FLJ Coax with HeatShrink



|  |             |
|--|-------------|
| UNLESS OTHERWISE SPECIFIED<br>LEADING DIMENSIONS ARE INCHES<br>DIMENSIONS IN [ ] ARE MILLIMETERS |             |
| TOLERANCES:  | FRACTIONS   |
| X±.2 [5.08]  | ±.132       |
| .XX±.01 [.25]  | ±.132       |
| .XXX±.005 [.13]  | ANGLES ± 1° |
| ALL DIMENSIONS SHOWN<br>ARE FOR REFERENCE ONLY.  |             |
| THIRD-ANGLE PROJECTION   |             |
|  |             |

Pasternack Enterprises, Inc.  
P.O. Box 16759, Irvine, CA 92623.  
Phone: 1.949.261.1920 | 1.866.727.8376  
Fax: 1.949.261.7451  
www.pasternack.com | e-mail: sales@pasternack.com

|      |       |          |              |
|------|-------|----------|--------------|
| SIZE | CAGE  | DRAWN BY | PART NUMBER  |
| A    | 53919 | K.DANG   | PE3W04210/HS |

|  |        |
|--|--------|
| THE INFORMATION AND<br>DESIGN IN THIS DOCUMENT<br>IS THE PROPERTY OF<br>PASTERNAK CORPORATION.<br>ALL RIGHTS RESERVED. |        |
| SHEET  | 1 OF 1 |
| SCALE  | N/A    |