

Limited Detent SMP Male Bulkhead to SMP Female Right Angle Cable Using PE-SR405AL Coax



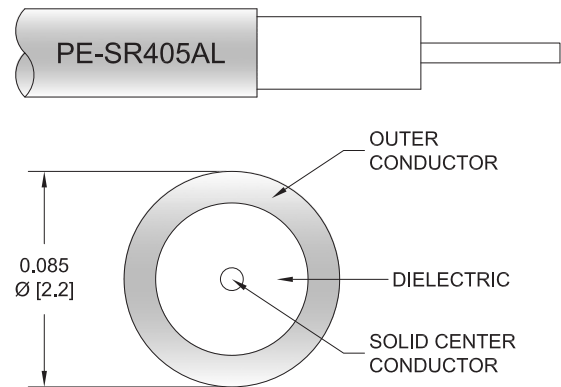
PE3W04308

Configuration

- Connector 1: Limited Detent SMP Male Bulkhead
- Connector 2: SMP Female Right Angle
- Cable Type: PE-SR405AL
- Coax Flex Type: Semi-Rigid

Features

- Max Frequency 28.5 GHz



Applications

- General Purpose
- Laboratory Use

Description

Pasternack's PE3W04308 SMP male limited detent bulkhead to SMP female right angle cable using PE-SR405AL coax is part of our full line of RF components available for same-day shipping. Pasternack's semi-rigid RF cable assemblies are ideal for high performance applications and can be formed, using proper tooling, to the routing pattern required. This Pasternack SMP to SMP cable assembly has a male to female gender configuration with 50 ohm semi-rigid PE-SR405AL coax. The PE3W04308 SMP male to SMP female cable assembly operates to 28.5 GHz. The right angle SMP interface on the PE-SR405AL cable allows for easier connections in tight spaces. Our RF cable assembly with SMP bulkhead interface allows designers to create external connections on their product enclosures, and can be used in a variety of other rack mount and panel mount applications.

Custom versions of most RF cable assemblies can be built and shipped same day. Custom cable assembly lengths can be obtained by specifying the desired length on the web site at time of order or by contacting a sales representative. Other available RF cable assembly value added services include connector orientation or clocking, heat shrink booting and custom labeling. RF testing can also be performed to document the electrical performance of your cable assembly.

Electrical Specifications

Description	Minimum	Typical	Maximum	Units
Frequency Range	DC		28.5	
VSWR			1.4:1	

Specifications by Frequency

Limited Detent SMP Male Bulkhead to SMP Female Right Angle Cable Using PE-SR405AL Coax



PE3W04308

Part Number	Length	Description	F1	F2	F3	F4	F5	Units	Weight (lbs)
		Frequency	1000	2000	4500	9000	20000	MHz	
PE3W04308	Custom Lengths Available	Insertion Loss (Typ.)	0.23	0.29	0.45	0.74	1.31	dB/ft	
			0.76	0.96	1.48	2.43	4.3	dB/m	
PE3W04308-6	6 inch	Insertion Loss (Typ.)	0.37	0.42	0.54	0.72	1.08	dB	0.014
PE3W04308-12	12 inch	Insertion Loss (Typ.)	0.48	0.57	0.76	1.09	1.74	dB	0.021
PE3W04308-18	18 inch	Insertion Loss (Typ.)	0.6	0.71	0.99	1.46	2.39	dB	0.029
PE3W04308-24	24 inch	Insertion Loss (Typ.)	0.71	0.86	1.21	1.83	3.05	dB	0.036
PE3W04308-36	36 inch	Insertion Loss (Typ.)	0.94	1.15	1.66	2.57	4.36	dB	0.05

The insertion loss data for the base model does not include loss due to the connectors. Each length includes insertion loss due to the connectors.

Loss due to Connector 1: 0.05 x sqrt(fGHz) dB

Loss due to Connector 2: 0.2 dB

Base Weight: 0.021 pounds

Additional Weight per Inch: 0.00117 pounds

Mechanical Specifications

Cable Assembly

Weight 0.021 lbs [9.53 g]

Cable

Cable Type	PE-SR405AL
Impedance	50 Ohms
Inner Conductor Type	Solid
Inner Conductor Material and Plating	Copper Clad Steel, Silver
Dielectric Type	PTFE
Number of Shields	1
Outer Conductor 1 Material and Plating	Tinned Aluminum
Repeated Minimum Bend Radius	0.05 in [1.27 mm]

Limited Detent SMP Male Bulkhead to SMP Female Right Angle Cable Using PE-SR405AL Coax



PE3W04308

Connectors

Description	Connector 1	Connector 2
Type	SMP Male Bulkhead	SMP Female Right Angle
Specification	MIL-STD-348A	DESC 94008
Impedance	50 Ohms	50 Ohms
Configuration	Straight	Right Angle
Connection Method	Limited Detent	
Mating Cycles	500	
Contact Material and Plating	Brass, Gold	Beryllium Copper, Gold
Contact Plating Specification		MIL-G-45204
Dielectric Type	PTFE	PTFE
Body Material and Plating	Brass, Gold	Beryllium Copper, Gold
Body Plating Specification		MIL-G-45204

Environmental Specifications

Compliance Certifications (see [product page](#) for current document)

Plotted and Other Data

Notes:

Limited Detent SMP Male Bulkhead to SMP Female Right Angle Cable Using PE-SR405AL Coax



PE3W04308

Typical Performance Data

How to Order

Part Number Configuration:

PE3W04308

- XX

uu

- Unit of Measure:
cm = Centimeters
<blank> = Inches

- Length

- Base Number

Example: PE3W04308-12 = 12 inches long cable
PE3W04308-100cm = 100 cm long cable

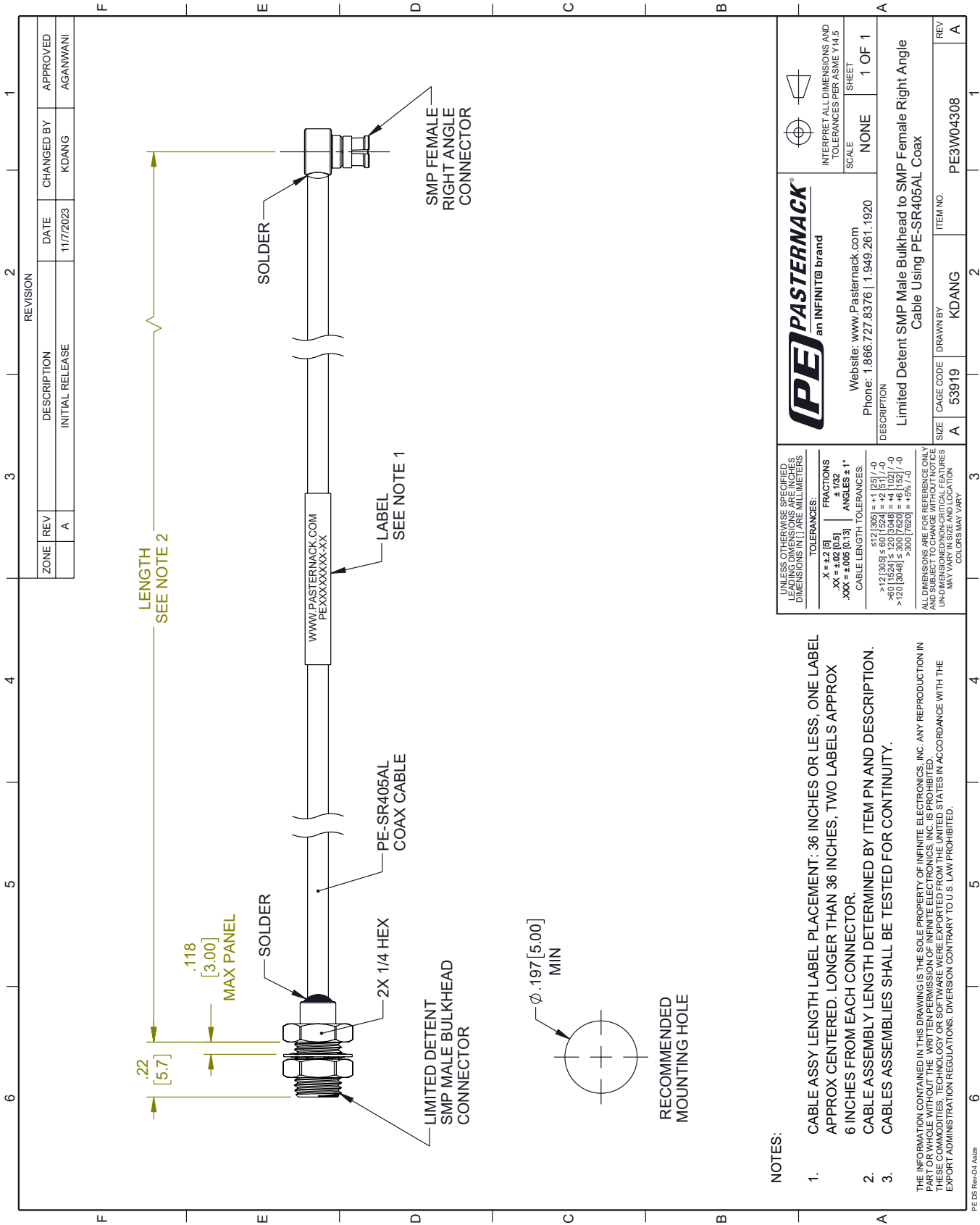
Limited Detent SMP Male Bulkhead to SMP Female Right Angle Cable Using PE-SR405AL Coax from Pasternack Enterprises has same day shipment for domestic and International orders. Our RF, microwave and millimeter wave products maintain a 99.4% availability and are part of the broadest selection in the industry.

Click the following link (or enter part number in "SEARCH" on website) to obtain additional part information including price, inventory and certifications: [Limited Detent SMP Male Bulkhead to SMP Female Right Angle Cable Using PE-SR405AL Coax PE3W04308](#)

URL: <https://www.pasternack.com/limited-detent-smp-male-bulkhead-to-smp-female-cable-using-pe-sr405al-pe3w04308-p.aspx>

The information contained within this document is accurate to the best of our knowledge and representative of the part described herein. It may be necessary to make modifications to the part and/or the documentation of the part in order to implement improvements. Pasternack Enterprises reserves the right to make such changes as required. Unless otherwise stated, all specifications are nominal. Pasternack Enterprises does not make any representation or warranty regarding the suitability of the part described herein for any particular purpose, and Pasternack Enterprises does not assume liability arising out of the use of any part or document.

PE3W04308 CAD Drawing
Limited Detent SMP Male Bulkhead to SMP Female Right Angle Cable Using PE-SR405AL Coax



NOTES:

- 1. CABLE ASSY LENGTH LABEL PLACEMENT: 36 INCHES OR LESS, ONE LABEL APPROX CENTERED. LONGER THAN 36 INCHES, TWO LABELS APPROX 6 INCHES FROM EACH CONNECTOR.
- 2. CABLE ASSEMBLY LENGTH DETERMINED BY ITEM PN AND DESCRIPTION.
- 3. CABLES ASSEMBLIES SHALL BE TESTED FOR CONTINUITY.

THE INFORMATION CONTAINED IN THIS DRAWING IS THE SOLE PROPERTY OF INFINITE ELECTRONICS, INC. ANY REPRODUCTION IN PART OR WHOLE WITHOUT THE WRITTEN PERMISSION OF INFINITE ELECTRONICS, INC. IS PROHIBITED. THESE COMMODITIES, TECHNOLOGY OR SOFTWARE WERE EXPORTED FROM THE UNITED STATES IN ACCORDANCE WITH THE EXPORT ADMINISTRATION REGULATIONS. DIVERSION CONTRARY TO U.S. LAW PROHIBITED.