

SMA Male to SSMC Plug Cable Using PE-SR405FLJ Coax with HeatShrink, LF Solder



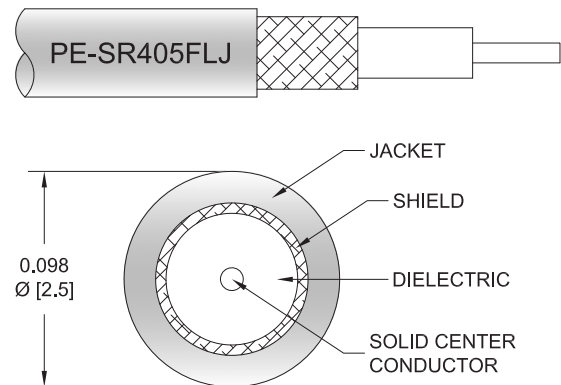
PE3W04384LF/HS

Configuration

- Connector 1: SMA Male
- Connector 2: SSMC Plug
- Cable Type: PE-SR405FLJ
- Coax Flex Type: Formable

Features

- Max Frequency 12.4 GHz
- Shielding Effectivity > 100 dB
- 69.5% Phase Velocity
- FEP Jacket
- 500 Mating Cycles



Applications

- General Purpose
- Laboratory Use

Description

Pasternack's PE3W04384LF/HS SMA male to SSMC plug cable using PE-SR405FLJ coax is part of our full line of RF components available for same-day shipping. Pasternack's formable RF cable assemblies provide an alternative to costly pre-formed semi-rigid assemblies since they are hand formable. This Pasternack SMA to SSMC cable assembly has a male to plug gender configuration with 50 ohm formable PE-SR405FLJ coax. The PE3W04384LF/HS SMA male to SSMC plug cable assembly operates to 12.4 GHz.

Custom versions of most RF cable assemblies can be built and shipped same day. Custom cable assembly lengths can be obtained by specifying the desired length on the web site at time of order or by contacting a sales representative. Other available RF cable assembly value added services include connector orientation or clocking, heat shrink booting and custom labeling. RF testing can also be performed to document the electrical performance of your cable assembly.

Electrical Specifications

Description	Minimum	Typical	Maximum	Units
Frequency Range	DC		12.4	GHz
VSWR			1.4:1	
Velocity of Propagation		69.5		%
RF Shielding	100			dB
Group Delay		1.43 [4.69]		ns/ft [ns/m]
Capacitance		29 [95.14]		pF/ft [pF/m]
DC Resistance Inner Conductor		65.7 [215.55]		Ohms/1000ft [Ohms/Km]
DC Resistance Outer Conductor		10.2 [33.46]		Ohms/1000ft [Ohms/Km]
Operating Voltage (AC)			250	Vrms

Specifications by Frequency

SMA Male to SSMC Plug Cable Using PE-SR405FLJ Coax with HeatShrink, LF Solder



PE3W04384LF/HS

Part Number	Length	Description	F1	F2	F3	F4	F5	Units	Weight (lbs)
			Frequency	500	1000	2500	5000	12400	
PE3W04384LF/HS	Custom Lengths Available	Insertion Loss (Typ.)	0.15	0.225	0.347	0.549	0.902	dB/ft	
			0.5	0.74	1.14	1.81	2.96	dB/m	
PE3W04384LF/HS-6	6 In	Insertion Loss (Typ.)	0.48	0.52	0.58	0.68	0.86	dB	0.026
PE3W04384LF/HS-9	9 In	Insertion Loss (Typ.)	0.52	0.57	0.67	0.82	1.08	dB	0.03
PE3W04384LF/HS-12	12 In	Insertion Loss (Typ.)	0.55	0.63	0.75	0.95	1.31	dB	0.033
PE3W04384LF/HS-18	18 In	Insertion Loss (Typ.)	0.63	0.74	0.93	1.23	1.76	dB	0.041
PE3W04384LF/HS-24	24 In	Insertion Loss (Typ.)	0.7	0.85	1.1	1.5	2.21	dB	0.048

The insertion loss data for the base model does not include loss due to the connectors. Each length includes insertion loss due to the connectors.

Loss due to Connector 1:	0.1 dB
Loss due to Connector 2:	0.3 dB
Base Weight:	0.033 pounds
Additional Weight per Inch:	0.00117 pounds

Mechanical Specifications

Cable Assembly

Width/Diameter	0.5 in [12.7 mm]
Weight	0.019 lbs [8.62 g]

Cable

Cable Type	PE-SR405FLJ
Impedance	50 Ohms
Inner Conductor Type	Solid
Inner Conductor Material and Plating	Copper Clad Steel, Silver
Dielectric Type	PTFE
Number of Shields	1
Outer Conductor 1 Material and Plating	Tinned Copper Composite Braid
Jacket Material	FEP, Black
Jacket Diameter	0.105 in [2.67 mm]
One Time Minimum Bend Radius	0.5 in [12.7 mm]
Repeated Minimum Bend Radius	0.787 in [19.99 mm]

SMA Male to SSMC Plug Cable Using PE-SR405FLJ Coax with HeatShrink, LF Solder



PE3W04384LF/HS

Connectors

Description	Connector 1	Connector 2
Type	SMA Male	SSMC Plug
Specification	MIL-STD-348A	
Impedance	50 Ohms	50 Ohms
Configuration	Straight	Straight
Mating Cycles	500	500
Contact Material and Plating	Brass, Gold	Beryllium Copper, Gold
Contact Plating Specification	50 µin minimum	MIL-G-45204
Dielectric Type	PTFE	Teflon
Body Material and Plating	Stainless Steel, Gold	Beryllium Copper, Gold
Body Plating Specification	10 µin minimum	MIL-G-45204
Coupling Nut Material and Plating	Brass, Nickel	Beryllium Copper, Gold
Coupling Nut Plating Specification	100 µin minimum	MIL-G-45204
Hex Size	5/16 inch	
Torque	3 in-lbs 0.34 Nm	1.75 in-lbs 0.2 Nm

Environmental Specifications

Operating Range Temperature -55 to +125 deg C

Compliance Certifications (see [product page](#) for current document)

Plotted and Other Data

Notes:

SMA Male to SSMC Plug Cable Using PE-SR405FLJ Coax with HeatShrink, LF Solder



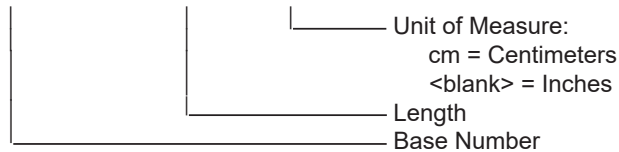
PE3W04384LF/HS

Typical Performance Data

How to Order

Part Number Configuration:

PE3W04384LF/HS - xx uu



Example: PE3W04384LF/HS-12 = 12 inches long cable
PE3W04384LF/HS-100cm = 100 cm long cable

SMA Male to SSMC Plug Cable Using PE-SR405FLJ Coax with HeatShrink, LF Solder from Pasternack Enterprises has same day shipment for domestic and International orders. Our RF, microwave and millimeter wave products maintain a 99.4% availability and are part of the broadest selection in the industry.

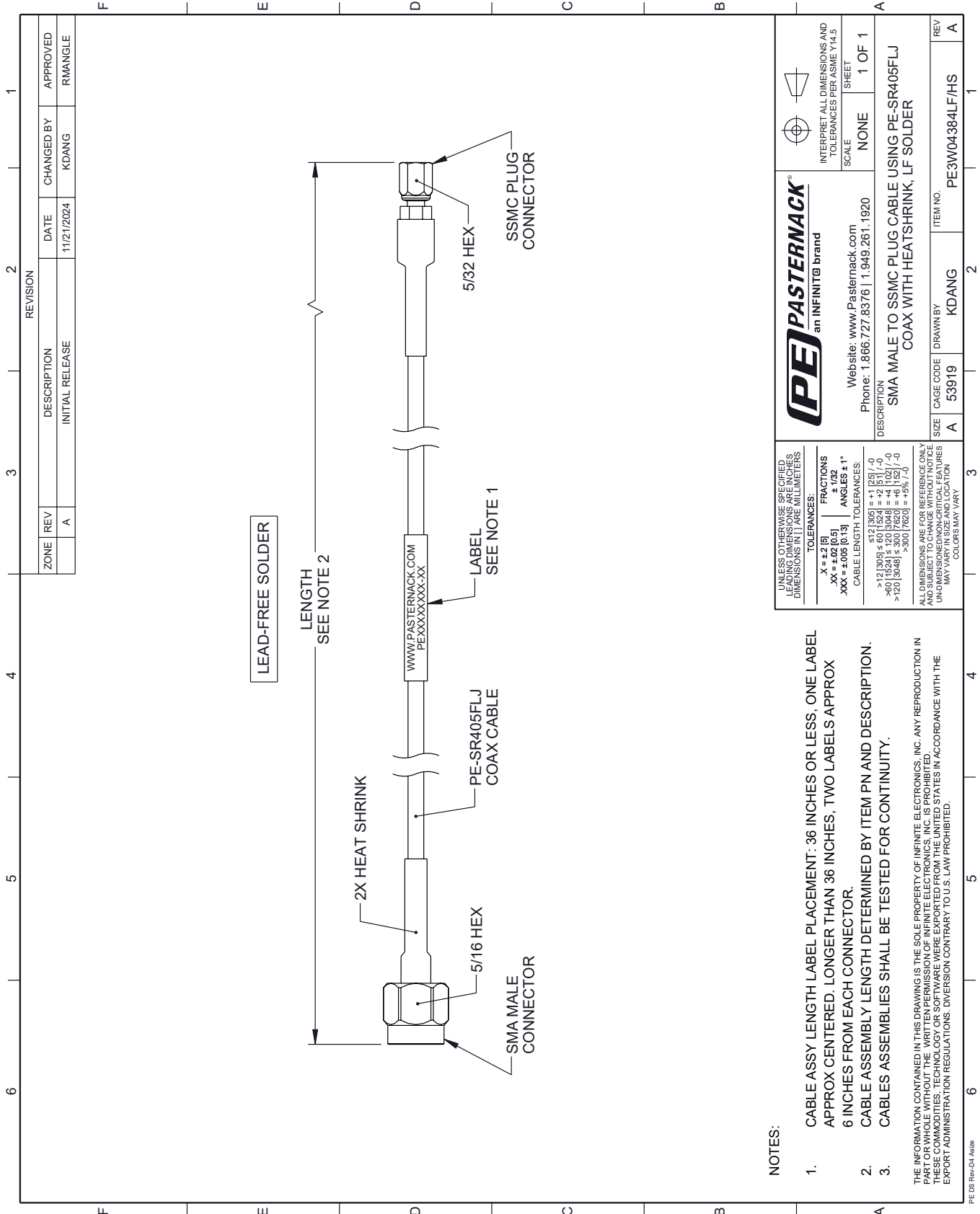
Click the following link (or enter part number in "SEARCH" on website) to obtain additional part information including price, inventory and certifications: [SMA Male to SSMC Plug Cable Using PE-SR405FLJ Coax with HeatShrink, LF Solder PE3W04384LF/HS](#)

URL: <https://www.pasternack.com/sma-male-to-ssmc-plug-cable-using-pe-sr405flj-with-heatshrink-lf-solder-pe3w04384lf-hs-p.aspx>

The information contained within this document is accurate to the best of our knowledge and representative of the part described herein. It may be necessary to make modifications to the part and/or the documentation of the part in order to implement improvements. Pasternack Enterprises reserves the right to make such changes as required. Unless otherwise stated, all specifications are nominal. Pasternack Enterprises does not make any representation or warranty regarding the suitability of the part described herein for any particular purpose, and Pasternack Enterprises does not assume liability arising out of the use of any part or document.

PE3W04384LF/HS CAD Drawing

SMA Male to SSMC Plug Cable Using PE-SR405FLJ Coax with HeatShrink, LF Solder



REVISION		DATE	CHANGED BY	APPROVED
ZONE	REV			
	A	11/21/2024	KDANG	RMANGLE
DESCRIPTION				
INITIAL RELEASE				

PE PASTERNAK
an INFINITE brand

Website: www.Pasternack.com
Phone: 1.866.727.8376 | 1.949.261.1920

DESCRIPTION
SMA MALE TO SSMC PLUG CABLE USING PE-SR405FLJ
COAX WITH HEATSHRINK, LF SOLDER

SCALE: NONE
SHEET: 1 OF 1

INTERPRET ALL DIMENSIONS AND TOLERANCES PER ASME Y14.5

SIZE	A	CAGE CODE	53919	DRAWN BY	KDANG	ITEM NO.	PE3W04384LF/HS	REV	A
------	---	-----------	-------	----------	-------	----------	----------------	-----	---

UNLESS OTHERWISE SPECIFIED, LEADING DIMENSIONS ARE IN INCHES, UNLESS INDICATED OTHERWISE. DIMENSIONS IN [] ARE MILLIMETERS.

TOLERANCES:
 .X = ±.2 [5]
 .XX = ±.02 [0.5]
 .XXX = ±.005 [0.13]

FRACTIONS
 ± 1/32
 ANGLES ± 1°

CABLE LENGTH TOLERANCES:
 <12 [305] ±.60 [1524] = ±.2 [51] / -0
 >12 [305] ±.60 [1524] = ±.2 [51] / -0
 >40 [1024] ±.120 [3048] = ±.4 [1027] / -0
 >120 [3048] ±.300 [7620] = ±.9 [229] / -0

ALL DIMENSIONS ARE FOR REFERENCE ONLY. UNDIMENSIONED NON-CRITICAL FEATURES MAY VARY IN SIZE AND LOCATION. COLORS MAY VARY.

- NOTES:**
- CABLE ASSY LENGTH LABEL PLACEMENT: .36 INCHES OR LESS, ONE LABEL APPROX CENTERED. LONGER THAN .36 INCHES, TWO LABELS APPROX .6 INCHES FROM EACH CONNECTOR.
 - CABLE ASSEMBLY LENGTH DETERMINED BY ITEM PN AND DESCRIPTION.
 - CABLE ASSEMBLIES SHALL BE TESTED FOR CONTINUITY.
- THE INFORMATION CONTAINED IN THIS DRAWING IS THE SOLE PROPERTY OF INFINITE ELECTRONICS, INC. ANY REPRODUCTION IN PART OR WHOLE WITHOUT THE WRITTEN PERMISSION OF INFINITE ELECTRONICS, INC. IS PROHIBITED. THESE COMMODITIES, TECHNOLOGY OR SOFTWARE WERE EXPORTED FROM THE UNITED STATES IN ACCORDANCE WITH THE EXPORT ADMINISTRATION REGULATIONS. DIVERSION CONTRARY TO U.S. LAW PROHIBITED.