

SMA Male Right Angle to Push-On SMP Female Right Angle
Cable 24 Inch Length Using RG316 Coax with 180 Deg. Clock



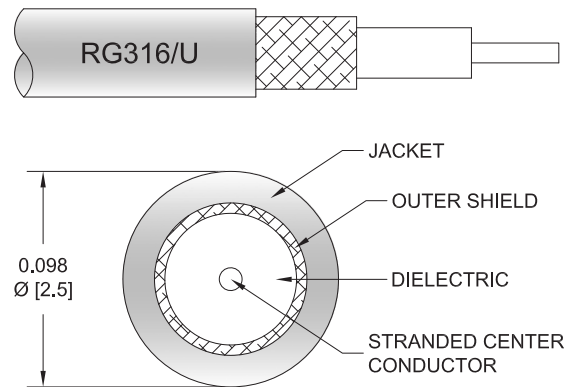
PE3W05056/SP-24

Configuration

- Connector 1: SMA Male Right Angle
- Connector 2: Push-On SMP Female Right Angle
- Cable Type: RG316
- Coax Flex Type: Flexible

Features

- Max Frequency 3 GHz
- 69% Phase Velocity
- FEP Jacket



Applications

- General Purpose
- Laboratory Use

Description

Pasternack's PE3W05056/SP-24 SMA male right angle to SMP female push-on right angle 24 inch cable using RG316 coax is part of our full line of RF components available for same-day shipping. Pasternack's flexible RF cable assemblies are ideal for applications where tight bends and flexure are required. This Pasternack SMA to SMP cable assembly has a male to female gender configuration with 50 ohm flexible RG316 coax. The PE3W05056/SP-24 SMA male to SMP female cable assembly operates to 3 GHz. The right angle SMA and right angle SMP interfaces on the RG316 cable allow for easier connections in tight spaces.

Custom versions of most RF cable assemblies can be built and shipped same day. Custom cable assembly lengths can be obtained by specifying the desired length on the web site at time of order or by contacting a sales representative. Other available RF cable assembly value added services include connector orientation or clocking, heat shrink booting and custom labeling. RF testing can also be performed to document the electrical performance of your cable assembly.

Electrical Specifications

Description	Minimum	Typical	Maximum	Units
Frequency Range	DC		3	GHz
VSWR			1.4:1	
Velocity of Propagation		69		%
Capacitance		29.4 [96.46]		pF/ft [pF/m]
Operating Voltage (AC)			335	Vrms
Jacket Spark			2,000	Vrms

Specifications by Frequency

SMA Male Right Angle to Push-On SMP Female Right Angle
Cable 24 Inch Length Using RG316 Coax with 180 Deg. Clock



PE3W05056/SP-24

Part Number	Length	Description	F1	F2	F3	F4	F5	Units	Weight (lbs)
			Frequency		100	250	500	1000	
PE3W05056/SP	Custom Lengths Available	Insertion Loss (Typ.)	0.11	0.16	0.24	0.38	0.58	dB/ft	
			0.37	0.53	0.79	1.25	1.91	dB/m	
PE3W05056/SP-12	12 inch	Insertion Loss (Typ.)	0.51	0.56	0.64	0.78	0.98	dB	0.034
PE3W05056/SP-24	24 inch	Insertion Loss (Typ.)	0.62	0.72	0.88	1.16	1.56	dB	0.045
PE3W05056/SP-36	36 inch	Insertion Loss (Typ.)	0.73	0.88	1.12	1.54	2.14	dB	0.055
PE3W05056/SP-48	48 inch	Insertion Loss (Typ.)	0.84	1.04	1.36	1.92	2.72	dB	0.065
PE3W05056/SP-72	72 inch	Insertion Loss (Typ.)	1.06	1.36	1.83	2.68	3.88	dB	0.085

The insertion loss data for the base model does not include loss due to the connectors. Each length includes insertion loss due to the connectors.

Loss due to Connector 1:	0.2 dB
Loss due to Connector 2:	0.2 dB
Base Weight:	0.034 pounds
Additional Weight per Inch:	0.00084 pounds

Mechanical Specifications

Cable Assembly

Length	24 in [609.6 mm]
Width/Diameter	0.5 in [12.7 mm]
Weight	0.045 lbs [20.41 g]

Cable

Cable Type	RG316
Impedance	50 Ohms
Inner Conductor Type	Stranded
Inner Conductor Material and Plating	Copper Clad Steel, Silver
Dielectric Type	PTFE
Number of Shields	1
Shield Layer 1	Silver Plated Copper Braid
Jacket Material	FEP, Tan
Jacket Diameter	0.102 in [2.59 mm]

SMA Male Right Angle to Push-On SMP Female Right Angle
Cable 24 Inch Length Using RG316 Coax with 180 Deg. Clock



PE3W05056/SP-24

Connectors

Description	Connector 1	Connector 2
Type	SMA Male Right Angle	SMP Female Right Angle
Specification	MIL-STD-348A	MIL-STD-348A
Impedance	50 Ohms	50 Ohms
Configuration	Right Angle	Right Angle
Connection Method		Push-On
Contact Material and Plating	Brass, Gold	Beryllium Copper, Gold
Contact Plating Specification	50 μin minimum	30μ in. minimum
Dielectric Type	PTFE	Teflon
Outer Conductor Material and Plating		Beryllium Copper, Gold
Outer Conductor Plating Specification		3μ in. minimum
Body Material and Plating	Brass, Nickel	Brass, Gold
Body Plating Specification	100 μin minimum	3μ in. minimum
Coupling Nut Material and Plating	Brass, Nickel	
Coupling Nut Plating Specification	100 μin minimum	
Hex Size	5/16 inch	
Torque	3 in-lbs 0.34 Nm	

Environmental Specifications

Operating Range Temperature -55 to +165 deg C

Compliance Certifications (see [product page](#) for current document)

Plotted and Other Data

Notes:

SMA Male Right Angle to Push-On SMP Female Right Angle Cable 24 Inch Length Using RG316 Coax with 180 Deg. Clock



PE3W05056/SP-24

Typical Performance Data

How to Order

Part Number Configuration:

PE3W05056/SP

- **xx**

uu

Unit of Measure:

cm = Centimeters

<blank> = Inches

Length

Base Number

Example: PE3W05056/SP-12 = 12 inches long cable
PE3W05056/SP-100cm = 100 cm long cable

SMA Male Right Angle to Push-On SMP Female Right Angle Cable 24 Inch Length Using RG316 Coax with 180 Deg. Clock from Pasternack Enterprises has same day shipment for domestic and International orders. Our RF, microwave and millimeter wave products maintain a 99.4% availability and are part of the broadest selection in the industry.

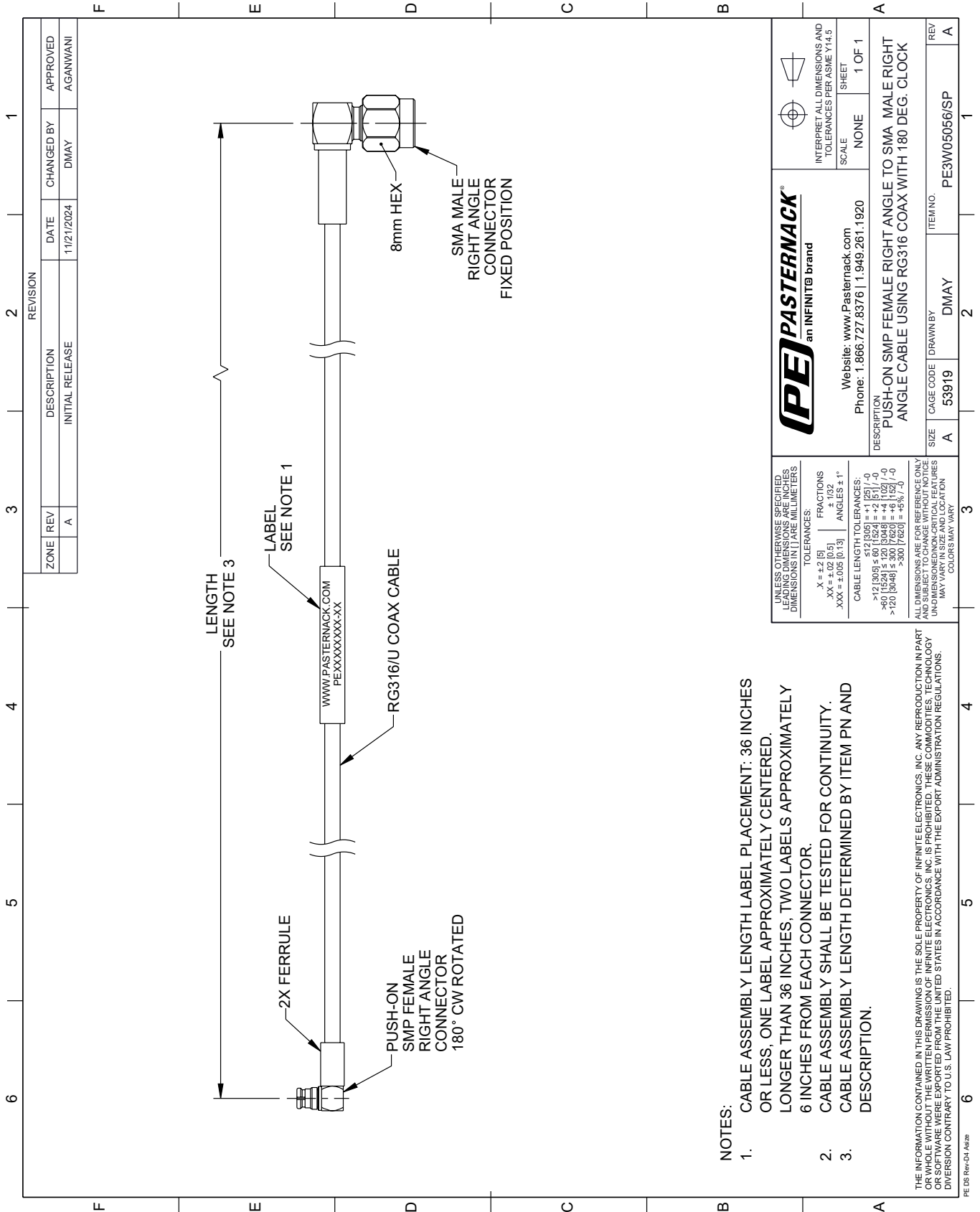
Click the following link (or enter part number in "SEARCH" on website) to obtain additional part information including price, inventory and certifications: [SMA Male Right Angle to Push-On SMP Female Right Angle Cable 24 Inch Length Using RG316 Coax with 180 Deg. Clock PE3W05056/SP-24](https://www.pasternack.com/sma-male-right-angle-to-push-on-smp-female-right-angle-cable-24-inch-length-using-rg316-coax-with-180-deg-clock-pe3w05056-sp-24)

URL: <https://www.pasternack.com/sma-male-right-angle-to-push-on-smp-female-cable-24-inch-length-using-rg316-with-180-deg.-clock-pe3w05056-sp-24-p.aspx>

The information contained within this document is accurate to the best of our knowledge and representative of the part described herein. It may be necessary to make modifications to the part and/or the documentation of the part in order to implement improvements. Pasternack Enterprises reserves the right to make such changes as required. Unless otherwise stated, all specifications are nominal. Pasternack Enterprises does not make any representation or warranty regarding the suitability of the part described herein for any particular purpose, and Pasternack Enterprises does not assume liability arising out of the use of any part or document.

PE3W05056/SP-24 CAD Drawing

SMA Male Right Angle to Push-On SMP Female Right Angle Cable
24 Inch Length Using RG316 Coax with 180 Deg. Clock



NOTES:

- CABLE ASSEMBLY LENGTH LABEL PLACEMENT: 36 INCHES OR LESS, ONE LABEL APPROXIMATELY CENTERED. LONGER THAN 36 INCHES, TWO LABELS APPROXIMATELY 6 INCHES FROM EACH CONNECTOR.
- CABLE ASSEMBLY SHALL BE TESTED FOR CONTINUITY.
- CABLE ASSEMBLY LENGTH DETERMINED BY ITEM PN AND DESCRIPTION.

THE INFORMATION CONTAINED IN THIS DRAWING IS THE SOLE PROPERTY OF INFINITE ELECTRONICS, INC. ANY REPRODUCTION IN PART OR WHOLE WITHOUT THE WRITTEN PERMISSION OF INFINITE ELECTRONICS, INC. IS PROHIBITED. THESE COMMODITIES, TECHNOLOGY OR SOFTWARE ARE EXPORTED FROM THE UNITED STATES IN ACCORDANCE WITH THE EXPORT ADMINISTRATION REGULATIONS. DIVERSION CONTRARY TO U.S. LAW PROHIBITED.

		INTERPRET ALL DIMENSIONS AND TOLERANCES PER ASME Y14.5	
Website: www.Pastermack.com Phone: 1.866.727.8376 1.949.281.1920		SCALE	NONE
DESCRIPTION PUSH-ON SMP FEMALE RIGHT ANGLE TO SMA MALE RIGHT ANGLE CABLE USING RG316 COAX WITH 180 DEG. CLOCK		SHEET	1 OF 1
SIZE	A	CAGE CODE	DMAY
ITEM NO.	PE3W05056/SP	REV	A

UNLESS OTHERWISE SPECIFIED, LEADING DIMENSIONS ARE IN INCHES. DIMENSIONS IN [] ARE MILLIMETERS.

TOLERANCES:
 .X = ±.2 [5]
 .XX = ±.02 [0.5]
 .XXX = ±.005 [0.13]

FRACTIONS
 ± 1/32

ANGLES ± 1°

CABLE LENGTH TOLERANCES:
 <12 [305] ≤ 60 [1524] = ±1 [25] / -0
 >60 [1524] ≤ 120 [3048] = ±4 [102] / -0
 >120 [3048] ≤ 300 [7620] = ±5% / -0

ALL DIMENSIONS ARE FOR REFERENCE ONLY. UNLESS OTHERWISE SPECIFIED, DIMENSIONS MAY VARY IN SIZE AND LOCATION. COLORS MAY VARY.