



Push-On SMP Female Right Angle to SMA Female Bulkhead Low Loss Cable Using PE-C100-LSZH Coax

RF Cable Assemblies Technical Data Sheet

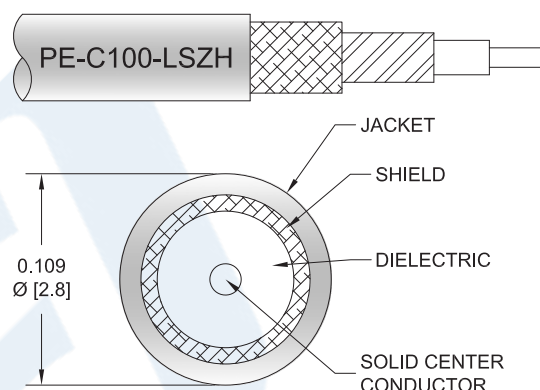
PE3W07332

Configuration

- Connector 1: Push-OnSMP Female Right Angle
- Connector 2: SMA Female Bulkhead
- Cable Type: PE-C100-LSZH

Features

- Shielding Effectivity > 90 dB
- 66% Phase Velocity
- Double Shielded
- LSZH Jacket



Applications

- General Purpose
- Laboratory Use

Description

Pasternack's PE3W07332 SMP female push-on right angle to SMA female bulkhead cable using PE-C100-LSZH coax is part of our full line of RF components available for same-day shipping. Pasternack's flexible RF cable assemblies are ideal for applications where tight bends and flexure are required. This Pasternack SMP to SMA cable assembly has a female to female gender configuration with 50 ohm flexible PE-C100-LSZH coax. The right angle SMP interface on the PE-C100-LSZH cable allows for easier connections in tight spaces. Our RF cable assembly with SMA bulkhead interface allows designers to create external connections on their product enclosures, and can be used in a variety of other rack mount and panel mount applications. The double shielding of this Pasternack cable assembly provides excellent shielding effectiveness of better than 90 dB.

Custom versions of most RF cable assemblies can be built and shipped same day. Custom cable assembly lengths can be obtained by specifying the desired length on the web site at time of order or by contacting a sales representative. Other available RF cable assembly value added services include connector orientation or clocking, heat shrink booting and custom labeling. RF testing can also be performed to document the electrical performance of your cable assembly.

Click the following link (or enter part number in "SEARCH" on website) to obtain additional part information including price, inventory and certifications: [Push-On SMP Female Right Angle to SMA Female Bulkhead Low Loss Cable Using PE-C100-LSZH Coax PE3W07332](#)



Push-On SMP Female Right Angle to SMA Female
Bulkhead Low Loss Cable Using PE-C100-LSZH Coax

RF Cable Assemblies Technical Data Sheet

PE3W07332

Electrical Specifications

Description	Minimum	Typical	Maximum	Units
Velocity of Propagation		66		%
RF Shielding	90			dB
Group Delay		1.62 [5.31]		ns/ft [ns/m]
Capacitance		30.8 [101.05]		pF/ft [pF/m]
Inductance		0.077 [0.25]		uH/ft [uH/m]
DC Resistance Inner Conductor		81 [265.75]		Ω/1000ft [Ω/Km]
DC Resistance Outer Conductor		9.5 [31.17]		Ω/1000ft [Ω/Km]
Jacket Spark			2,000	Vrms

Mechanical Specifications

Cable Assembly

Weight 0.026 lbs [11.79 g]

Cable

Cable Type PE-C100-LSZH
 Impedance 50 Ohms
 Inner Conductor Type Solid
 Inner Conductor Material and Plating Copper Clad Steel
 Dielectric Type PE
 Number of Shields 2
 Shield Layer 1 Aluminum Tape
 Shield Layer 2 Tinned Copper Braid
 Jacket Material LSZH, Black
 Jacket Diameter 0.109 in [2.77 mm]

 One Time Minimum Bend Radius 0.25 in [6.35 mm]
 Repeated Minimum Bend Radius 1 in [25.4 mm]
 Bending Moment 0.1 lbs-ft [0.14 N-m]
 Flat Plate Crush 10 lbs/in [0.18 Kg/mm]
 Tensile Strength 15 lbs [6.8 Kg]

Click the following link (or enter part number in "SEARCH" on website) to obtain additional part information including price, inventory and certifications: [Push-On SMP Female Right Angle to SMA Female Bulkhead Low Loss Cable Using PE-C100-LSZH Coax PE3W07332](#)



Push-On SMP Female Right Angle to SMA Female
Bulkhead Low Loss Cable Using PE-C100-LSZH Coax

RF Cable Assemblies Technical Data Sheet

PE3W07332

Connectors

Description	Connector 1	Connector 2
Type	SMP Female Right Angle	SMA Female Bulkhead
Specification	MIL-STD-348A	MIL-STD-348
Impedance	50 Ohms	50 Ohms
Connection Method	Push-On	
Contact Material and Plating	Beryllium Copper, Gold	Beryllium Copper, Gold
Contact Plating Specification	30μ in. minimum	MIL-G-45204
Dielectric Type	Teflon	
Outer Conductor Material and Plating	Beryllium Copper, Gold	Brass, Nickel
Outer Conductor Plating Specification	3μ in. minimum	
Body Material and Plating	Brass, Gold	Brass, Nickel
Body Plating Specification	3μ in. minimum	

Environmental Specifications

Temperature

Operating Range

-40 to +85 deg C

Compliance Certifications (see [product page](#) for current document)

Plotted and Other Data

Notes:

Click the following link (or enter part number in "SEARCH" on website) to obtain additional part information including price, inventory and certifications: [Push-On SMP Female Right Angle to SMA Female Bulkhead Low Loss Cable Using PE-C100-LSZH Coax PE3W07332](#)



Push-On SMP Female Right Angle to SMA Female
Bulkhead Low Loss Cable Using PE-C100-LSZH Coax

RF Cable Assemblies Technical Data Sheet

PE3W07332

How to Order

Part Number Configuration:

PE3W07332

- **xx**

uu

Unit of Measure:
cm = Centimeters
<blank> = Inches
Length
Base Number

Example: PE3W07332-12 = 12 inches long cable
PE3W07332-100cm = 100 cm long cable

Push-On SMP Female Right Angle to SMA Female Bulkhead Low Loss Cable Using PE-C100-LSZH Coax from Pasternack Enterprises has same day shipment for domestic and International orders. Our RF, microwave and millimeter wave products maintain a 99.4% availability and are part of the broadest selection in the industry.

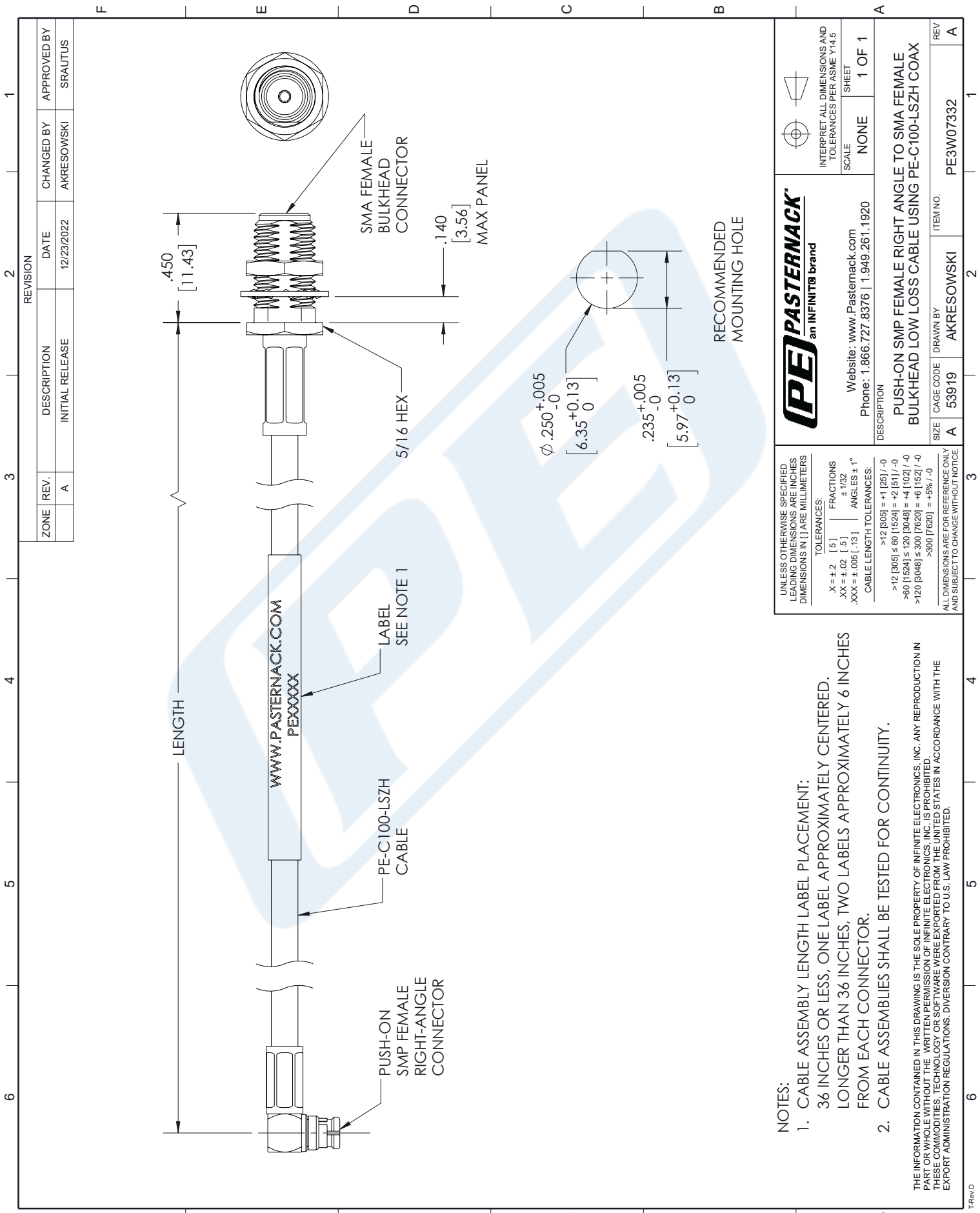
Click the following link (or enter part number in "SEARCH" on website) to obtain additional part information including price, inventory and certifications: [Push-On SMP Female Right Angle to SMA Female Bulkhead Low Loss Cable Using PE-C100-LSZH Coax PE3W07332](https://www.pasternack.com/push-on-smp-female-right-angle-to-sma-female-bulkhead-low-loss-cable-using-pe-c100-lszh-pe3w07332-p.aspx)

URL: <https://www.pasternack.com/push-on-smp-female-right-angle-to-sma-female-bulkhead-low-loss-cable-using-pe-c100-lszh-pe3w07332-p.aspx>

The information contained in this document is accurate to the best of our knowledge and representative of the part described herein. It may be necessary to make modifications to the part and/or the documentation of the part, in order to implement improvements. Pasternack reserves the right to make such changes as required. Unless otherwise stated, all specifications are nominal. Pasternack does not make any representation or warranty regarding the suitability of the part described herein for any particular purpose, and Pasternack does not assume any liability arising out of the use of any part or documentation.

PE3W07332 CAD Drawing



Push-On SMP Female Right Angle to SMA Female Bulkhead
Low Loss Cable Using PE-C100-LSZH Coax



NOTES:

1. CABLE ASSEMBLY LENGTH LABEL PLACEMENT:
36 INCHES OR LESS, ONE LABEL APPROXIMATELY CENTERED.
LONGER THAN 36 INCHES, TWO LABELS APPROXIMATELY 6 INCHES FROM EACH CONNECTOR.
2. CABLE ASSEMBLIES SHALL BE TESTED FOR CONTINUITY.

THE INFORMATION CONTAINED IN THIS DRAWING IS THE SOLE PROPERTY OF INFINITE ELECTRONICS, INC. ANY REPRODUCTION IN PART OR WHOLE WITHOUT THE WRITTEN PERMISSION OF INFINITE ELECTRONICS, INC. IS PROHIBITED. THESE COMMODITIES, TECHNOLOGY OR SOFTWARE WERE EXPORTED FROM THE UNITED STATES IN ACCORDANCE WITH THE EXPORT ADMINISTRATION REGULATIONS. DIVERSION CONTRARY TO U.S. LAW PROHIBITED.

UNLESS OTHERWISE SPECIFIED LEADING DIMENSIONS ARE INCHES DIMENSIONS IN [] ARE MILLIMETERS		 		INTERPRET ALL DIMENSIONS AND TOLERANCES PER ASME Y14.5	
				SCALE	SHEET
TOLERANCES:		Website: www.Pasternack.com		NONE	1 OF 1
X = ± .2 [.5] FRACTIONS XX = ± .02 [.5] 1/32 .XXX = ± .005 [.13] ANGLES ± 1°		Phone: 1.866.727.8376 1.949.261.1920			
CABLE LENGTH TOLERANCES:		DESCRIPTION			
		PUSH-ON SMP FEMALE RIGHT ANGLE TO SMA FEMALE BULKHEAD LOW LOSS CABLE USING PE-C100-LSZH COAX			
		SIZE	CAGE CODE	DRAWN BY	ITEM NO.
		A	53919	AKRESOWSKI	PE3W07332
		ALL DIMENSIONS ARE FOR REFERENCE ONLY AND SUBJECT TO CHANGE WITHOUT NOTICE			REV