

SMA Male to Limited Detent SMP Male Bulkhead Cable Using Tinned RG405 Coax

RF Cable Assemblies Technical Data Sheet

PE3W07783

Configuration

- Connector 1: SMA Male
- Connector 2: Limited Detent SMP Male Bulkhead
- Cable Type: RG405 Tinned

Features

- Max Frequency 18 GHz
- 500 Mating Cycles

Applications

- General Purpose
- Laboratory Use

Description

Pasternack's PE3W07783 SMA male to SMP male limited detent bulkhead cable using tinned RG405 coax is part of our full line of RF components available for same-day shipping. Pasternack's semi-rigid RF cable assemblies are ideal for high performance applications and can be formed, using proper tooling, to the routing pattern required. This Pasternack SMA to SMP cable assembly has a male to male gender configuration with 50 ohm semi-rigid RG405 tinned coax. The PE3W07783 SMA male to SMP male cable assembly operates to 18 GHz. Our RF cable assembly with SMP bulkhead interface allows designers to create external connections on their product enclosures, and can be used in a variety of other rack mount and panel mount applications.

Custom versions of most RF cable assemblies can be built and shipped same day. Custom cable assembly lengths can be obtained by specifying the desired length on the web site at time of order or by contacting a sales representative. Other available RF cable assembly value added services include connector orientation or clocking, heat shrink booting and custom labeling. RF testing can also be performed to document the electrical performance of your cable assembly.

Electrical Specifications

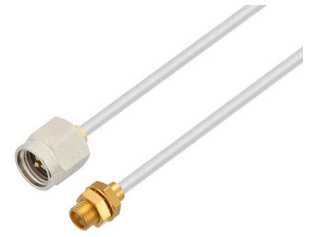
Description	Minimum	Typical	Maximum	Units
Frequency Range	DC		18	GHz
VSWR			1.4:1	

Specifications by Frequency

Description	F1	F2	F3	F4	F5	Units
Frequency	1	2	4.5	9	18	GHz
Insertion Loss (Typ.)	0.22	0.284	0.445	0.735	1.12	dB/ft
	0.72	0.93	1.46	2.41	3.67	

Electrical Specification Notes:

Click the following link (or enter part number in "SEARCH" on website) to obtain additional part information including price, inventory and certifications: [SMA Male to Limited Detent SMP Male Bulkhead Cable Using Tinned RG405 Coax PE3W07783](#)



SMA Male to Limited Detent SMP Male Bulkhead
Cable Using Tinned RG405 Coax

RF Cable Assemblies Technical Data Sheet

PE3W07783

Insertion Loss does not include the loss of the connectors. Insertion Loss is estimated as 0.1 dB per connector.

Mechanical Specifications

Cable Assembly

Weight 0.03 lbs [13.61 g]

Cable

Cable Type RG405 Tinned
 Impedance 50 Ohms
 Inner Conductor Type Solid
 Inner Conductor Material and Plating Copper Clad Steel, Silver
 Dielectric Type PTFE
 Number of Shields 1
 Shield Layer 1 Tinned Copper

One Time Minimum Bend Radius 0.05 in [1.27 mm]

Connectors

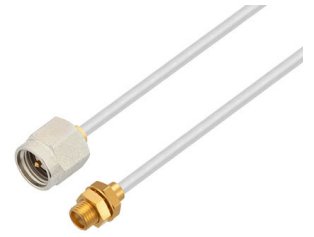
Description	Connector 1	Connector 2
Type	SMA Male	SMP Male Bulkhead
Specification	MIL-STD-348A	MIL-STD-348A
Impedance	50 Ohms	50 Ohms
Connection Method		Limited Detent
Mating Cycles	500	500
Contact Material and Plating	Brass, Gold	Brass, Gold
Contact Plating Specification	50 µin minimum	
Dielectric Type	PTFE	PTFE
Body Material and Plating	Stainless Steel, Gold	Brass, Gold
Body Plating Specification	10 µin minimum	
Coupling Nut Material and Plating	Brass, Nickel	
Coupling Nut Plating Specification	100 µin minimum	
Hex Size	5/16 inch	
Torque	3 in-lbs [0.34 Nm]	

Environmental Specifications

Temperature

Operating Range -55 to +125 deg C

Click the following link (or enter part number in "SEARCH" on website) to obtain additional part information including price, inventory and certifications: [SMA Male to Limited Detent SMP Male Bulkhead Cable Using Tinned RG405 Coax PE3W07783](#)



SMA Male to Limited Detent SMP Male Bulkhead
Cable Using Tinned RG405 Coax

RF Cable Assemblies Technical Data Sheet

PE3W07783

Compliance Certifications (see [product page](#) for current document)

Plotted and Other Data

Notes:

How to Order

Part Number Configuration:

PE3W07783 - xx uu

Unit of Measure:
cm = Centimeters
<blank> = Inches
Length
Base Number

Example: PE3W07783-12 = 12 inches long cable
PE3W07783-100cm = 100 cm long cable

SMA Male to Limited Detent SMP Male Bulkhead Cable Using Tinned RG405 Coax from Pasternack Enterprises has same day shipment for domestic and International orders. Our RF, microwave and millimeter wave products maintain a 99.4% availability and are part of the broadest selection in the industry.

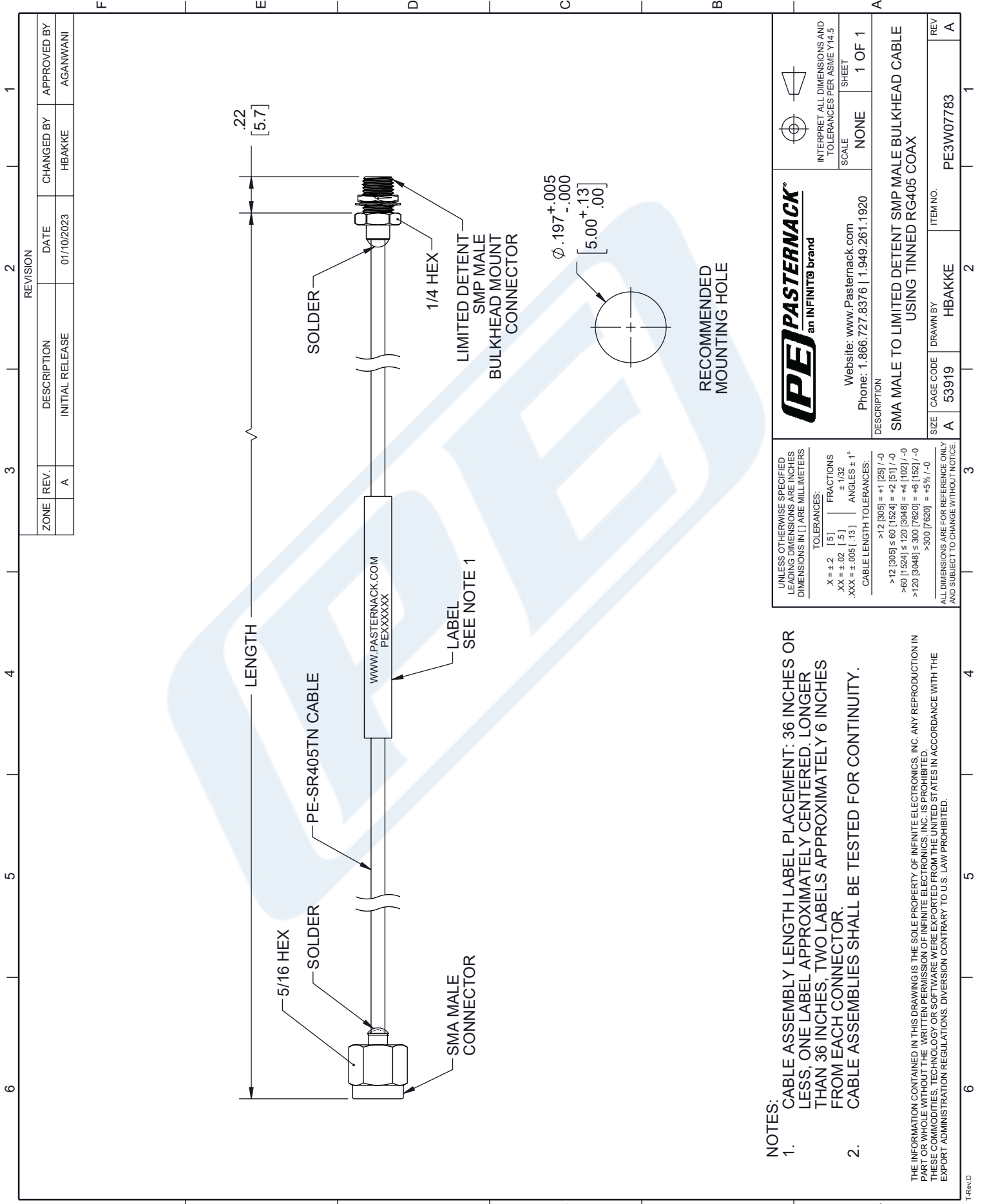
Click the following link (or enter part number in "SEARCH" on website) to obtain additional part information including price, inventory and certifications: [SMA Male to Limited Detent SMP Male Bulkhead Cable Using Tinned RG405 Coax PE3W07783](#)

URL: <https://www.pasternack.com/sma-male-to-limited-detent-smp-male-bulkhead-cable-using-tinned-rg405-pe3w07783-p.aspx>

The information contained in this document is accurate to the best of our knowledge and representative of the part described herein. It may be necessary to make modifications to the part and/or the documentation of the part, in order to implement improvements. Pasternack reserves the right to make such changes as required. Unless otherwise stated, all specifications are nominal. Pasternack does not make any representation or warranty regarding the suitability of the part described herein for any particular purpose, and Pasternack does not assume any liability arising out of the use of any part or documentation.

PE3W07783 CAD Drawing

SMA Male to Limited Detent SMP Male Bulkhead Cable Using Tinned RG405 Coax



- NOTES:**
- CABLE ASSEMBLY LENGTH LABEL PLACEMENT: 36 INCHES OR LESS, ONE LABEL APPROXIMATELY CENTERED. LONGER THAN 36 INCHES, TWO LABELS APPROXIMATELY 6 INCHES FROM EACH CONNECTOR.
 - CABLE ASSEMBLIES SHALL BE TESTED FOR CONTINUITY.

THE INFORMATION CONTAINED IN THIS DRAWING IS THE SOLE PROPERTY OF INFINITE ELECTRONICS, INC. ANY REPRODUCTION IN PART OR WHOLE WITHOUT THE WRITTEN PERMISSION OF INFINITE ELECTRONICS, INC. IS PROHIBITED. THESE COMMODITIES, TECHNOLOGY OR SOFTWARE WERE EXPORTED FROM THE UNITED STATES IN ACCORDANCE WITH THE EXPORT ADMINISTRATION REGULATIONS. DIVERSION CONTRARY TO U.S. LAW PROHIBITED.

UNLESS OTHERWISE SPECIFIED LEADING DIMENSIONS ARE INCHES DIMENSIONS IN [] ARE MILLIMETERS	
TOLERANCES:	FRACTIONS
X = ±.2 [5]	± 1/32
XX = ±.02 [.5]	ANGLES ± 1°
.XXX = ±.005 [.13]	
CABLE LENGTH TOLERANCES:	
>12 [305]	±.1 [25] / -0
>60 [1524]	±.2 [5] / -0
>120 [3048]	±.4 [102] / -0
>240 [6096]	±.8 [203] / -0
>300 [7620]	±.9 [229] / -0
ALL DIMENSIONS ARE FOR REFERENCE ONLY AND SUBJECT TO CHANGE WITHOUT NOTICE	

 PASTERNAK an INFINITE brand	Website: www.Pasternack.com Phone: 1.866.727.8376 1.949.261.1920	INTERPRET ALL DIMENSIONS AND TOLERANCES PER ASME Y14.5 SCALE: NONE SHEET: 1 OF 1
	DESCRIPTION SMA MALE TO LIMITED DETENT SMP MALE BULKHEAD CABLE USING TINNED RG405 COAX	SIZE: A CAGE CODE: 53919 DRAWN BY: HBAKKE ITEM NO.: PE3W07783