

Push-On SMP Female Right Angle to Reverse Polarity SMA Plug Right Angle Cable Using RG316 Coax with 180 Deg. Clock



PE3W07833/SP

Configuration

- Connector 1: Push-On SMP Female Right Angle
- Connector 2: SMA Plug Reverse Polarity Right Angle
- Cable Type: RG316
- Coax Flex Type: Flexible

Features

- 69% Phase Velocity
- FEP Jacket



Applications

- General Purpose
- Laboratory Use

Description

Pasternack's PE3W07833/SP SMP female push-on right angle to reverse polarity SMA plug right angle cable using RG316 coax is part of our full line of RF components available for same-day shipping. Pasternack's flexible RF cable assemblies are ideal for applications where tight bends and flexure are required. This Pasternack SMP to reverse polarity SMA cable assembly has a female to plug gender configuration with 50 ohm flexible RG316 coax. The right angle SMP and right angle SMA interfaces on the RG316 cable allow for easier connections in tight spaces.

Custom versions of most RF cable assemblies can be built and shipped same day. Custom cable assembly lengths can be obtained by specifying the desired length on the web site at time of order or by contacting a sales representative. Other available RF cable assembly value added services include connector orientation or clocking, heat shrink booting and custom labeling. RF testing can also be performed to document the electrical performance of your cable assembly.

Electrical Specifications

Description	Minimum	Typical	Maximum	Units
Velocity of Propagation		69		%
Jacket Spark			2,000	Vrms

Mechanical Specifications

Cable Assembly

Width/Diameter	0.5 in [12.7 mm]
Weight	0.29 lbs [131.54 g]

Cable

Cable Type	RG316
Impedance	50 Ohms
Inner Conductor Type	Stranded
Inner Conductor Material and Plating	Copper Clad Steel, Silver

Push-On SMP Female Right Angle to
Reverse Polarity SMA Plug Right Angle Cable Using
RG316 Coax with 180 Deg. Clock



PE3W07833/SP

Dielectric Type	PTFE
Number of Shields	1
Shield Layer 1	Silver Plated Copper Braid
Jacket Material	FEP, Tan
Jacket Diameter	0.102 in [2.59 mm]

Connectors

Description	Connector 1	Connector 2
Type	SMP Female Right Angle	SMA Plug Reverse Polarity Right Angle
Specification	MIL-STD-348A	MIL-STD-348
Impedance	50 Ohms	50 Ohms
Configuration	Right Angle	Right Angle
Connection Method	Push-On	
Contact Material and Plating	Beryllium Copper, Gold	Gold
Contact Plating Specification	30µ in. minimum	MIL-G-45204
Dielectric Type	Teflon	PTFE
Outer Conductor Material and Plating	Beryllium Copper, Gold	
Outer Conductor Plating Specification	3µ in. minimum	
Body Material and Plating	Brass, Gold	Brass, Nickel
Body Plating Specification	3µ in. minimum	QQ-N-290
Coupling Nut Material and Plating		Brass, Nickel
Coupling Nut Plating Specification		QQ-N-290
Hex Size		5/16 inch
Torque		3 in-lbs 0.34 Nm

Environmental Specifications

Compliance Certifications (see [product page](#) for current document)

Plotted and Other Data

Notes:

Push-On SMP Female Right Angle to Reverse Polarity SMA Plug Right Angle Cable Using RG316 Coax with 180 Deg. Clock



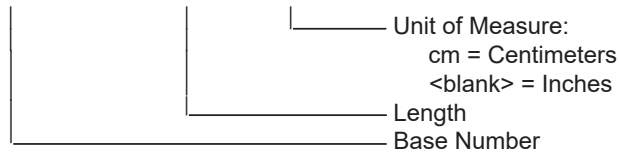
PE3W07833/SP

Typical Performance Data

How to Order

Part Number Configuration:

PE3W07833/SP - xx uu



Example: PE3W07833/SP-12 = 12 inches long cable
PE3W07833/SP-100cm = 100 cm long cable

Push-On SMP Female Right Angle to Reverse Polarity SMA Plug Right Angle Cable Using RG316 Coax with 180 Deg. Clock from Pasternack Enterprises has same day shipment for domestic and International orders. Our RF, microwave and millimeter wave products maintain a 99.4% availability and are part of the broadest selection in the industry.

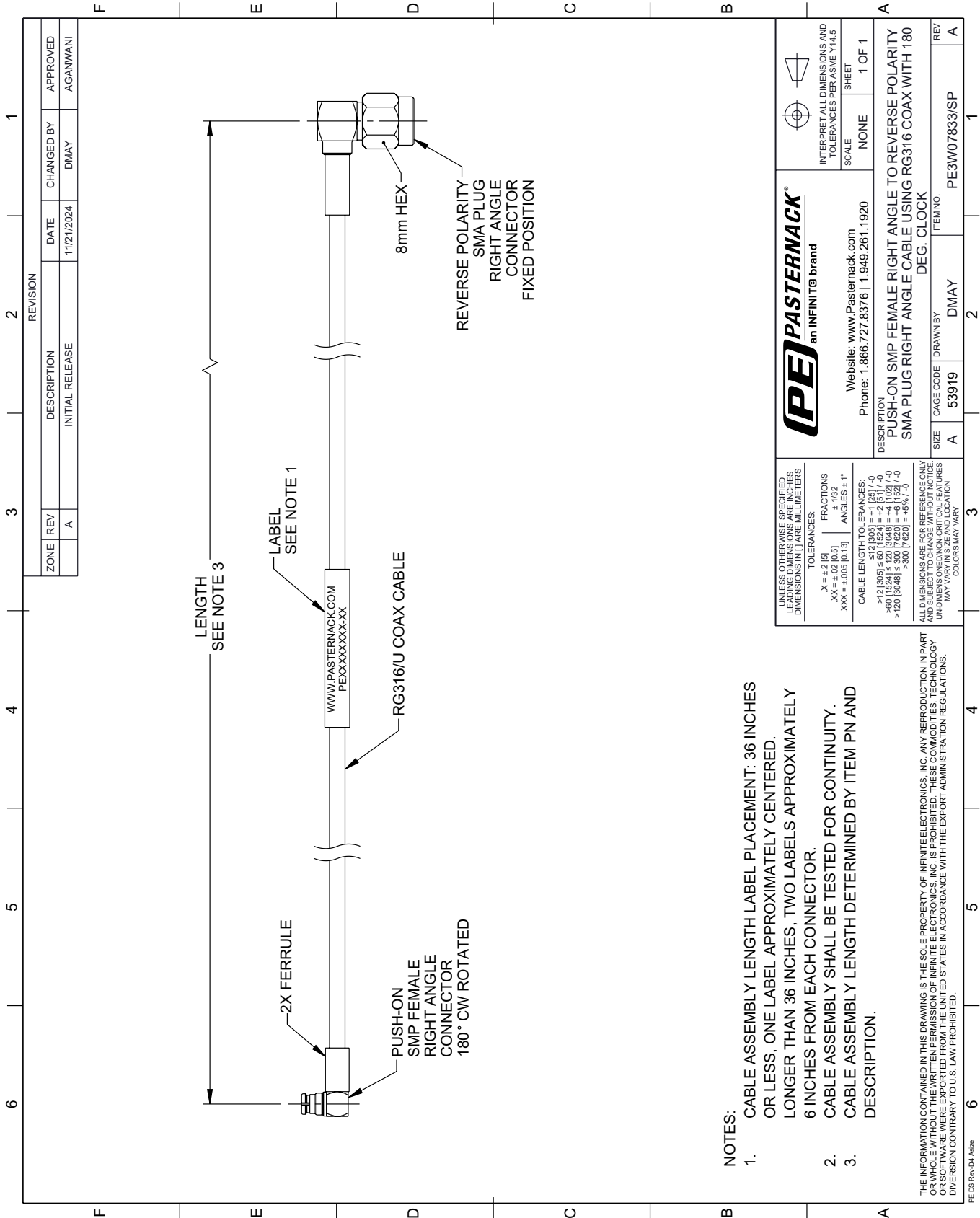
Click the following link (or enter part number in "SEARCH" on website) to obtain additional part information including price, inventory and certifications: [Push-On SMP Female Right Angle to Reverse Polarity SMA Plug Right Angle Cable Using RG316 Coax with 180 Deg. Clock PE3W07833/SP](#)

URL: <https://www.pasternack.com/push-on-smp-female-right-angle-to-reverse-polarity-sma-plug-cable-using-rg316-with-180-deg.-clock-pe3w07833-sp-p.aspx>

The information contained within this document is accurate to the best of our knowledge and representative of the part described herein. It may be necessary to make modifications to the part and/or the documentation of the part in order to impliment improvements. Pasternack Enterprises reserves the right to make such changes as required. Unless otherwise stated, all specifications are nominal. Pasternack Enterprises does not make any representation or warranty regarding the suitability of the part described herein for any particular purpose, and Pasternack Enterprises does not assume liability arising out of the use of any part or document.

PE3W07833/SP CAD Drawing

Push-On SMP Female Right Angle to Reverse Polarity SMA Plug
Right Angle Cable Using RG316 Coax with 180 Deg. Clock



NOTES:

1. CABLE ASSEMBLY LENGTH LABEL PLACEMENT: 36 INCHES OR LESS, ONE LABEL APPROXIMATELY CENTERED. LONGER THAN 36 INCHES, TWO LABELS APPROXIMATELY 6 INCHES FROM EACH CONNECTOR.
2. CABLE ASSEMBLY SHALL BE TESTED FOR CONTINUITY.
3. CABLE ASSEMBLY LENGTH DETERMINED BY ITEM PN AND DESCRIPTION.

THE INFORMATION CONTAINED IN THIS DRAWING IS THE SOLE PROPERTY OF INFINITE ELECTRONICS, INC. ANY REPRODUCTION IN PART OR WHOLE WITHOUT THE WRITTEN PERMISSION OF INFINITE ELECTRONICS, INC. IS PROHIBITED. THESE COMMODITIES, TECHNOLOGY OR SOFTWARE ARE BEING EXPORTED FROM THE UNITED STATES IN ACCORDANCE WITH THE EXPORT ADMINISTRATION REGULATIONS. DIVERSION CONTRARY TO U.S. LAW PROHIBITED.

		INTERPRET ALL DIMENSIONS AND TOLERANCES PER ASME Y14.5 SCALE NONE SHEET 1 OF 1	
Website: www.Pasternack.com Phone: 1.866.727.8376 1.949.261.1920		DESCRIPTION PUSH-ON SMP FEMALE RIGHT ANGLE TO REVERSE POLARITY SMA PLUG RIGHT ANGLE CABLE USING RG316 COAX WITH 180 DEG. CLOCK	
UNLESS OTHERWISE SPECIFIED, LEADING DIMENSIONS ARE IN INCHES AND TRAILING DIMENSIONS ARE IN MILLIMETERS.	TOLERANCES: .X = ±.2 (5) .XX = ±.02 (0.5) .XXX = ±.005 (0.13)	FRACTIONS ± 1/32 ANGLES ± 1°	CABLE LENGTH TOLERANCES: <12 (305) ≤ 60 (1524) = ±1 (25) / -0 >60 (1524) ≤ 120 (3048) = ±4 (102) / -0 >120 (3048) ≤ 300 (7620) = ±5% / -0
ALL DIMENSIONS ARE FOR REFERENCE ONLY. UNLESS OTHERWISE SPECIFIED, DIMENSIONS ARE NON-CRITICAL FEATURES. DIMENSIONS MAY VARY.		SIZE A CAGE CODE 53919 DRAWN BY DMAY	ITEM NO. PE3W07833/SP REV A