

SMA Male to SMA Male Right Angle Low Loss Cable Using LMR-240-UF Coax with HeatShrink, LF Solder



PE3W08036LF/HS

Configuration

- Connector 1: SMA Male
- Connector 2: SMA Male Right Angle
- Cable Type: LMR-240-UF
- Coax Flex Type: Flexible

Features

- Max Frequency 6 GHz
- Shielding Effectivity > 90 dB
- 84% Phase Velocity
- Double Shielded
- TPE Jacket



Applications

- General Purpose
- Laboratory Use

Description

Pasternack's PE3W08036LF/HS SMA male to SMA male right angle cable using LMR-240-UF coax is part of our full line of RF components available for same-day shipping. Pasternack's flexible RF cable assemblies are ideal for applications where tight bends and flexure are required. This Pasternack SMA to SMA cable assembly has a male to male gender configuration with 50 ohm flexible LMR-240-UF coax. The PE3W08036LF/HS SMA male to SMA male cable assembly operates to 6 GHz. The right angle SMA interface on the LMR-240-UF cable allows for easier connections in tight spaces. The double shielding of this Pasternack cable assembly provides excellent shielding effectiveness of better than 90 dB.

Custom versions of most RF cable assemblies can be built and shipped same day. Custom cable assembly lengths can be obtained by specifying the desired length on the web site at time of order or by contacting a sales representative. Other available RF cable assembly value added services include connector orientation or clocking, heat shrink booting and custom labeling. RF testing can also be performed to document the electrical performance of your cable assembly.

Electrical Specifications

Description	Minimum	Typical	Maximum	Units
Frequency Range	DC		6	GHz
VSWR			1.4:1	
Velocity of Propagation		84		%
RF Shielding	90			dB
Group Delay		1.21 [3.97]		ns/ft [ns/m]
Capacitance		24.2 [79.4]		pF/ft [pF/m]
Inductance		0.06 [0.2]		uH/ft [uH/m]
DC Resistance Inner Conductor		4.28 [14.04]		Ohms/1000ft [Ohms/Km]
DC Resistance Outer Conductor		3.89 [12.76]		Ohms/1000ft [Ohms/Km]

SMA Male to SMA Male Right Angle Low Loss Cable
Using LMR-240-UF Coax with HeatShrink, LF Solder



PE3W08036LF/HS

Electrical Specifications

Description	Minimum	Typical	Maximum	Units
Jacket Spark			5,000	Vrms

Specifications by Frequency

Part Number	Length	Description	F1	F2	F3	F4	F5	Units	Weight (lbs)
			Frequency					MHz	
PE3W08036LF/HS	Custom Lengths Available	Insertion Loss (Typ.)	0.046	0.066	0.095	0.155	0.212	dB/ft	
			0.16	0.22	0.32	0.51	0.7	dB/m	
PE3W08036LF/HS-12	12 inch	Insertion Loss (Typ.)	0.55	0.57	0.6	0.66	0.72	dB	0.073
PE3W08036LF/HS-24	24 inch	Insertion Loss (Typ.)	0.6	0.64	0.69	0.81	0.93	dB	0.106
PE3W08036LF/HS-36	36 inch	Insertion Loss (Typ.)	0.64	0.7	0.79	0.97	1.14	dB	0.138
PE3W08036LF/HS-60	60 inch	Insertion Loss (Typ.)	0.73	0.83	0.98	1.28	1.56	dB	0.202
PE3W08036LF/HS-300	300 inch	Insertion Loss (Typ.)	1.65	2.15	2.88	4.38	5.8	dB	0.842

The insertion loss data for the base model does not include loss due to the connectors. Each length includes insertion loss due to the connectors.

Loss due to Connector 1:	0.25 dB
Loss due to Connector 2:	0.25 dB
Base Weight:	0.073 pounds
Additional Weight per Inch:	0.00267 pounds

Mechanical Specifications

Cable Assembly

Width/Diameter	0.5 in [12.7 mm]
Weight	0.041 lbs [18.6 g]

Cable

Cable Type	LMR-240-UF
Impedance	50 Ohms
Inner Conductor Type	Stranded
Inner Conductor Material and Plating	Copper
Dielectric Type	PE (F)
Number of Shields	2
Shield Layer 1	Aluminum Tape
Shield Layer 2	Tinned Copper Braid
Jacket Material	TPE, Black
Jacket Diameter	0.24 in [6.1 mm]
One Time Minimum Bend Radius	0.75 in [19.05 mm]
Repeated Minimum Bend Radius	2.5 in [63.5 mm]
Bending Moment	0.13 lbs-ft [0.18 N-m]
Flat Plate Crush	13 lbs/in [0.23 Kg/mm]
Tensile Strength	80 lbs [36.29 Kg]

SMA Male to SMA Male Right Angle Low Loss Cable
Using LMR-240-UF Coax with HeatShrink, LF Solder



PE3W08036LF/HS

Connectors

Description	Connector 1	Connector 2
Type	SMA Male	SMA Male Right Angle
Specification	MIL-STD-348	MIL-STD-348
Impedance	50 Ohms	50 Ohms
Configuration	Straight	Right Angle
Mating Cycles		500
Contact Material and Plating	Beryllium Copper, Gold	Brass/Phosphor Bronze, Gold
Contact Plating Specification	ASTM B488	50 µinch
Dielectric Type	PTFE	Teflon
Outer Conductor Material and Plating	Brass, Tri-Metal	
Body Material and Plating	Brass, Tri-Metal	Brass, Tri-Metal
Body Plating Specification		80 µinch
Coupling Nut Material and Plating	Brass, Tri-Metal	Brass, Tri-Metal
Coupling Nut Plating Specification		80 µinch
Hex Size	5/16 Inch	5/16 Inch
Torque		7 in-lbs 0.79 Nm

Environmental Specifications

Operating Range Temperature -40 to +85 deg C

Compliance Certifications (see [product page](#) for current document)

Plotted and Other Data

Notes:

SMA Male to SMA Male Right Angle Low Loss Cable
Using LMR-240-UF Coax with HeatShrink, LF Solder



PE3W08036LF/HS

Typical Performance Data

How to Order

Part Number Configuration:

PE3W08036LF/HS - xx uu



Example: PE3W08036LF/HS-12 = 12 inches long cable
PE3W08036LF/HS-100cm = 100 cm long cable

SMA Male to SMA Male Right Angle Low Loss Cable Using LMR-240-UF Coax with HeatShrink, LF Solder from Pasternack Enterprises has same day shipment for domestic and International orders. Our RF, microwave and millimeter wave products maintain a 99.4% availability and are part of the broadest selection in the industry.

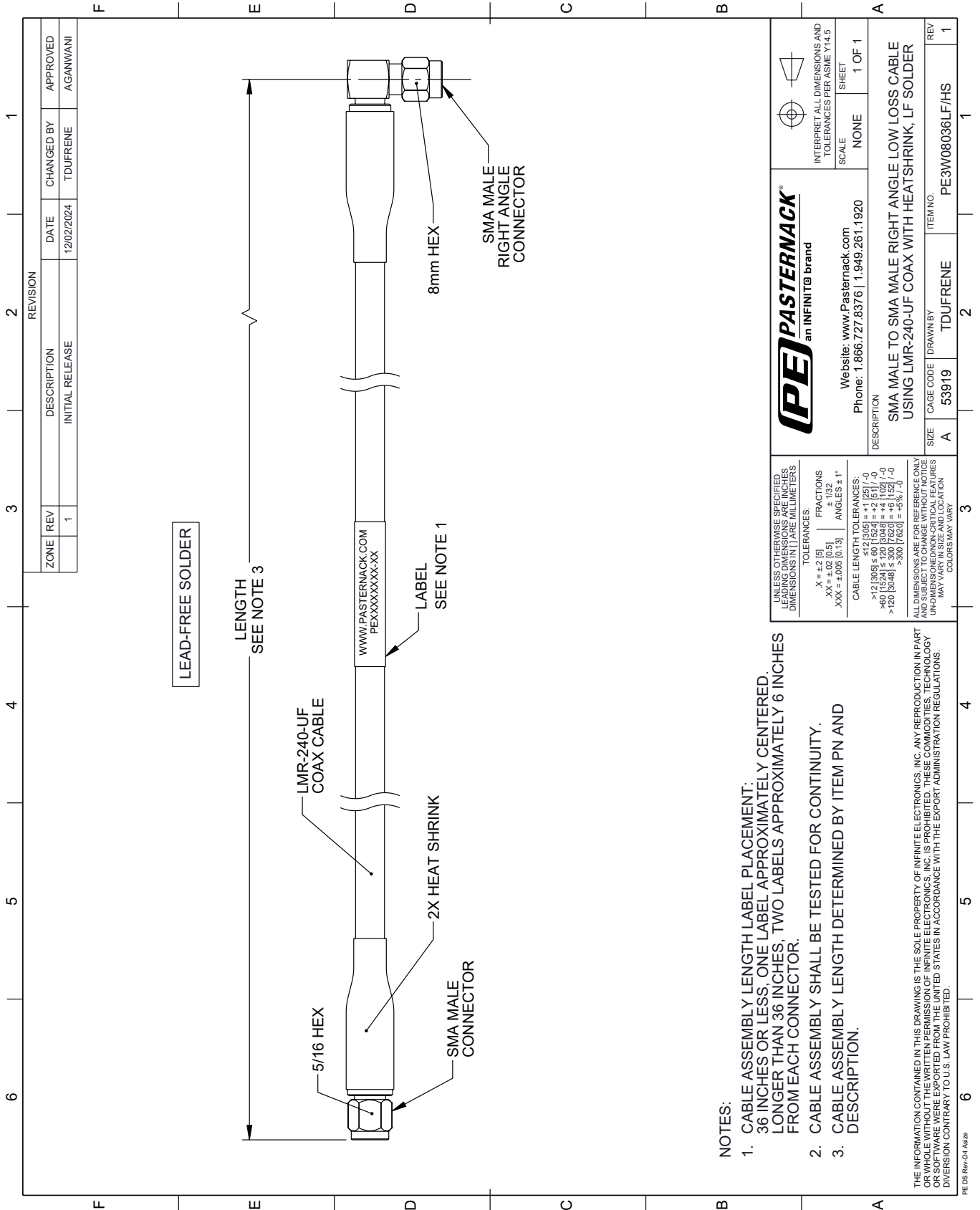
Click the following link (or enter part number in "SEARCH" on website) to obtain additional part information including price, inventory and certifications: [SMA Male to SMA Male Right Angle Low Loss Cable Using LMR-240-UF Coax with HeatShrink, LF Solder PE3W08036LF/HS](#)

URL: <https://www.pasternack.com/sma-male-to-sma-male-low-loss-cable-using-lmr-240-uf-with-heatshrink-lf-solder-pe3w08036lf-hs-p.aspx>

The information contained within this document is accurate to the best of our knowledge and representative of the part described herein. It may be necessary to make modifications to the part and/or the documentation of the part in order to implement improvements. Pasternack Enterprises reserves the right to make such changes as required. Unless otherwise stated, all specifications are nominal. Pasternack Enterprises does not make any representation or warranty regarding the suitability of the part described herein for any particular purpose, and Pasternack Enterprises does not assume liability arising out of the use of any part or document.

PE3W08036LF/HS CAD Drawing

SMA Male to SMA Male Right Angle Low Loss Cable Using LMR-240-UF Coax with HeatShrink, LF Solder



NOTES:

1. CABLE ASSEMBLY LENGTH LABEL PLACEMENT: 36 INCHES OR LESS, ONE LABEL APPROXIMATELY CENTERED. LONGER THAN 36 INCHES, TWO LABELS APPROXIMATELY 6 INCHES FROM EACH CONNECTOR.
2. CABLE ASSEMBLY SHALL BE TESTED FOR CONTINUITY.
3. CABLE ASSEMBLY LENGTH DETERMINED BY ITEM PN AND DESCRIPTION.

THE INFORMATION CONTAINED IN THIS DRAWING IS THE SOLE PROPERTY OF INFINITE ELECTRONICS, INC. ANY REPRODUCTION IN PART OR WHOLE WITHOUT THE WRITTEN PERMISSION OF INFINITE ELECTRONICS, INC. IS PROHIBITED. THESE COMMODITIES, TECHNOLOGY OR SERVICE ARE EXPORTED FROM THE UNITED STATES IN ACCORDANCE WITH THE EXPORT ADMINISTRATION REGULATIONS. DIVERSION CONTRARY TO U.S. LAW PROHIBITED.

		INTERPRET ALL DIMENSIONS AND TOLERANCES PER ASME Y14.5 SCALE: NONE SHEET: 1 OF 1	
Website: www.Pasternack.com Phone: 1.866.727.8376 1.949.281.1920		DESCRIPTION: SMA MALE TO SMA MALE RIGHT ANGLE LOW LOSS CABLE USING LMR-240-UF COAX WITH HEATSHRINK, LF SOLDER	
SIZE: A	CAGE CODE: 53919	DRAWN BY: TDUFRENE	ITEM NO.: PE3W08036LF/HS
UNLESS OTHERWISE SPECIFIED, LEADING DIMENSIONS ARE IN INCHES. DIMENSIONS IN [] ARE MILLIMETERS.		ALL DIMENSIONS ARE FOR REFERENCE ONLY. UNDIMENSIONED NON-CRITICAL FEATURES MAY VARY IN SIZE AND LOCATION. COLORS MAY VARY.	
TOLERANCES: .X = +.2 [-.5] .XX = ±.02 [0.5] .XXX = ±.005 [0.13]	FRACTIONS: ± 1/32 ANGLES ± 1°	CABLE LENGTH TOLERANCES: ≤ 12 [305] ± .60 [1524] = +.2 [-.5] / -0 > 12 [305] ≤ 60 [1524] = +.4 [-.2] / -0 > 60 [1524] ≤ 120 [3048] = +.4 [-.2] / -0 > 120 [3048] ≤ 300 [7620] = +.6 [-.3] / -0	

REVISION			
ZONE	REV	DESCRIPTION	DATE
	1	INITIAL RELEASE	12/02/2024
		CHANGED BY	APPROVED
		TDUFRENE	AGANWANI