

SMA Male to BNC Female Bulkhead Cable Using RG316-DS Coax with HeatShrink



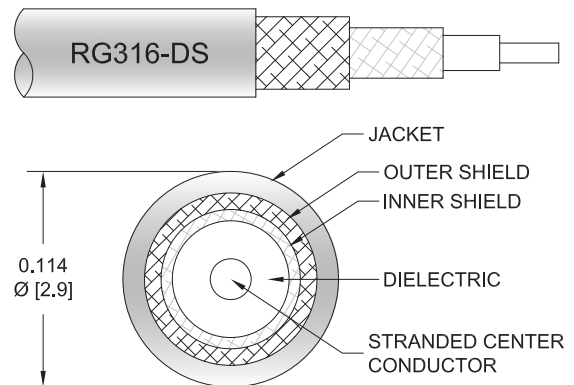
PE3W08062/HS

Configuration

- Connector 1: SMA Male
- Connector 2: BNC Female Bulkhead
- Cable Type: RG316-DS
- Coax Flex Type: Flexible

Features

- Max Frequency 2 GHz
- 70% Phase Velocity
- Double Shielded
- FEP Jacket



Applications

- General Purpose
- Laboratory Use

Description

Pasternack's PE3W08062/HS SMA male to BNC female bulkhead cable using RG316-DS coax is part of our full line of RF components available for same-day shipping. Pasternack's flexible RF cable assemblies are ideal for applications where tight bends and flexure are required. This Pasternack SMA to BNC cable assembly has a male to female gender configuration with 50 ohm flexible RG316-DS coax. The PE3W08062/HS SMA male to BNC female cable assembly operates to 2 GHz. Our RF cable assembly with BNC bulkhead interface allows designers to create external connections on their product enclosures, and can be used in a variety of other rack mount and panel mount applications. The double shielding of this Pasternack cable assembly provides excellent shielding effectiveness.

Custom versions of most RF cable assemblies can be built and shipped same day. Custom cable assembly lengths can be obtained by specifying the desired length on the web site at time of order or by contacting a sales representative. Other available RF cable assembly value added services include connector orientation or clocking, heat shrink booting and custom labeling. RF testing can also be performed to document the electrical performance of your cable assembly.

Electrical Specifications

Description	Minimum	Typical	Maximum	Units
Frequency Range	DC		2	GHz
VSWR			1.5:1	
Velocity of Propagation		70		%
Capacitance		29.4 [96.46]		pF/ft [pF/m]

Specifications by Frequency

SMA Male to BNC Female Bulkhead Cable
Using RG316-DS Coax with HeatShrink



PE3W08062/HS

Part Number	Length	Description	F1	F2	F3	F4	F5	Units	Weight (lbs)
			Frequency					MHz	
PE3W08062/HS	Custom Lengths Available	Insertion Loss (Typ.)	0.04	0.08	0.13	0.19	0.394	dB/ft	
			0.14	0.28	0.43	0.64	1.3	dB/m	
PE3W08062/HS-6	6 inch	Insertion Loss (Typ.)	0.23	0.25	0.27	0.3	0.4	dB	0.054
PE3W08062/HS-12	12 inch	Insertion Loss (Typ.)	0.25	0.29	0.33	0.4	0.6	dB	0.061
PE3W08062/HS-24	24 inch	Insertion Loss (Typ.)	0.29	0.37	0.46	0.59	0.99	dB	0.076
PE3W08062/HS-36	36 inch	Insertion Loss (Typ.)	0.33	0.45	0.59	0.79	1.39	dB	0.09
PE3W08062/HS-48	48 inch	Insertion Loss (Typ.)	0.37	0.54	0.72	0.98	1.78	dB	0.104

The insertion loss data for the base model does not include loss due to the connectors. Each length includes insertion loss due to the connectors.

Loss due to Connector 1: 0.1 dB
 Loss due to Connector 2: 0.1 dB
 Base Weight: 0.061 pounds
 Additional Weight per Inch: 0.00117 pounds

Mechanical Specifications

Cable Assembly

Width/Diameter 0.5 in [12.7 mm]

Cable

Cable Type RG316-DS
 Impedance 50 Ohms
 Inner Conductor Type Stranded
 Inner Conductor Material and Plating Copper Clad Steel, Silver
 Dielectric Type PTFE
 Number of Shields 2
 Shield Layer 1 Silver Plated Copper Braid
 Shield Layer 2 Silver Plated Copper Braid
 Jacket Material FEP, Tan
 Jacket Diameter 0.114 in [2.9 mm]
 Repeated Minimum Bend Radius 0.6 in [15.24 mm]

SMA Male to BNC Female Bulkhead Cable
Using RG316-DS Coax with HeatShrink



PE3W08062/HS

Connectors

Description	Connector 1	Connector 2
Type	SMA Male	BNC Female Bulkhead
Specification	MIL-STD-348A	MIL-STD-348
Impedance	50 Ohms	50 Ohms
Configuration	Straight	Straight
Contact Material and Plating	Brass, Gold	Beryllium Copper, Gold
Contact Plating Specification	30 µin minimum	
Dielectric Type	PTFE	PTFE
Body Material and Plating	Brass, Nickel	Brass, Nickel
Body Plating Specification	100 µin minimum	
Coupling Nut Material and Plating	Brass, Nickel	
Coupling Nut Plating Specification	100 µin minimum	
Hex Size	5/16 inch	
Torque	3 in-lbs 0.34 Nm	

Environmental Specifications

Operating Range Temperature -55 to +165 deg C

Compliance Certifications (see [product page](#) for current document)

Plotted and Other Data

Notes:

SMA Male to BNC Female Bulkhead Cable Using RG316-DS Coax with HeatShrink



PE3W08062/HS

Typical Performance Data

How to Order

Part Number Configuration:

PE3W08062/HS - xx uu



Example: PE3W08062/HS-12 = 12 inches long cable
PE3W08062/HS-100cm = 100 cm long cable

SMA Male to BNC Female Bulkhead Cable Using RG316-DS Coax with HeatShrink from Pasternack Enterprises has same day shipment for domestic and International orders. Our RF, microwave and millimeter wave products maintain a 99.4% availability and are part of the broadest selection in the industry.

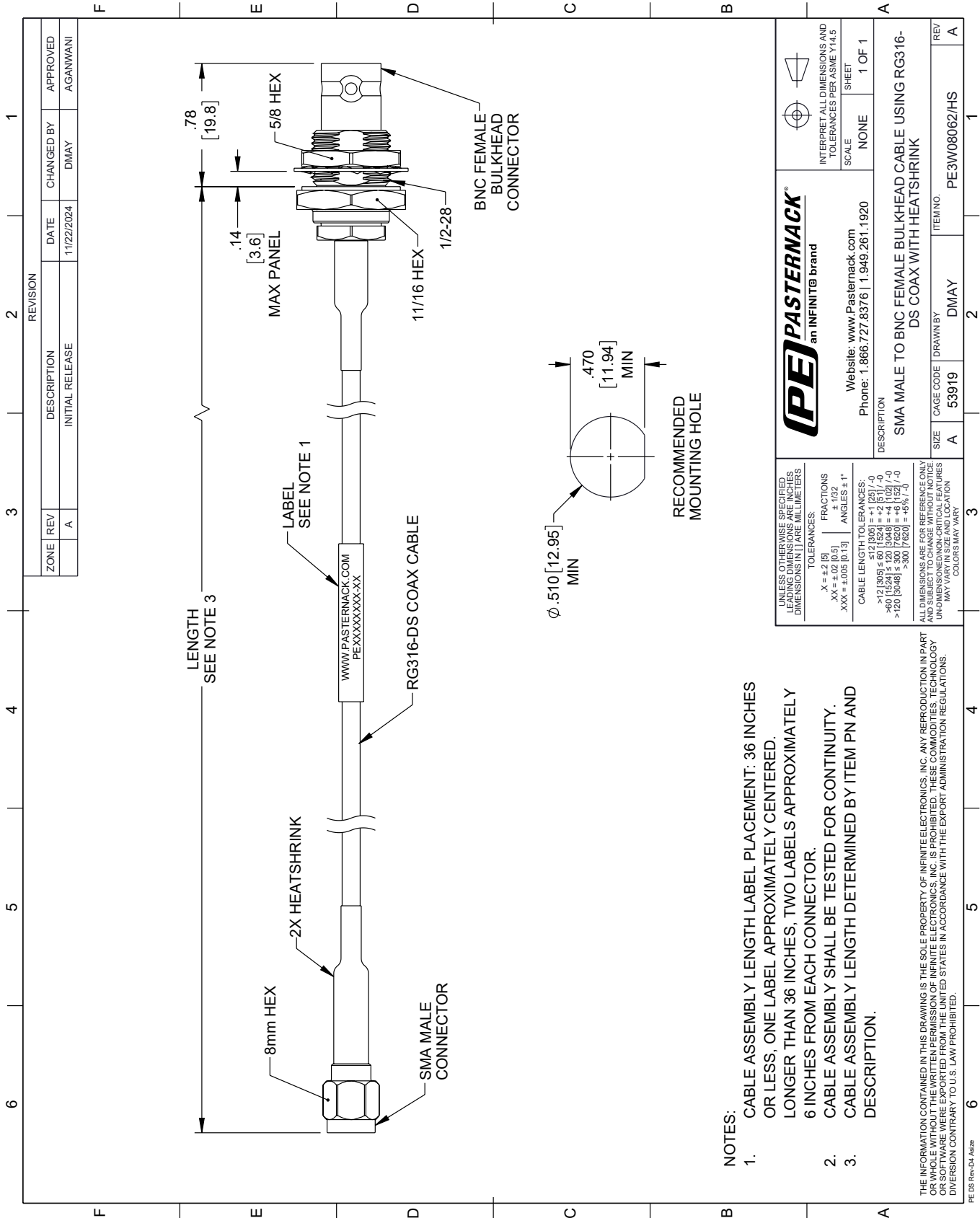
Click the following link (or enter part number in "SEARCH" on website) to obtain additional part information including price, inventory and certifications: [SMA Male to BNC Female Bulkhead Cable Using RG316-DS Coax with HeatShrink PE3W08062/HS](#)

URL: <https://www.pasternack.com/sma-male-to-bnc-female-bulkhead-cable-using-rg316-ds-with-heatshrink-pe3w08062-hs-p.aspx>

The information contained within this document is accurate to the best of our knowledge and representative of the part described herein. It may be necessary to make modifications to the part and/or the documentation of the part in order to implement improvements. Pasternack Enterprises reserves the right to make such changes as required. Unless otherwise stated, all specifications are nominal. Pasternack Enterprises does not make any representation or warranty regarding the suitability of the part described herein for any particular purpose, and Pasternack Enterprises does not assume liability arising out of the use of any part or document.

PE3W08062/HS CAD Drawing

SMA Male to BNC Female Bulkhead Cable Using RG316-DS Coax with HeatShrink



NOTES:

1. CABLE ASSEMBLY LENGTH LABEL PLACEMENT: 36 INCHES OR LESS, ONE LABEL APPROXIMATELY CENTERED. LONGER THAN 36 INCHES, TWO LABELS APPROXIMATELY 6 INCHES FROM EACH CONNECTOR.
2. CABLE ASSEMBLY SHALL BE TESTED FOR CONTINUITY.
3. CABLE ASSEMBLY LENGTH DETERMINED BY ITEM PN AND DESCRIPTION.

THE INFORMATION CONTAINED IN THIS DRAWING IS THE SOLE PROPERTY OF INFINITE ELECTRONICS, INC. ANY REPRODUCTION IN PART OR WHOLE WITHOUT THE WRITTEN PERMISSION OF INFINITE ELECTRONICS, INC. IS PROHIBITED. THESE COMMODITIES, TECHNOLOGY OR SOFTWARE ARE EXPORTED FROM THE UNITED STATES IN ACCORDANCE WITH THE EXPORT ADMINISTRATION REGULATIONS. DIVERSION CONTRARY TO U.S. LAW PROHIBITED.

		INTERPRET ALL DIMENSIONS AND TOLERANCES PER ASME Y14.5 SCALE: NONE SHEET: 1 OF 1	
Website: www.Pasternack.com Phone: 1.866.727.8376 1.949.261.1920		DESCRIPTION: SMA MALE TO BNC FEMALE BULKHEAD CABLE USING RG316-DS COAX WITH HEATSHRINK	
UNLESS OTHERWISE SPECIFIED, LEADING DIMENSIONS ARE IN INCHES, TRAILING DIMENSIONS ARE IN MILLIMETERS.	TOLERANCES: .X = ±.2 (5) .XX = ±.02 (0.5) .XXX = ±.005 (0.13)	FRACTIONS: ± 1/32 ANGLES ± 1°	CABLE LENGTH TOLERANCES: ≤ 12 (305) ±.60 (15.24) = ±.2 (5) / -0 > 12 (305) ≤ 60 (1524) = ±.4 (10.2) / -0 > 60 (1524) ≤ 120 (3048) = ±.4 (10.2) / -0 > 120 (3048) ≤ 300 (7620) = ±.6 (15.24) / -0
ALL DIMENSIONS ARE FOR REFERENCE ONLY. UNLESS OTHERWISE SPECIFIED, ALL DIMENSIONS ARE NON-CRITICAL FEATURES. MAY VARY IN SIZE AND LOCATION. COLORS MAY VARY.		SIZE: A CAGE CODE: 53919 DRAWN BY: DMAY	ITEM NO.: PE3W08062/HS REV: A