



SMP Female to SMA Male Right Angle Cable Using PE-SR405FLJ Coax with HeatShrink

RF Cable Assemblies Technical Data Sheet

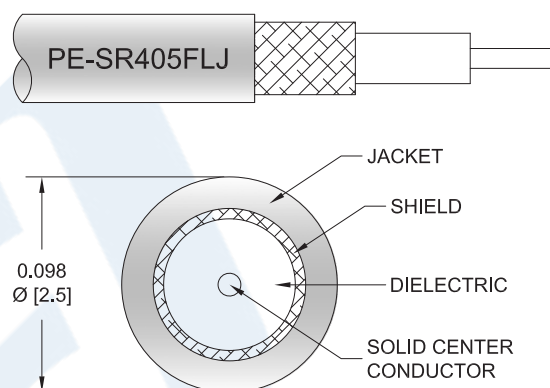
PE3W08280/HS

Configuration

- Connector 1: SMP Female
- Connector 2: SMA Male Right Angle
- Cable Type: PE-SR405FLJ

Features

- Max Frequency 10 GHz
- Shielding Effectivity > 100 dB
- 69.5% Phase Velocity
- FEP Jacket



Applications

- General Purpose
- Laboratory Use

Description

Pasternack's PE3W08280/HS SMP female to SMA male right angle cable using PE-SR405FLJ coax is part of our full line of RF components available for same-day shipping. Pasternack's formable RF cable assemblies provide an alternative to costly pre-formed semi-rigid assemblies since they are hand formable. This Pasternack SMP to SMA cable assembly has a female to male gender configuration with 50 ohm formable PE-SR405FLJ coax. The PE3W08280/HS SMP female to SMA male cable assembly operates to 10 GHz. The right angle SMA interface on the PE-SR405FLJ cable allows for easier connections in tight spaces.

Custom versions of most RF cable assemblies can be built and shipped same day. Custom cable assembly lengths can be obtained by specifying the desired length on the web site at time of order or by contacting a sales representative. Other available RF cable assembly value added services include connector orientation or clocking, heat shrink booting and custom labeling. RF testing can also be performed to document the electrical performance of your cable assembly.

Click the following link (or enter part number in "SEARCH" on website) to obtain additional part information including price, inventory and certifications: [SMP Female to SMA Male Right Angle Cable Using PE-SR405FLJ Coax with HeatShrink PE3W08280/HS](#)



SMP Female to SMA Male Right Angle Cable
Using PE-SR405FLJ Coax with HeatShrink

RF Cable Assemblies Technical Data Sheet

PE3W08280/HS

Electrical Specifications

| Description | Minimum | Typical | Maximum | Units |
|-------------------------------|---------|---------------|---------|-----------------|
| Frequency Range | DC | | 10 | GHz |
| VSWR | | | 1.4:1 | |
| Velocity of Propagation | | 69.5 | | % |
| RF Shielding | 100 | | | dB |
| Group Delay | | 1.43 [4.69] | | ns/ft [ns/m] |
| Capacitance | | 29 [95.14] | | pF/ft [pF/m] |
| DC Resistance Inner Conductor | | 65.7 [215.55] | | Ω/1000ft [Ω/Km] |
| DC Resistance Outer Conductor | | 10.2 [33.46] | | Ω/1000ft [Ω/Km] |

Specifications by Frequency

| Description | F1 | F2 | F3 | F4 | F5 | Units |
|-----------------------|------|-------|-------|-------|-------|-------|
| Frequency | 0.5 | 1 | 2.5 | 5 | 10 | GHz |
| Insertion Loss (Typ.) | 0.15 | 0.225 | 0.346 | 0.549 | 0.812 | dB/ft |
| | 0.49 | 0.74 | 1.14 | 1.8 | 2.66 | dB/m |

Electrical Specification Notes:

Insertion Loss does not include the loss of the connectors. Insertion Loss is estimated as 0.2 dB for the right angle connector and 0.1 dB for the straight connector.

Mechanical Specifications

Cable Assembly

Cable

| | |
|--------------------------------------|-------------------------------|
| Cable Type | PE-SR405FLJ |
| Impedance | 50 Ohms |
| Inner Conductor Type | Solid |
| Inner Conductor Material and Plating | Copper Clad Steel, Silver |
| Dielectric Type | PTFE |
| Number of Shields | 1 |
| Outer Conductor Material and Plating | Tinned Copper Composite Braid |
| Jacket Material | FEP, Black |
| Jacket Diameter | 0.105 in [2.67 mm] |
| One Time Minimum Bend Radius | 0.5 in [12.7 mm] |
| Repeated Minimum Bend Radius | 0.787 in [19.99 mm] |

Click the following link (or enter part number in "SEARCH" on website) to obtain additional part information including price, inventory and certifications: [SMP Female to SMA Male Right Angle Cable Using PE-SR405FLJ Coax with HeatShrink PE3W08280/HS](#)



SMP Female to SMA Male Right Angle Cable
Using PE-SR405FLJ Coax with HeatShrink

RF Cable Assemblies Technical Data Sheet

PE3W08280/HS

Connectors

| Description | Connector 1 | Connector 2 |
|-----------------------------------|------------------------|----------------------------|
| Type | SMP Female | SMA Male Right Angle |
| Specification | MIL-STD-348 | |
| Impedance | 50 Ohms | 50 Ohms |
| Contact Material and Plating | Beryllium Copper, Gold | Brass, Gold over Nickel |
| Contact Plating Specification | MIL-G-45204 | 0.2 µin minimum |
| Dielectric Type | PTFE | PTFE |
| Body Material and Plating | Beryllium Copper, Gold | Brass, Gold over Nickel |
| Body Plating Specification | MIL-G-45204 | 0.1 µin minimum |
| Coupling Nut Material and Plating | | Passivated Stainless Steel |
| Hex Size | | 5/16 inch |
| Torque | | 8 in-lbs [0.9 Nm] |

Compliance Certifications (see [product page](#) for current document)

Plotted and Other Data

Notes:

Click the following link (or enter part number in "SEARCH" on website) to obtain additional part information including price, inventory and certifications: [SMP Female to SMA Male Right Angle Cable Using PE-SR405FLJ Coax with HeatShrink PE3W08280/HS](#)



SMP Female to SMA Male Right Angle Cable Using PE-SR405FLJ Coax with HeatShrink

RF Cable Assemblies Technical Data Sheet

PE3W08280/HS

How to Order

Part Number Configuration:

PE3W08280/HS

- **xx**

uu

Unit of Measure:
cm = Centimeters
<blank> = Inches
Length
Base Number

Example: PE3W08280/HS-12 = 12 inches long cable
PE3W08280/HS-100cm = 100 cm long cable

SMP Female to SMA Male Right Angle Cable Using PE-SR405FLJ Coax with HeatShrink from Pasternack Enterprises has same day shipment for domestic and International orders. Our RF, microwave and millimeter wave products maintain a 99.4% availability and are part of the broadest selection in the industry.

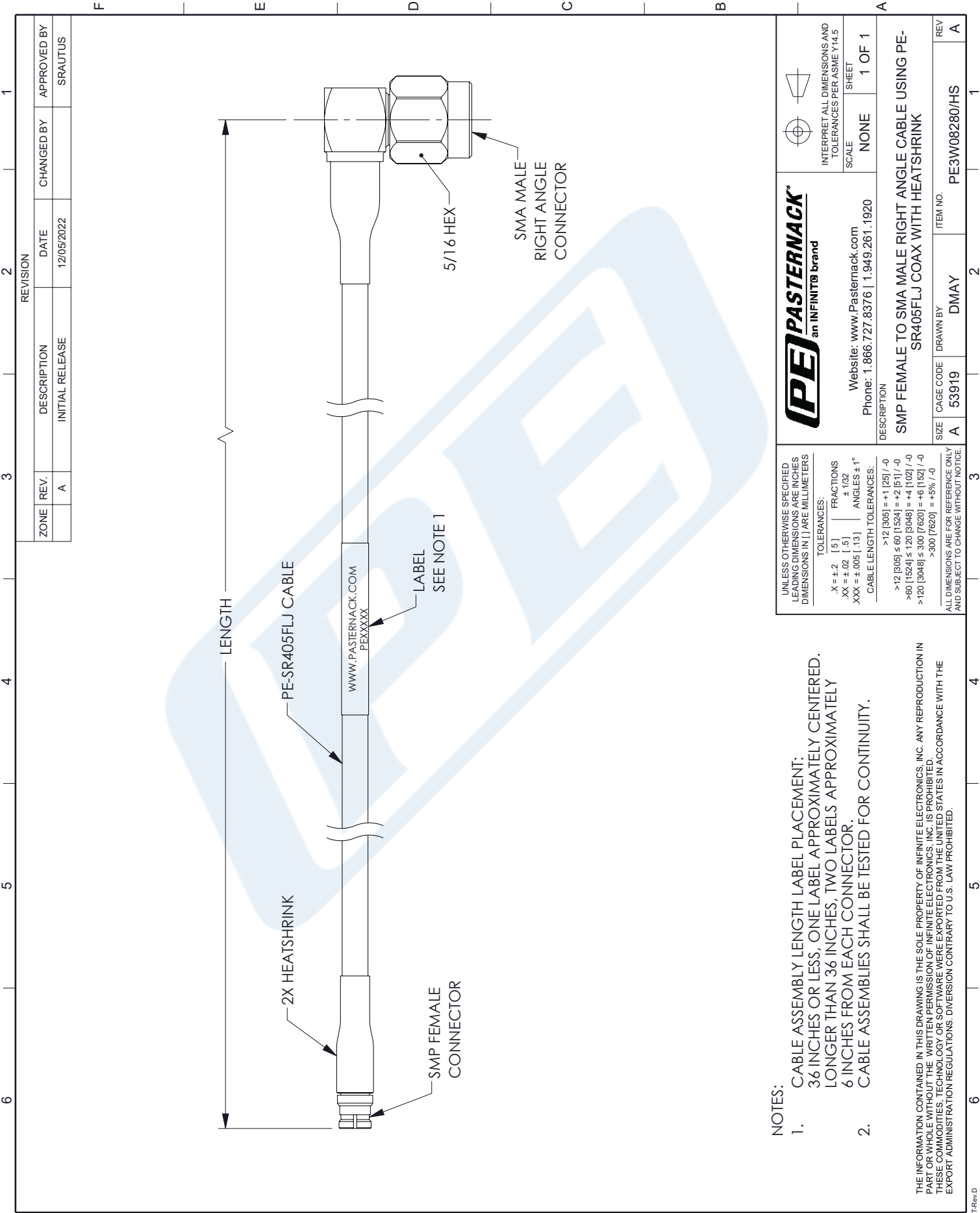
Click the following link (or enter part number in "SEARCH" on website) to obtain additional part information including price, inventory and certifications: [SMP Female to SMA Male Right Angle Cable Using PE-SR405FLJ Coax with HeatShrink PE3W08280/HS](#)

URL:

The information contained in this document is accurate to the best of our knowledge and representative of the part described herein. It may be necessary to make modifications to the part and/or the documentation of the part, in order to implement improvements. Pasternack reserves the right to make such changes as required. Unless otherwise stated, all specifications are nominal. Pasternack does not make any representation or warranty regarding the suitability of the part described herein for any particular purpose, and Pasternack does not assume any liability arising out of the use of any part or documentation.

PE3W08280/HS CAD Drawing

SMP Female to SMA Male Right Angle Cable Using PE-SR405FLJ Coax with HeatShrink



NOTES:

1. CABLE ASSEMBLY LENGTH LABEL PLACEMENT:
36 INCHES OR LESS, ONE LABEL APPROXIMATELY CENTERED.
LONGER THAN 36 INCHES, TWO LABELS APPROXIMATELY
6 INCHES FROM EACH CONNECTOR.
2. CABLE ASSEMBLIES SHALL BE TESTED FOR CONTINUITY.

THE INFORMATION CONTAINED IN THIS DRAWING IS THE SOLE PROPERTY OF INFINITE ELECTRONICS, INC. ANY REPRODUCTION IN PART OR WHOLE WITHOUT THE WRITTEN PERMISSION OF INFINITE ELECTRONICS, INC. IS PROHIBITED. THESE COMMODITIES, TECHNOLOGY OR SOFTWARE WERE EXPORTED FROM THE UNITED STATES IN ACCORDANCE WITH THE EXPORT ADMINISTRATION REGULATIONS. DIVERSION CONTRARY TO U.S. LAW PROHIBITED.

| | |
|--|-------------|
| UNLESS OTHERWISE SPECIFIED LEADING DIMENSIONS ARE INCHES DIMENSIONS IN [] ARE MILLIMETERS | |
| TOLERANCES: | FRACTIONS |
| X = ±.2 [.5] | ± 1/32 |
| .XX = ±.02 [.5] | ± 1/16 |
| XXX = ±.005 [.13] | ANGLES ± 1° |
| CABLE LENGTH TOLERANCES: | |
| >12 [305] = +1 [25] / -0 | |
| >12 [305] ≤ 60 [1524] = +2 [51] / -0 | |
| >60 [1524] ≤ 120 [3048] = +4 [102] / -0 | |
| >120 [3048] ≤ 300 [7620] = +6 [152] / -0 | |
| >300 [7620] = +5% / -0 | |
| ALL DIMENSIONS ARE FOR REFERENCE ONLY AND SUBJECT TO CHANGE WITHOUT NOTICE. | |



Website: www.Pasternack.com
Phone: 1.866.727.8376 | 1.949.261.1920

DESCRIPTION

SMP FEMALE TO SMA MALE RIGHT ANGLE CABLE USING PE-SR405FLJ COAX WITH HEATSHRINK

| | | | | |
|------|-----------|----------|--------------|-----|
| SIZE | CAGE CODE | DRAWN BY | ITEM NO. | REV |
| A | 53919 | DMAY | PE3W08280/HS | A |

| | |
|--|--------|
| INTERPRET ALL DIMENSIONS AND TOLERANCES PER ASME Y14.5 | |
| SCALE | SHEET |
| NONE | 1 OF 1 |



| REVISION | | | |
|----------|------|-----------------|-------------|
| ZONE | REV. | DESCRIPTION | DATE |
| | A | INITIAL RELEASE | 12/05/2022 |
| | | | APPROVED BY |
| | | | SRAUTUS |