



## SMA Female 4 Hole Flange to SMA Male Cable Using PE-SR047FL Coax

### RF Cable Assemblies Technical Data Sheet

**PE3W08679**

#### Configuration

- Connector 1: SMA Female 4 Hole Flange
- Connector 2: SMA Male
- Cable Type: PE-SR047FL

#### Features

- Max Frequency 18 GHz
- 69.5% Phase Velocity

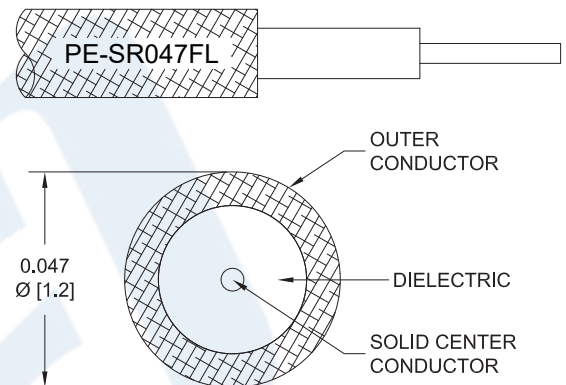
#### Applications

- General Purpose
- Laboratory Use

#### Description

Pasternack's PE3W08679 SMA female 4 hole flange to SMA male cable using PE-SR047FL coax is part of our full line of RF components available for same-day shipping. Pasternack's formable RF cable assemblies provide an alternative to costly pre-formed semi-rigid assemblies since they are hand formable. This Pasternack SMA to SMA cable assembly has a female to male gender configuration with 50 ohm formable PE-SR047FL coax. The PE3W08679 SMA female to SMA male cable assembly operates to 18 GHz. Our RF cable assembly with SMA 4 hole flange interface allows designers to create external connections on their product enclosures, and can be used in a variety of other rack mount and panel mount applications.

Custom versions of most RF cable assemblies can be built and shipped same day. Custom cable assembly lengths can be obtained by specifying the desired length on the web site at time of order or by contacting a sales representative. Other available RF cable assembly value added services include connector orientation or clocking, heat shrink booting and custom labeling. RF testing can also be performed to document the electrical performance of your cable assembly.



Click the following link (or enter part number in "SEARCH" on website) to obtain additional part information including price, inventory and certifications: [SMA Female 4 Hole Flange to SMA Male Cable Using PE-SR047FL Coax PE3W08679](#)



SMA Female 4 Hole Flange to SMA Male  
Cable Using PE-SR047FL Coax

**RF Cable Assemblies Technical Data Sheet**

**PE3W08679**

**Electrical Specifications**

Description	Minimum	Typical	Maximum	Units
Frequency Range	DC		18	GHz
VSWR			1.4:1	
Velocity of Propagation		69.5		%
Capacitance		32 [104.99]		pF/ft [pF/m]
DC Resistance Inner Conductor		207 [679.13]		$\Omega$ /1000ft [ $\Omega$ /Km]
DC Resistance Outer Conductor		8 [26.25]		$\Omega$ /1000ft [ $\Omega$ /Km]

**Specifications by Frequency**

Description	F1	F2	F3	F4	F5	Units
Frequency	1	2	4.5	9	18	GHz
Insertion Loss (Typ.)	0.36	0.505	0.807	1.196	1.8	dB/ft
	1.18	1.66	2.65	3.92	5.91	dB/m

**Electrical Specification Notes:**

Insertion Loss does not include the loss of the connectors. Insertion Loss is estimated as 0.1 dB for the female connector and 0.05XSQRT(FGHz) dB for the male connector.

**Mechanical Specifications**

**Cable Assembly**

Weight 0.027 lbs [12.25 g]

**Cable**

Cable Type PE-SR047FL  
 Impedance 50 Ohms  
 Inner Conductor Type Solid  
 Inner Conductor Material and Plating Copper Clad Steel, Silver  
 Dielectric Type PTFE  
 Number of Shields 1  
 Outer Conductor Material and Plating Tinned Copper Braid

Click the following link (or enter part number in "SEARCH" on website) to obtain additional part information including price, inventory and certifications: [SMA Female 4 Hole Flange to SMA Male Cable Using PE-SR047FL Coax PE3W08679](#)



SMA Female 4 Hole Flange to SMA Male  
Cable Using PE-SR047FL Coax

**RF Cable Assemblies Technical Data Sheet**

**PE3W08679**

**Connectors**

Description	Connector 1	Connector 2
Type	SMA Female 4 Hole Flange	SMA Male
Specification	MIL-STD-348	
Impedance	50 Ohms	50 Ohms
Mating Cycles		500
Contact Material and Plating	Beryllium Copper, Gold over Nickel	Beryllium Copper, Gold over Nickel
Contact Plating Specification	50 µin minimum	MIL-G-45204
Dielectric Type	PTFE	PTFE
Body Material and Plating	Stainless Steel, Gold over Nickel	Brass, Gold
Body Plating Specification	50 µin minimum	MIL-G-45204
Coupling Nut Material and Plating		Passivated Stainless Steel
Coupling Nut Plating Specification		ASTM-A380
Hex Size		5/16 inch
Torque		8 in-lbs [0.9 Nm]

**Compliance Certifications** (see [product page](#) for current document)

**Plotted and Other Data**

Notes:

Click the following link (or enter part number in "SEARCH" on website) to obtain additional part information including price, inventory and certifications: [SMA Female 4 Hole Flange to SMA Male Cable Using PE-SR047FL Coax PE3W08679](#)



SMA Female 4 Hole Flange to SMA Male  
Cable Using PE-SR047FL Coax

**RF Cable Assemblies Technical Data Sheet**

**PE3W08679**

**How to Order**

Part Number Configuration:

**PE3W08679**

- **xx**

**uu**

Unit of Measure:  
cm = Centimeters  
<blank> = Inches  
Length  
Base Number

Example: PE3W08679-12 = 12 inches long cable  
PE3W08679-100cm = 100 cm long cable

SMA Female 4 Hole Flange to SMA Male Cable Using PE-SR047FL Coax from Pasternack Enterprises has same day shipment for domestic and International orders. Our RF, microwave and millimeter wave products maintain a 99.4% availability and are part of the broadest selection in the industry.

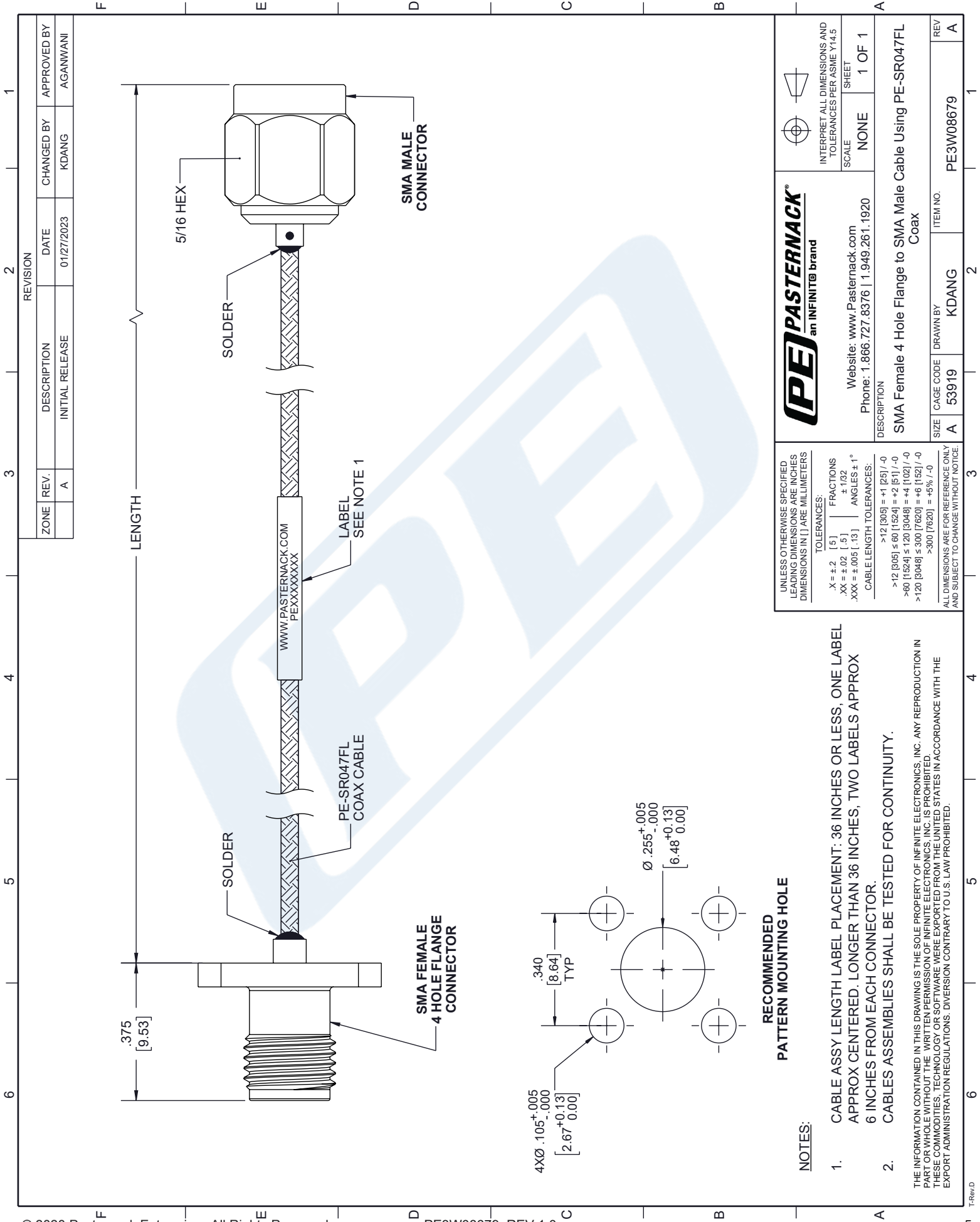
Click the following link (or enter part number in "SEARCH" on website) to obtain additional part information including price, inventory and certifications: [SMA Female 4 Hole Flange to SMA Male Cable Using PE-SR047FL Coax PE3W08679](#)

URL: <https://www.pasternack.com/sma-female-4-hole-flange-to-sma-male-cable-using-pe-sr047fl-pe3w08679-p.aspx>

The information contained in this document is accurate to the best of our knowledge and representative of the part described herein. It may be necessary to make modifications to the part and/or the documentation of the part, in order to implement improvements. Pasternack reserves the right to make such changes as required. Unless otherwise stated, all specifications are nominal. Pasternack does not make any representation or warranty regarding the suitability of the part described herein for any particular purpose, and Pasternack does not assume any liability arising out of the use of any part or documentation.

# PE3W08679 CAD Drawing

SMA Female 4 Hole Flange to SMA Male Cable Using PE-SR047FL Coax



### RECOMMENDED PATTERN MOUNTING HOLE

#### NOTES:

1. CABLE ASSY LENGTH LABEL PLACEMENT: 36 INCHES OR LESS; ONE LABEL APPROX CENTERED. LONGER THAN 36 INCHES, TWO LABELS APPROX 6 INCHES FROM EACH CONNECTOR.
2. CABLES ASSEMBLIES SHALL BE TESTED FOR CONTINUITY.

THE INFORMATION CONTAINED IN THIS DRAWING IS THE SOLE PROPERTY OF INFINITE ELECTRONICS, INC. ANY REPRODUCTION IN PART OR WHOLE WITHOUT THE WRITTEN PERMISSION OF INFINITE ELECTRONICS, INC. IS PROHIBITED. THESE COMMODITIES, TECHNOLOGY OR SOFTWARE WERE EXPORTED FROM THE UNITED STATES IN ACCORDANCE WITH THE EXPORT ADMINISTRATION REGULATIONS. DIVERSION CONTRARY TO U.S. LAW PROHIBITED.

UNLESS OTHERWISE SPECIFIED LEADING DIMENSIONS ARE INCHES DIMENSIONS IN [ ] ARE MILLIMETERS

TOLERANCES:  
 .X = ±.2 [5] FRACTIONS ±.1/32  
 .XX = ±.02 [5] ANGLES ± 1°  
 .XXX = ±.005 [13] CABLE LENGTH TOLERANCES:  
 >12 [305] = +1 [25] / -0  
 >12 [305] ≤ 60 [1524] = +2 [5] / -0  
 >60 [1524] ≤ 120 [3048] = +4 [102] / -0  
 >120 [3048] ≤ 300 [7620] = +6 [152] / -0  
 >300 [7620] = +5% / -0

ALL DIMENSIONS ARE FOR REFERENCE ONLY AND SUBJECT TO CHANGE WITHOUT NOTICE.

**(PE) PASTERNAK**  
 an INFINIT® brand

Website: [www.Pasternack.com](http://www.Pasternack.com)  
 Phone: 1.866.727.8376 | 1.949.261.1920

INTERPRET ALL DIMENSIONS AND TOLERANCES PER ASME Y14.5  
 SCALE NONE SHEET 1 OF 1

DESCRIPTION  
 SMA Female 4 Hole Flange to SMA Male Cable Using PE-SR047FL Coax

SIZE	CAGE CODE	DRAWN BY	ITEM NO.	REV
A	53919	KDANG	PE3W08679	A