

SMA Male Right Angle to SMA Female Bulkhead
Cable Using PE-SR402FL Coax , LF Solder



RF Cable Assemblies Technical Data Sheet

PE3W09320LF

Configuration

- Connector 1: SMA Male Right Angle
- Connector 2: SMA Female Bulkhead
- Cable Type: PE-SR402FL

Features

- Max Frequency 6 GHz
- Shielding Effectivity > 110 dB
- 69.5% Phase Velocity

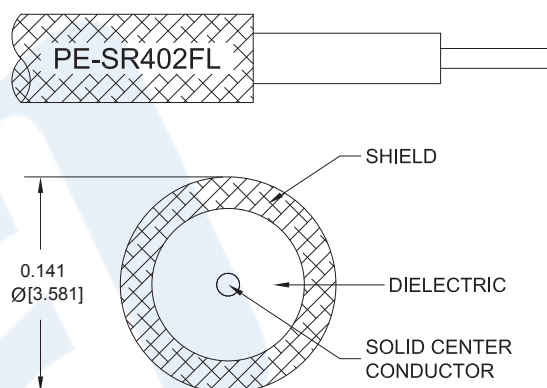
Applications

- General Purpose
- Laboratory Use

Description

Pasternack's PE3W09320LF SMA male right angle to SMA female bulkhead cable using PE-SR402FL coax is part of our full line of RF components available for same-day shipping. Pasternack's formable RF cable assemblies provide an alternative to costly pre-formed semi-rigid assemblies since they are hand formable. This Pasternack SMA to SMA cable assembly has a male to female gender configuration with 50 ohm formable PE-SR402FL coax. The PE3W09320LF SMA male to SMA female cable assembly operates to 6 GHz. The right angle SMA interface on the PE-SR402FL cable allows for easier connections in tight spaces. Our RF cable assembly with SMA bulkhead interface allows designers to create external connections on their product enclosures, and can be used in a variety of other rack mount and panel mount applications.

Custom versions of most RF cable assemblies can be built and shipped same day. Custom cable assembly lengths can be obtained by specifying the desired length on the web site at time of order or by contacting a sales representative. Other available RF cable assembly value added services include connector orientation or clocking, heat shrink booting and custom labeling. RF testing can also be performed to document the electrical performance of your cable assembly.



Click the following link (or enter part number in "SEARCH" on website) to obtain additional part information including price, inventory and certifications: [SMA Male Right Angle to SMA Female Bulkhead Cable Using PE-SR402FL Coax , LF Solder PE3W09320LF](#)



SMA Male Right Angle to SMA Female Bulkhead
Cable Using PE-SR402FL Coax , LF Solder

RF Cable Assemblies Technical Data Sheet

PE3W09320LF

Electrical Specifications

Description	Minimum	Typical	Maximum	Units
Frequency Range	DC		6	GHz
VSWR			1.4:1	
Velocity of Propagation		69.5		%
RF Shielding	110			dB
Capacitance		29 [95.14]		pF/ft [pF/m]
DC Resistance Inner Conductor		7.8 [25.59]		Ω /1000ft [Ω /Km]
DC Resistance Outer Conductor		5.5 [18.04]		Ω /1000ft [Ω /Km]

Specifications by Frequency

Description	F1	F2	F3	F4	F5	Units
Frequency	0.5	1	2.5	6		GHz
Insertion Loss (Typ.)	0.08	0.12	0.183	0.322		dB/ft
	0.26	0.39	0.6	1.06		dB/m

Electrical Specification Notes:

Insertion Loss does not include the loss of the connectors. Insertion Loss is estimated as 0.1 dB for the SMA female connector and 0.2 dB for the SMA male connector.

Mechanical Specifications

Cable Assembly

Weight 0.049 lbs [22.23 g]

Cable

Cable Type PE-SR402FL
Impedance 50 Ohms
Inner Conductor Type Solid
Inner Conductor Material and Plating Copper, Silver
Dielectric Type PTFE
Outer Conductor Material and Plating Tinned Copper Braid
Repeated Minimum Bend Radius 0.625 in [15.88 mm]

Click the following link (or enter part number in "SEARCH" on website) to obtain additional part information including price, inventory and certifications: [SMA Male Right Angle to SMA Female Bulkhead Cable Using PE-SR402FL Coax , LF Solder PE3W09320LF](#)



SMA Male Right Angle to SMA Female Bulkhead
Cable Using PE-SR402FL Coax , LF Solder

RF Cable Assemblies Technical Data Sheet

PE3W09320LF

Connectors

Description	Connector 1	Connector 2
Type	SMA Male Right Angle	SMA Female Bulkhead
Specification	MIL-STD-348A	MIL-STD-348A
Impedance	50 Ohms	50 Ohms
Contact Material and Plating	Brass, Gold	Beryllium Copper, Gold
Contact Plating Specification	50 µin minimum	50 µin minimum
Dielectric Type	PTFE	PTFE
Body Material and Plating	Stainless Steel, Gold	Stainless Steel, Gold
Body Plating Specification	30 µin minimum	30 µin minimum
Coupling Nut Material and Plating	Brass, Nickel	
Coupling Nut Plating Specification	100 µin minimum	
Hex Size	5/16 inch	
Torque	3 in-lbs [0.34 Nm]	

Environmental Specifications

Temperature

Operating Range -55 to +125 deg C

Compliance Certifications (see [product page](#) for current document)

Plotted and Other Data

Notes:

Click the following link (or enter part number in "SEARCH" on website) to obtain additional part information including price, inventory and certifications: [SMA Male Right Angle to SMA Female Bulkhead Cable Using PE-SR402FL Coax , LF Solder PE3W09320LF](#)



SMA Male Right Angle to SMA Female Bulkhead Cable Using PE-SR402FL Coax , LF Solder

RF Cable Assemblies Technical Data Sheet

PE3W09320LF

How to Order

Part Number Configuration:

PE3W09320LF

- **xx**

uu

Unit of Measure:
cm = Centimeters
<blank> = Inches
Length
Base Number

Example: PE3W09320LF-12 = 12 inches long cable
PE3W09320LF-100cm = 100 cm long cable

SMA Male Right Angle to SMA Female Bulkhead Cable Using PE-SR402FL Coax , LF Solder from Pasternack Enterprises has same day shipment for domestic and International orders. Our RF, microwave and millimeter wave products maintain a 99.4% availability and are part of the broadest selection in the industry.

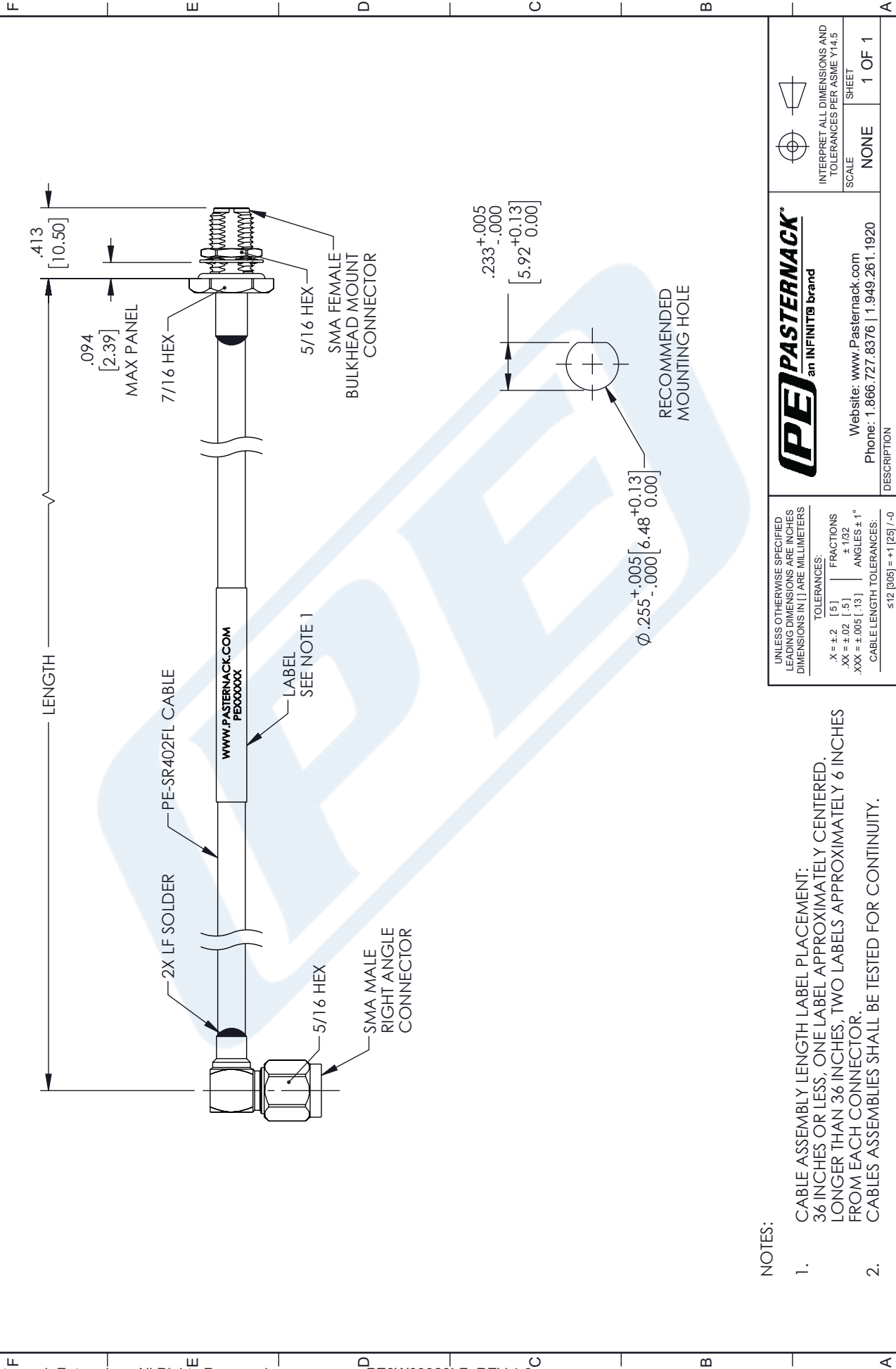
Click the following link (or enter part number in "SEARCH" on website) to obtain additional part information including price, inventory and certifications: [SMA Male Right Angle to SMA Female Bulkhead Cable Using PE-SR402FL Coax , LF Solder PE3W09320LF](#)

URL: <https://www.pasternack.com/sma-male-right-angle-to-sma-female-bulkhead-cable-using-pe-sr402fl-lf-solder-pe3w09320lf-p.aspx>

The information contained in this document is accurate to the best of our knowledge and representative of the part described herein. It may be necessary to make modifications to the part and/or the documentation of the part, in order to implement improvements. Pasternack reserves the right to make such changes as required. Unless otherwise stated, all specifications are nominal. Pasternack does not make any representation or warranty regarding the suitability of the part described herein for any particular purpose, and Pasternack does not assume any liability arising out of the use of any part or documentation.

PE3W09320LF CAD Drawing

SMA Male Right Angle to SMA Female Bulkhead Cable
Using PE-SR402FL Coax , LF Solder



NOTES:

- CABLE ASSEMBLY LENGTH LABEL PLACEMENT:
36 INCHES OR LESS, ONE LABEL APPROXIMATELY CENTERED.
LONGER THAN 36 INCHES, TWO LABELS APPROXIMATELY 6 INCHES
FROM EACH CONNECTOR.
- CABLES ASSEMBLIES SHALL BE TESTED FOR CONTINUITY.

THE INFORMATION CONTAINED IN THIS DRAWING IS THE SOLE PROPERTY OF INFINITE ELECTRONICS, INC. ANY REPRODUCTION IN
PART OR WHOLE WITHOUT THE WRITTEN PERMISSION OF INFINITE ELECTRONICS, INC. IS PROHIBITED.
THESE COMMODITIES, TECHNOLOGY OR SOFTWARE WERE EXPORTED FROM THE UNITED STATES IN ACCORDANCE WITH THE
EXPORT ADMINISTRATION REGULATIONS. DIVERSION CONTRARY TO U.S. LAW PROHIBITED.

Website: www.Pasternack.com Phone: 1.866.727.8376 1.949.261.1920		SCALE: NONE SHEET: 1 OF 1	
DESCRIPTION: SMA MALE RIGHT ANGLE TO SMA FEMALE BULKHEAD CABLE USING PE-SR402FL COAX, LF SOLDER		ITEM NO.: PE3W09320LF	
SIZE: A	CAGE CODE: 53919	DRAWN BY: KGLEBOVA	REV: A

UNLESS OTHERWISE SPECIFIED LEADING DIMENSIONS ARE INCHES DIMENSIONS IN [] ARE MILLIMETERS	
TOLERANCES: .XX = ±.02 [.5] .XXX = ±.005 [.13]	FRACTIONS: ± 1/32 ANGLES ± 1°
CABLE LENGTH TOLERANCES: ≤12 [305] = +1 [25] / -0 >12 [305] ≤ 60 [1524] = +2 [51] / -0 >60 [1524] ≤ 120 [3048] = +4 [102] / -0 >120 [3048] ≤ 300 [7620] = +6 [152] / -0 >300 [7620] = +5% / -0	
ALL DIMENSIONS ARE FOR REFERENCE ONLY AND SUBJECT TO CHANGE WITHOUT NOTICE.	