

SMA Female Bulkhead to SMA Male
Cable Using PE-SR402FL Coax



RF Cable Assemblies Technical Data Sheet

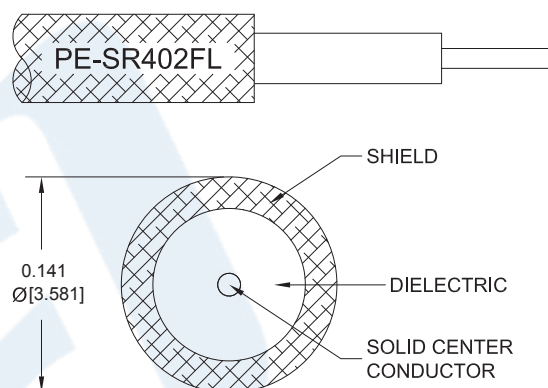
PE3W09339

Configuration

- Connector 1: SMA Female Bulkhead
- Connector 2: SMA Male
- Cable Type: PE-SR402FL

Features

- Max Frequency 6 GHz
- Shielding Effectivity > 110 dB
- 69.5% Phase Velocity



Applications

- General Purpose
- Laboratory Use

Description

Pasternack's PE3W09339 SMA female bulkhead to SMA male cable using PE-SR402FL coax is part of our full line of RF components available for same-day shipping. Pasternack's formable RF cable assemblies provide an alternative to costly pre-formed semi-rigid assemblies since they are hand formable. This Pasternack SMA to SMA cable assembly has a female to male gender configuration with 50 ohm formable PE-SR402FL coax. The PE3W09339 SMA female to SMA male cable assembly operates to 6 GHz. Our RF cable assembly with SMA bulkhead interface allows designers to create external connections on their product enclosures, and can be used in a variety of other rack mount and panel mount applications.

Custom versions of most RF cable assemblies can be built and shipped same day. Custom cable assembly lengths can be obtained by specifying the desired length on the web site at time of order or by contacting a sales representative. Other available RF cable assembly value added services include connector orientation or clocking, heat shrink booting and custom labeling. RF testing can also be performed to document the electrical performance of your cable assembly.

Click the following link (or enter part number in "SEARCH" on website) to obtain additional part information including price, inventory and certifications: [SMA Female Bulkhead to SMA Male Cable Using PE-SR402FL Coax PE3W09339](#)



SMA Female Bulkhead to SMA Male Cable Using PE-SR402FL Coax

RF Cable Assemblies Technical Data Sheet

PE3W09339

Electrical Specifications

Description	Minimum	Typical	Maximum	Units
Frequency Range	DC		6	GHz
VSWR			1.4:1	
Velocity of Propagation		69.5		%
RF Shielding	110			dB
Capacitance		29 [95.14]		pF/ft [pF/m]
DC Resistance Inner Conductor		7.8 [25.59]		Ω /1000ft [Ω /Km]
DC Resistance Outer Conductor		5.5 [18.04]		Ω /1000ft [Ω /Km]

Specifications by Frequency

Description	F1	F2	F3	F4	F5	Units
Frequency	0.25	0.5	1	2.5	6	GHz
Insertion Loss (Typ.)	0.06	0.08	0.12	0.183	0.322	dB/ft
	0.2	0.26	0.39	0.6	1.06	dB/m

Electrical Specification Notes:

Insertion Loss does not include the loss of the connectors. Insertion Loss is estimated as 0.1 dB per connector.

Mechanical Specifications

Cable Assembly

Weight 0.041 lbs [18.6 g]

Cable

Cable Type PE-SR402FL
Impedance 50 Ohms
Inner Conductor Type Solid
Inner Conductor Material and Plating Copper, Silver
Dielectric Type PTFE
Number of Shields 1
Shield Layer 1 Tinned Copper Braid
Repeated Minimum Bend Radius 0.625 in [15.88 mm]

Click the following link (or enter part number in "SEARCH" on website) to obtain additional part information including price, inventory and certifications: [SMA Female Bulkhead to SMA Male Cable Using PE-SR402FL Coax PE3W09339](#)



SMA Female Bulkhead to SMA Male Cable Using PE-SR402FL Coax

RF Cable Assemblies Technical Data Sheet

PE3W09339

Connectors

Description	Connector 1	Connector 2
Type	SMA Female Bulkhead	SMA Male
Specification	MIL-STD-348A	MIL-STD-348A
Impedance	50 Ohms	50 Ohms
Mating Cycles		500
Contact Material and Plating	Beryllium Copper, Gold	
Contact Plating Specification	50 µin minimum	
Dielectric Type	PTFE	
Body Material and Plating	Stainless Steel, Gold	Stainless Steel, Gold
Body Plating Specification	30 µin minimum	
Coupling Nut Material and Plating		Brass, Nickel
Hex Size		5/16 inch
Torque		3 in-lbs [0.34 Nm]

Environmental Specifications

Temperature

Operating Range -55 to +125 deg C

Compliance Certifications (see [product page](#) for current document)

Plotted and Other Data

Notes:

Click the following link (or enter part number in "SEARCH" on website) to obtain additional part information including price, inventory and certifications: [SMA Female Bulkhead to SMA Male Cable Using PE-SR402FL Coax PE3W09339](#)



SMA Female Bulkhead to SMA Male Cable Using PE-SR402FL Coax

RF Cable Assemblies Technical Data Sheet

PE3W09339

How to Order

Part Number Configuration:

PE3W09339

- **xx**

uu

Unit of Measure:
cm = Centimeters
<blank> = Inches
Length
Base Number

Example: PE3W09339-12 = 12 inches long cable
PE3W09339-100cm = 100 cm long cable

SMA Female Bulkhead to SMA Male Cable Using PE-SR402FL Coax from Pasternack Enterprises has same day shipment for domestic and International orders. Our RF, microwave and millimeter wave products maintain a 99.4% availability and are part of the broadest selection in the industry.

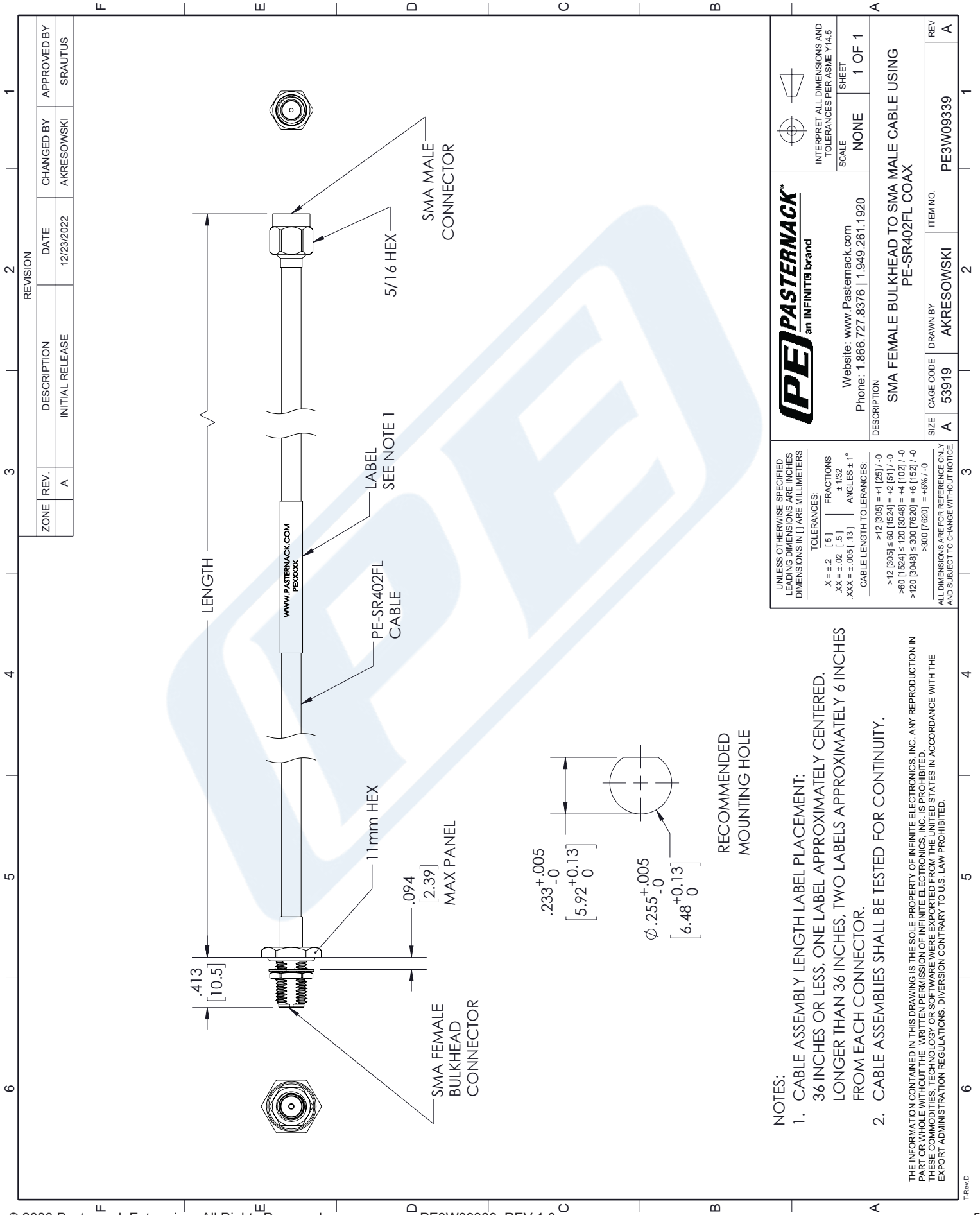
Click the following link (or enter part number in "SEARCH" on website) to obtain additional part information including price, inventory and certifications: [SMA Female Bulkhead to SMA Male Cable Using PE-SR402FL Coax PE3W09339](#)

URL: <https://www.pasternack.com/sma-female-bulkhead-to-sma-male-cable-using-pe-sr402fl-pe3w09339-p.aspx>

The information contained in this document is accurate to the best of our knowledge and representative of the part described herein. It may be necessary to make modifications to the part and/or the documentation of the part, in order to implement improvements. Pasternack reserves the right to make such changes as required. Unless otherwise stated, all specifications are nominal. Pasternack does not make any representation or warranty regarding the suitability of the part described herein for any particular purpose, and Pasternack does not assume any liability arising out of the use of any part or documentation.

PE3W09339 CAD Drawing

SMA Female Bulkhead to SMA Male Cable Using PE-SR402FL Coax



NOTES:

- CABLE ASSEMBLY LENGTH LABEL PLACEMENT:
36 INCHES OR LESS, ONE LABEL APPROXIMATELY CENTERED.
LONGER THAN 36 INCHES, TWO LABELS APPROXIMATELY 6 INCHES FROM EACH CONNECTOR.
- CABLE ASSEMBLIES SHALL BE TESTED FOR CONTINUITY.

THE INFORMATION CONTAINED IN THIS DRAWING IS THE SOLE PROPERTY OF INFINITE ELECTRONICS, INC. ANY REPRODUCTION IN PART OR WHOLE WITHOUT THE WRITTEN PERMISSION OF INFINITE ELECTRONICS, INC. IS PROHIBITED. THESE COMMODITIES, TECHNOLOGY OR SOFTWARE WERE EXPORTED FROM THE UNITED STATES IN ACCORDANCE WITH THE EXPORT ADMINISTRATION REGULATIONS. DIVERSION CONTRARY TO U.S. LAW PROHIBITED.

UNLESS OTHERWISE SPECIFIED LEADING DIMENSIONS ARE INCHES DIMENSIONS IN [] ARE MILLIMETERS	
TOLERANCES:	FRACTIONS
X = ± .2	[.5]
.XX = ± .02	[.5]
.XXX = ± .005	[.13]
CABLE LENGTH TOLERANCES:	
>12 [305] = ±1 [25] / -0	
>60 [1524] = ±2 [51] / -0	
>120 [3048] = ±4 [102] / -0	
>300 [7620] = ±8 [152] / -0	
>600 [15240] = ±16 [305] / -0	
ALL DIMENSIONS ARE FOR REFERENCE ONLY AND SUBJECT TO CHANGE WITHOUT NOTICE	

PE PASTERNAK an INFINITI [®] brand	
Website: www.Pasternack.com Phone: 1.866.727.8376 1.949.261.1920	
DESCRIPTION SMA FEMALE BULKHEAD TO SMA MALE CABLE USING PE-SR402FL COAX	
SCALE NONE	SHEET 1 OF 1
INTERPRET ALL DIMENSIONS AND TOLERANCES PER ASME Y14.5	

T-Rev 0