

2.4mm Male to Mini SMP Female Cable Using PE-SR405AL Coax



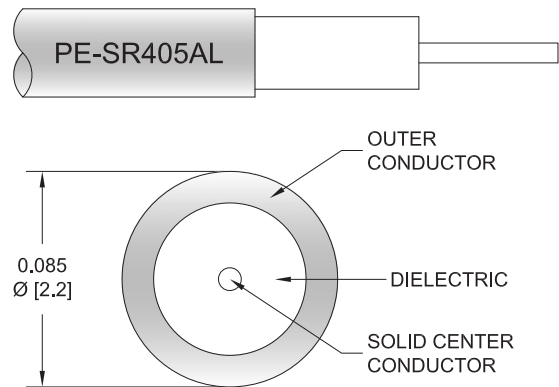
PE3W09564

Configuration

- Connector 1: 2.4mm Male
- Connector 2: Mini SMP Female
- Cable Type: PE-SR405AL
- Coax Flex Type: Semi-Rigid

Features

- Max Frequency 26.5 GHz



Applications

- General Purpose
- Laboratory Use

Description

Pasternack's PE3W09564 2.4mm male to Mini SMP female cable using PE-SR405AL coax is part of our full line of RF components available for same-day shipping. Pasternack's semi-rigid RF cable assemblies are ideal for high performance applications and can be formed, using proper tooling, to the routing pattern required. This Pasternack 2.4mm to Mini SMP cable assembly has a male to female gender configuration with 50 ohm semi-rigid PE-SR405AL coax. The PE3W09564 2.4mm male to Mini SMP female cable assembly operates to 26.5 GHz.

Custom versions of most RF cable assemblies can be built and shipped same day. Custom cable assembly lengths can be obtained by specifying the desired length on the web site at time of order or by contacting a sales representative. Other available RF cable assembly value added services include connector orientation or clocking, heat shrink booting and custom labeling. RF testing can also be performed to document the electrical performance of your cable assembly.

Electrical Specifications

Description	Minimum	Typical	Maximum	Units
Frequency Range	DC		26.5	
VSWR			1.4:1	

Specifications by Frequency

2.4mm Male to Mini SMP Female Cable Using PE-SR405AL Coax



PE3W09564

Part Number	Length	Description	F1	F2	F3	F4	F5	Units	Weight (lbs)
		Frequency	1000	2000	4500	9000	20000	MHz	
PE3W09564	Custom Lengths Available	Insertion Loss (Typ.)	0.23	0.29	0.45	0.74	1.31	dB/ft	
			0.76	0.96	1.48	2.43	4.3	dB/m	
PE3W09564-6	6 inch	Insertion Loss (Typ.)	0.22	0.29	0.44	0.67	1.11	dB	0.562
PE3W09564-12	12 inch	Insertion Loss (Typ.)	0.33	0.44	0.67	1.04	1.76	dB	0.569
PE3W09564-18	18 inch	Insertion Loss (Typ.)	0.45	0.58	0.89	1.41	2.42	dB	0.577
PE3W09564-24	24 inch	Insertion Loss (Typ.)	0.56	0.73	1.12	1.78	3.07	dB	0.584
PE3W09564-36	36 inch	Insertion Loss (Typ.)	0.79	1.02	1.57	2.52	4.38	dB	0.598

The insertion loss data for the base model does not include loss due to the connectors. Each length includes insertion loss due to the connectors.

Loss due to Connector 1: 0.05 x sqrt(fGHz) dB

Loss due to Connector 2: 0.1 dB

Base Weight: 0.569 pounds

Additional Weight per Inch: 0.00117 pounds

Mechanical Specifications

Cable Assembly

Weight 0.569 lbs [258.09 g]

Cable

Cable Type	PE-SR405AL
Impedance	50 Ohms
Inner Conductor Type	Solid
Inner Conductor Material and Plating	Copper Clad Steel, Silver
Dielectric Type	PTFE
Number of Shields	1
Outer Conductor 1 Material and Plating	Tinned Aluminum
One Time Minimum Bend Radius	0.05 in [1.27 mm]

2.4mm Male to Mini SMP Female Cable Using PE-SR405AL Coax



PE3W09564

Connectors

Description	Connector 1	Connector 2
Type	2.4mm Male	Mini SMP Female
Impedance	50 Ohms	50 Ohms
Configuration	Straight	Straight
Mating Cycles	500	
Contact Material and Plating	Beryllium Copper, Gold over Nickel	Beryllium Copper, Gold
Contact Plating Specification	MIL-G-45204	MIL-G-45204
Dielectric Type	PPO	PTFE
Body Material and Plating	Passivated Stainless Steel	Beryllium Copper, Gold
Body Plating Specification	ASTM-A380	MIL-G-45204
Coupling Nut Material and Plating	Passivated Stainless Steel	
Coupling Nut Plating Specification	ASTM-A380	
Hex Size	5/16 inch	
Torque	8 in-lbs 0.9 Nm	

Environmental Specifications

Operating Range Temperature -55 to +100 deg C

Compliance Certifications (see [product page](#) for current document)

Plotted and Other Data

Notes:

2.4mm Male to Mini SMP Female Cable Using PE-SR405AL Coax



PE3W09564

Typical Performance Data

How to Order

Part Number Configuration: **PE3W09564** **- xx** **uu**

Unit of Measure:
cm = Centimeters
<blank> = Inches

Length

Base Number

Example: PE3W09564-12 = 12 inches long cable
PE3W09564-100cm = 100 cm long cable

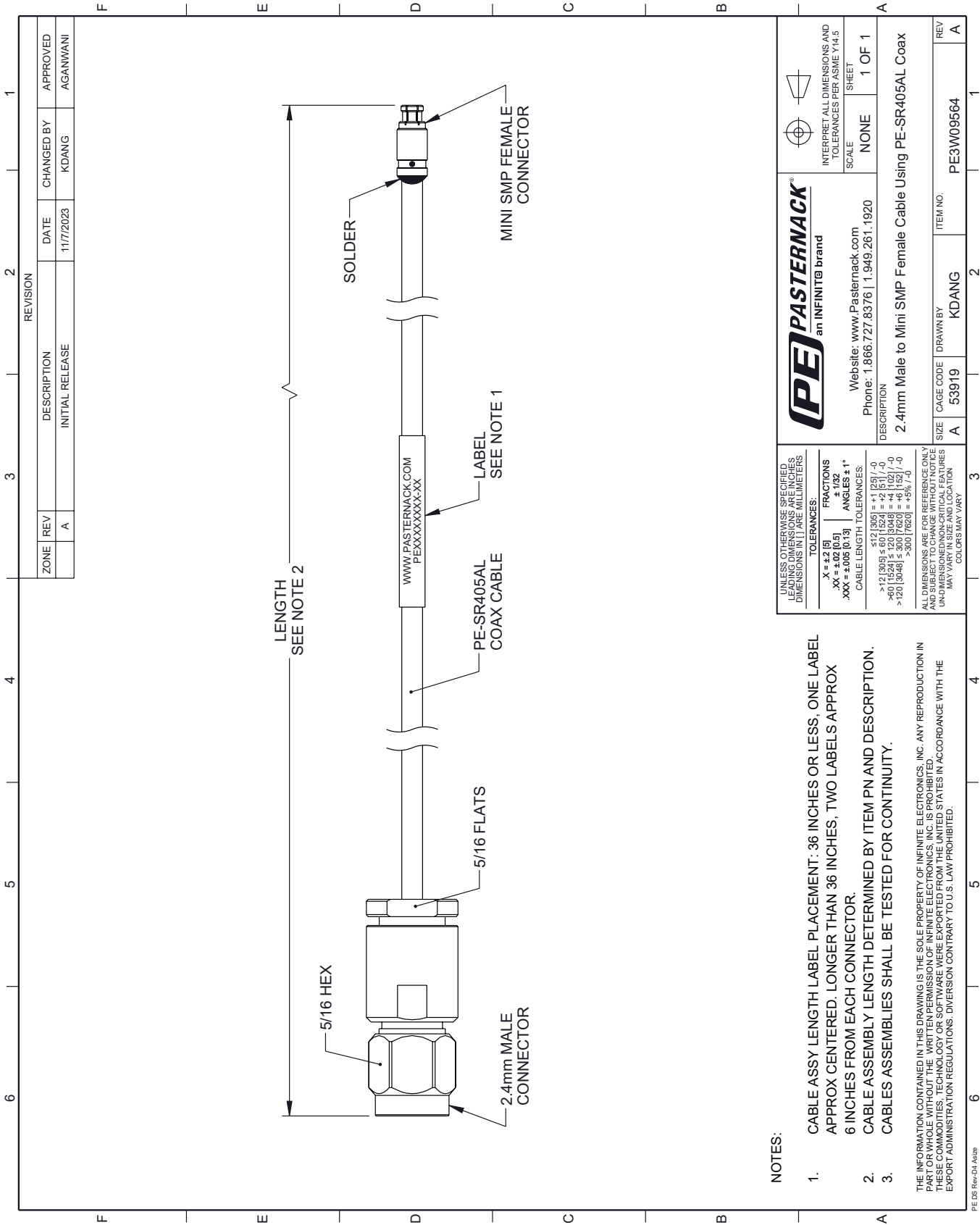
2.4mm Male to Mini SMP Female Cable Using PE-SR405AL Coax from Pasternack Enterprises has same day shipment for domestic and International orders. Our RF, microwave and millimeter wave products maintain a 99.4% availability and are part of the broadest selection in the industry.

Click the following link (or enter part number in "SEARCH" on website) to obtain additional part information including price, inventory and certifications: [2.4mm Male to Mini SMP Female Cable Using PE-SR405AL Coax PE3W09564](https://www.pasternack.com/2.4mm-male-to-mini-smp-female-cable-using-pe-sr405al-pe3w09564-p.aspx)

URL: <https://www.pasternack.com/2.4mm-male-to-mini-smp-female-cable-using-pe-sr405al-pe3w09564-p.aspx>

The information contained within this document is accurate to the best of our knowledge and representative of the part described herein. It may be necessary to make modifications to the part and/or the documentation of the part in order to implement improvements. Pasternack Enterprises reserves the right to make such changes as required. Unless otherwise stated, all specifications are nominal. Pasternack Enterprises does not make any representation or warranty regarding the suitability of the part described herein for any particular purpose, and Pasternack Enterprises does not assume liability arising out of the use of any part or document.

PE3W09564 CAD Drawing
2.4mm Male to Mini SMP Female Cable Using PE-SR405AL Coax



NOTES:

- 1. CABLE ASSY LENGTH LABEL PLACEMENT: 36 INCHES OR LESS, ONE LABEL APPROX CENTERED. LONGER THAN 36 INCHES, TWO LABELS APPROX 6 INCHES FROM EACH CONNECTOR.
- 2. CABLE ASSEMBLY LENGTH DETERMINED BY ITEM PN AND DESCRIPTION.
- 3. CABLES ASSEMBLIES SHALL BE TESTED FOR CONTINUITY.

THE INFORMATION CONTAINED IN THIS DRAWING IS THE SOLE PROPERTY OF INFINITE ELECTRONICS, INC. ANY REPRODUCTION IN PART OR WHOLE WITHOUT THE WRITTEN PERMISSION OF INFINITE ELECTRONICS, INC. IS PROHIBITED. THESE COMMODITIES, TECHNOLOGY OR SOFTWARE WERE EXPORTED FROM THE UNITED STATES IN ACCORDANCE WITH THE EXPORT ADMINISTRATION REGULATIONS. DIVERSION CONTRARY TO U.S. LAW PROHIBITED.