



75 Ohm F Male to 75 Ohm F Male Cable
Using 75 Ohm RG179 Coax

RF Cable Assemblies Technical Data Sheet

PE3W09571

Configuration

- Connector 1: F Male
- Connector 2: F Male
- Cable Type: RG179

Features

- Max Frequency 1 GHz
- 70% Phase Velocity
- FEP Jacket

Applications

- General Purpose
- Laboratory Use

Description

Pasternack's PE3W09571 75 ohm type F male to 75 ohm type F male cable using 75 ohm RG179 coax is part of our full line of RF components available for same-day shipping. Pasternack's flexible RF cable assemblies are ideal for applications where tight bends and flexure are required. This Pasternack type F to type F cable assembly has a male to male gender configuration with 75 ohm flexible RG179 coax. The PE3W09571 type F male to type F male cable assembly operates to 1 GHz.

Custom versions of most RF cable assemblies can be built and shipped same day. Custom cable assembly lengths can be obtained by specifying the desired length on the web site at time of order or by contacting a sales representative. Other available RF cable assembly value added services include connector orientation or clocking, heat shrink booting and custom labeling. RF testing can also be performed to document the electrical performance of your cable assembly.

Click the following link (or enter part number in "SEARCH" on website) to obtain additional part information including price, inventory and certifications: [75 Ohm F Male to 75 Ohm F Male Cable Using 75 Ohm RG179 Coax PE3W09571](#)



75 Ohm F Male to 75 Ohm F Male Cable
Using 75 Ohm RG179 Coax

RF Cable Assemblies Technical Data Sheet

PE3W09571

Electrical Specifications

Description	Minimum	Typical	Maximum	Units
Frequency Range	DC		1,000	MHz
VSWR			1.4:1	
Velocity of Propagation		70		%
Capacitance		19.4 [63.65]		pF/ft [pF/m]
Operating Voltage (AC)			500	Vrms

Specifications by Frequency

Description	F1	F2	F3	F4	F5	Units
Frequency	50	100	250	500	1,000	MHz
Insertion Loss (Typ.)	0.045	0.091	0.137	0.203	0.3	dB/ft
	0.15	0.3	0.45	0.67	0.98	dB/m

Electrical Specification Notes:

Insertion Loss does not include the loss of the connectors. Insertion Loss is estimated as 0.1 dB per connector.

Mechanical Specifications

Cable Assembly

Weight 0.03 lbs [13.61 g]

Cable

Cable Type RG179
 Impedance 75 Ohms
 Inner Conductor Type Stranded
 Inner Conductor Material and Plating Copper Clad Steel, Silver
 Dielectric Type PTFE
 Number of Shields 1
 Shield Layer 1 Silver Plated Copper Braid
 Jacket Material FEP, Tan
 Jacket Diameter 0.1 in [2.54 mm]

Repeated Minimum Bend Radius 0.4 in [10.16 mm]

Click the following link (or enter part number in "SEARCH" on website) to obtain additional part information including price, inventory and certifications: [75 Ohm F Male to 75 Ohm F Male Cable Using 75 Ohm RG179 Coax PE3W09571](#)



75 Ohm F Male to 75 Ohm F Male Cable
Using 75 Ohm RG179 Coax

RF Cable Assemblies Technical Data Sheet

PE3W09571

Connectors

Description	Connector 1	Connector 2
Type	F Male	F Male
Impedance	75 Ohms	75 Ohms
Contact Material and Plating	Brass, Gold	Brass, Gold
Dielectric Type	PTFE	PTFE
Body Material and Plating	Brass, Nickel	Brass, Nickel
Coupling Nut Material and Plating	Brass, Nickel	Brass, Nickel
Hex Size	7/16 inch	7/16 inch
Torque	12 in-lbs [1.36 Nm]	12 in-lbs [1.36 Nm]

Environmental Specifications

Temperature

Operating Range

-55 to +200 deg C

Compliance Certifications (see [product page](#) for current document)

Plotted and Other Data

Notes:

Click the following link (or enter part number in "SEARCH" on website) to obtain additional part information including price, inventory and certifications: [75 Ohm F Male to 75 Ohm F Male Cable Using 75 Ohm RG179 Coax PE3W09571](#)



75 Ohm F Male to 75 Ohm F Male Cable
Using 75 Ohm RG179 Coax

RF Cable Assemblies Technical Data Sheet

PE3W09571

How to Order

Part Number Configuration:

PE3W09571

- **xx**

uu

Unit of Measure:
cm = Centimeters
<blank> = Inches
Length
Base Number

Example: PE3W09571-12 = 12 inches long cable
PE3W09571-100cm = 100 cm long cable

75 Ohm F Male to 75 Ohm F Male Cable Using 75 Ohm RG179 Coax from Pasternack Enterprises has same day shipment for domestic and International orders. Our RF, microwave and millimeter wave products maintain a 99.4% availability and are part of the broadest selection in the industry.

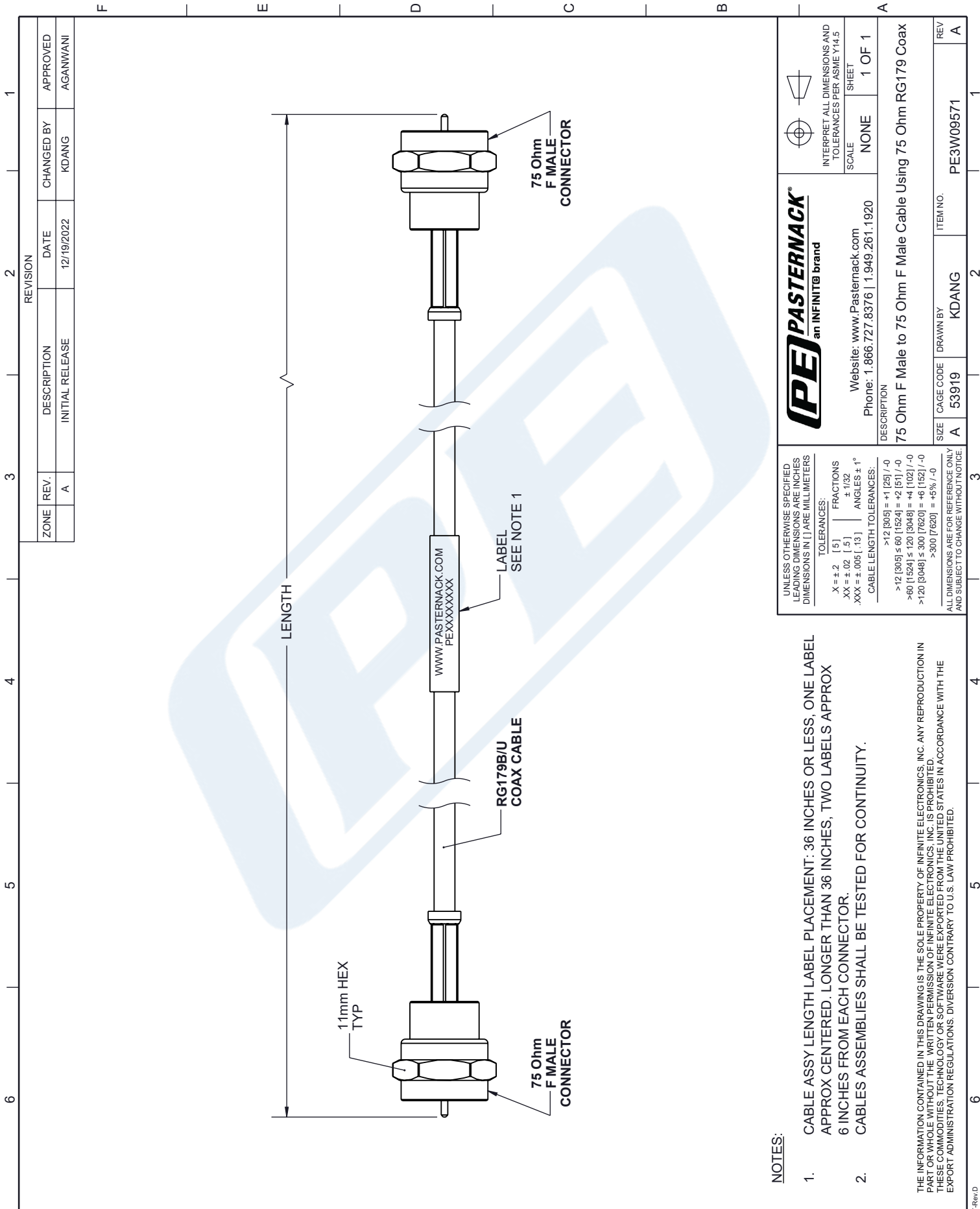
Click the following link (or enter part number in "SEARCH" on website) to obtain additional part information including price, inventory and certifications: [75 Ohm F Male to 75 Ohm F Male Cable Using 75 Ohm RG179 Coax PE3W09571](https://www.pasternack.com/75-ohm-f-male-to-75-ohm-f-male-cable-using-rg179-pe3w09571-p.aspx)

URL: <https://www.pasternack.com/75-ohm-f-male-to-75-ohm-f-male-cable-using-rg179-pe3w09571-p.aspx>

The information contained in this document is accurate to the best of our knowledge and representative of the part described herein. It may be necessary to make modifications to the part and/or the documentation of the part, in order to implement improvements. Pasternack reserves the right to make such changes as required. Unless otherwise stated, all specifications are nominal. Pasternack does not make any representation or warranty regarding the suitability of the part described herein for any particular purpose, and Pasternack does not assume any liability arising out of the use of any part or documentation.

PE3W09571 CAD Drawing

75 Ohm F Male to 75 Ohm F Male Cable Using 75 Ohm RG179 Coax



ZONE		REVISION		CHANGED BY		APPROVED	
A	REV. A	INITIAL RELEASE	DATE	KDANG	AGANWANI	12/19/2022	

PASTERNAK an INFINITE brand	Website: www.Pasternack.com Phone: 1.866.727.8376 1.949.261.1920	INTERPRET ALL DIMENSIONS AND TOLERANCES PER ASME Y14.5 SCALE: NONE SHEET: 1 OF 1
	DESCRIPTION 75 Ohm F Male to 75 Ohm F Male Cable Using 75 Ohm RG179 Coax	
SIZE: A CAGE CODE: 53919 DRAWN BY: KDANG ITEM NO.: PE3W09571	REV: A	

NOTES:

- CABLE ASSY LENGTH LABEL PLACEMENT: 36 INCHES OR LESS, ONE LABEL APPROX CENTERED. LONGER THAN 36 INCHES, TWO LABELS APPROX 6 INCHES FROM EACH CONNECTOR.
- CABLES ASSEMBLIES SHALL BE TESTED FOR CONTINUITY.

UNLESS OTHERWISE SPECIFIED LEADING DIMENSIONS ARE INCHES DIMENSIONS IN [] ARE MILLIMETERS

TOLERANCES:
 X = ±.2 [5] FRACTIONS ± 1/32
 .XX = ±.02 [5] ANGLES ± 1°
 .XXX = ±.005 [13] CABLE LENGTH TOLERANCES:
 >12 [305] = +1 [25] / -0
 >12 [305] ≤ 60 [1524] = -2 [51] / -0
 >60 [1524] ≤ 120 [3048] = +4 [102] / -0
 >120 [3048] ≤ 300 [7620] = +6 [152] / -0
 >300 [7620] = +5% / -0

ALL DIMENSIONS ARE FOR REFERENCE ONLY AND SUBJECT TO CHANGE WITHOUT NOTICE

THE INFORMATION CONTAINED IN THIS DRAWING IS THE SOLE PROPERTY OF INFINITE ELECTRONICS, INC. ANY REPRODUCTION IN PART OR WHOLE WITHOUT THE WRITTEN PERMISSION OF INFINITE ELECTRONICS, INC. IS PROHIBITED. THESE COMMODITIES, TECHNOLOGY OR SOFTWARE WERE EXPORTED FROM THE UNITED STATES IN ACCORDANCE WITH THE EXPORT ADMINISTRATION REGULATIONS. DIVERSION CONTRARY TO U.S. LAW PROHIBITED.