



SMC Jack to SMA Female Cable Using RG188 Coax

RF Cable Assemblies Technical Data Sheet

PE3W09794

Configuration

- Connector 1: SMC Jack
- Connector 2: SMA Female
- Cable Type: RG188

Features

- Max Frequency 3 GHz
- PTFE Jacket

Applications

- General Purpose
- Laboratory Use

Description

Pasternack's PE3W09794 SMC jack to SMA female cable using RG188 coax is part of our full line of RF components available for same-day shipping. Pasternack's flexible RF cable assemblies are ideal for applications where tight bends and flexure are required. This Pasternack SMC to SMA cable assembly has a jack to female gender configuration with 50 ohm flexible RG188 coax. The PE3W09794 SMC jack to SMA female cable assembly operates to 3 GHz.

Custom versions of most RF cable assemblies can be built and shipped same day. Custom cable assembly lengths can be obtained by specifying the desired length on the web site at time of order or by contacting a sales representative. Other available RF cable assembly value added services include connector orientation or clocking, heat shrink booting and custom labeling. RF testing can also be performed to document the electrical performance of your cable assembly.

Electrical Specifications

Description	Minimum	Typical	Maximum	Units
Frequency Range	DC		3	GHz
VSWR			1.4:1	

Specifications by Frequency

Description	F1	F2	F3	F4	F5	Units
Frequency	400					MHz
Insertion Loss (Typ.)	0.2					dB/ft
	0.66					dB/m

Electrical Specification Notes:

Insertion Loss does not include the loss of the connectors. Insertion Loss is estimated as 0.1 dB per connector.

Click the following link (or enter part number in "SEARCH" on website) to obtain additional part information including price, inventory and certifications: [SMC Jack to SMA Female Cable Using RG188 Coax PE3W09794](#)



SMC Jack to SMA Female Cable Using RG188 Coax

RF Cable Assemblies Technical Data Sheet

PE3W09794

Mechanical Specifications

Cable Assembly

Weight 0.029 lbs [13.15 g]

Cable

Cable Type RG188
Impedance 50 Ohms
Inner Conductor Type Stranded
Inner Conductor Material and Plating Copper Clad Steel, Silver
Dielectric Type PTFE
Number of Shields 1
Shield Layer 1 Silver Plated Copper Braid
Jacket Material PTFE, White
Jacket Diameter 0.11 in [2.79 mm]

Connectors

Description	Connector 1	Connector 2
Type	SMC Jack	SMA Female
Specification	MIL-C-39012	MIL-STD-348
Impedance	50 Ohms	50 Ohms
Mating Cycles		100
Contact Material and Plating	Brass, Gold	Beryllium Copper, Gold
Contact Plating Specification	30 µin minimum	
Dielectric Type	PTFE	PTFE
Outer Conductor Material and Plating		Brass, Nickel
Body Material and Plating	Brass, Nickel	Brass, Nickel
Body Plating Specification	100 µin minimum	

Compliance Certifications (see [product page](#) for current document)

Plotted and Other Data

Notes:

Click the following link (or enter part number in "SEARCH" on website) to obtain additional part information including price, inventory and certifications: [SMC Jack to SMA Female Cable Using RG188 Coax PE3W09794](#)



SMC Jack to SMA Female Cable Using RG188 Coax

RF Cable Assemblies Technical Data Sheet

PE3W09794

How to Order

Part Number Configuration:

PE3W09794

- xx

uu

Unit of Measure:
cm = Centimeters
<blank> = Inches
Length
Base Number

Example: PE3W09794-12 = 12 inches long cable
PE3W09794-100cm = 100 cm long cable

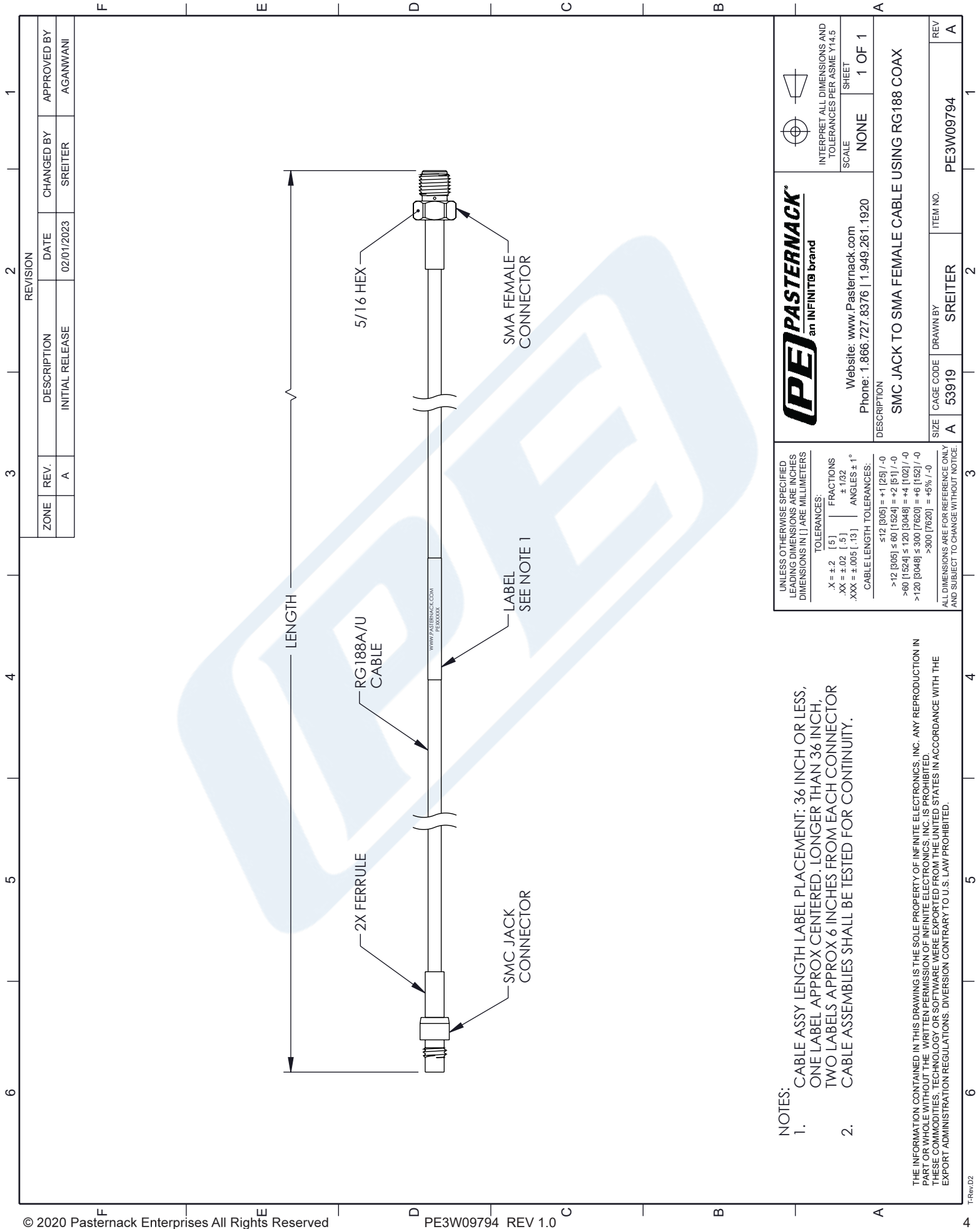
SMC Jack to SMA Female Cable Using RG188 Coax from Pasternack Enterprises has same day shipment for domestic and International orders. Our RF, microwave and millimeter wave products maintain a 99.4% availability and are part of the broadest selection in the industry.

Click the following link (or enter part number in "SEARCH" on website) to obtain additional part information including price, inventory and certifications: [SMC Jack to SMA Female Cable Using RG188 Coax PE3W09794](https://www.pasternack.com/smc-jack-to-sma-female-cable-using-rg188-pe3w09794-p.aspx)

URL: <https://www.pasternack.com/smc-jack-to-sma-female-cable-using-rg188-pe3w09794-p.aspx>



The information contained in this document is accurate to the best of our knowledge and representative of the part described herein. It may be necessary to make modifications to the part and/or the documentation of the part, in order to implement improvements. Pasternack reserves the right to make such changes as required. Unless otherwise stated, all specifications are nominal. Pasternack does not make any representation or warranty regarding the suitability of the part described herein for any particular purpose, and Pasternack does not assume any liability arising out of the use of any part or documentation.

PE3W09794 CAD Drawing
SMC Jack to SMA Female Cable Using RG188 Coax



NOTES:

- CABLE ASSY LENGTH LABEL PLACEMENT: 36 INCH OR LESS, ONE LABEL APPROX CENTERED. LONGER THAN 36 INCH, TWO LABELS APPROX 6 INCHES FROM EACH CONNECTOR. CABLE ASSEMBLIES SHALL BE TESTED FOR CONTINUITY.
- THE INFORMATION CONTAINED IN THIS DRAWING IS THE SOLE PROPERTY OF INFINITE ELECTRONICS, INC. ANY REPRODUCTION IN PART OR WHOLE WITHOUT THE WRITTEN PERMISSION OF INFINITE ELECTRONICS, INC. IS PROHIBITED. THESE COMMODITIES, TECHNOLOGY OR SOFTWARE WERE EXPORTED FROM THE UNITED STATES IN ACCORDANCE WITH THE EXPORT ADMINISTRATION REGULATIONS. DIVERSION CONTRARY TO U.S. LAW PROHIBITED.

UNLESS OTHERWISE SPECIFIED LEADING DIMENSIONS ARE INCHES DIMENSIONS IN [] ARE MILLIMETERS		 PASTERNAK an INFINITE brand			
TOLERANCES: X = ±.2 [.5] FRACTIONS .XX = ±.02 [.5] ±.1/32 .XXX = ±.005 [.13] ANGLES ± 1°		Website: www.Pasternack.com Phone: 1.866.727.8376 1.949.261.1920		INTERPRET ALL DIMENSIONS AND TOLERANCES PER ASME Y14.5 SCALE NONE SHEET 1 OF 1	
CABLE LENGTH TOLERANCES: ≤12 [305] = ±.1 [25] / -0 >12 [305] ≤ 60 [1524] = ±.2 [51] / -0 >60 [1524] ≤ 120 [3048] = ±.4 [102] / -0 >120 [3048] ≤ 300 [7620] = ±.6 [152] / -0 >300 [7620] = ±.5% / -0		DESCRIPTION SMC JACK TO SMA FEMALE CABLE USING RG188 COAX			
ALL DIMENSIONS ARE FOR REFERENCE ONLY AND SUBJECT TO CHANGE WITHOUT NOTICE.		SIZE A CAGE CODE 53919 DRAWN BY SREITER ITEM NO. PE3W09794		REV A	