



SSMB Plug Right Angle to SMA Male
Right Angle Cable Using RG316 Coax

RF Cable Assemblies Technical Data Sheet

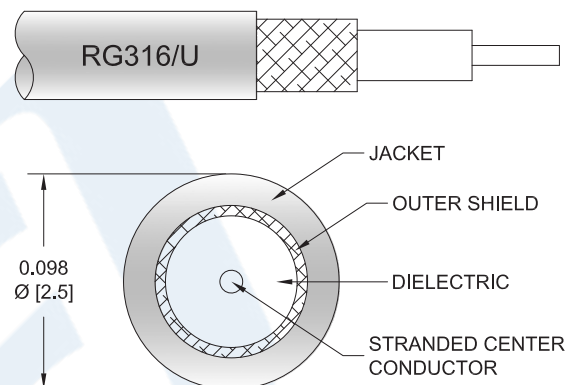
PE3W10455

Configuration

- Connector 1: SSMB Plug Right Angle
- Connector 2: SMA Male Right Angle
- Cable Type: RG316

Features

- 69% Phase Velocity
- FEP Jacket



Applications

- General Purpose
- Laboratory Use

Description

Pasternack's PE3W10455 SSMB plug right angle to SMA male right angle cable using RG316 coax is part of our full line of RF components available for same-day shipping. Pasternack's flexible RF cable assemblies are ideal for applications where tight bends and flexure are required. This Pasternack SSMB to SMA cable assembly has a plug to male gender configuration with 50 ohm flexible RG316 coax. The right angle SSMB and right angle SMA interfaces on the RG316 cable allow for easier connections in tight spaces.

Custom versions of most RF cable assemblies can be built and shipped same day. Custom cable assembly lengths can be obtained by specifying the desired length on the web site at time of order or by contacting a sales representative. Other available RF cable assembly value added services include connector orientation or clocking, heat shrink booting and custom labeling. RF testing can also be performed to document the electrical performance of your cable assembly.

Electrical Specifications

Description	Minimum	Typical	Maximum	Units
Velocity of Propagation		69		%
Jacket Spark			2,000	Vrms

Mechanical Specifications

Cable Assembly

Weight 0.03 lbs [13.61 g]

Click the following link (or enter part number in "SEARCH" on website) to obtain additional part information including price, inventory and certifications: [SSMB Plug Right Angle to SMA Male Right Angle Cable Using RG316 Coax PE3W10455](#)



SSMB Plug Right Angle to SMA Male
Right Angle Cable Using RG316 Coax

RF Cable Assemblies Technical Data Sheet

PE3W10455

Cable

Cable Type	RG316
Impedance	50 Ohms
Inner Conductor Type	Stranded
Inner Conductor Material and Plating	Copper Clad Steel, Silver
Dielectric Type	PTFE
Number of Shields	1
Shield Layer 1	Silver Plated Copper Braid
Jacket Material	FEP, Tan
Jacket Diameter	0.102 in [2.59 mm]

Connectors

Description	Connector 1	Connector 2
Type	SSMB Plug Right Angle	SMA Male Right Angle
Specification	MIL-STD-348	
Impedance	50 Ohms	50 Ohms
Contact Material and Plating	Gold	Brass, Gold
Contact Plating Specification	MIL-G-45204	
Dielectric Type	PTFE	Teflon
Body Material and Plating	Brass, Gold	Brass, Gold
Body Plating Specification	MIL-G-45204	
Coupling Nut Material and Plating		Brass, Gold
Hex Size		16-May in
Torque		5 in-lbs [0.57 Nm]

Environmental Specifications

Temperature

Operating Range -55 to +165 deg C

Compliance Certifications (see [product page](#) for current document)

Plotted and Other Data

Notes:

Click the following link (or enter part number in "SEARCH" on website) to obtain additional part information including price, inventory and certifications: [SSMB Plug Right Angle to SMA Male Right Angle Cable Using RG316 Coax PE3W10455](#)



SSMB Plug Right Angle to SMA Male Right Angle Cable Using RG316 Coax

RF Cable Assemblies Technical Data Sheet

PE3W10455

How to Order

Part Number Configuration:

PE3W10455

- **xx**

uu

Unit of Measure:

cm = Centimeters

<blank> = Inches

Length

Base Number

Example: PE3W10455-12 = 12 inches long cable
 PE3W10455-100cm = 100 cm long cable

SSMB Plug Right Angle to SMA Male Right Angle Cable Using RG316 Coax from Pasternack Enterprises has same day shipment for domestic and International orders. Our RF, microwave and millimeter wave products maintain a 99.4% availability and are part of the broadest selection in the industry.

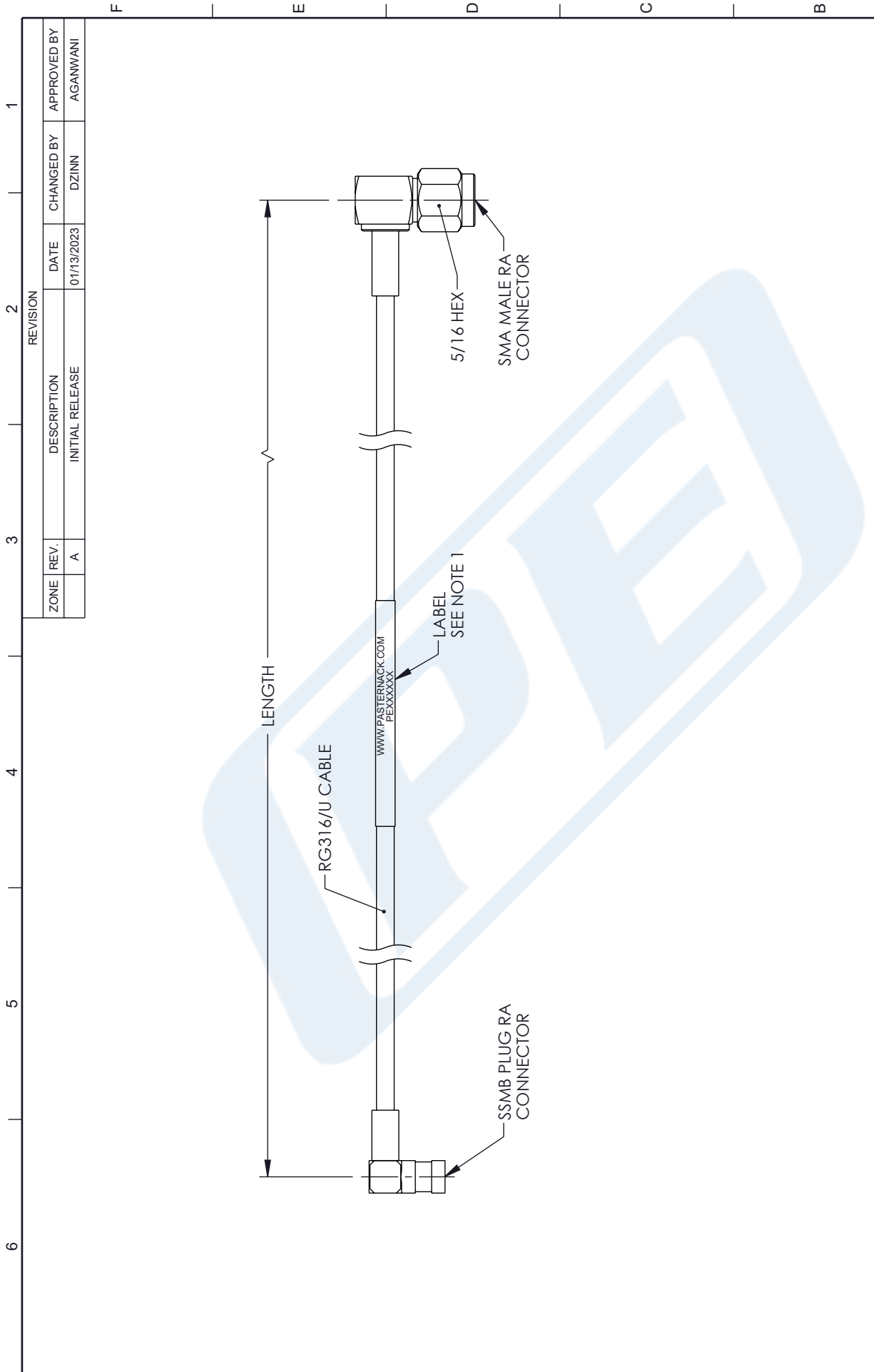
Click the following link (or enter part number in "SEARCH" on website) to obtain additional part information including price, inventory and certifications: [SSMB Plug Right Angle to SMA Male Right Angle Cable Using RG316 Coax PE3W10455](https://www.pasternack.com/ssmb-plug-right-angle-to-sma-male-right-angle-cable-using-rg316-coax-pe3w10455-p.aspx)

URL: <https://www.pasternack.com/ssmb-plug-right-angle-to-sma-male-cable-using-rg316-pe3w10455-p.aspx>

The information contained in this document is accurate to the best of our knowledge and representative of the part described herein. It may be necessary to make modifications to the part and/or the documentation of the part, in order to implement improvements. Pasternack reserves the right to make such changes as required. Unless otherwise stated, all specifications are nominal. Pasternack does not make any representation or warranty regarding the suitability of the part described herein for any particular purpose, and Pasternack does not assume any liability arising out of the use of any part or documentation.

PE3W10455 CAD Drawing

SSMB Plug Right Angle to SMA Male Right Angle Cable Using RG316 Coax



		INTERPRET ALL DIMENSIONS AND TOLERANCES PER ASME Y14.5 SCALE: NONE SHEET: 1 OF 1	
Website: www.Pasternack.com Phone: 1.866.727.8376 1.949.261.1920		DESCRIPTION: SSMB PLUG RIGHT ANGLE TO SMA MALE RIGHT ANGLE CABLE USING RG316 COAX	
UNLESS OTHERWISE SPECIFIED LEADING DIMENSIONS ARE INCHES DIMENSIONS IN [] ARE MILLIMETERS TOLERANCES: .X = ±.2 [.5] FRACTIONS ±.1/32 .XX = ±.02 [.5] ANGLES ± 1° .XXX = ±.005 [.13] CABLE LENGTH TOLERANCES: >12 [305] = +1 [25] / -0 >60 [1524] = +2 [51] / -0 >120 [3048] = +4 [102] / -0 >300 [7620] = +6 [152] / -0 >600 [15240] = +8 [203] / -0	CAGE CODE: 53919 DRAWN BY: DZINN ITEM NO.: PE3W10455	ALL DIMENSIONS ARE FOR REFERENCE ONLY AND SUBJECT TO CHANGE WITHOUT NOTICE.	

- NOTES:**
- CABLE ASSEMBLY LENGTH LABEL PLACEMENT: 36 INCHES OR LESS, ONE LABEL APPROXIMATELY CENTERED. LONGER THAN 36 INCHES, TWO LABELS APPROXIMATELY 6 INCHES FROM EACH CONNECTOR.
 - CABLE ASSEMBLIES SHALL BE TESTED FOR CONTINUITY.
- THE INFORMATION CONTAINED IN THIS DRAWING IS THE SOLE PROPERTY OF INFINITE ELECTRONICS, INC. ANY REPRODUCTION IN PART OR WHOLE WITHOUT THE WRITTEN PERMISSION OF INFINITE ELECTRONICS, INC. IS PROHIBITED. THESE COMMODITIES, TECHNOLOGY OR SOFTWARE WERE EXPORTED FROM THE UNITED STATES IN ACCORDANCE WITH THE EXPORT ADMINISTRATION REGULATIONS. DIVERSION CONTRARY TO U.S. LAW PROHIBITED.