



## 3.5mm Male to Slide-On BMA Plug Bulkhead Cable Using Tinned RG405 Coax

### RF Cable Assemblies Technical Data Sheet

**PE3W11276**

#### Configuration

- Connector 1: 3.5mm Male
- Connector 2: Slide-OnBMA Plug Bulkhead
- Cable Type: RG405 Tinned

#### Applications

- General Purpose
- Laboratory Use

#### Description

Pasternack's PE3W11276 3.5mm male to BMA plug slide-on bulkhead cable using tinned RG405 coax is part of our full line of RF components available for same-day shipping. Pasternack's semi-rigid RF cable assemblies are ideal for high performance applications and can be formed, using proper tooling, to the routing pattern required. This Pasternack 3.5mm to BMA cable assembly has a male to plug gender configuration with 50 ohm semi-rigid RG405 tinned coax. Our RF cable assembly with BMA bulkhead interface allows designers to create external connections on their product enclosures, and can be used in a variety of other rack mount and panel mount applications.

Custom versions of most RF cable assemblies can be built and shipped same day. Custom cable assembly lengths can be obtained by specifying the desired length on the web site at time of order or by contacting a sales representative. Other available RF cable assembly value added services include connector orientation or clocking, heat shrink booting and custom labeling. RF testing can also be performed to document the electrical performance of your cable assembly.

#### Mechanical Specifications

##### Cable Assembly

Weight 0.037 lbs [16.78 g]

##### Cable

Cable Type	RG405 Tinned
Impedance	50 Ohms
Inner Conductor Type	Solid
Inner Conductor Material and Plating	Copper Clad Steel, Silver
Dielectric Type	PTFE
Number of Shields	1
Shield Layer 1	Tinned Copper

One Time Minimum Bend Radius 0.05 in [1.27 mm]

Click the following link (or enter part number in "SEARCH" on website) to obtain additional part information including price, inventory and certifications: [3.5mm Male to Slide-On BMA Plug Bulkhead Cable Using Tinned RG405 Coax PE3W11276](#)



## 3.5mm Male to Slide-On BMA Plug Bulkhead Cable Using Tinned RG405 Coax

### RF Cable Assemblies Technical Data Sheet

**PE3W11276**

#### Connectors

Description	Connector 1	Connector 2
Type	3.5mm Male	BMA Plug Bulkhead
Impedance	50 Ohms	50 Ohms
Connection Method		Slide-On
Mating Cycles		1,000
Contact Material and Plating	Beryllium Copper, Gold over Nickel	Bronze, Gold
Contact Plating Specification	50 $\mu$ in minimum	51.18 $\mu$ in. minimum
Dielectric Type	PCTFE	PTFE
Outer Conductor Material and Plating		Brass, Tri-Metal
Outer Conductor Plating Specification		78.74 $\mu$ in. minimum
Body Material and Plating	Passivated Stainless Steel	Brass, Tri-Metal
Body Plating Specification	SAE-AMS-2700	78.74 $\mu$ in. minimum
Coupling Nut Material and Plating	Passivated Stainless Steel	
Coupling Nut Plating Specification	SAE-AMS-2700	
Hex Size	5/16 inch	8 mm
Torque	8 in-lbs [0.9 Nm]	

#### Environmental Specifications

##### Temperature

Operating Range -55 to +125 deg C

**Compliance Certifications** (see [product page](#) for current document)

#### Plotted and Other Data

Notes:

Click the following link (or enter part number in "SEARCH" on website) to obtain additional part information including price, inventory and certifications: [3.5mm Male to Slide-On BMA Plug Bulkhead Cable Using Tinned RG405 Coax PE3W11276](#)



## 3.5mm Male to Slide-On BMA Plug Bulkhead Cable Using Tinned RG405 Coax

### RF Cable Assemblies Technical Data Sheet

**PE3W11276**

#### How to Order

Part Number Configuration:

**PE3W11276**

- **xx**

**uu**

Unit of Measure:  
cm = Centimeters  
<blank> = Inches  
Length  
Base Number

Example: PE3W11276-12 = 12 inches long cable  
PE3W11276-100cm = 100 cm long cable

3.5mm Male to Slide-On BMA Plug Bulkhead Cable Using Tinned RG405 Coax from Pasternack Enterprises has same day shipment for domestic and International orders. Our RF, microwave and millimeter wave products maintain a 99.4% availability and are part of the broadest selection in the industry.

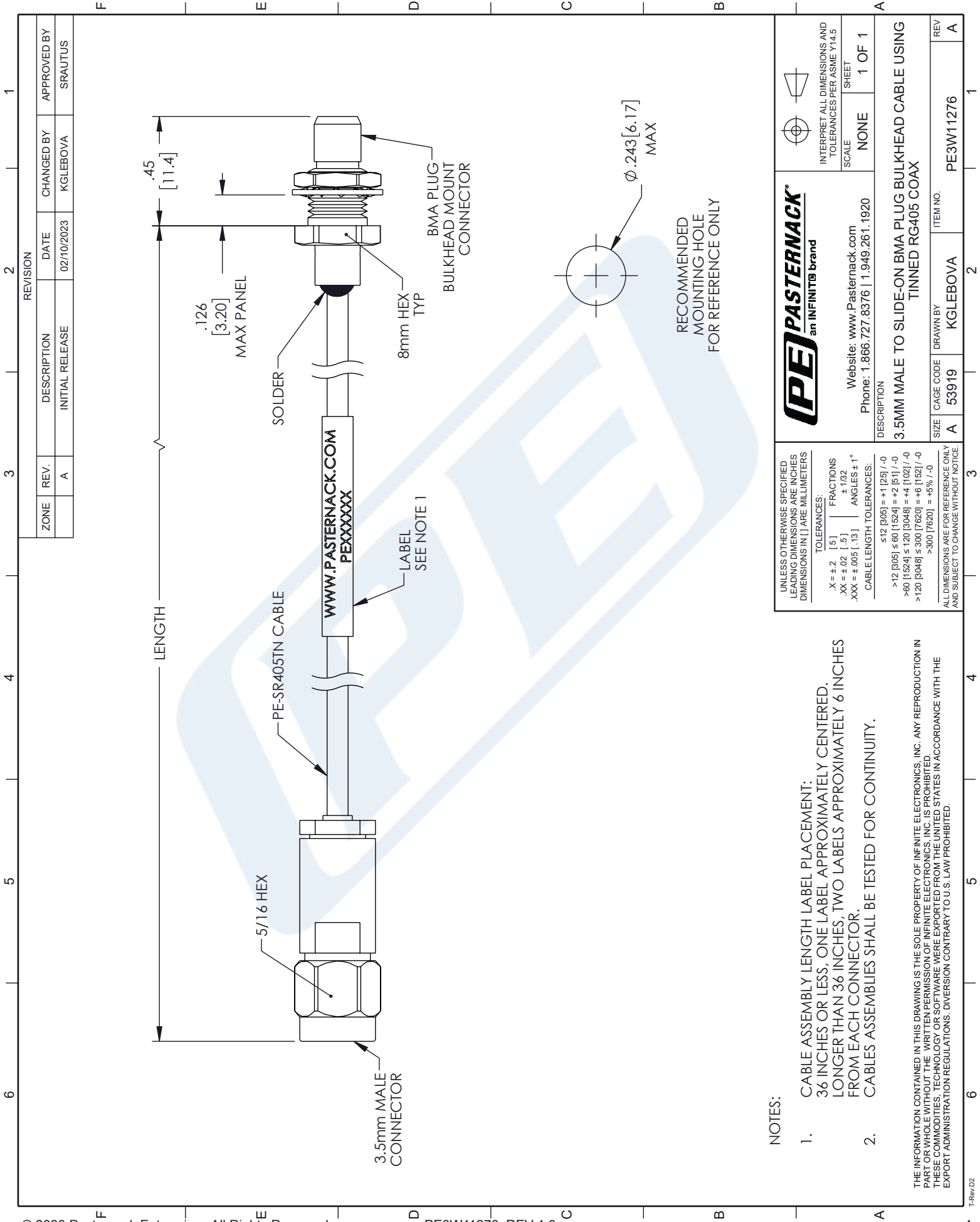
Click the following link (or enter part number in "SEARCH" on website) to obtain additional part information including price, inventory and certifications: [3.5mm Male to Slide-On BMA Plug Bulkhead Cable Using Tinned RG405 Coax PE3W11276](#)

URL: <https://www.pasternack.com/3.5mm-male-to-slide-on-bma-plug-bulkhead-cable-using-tinned-rg405-pe3w11276-p.aspx>

The information contained in this document is accurate to the best of our knowledge and representative of the part described herein. It may be necessary to make modifications to the part and/or the documentation of the part, in order to implement improvements. Pasternack reserves the right to make such changes as required. Unless otherwise stated, all specifications are nominal. Pasternack does not make any representation or warranty regarding the suitability of the part described herein for any particular purpose, and Pasternack does not assume any liability arising out of the use of any part or documentation.

PE3W11276 CAD Drawing


3.5mm Male to Slide-On BMA Plug Bulkhead Cable Using Tinned RG405 Coax



NOTES:

1. CABLE ASSEMBLY LENGTH LABEL PLACEMENT:  
36 INCHES OR LESS, ONE LABEL APPROXIMATELY CENTERED.  
LONGER THAN 36 INCHES, TWO LABELS APPROXIMATELY 6 INCHES FROM EACH CONNECTOR.
2. CABLES ASSEMBLIES SHALL BE TESTED FOR CONTINUITY.

THE INFORMATION CONTAINED IN THIS DRAWING IS THE SOLE PROPERTY OF INFINITE ELECTRONICS, INC. ANY REPRODUCTION IN PART OR WHOLE WITHOUT THE WRITTEN PERMISSION OF INFINITE ELECTRONICS, INC. IS PROHIBITED.  
THESE COMMODITIES, TECHNOLOGY OR SOFTWARE WERE EXPORTED FROM THE UNITED STATES IN ACCORDANCE WITH THE EXPORT ADMINISTRATION REGULATIONS. DIVERSION CONTRARY TO U.S. LAW PROHIBITED.

 <b>PASTERNAK</b> an INFINITE brand	INTERPRET ALL DIMENSIONS AND TOLERANCES PER ASME Y14.5	
	SCALE	SHEET
Website: <a href="http://www.Pasternack.com">www.Pasternack.com</a> Phone: 1.866.727.8376   1.949.261.1920	NONE	1 OF 1
DESCRIPTION		
3.5MM MALE TO SLIDE-ON BMA PLUG BULKHEAD CABLE USING TINNED RG405 COAX		
SIZE	CAGE CODE	ITEM NO.
A	53919	PE3W11276
DRAWN BY KGLEBOVA		
REV A		

UNLESS OTHERWISE SPECIFIED  
LEADING DIMENSIONS ARE INCHES  
DIMENSIONS IN [ ] ARE MILLIMETERS

TOLERANCES:

X = ±.2	[.5]	FRACTIONS
.XX = ±.02	[.5]	±.1/32
.XXX = ±.005	[.13]	ANGLES ± 1°

CABLE LENGTH TOLERANCES:

≤12 [305]	±.1 [25] / -0
>12 [305]	±.06 [1524] = +.2 [51] / -0
>60 [1524]	±.120 [3048] = +.4 [102] / -0
>120 [3048]	±.300 [7620] = +.6 [152] / -0
>300 [7620]	±.5% / -0

ALL DIMENSIONS ARE FOR REFERENCE ONLY  
AND SUBJECT TO CHANGE WITHOUT NOTICE.