



## SMA Female to SSMC Plug Cable Using RG188-DS Coax

### RF Cable Assemblies Technical Data Sheet

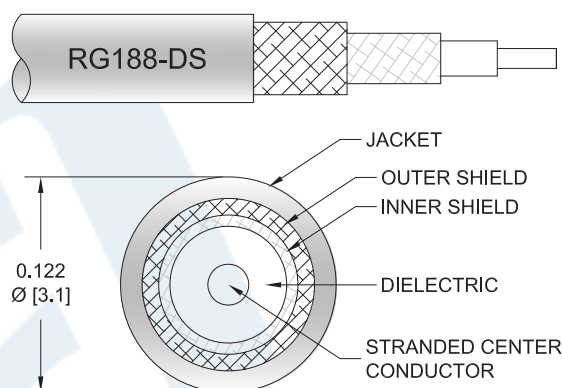
**PE3W12485**

#### Configuration

- Connector 1: SMA Female
- Connector 2: SSMC Plug
- Cable Type: RG188-DS

#### Features

- Max Frequency 10 GHz
- Double Shielded
- PTFE Jacket



#### Applications

- General Purpose
- Laboratory Use

#### Description

Pasternack's PE3W12485 SMA female to SSMC plug cable using RG188-DS coax is part of our full line of RF components available for same-day shipping. Pasternack's flexible RF cable assemblies are ideal for applications where tight bends and flexure are required. This Pasternack SMA to SSMC cable assembly has a female to plug gender configuration with 50 ohm flexible RG188-DS coax. The PE3W12485 SMA female to SSMC plug cable assembly operates to 10 GHz. The double shielding of this Pasternack cable assembly provides excellent shielding effectiveness.

Custom versions of most RF cable assemblies can be built and shipped same day. Custom cable assembly lengths can be obtained by specifying the desired length on the web site at time of order or by contacting a sales representative. Other available RF cable assembly value added services include connector orientation or clocking, heat shrink booting and custom labeling. RF testing can also be performed to document the electrical performance of your cable assembly.

Click the following link (or enter part number in "SEARCH" on website) to obtain additional part information including price, inventory and certifications: [SMA Female to SSMC Plug Cable Using RG188-DS Coax PE3W12485](#)



## SMA Female to SSMC Plug Cable Using RG188-DS Coax

### RF Cable Assemblies Technical Data Sheet

**PE3W12485**

#### Electrical Specifications

Description	Minimum	Typical	Maximum	Units
Frequency Range	DC		10	GHz
VSWR			1.4:1	
Capacitance		32 [104.99]		pF/ft [pF/m]

#### Specifications by Frequency

Description	F1	F2	F3	F4	F5	Units
Frequency	0.5	1	2.5	5	10	GHz
Insertion Loss (Typ.)	0.197	0.3	0.483	0.79	1.33	dB/ft
	0.65	0.98	1.58	2.59	4.36	dB/m

#### Electrical Specification Notes:

Insertion Loss does not include the loss of the connectors. Insertion Loss is estimated as 0.1 dB per connector.

#### Mechanical Specifications

##### Cable Assembly

Weight 0.031 lbs [14.06 g]

##### Cable

Cable Type RG188-DS  
 Impedance 50 Ohms  
 Inner Conductor Type Stranded  
 Inner Conductor Material and Plating Copper Clad Steel, Silver  
 Dielectric Type PTFE  
 Number of Shields 2  
 Shield Layer 1 Silver Plated Copper Braid  
 Shield Layer 2 Silver Plated Copper Braid  
 Jacket Material PTFE, White  
 Jacket Diameter 0.118 in [3 mm]

Click the following link (or enter part number in "SEARCH" on website) to obtain additional part information including price, inventory and certifications: [SMA Female to SSMC Plug Cable Using RG188-DS Coax PE3W12485](#)



## SMA Female to SSMC Plug Cable Using RG188-DS Coax

### RF Cable Assemblies Technical Data Sheet

**PE3W12485**

#### Connectors

Description	Connector 1	Connector 2
Type	SMA Female	SSMC Plug
Impedance	50 Ohms	50 Ohms
Mating Cycles		500
Contact Material and Plating		Beryllium Copper, Gold
Contact Plating Specification		MIL-G-45204
Dielectric Type		Teflon
Body Material and Plating	Brass, Nickel	Beryllium Copper, Gold
Body Plating Specification		MIL-G-45204
Coupling Nut Material and Plating		Beryllium Copper, Gold
Coupling Nut Plating Specification		MIL-G-45207
Torque		1.75 in-lbs [0.2 Nm]

#### Environmental Specifications

##### Temperature

Operating Range -55 to +165 deg C

**Compliance Certifications** (see [product page](#) for current document)

#### Plotted and Other Data

Notes:

Click the following link (or enter part number in "SEARCH" on website) to obtain additional part information including price, inventory and certifications: [SMA Female to SSMC Plug Cable Using RG188-DS Coax PE3W12485](#)



## SMA Female to SSMC Plug Cable Using RG188-DS Coax

### RF Cable Assemblies Technical Data Sheet

**PE3W12485**

#### How to Order

Part Number Configuration:

**PE3W12485**

- **xx**

**uu**

Unit of Measure:  
cm = Centimeters  
<blank> = Inches  
Length  
Base Number

Example: PE3W12485-12 = 12 inches long cable  
PE3W12485-100cm = 100 cm long cable

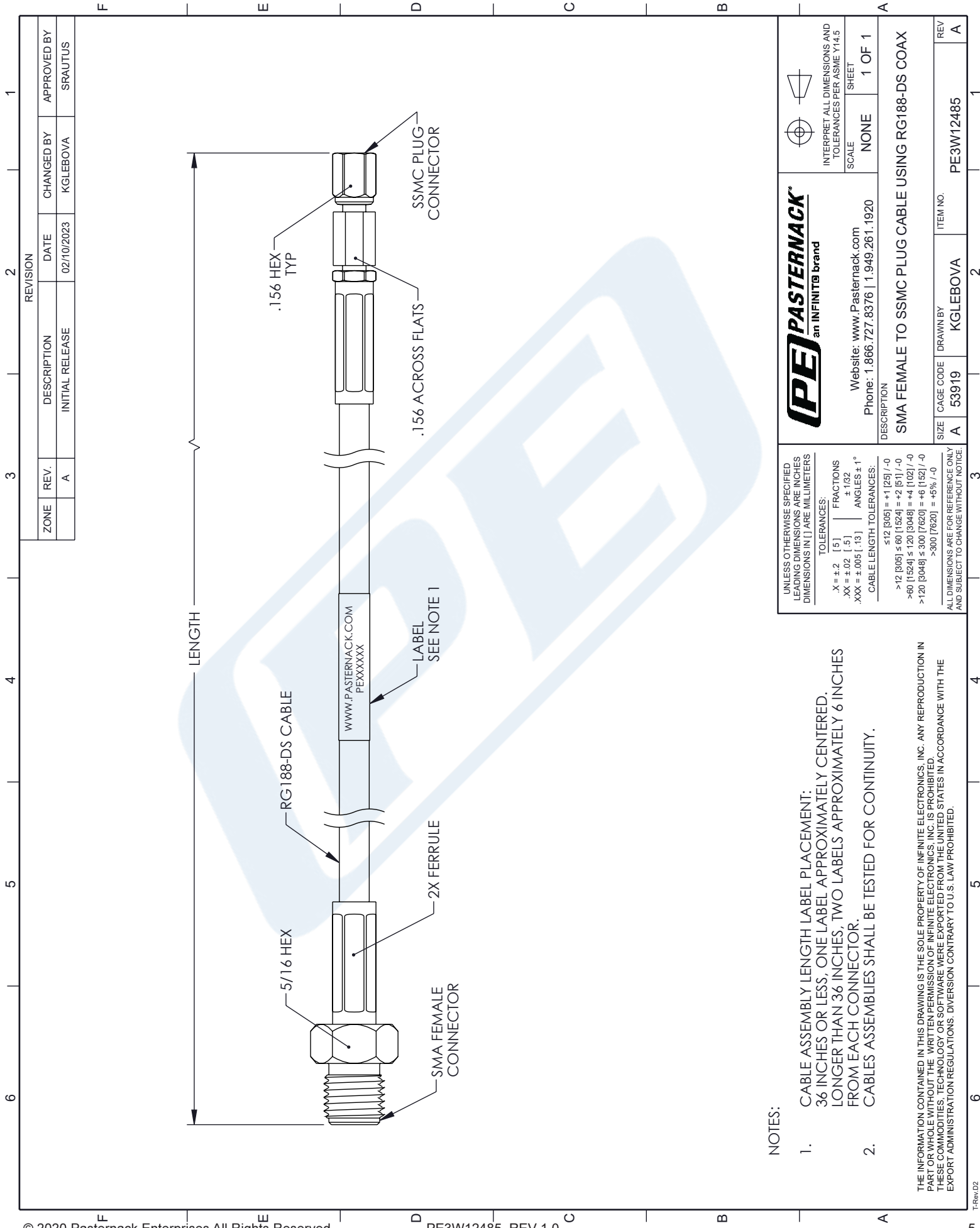
SMA Female to SSMC Plug Cable Using RG188-DS Coax from Pasternack Enterprises has same day shipment for domestic and International orders. Our RF, microwave and millimeter wave products maintain a 99.4% availability and are part of the broadest selection in the industry.

Click the following link (or enter part number in "SEARCH" on website) to obtain additional part information including price, inventory and certifications: [SMA Female to SSMC Plug Cable Using RG188-DS Coax PE3W12485](#)

URL: <https://www.pasternack.com/sma-female-to-ssmc-plug-cable-using-rg188-ds-pe3w12485-p.aspx>

The information contained in this document is accurate to the best of our knowledge and representative of the part described herein. It may be necessary to make modifications to the part and/or the documentation of the part, in order to implement improvements. Pasternack reserves the right to make such changes as required. Unless otherwise stated, all specifications are nominal. Pasternack does not make any representation or warranty regarding the suitability of the part described herein for any particular purpose, and Pasternack does not assume any liability arising out of the use of any part or documentation.

PE3W12485 CAD Drawing  
SMA Female to SSMC Plug Cable Using RG188-DS Coax



NOTES:

1. CABLE ASSEMBLY LENGTH LABEL PLACEMENT:  
36 INCHES OR LESS, ONE LABEL APPROXIMATELY CENTERED.  
LONGER THAN 36 INCHES, TWO LABELS APPROXIMATELY 6 INCHES  
FROM EACH CONNECTOR.
2. CABLES ASSEMBLIES SHALL BE TESTED FOR CONTINUITY.

THE INFORMATION CONTAINED IN THIS DRAWING IS THE SOLE PROPERTY OF INFINITE ELECTRONICS, INC. ANY REPRODUCTION IN PART OR WHOLE WITHOUT THE WRITTEN PERMISSION OF INFINITE ELECTRONICS, INC. IS PROHIBITED.  
THESE COMMODITIES, TECHNOLOGY OR SOFTWARE WERE EXPORTED FROM THE UNITED STATES IN ACCORDANCE WITH THE EXPORT ADMINISTRATION REGULATIONS. DIVERSION CONTRARY TO U.S. LAW PROHIBITED.

UNLESS OTHERWISE SPECIFIED  
LEADING DIMENSIONS ARE INCHES  
DIMENSIONS IN [ ] ARE MILLIMETERS

TOLERANCES:

X = ±.2	[.5]	FRACTIONS
.XX = ±.02	[.13]	±.1/32
.XXX = ±.005	[.13]	ANGLES ± 1°

CABLE LENGTH TOLERANCES:

≤12 [305]	±.1 [25] / -0
>12 [305] ≤ 60 [1524]	±.2 [51] / -0
>60 [1524] ≤ 120 [3048]	±.4 [102] / -0
>120 [3048] ≤ 300 [7620]	±.6 [152] / -0
>300 [7620]	±.5% / -0

ALL DIMENSIONS ARE FOR REFERENCE ONLY  
AND SUBJECT TO CHANGE WITHOUT NOTICE.

**PE PASTERNAK**  
an INFINITE brand

Website: [www.Pasternack.com](http://www.Pasternack.com)  
Phone: 1.866.727.8376 | 1.949.261.1920

INTERPRET ALL DIMENSIONS AND  
TOLERANCES PER ASME Y14.5

SCALE: NONE  
SHEET: 1 OF 1

DESCRIPTION  
**SMA FEMALE TO SSMC PLUG CABLE USING RG188-DS COAX**

SIZE	CAGE CODE	DRAWN BY	ITEM NO.
A	53919	KGLEBOVA	PE3W12485

REV A