

7/16 DIN Male to HN Female Cable Using RG214 Coax, LF Solder



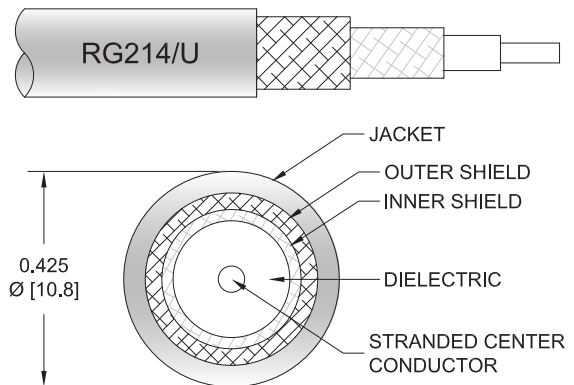
PE3W13403LF

Configuration

- Connector 1: 7/16 DIN Male
- Connector 2: HN Female
- Cable Type: RG214
- Coax Flex Type: Flexible

Features

- Max Frequency 2 GHz
- 66% Phase Velocity
- Double Shielded
- PVC Jacket



Applications

- General Purpose
- Laboratory Use

Description

Pasternack's PE3W13403LF 7/16 DIN male to HN female cable using RG214 coax is part of our full line of RF components available for same-day shipping. Pasternack's flexible RF cable assemblies are ideal for applications where tight bends and flexure are required. This Pasternack 7/16 DIN to HN cable assembly has a male to female gender configuration with 50 ohm flexible RG214 coax. The PE3W13403LF 7/16 DIN male to HN female cable assembly operates to 2 GHz. The double shielding of this Pasternack cable assembly provides excellent shielding effectiveness.

Custom versions of most RF cable assemblies can be built and shipped same day. Custom cable assembly lengths can be obtained by specifying the desired length on the web site at time of order or by contacting a sales representative. Other available RF cable assembly value added services include connector orientation or clocking, heat shrink booting and custom labeling. RF testing can also be performed to document the electrical performance of your cable assembly.

Electrical Specifications

Description	Minimum	Typical	Maximum	Units
Frequency Range	DC		2	GHz
VSWR			1.4:1	
Velocity of Propagation		66		%
Capacitance		30.8 [101.05]		pF/ft [pF/m]
Operating Voltage (AC)			1,500	V _{rms}

Specifications by Frequency

7/16 DIN Male to HN Female Cable
Using RG214 Coax, LF Solder



PE3W13403LF

Part Number	Length	Description	F1	F2	F3	F4	F5	Units	Weight (lbs)
			Frequency		50	100	250	500	
PE3W13403LF	Custom Lengths Available	Insertion Loss (Typ.)	0.01	0.02	0.03	0.05	0.109	dB/ft	
			0.04	0.07	0.1	0.15	0.36	dB/m	
PE3W13403LF-12	12 inch	Insertion Loss (Typ.)	0.22	0.22	0.23	0.25	0.31	dB	0.516
PE3W13403LF-36	36 inch	Insertion Loss (Typ.)	0.24	0.26	0.29	0.34	0.53	dB	0.773
PE3W13403LF-48	48 inch	Insertion Loss (Typ.)	0.25	0.28	0.32	0.38	0.64	dB	0.901
PE3W13403LF-72	72 inch	Insertion Loss (Typ.)	0.28	0.32	0.38	0.47	0.86	dB	1.157
PE3W13403LF-108	108 inch	Insertion Loss (Typ.)	0.31	0.38	0.47	0.61	1.19	dB	1.541

The insertion loss data for the base model does not include loss due to the connectors. Each length includes insertion loss due to the connectors.

Loss due to Connector 1: 0.1 dB
 Loss due to Connector 2: 0.1 dB
 Base Weight: 0.516 pounds
 Additional Weight per Inch: 0.01067 pounds

Mechanical Specifications

Cable Assembly

Width/Diameter: 0.5 in [12.7 mm]
 Weight: 0.516 lbs [234.05 g]

Cable

Cable Type: RG214
 Impedance: 50 Ohms
 Inner Conductor Type: Stranded
 Inner Conductor Material and Plating: Copper, Silver
 Dielectric Type: PE
 Number of Shields: 2
 Shield Layer 1: Silver Plated Copper Braid
 Shield Layer 2: Silver Plated Copper Braid
 Jacket Material: PVC, Black
 Jacket Diameter: 0.425 in [10.8 mm]
 Repeated Minimum Bend Radius: 1.6 in [40.64 mm]

7/16 DIN Male to HN Female Cable
Using RG214 Coax, LF Solder



PE3W13403LF

Connectors

Description	Connector 1	Connector 2
Type	7/16 DIN Male	HN Female
Specification	IEC 169-4	MIL-STD-348A
Impedance	50 Ohms	50 Ohms
Configuration	Straight	Straight
Contact Material and Plating	Brass, Gold	Brass, Gold
Contact Plating Specification	30 µin minimum	
Dielectric Type	PTFE	PTFE
Body Material and Plating	Brass, Nickel	Brass, Nickel
Body Plating Specification	100 µin minimum	100 µin minimum
Coupling Nut Material and Plating	Brass, Nickel	
Coupling Nut Plating Specification	100 µin minimum	
Hex Size	32 mm	
Torque	18.417 ft-lbs 24.97 Nm	

Environmental Specifications

Operating Range Temperature -20 to +80 deg C

Compliance Certifications (see [product page](#) for current document)

Plotted and Other Data

Notes:

7/16 DIN Male to HN Female Cable
Using RG214 Coax, LF Solder

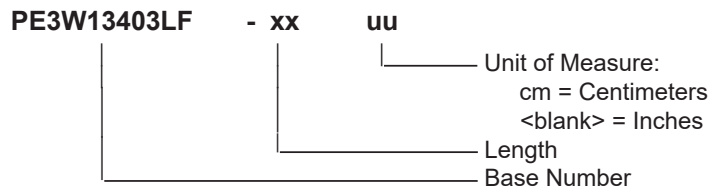


PE3W13403LF

Typical Performance Data

How to Order

Part Number Configuration:



Example: PE3W13403LF-12 = 12 inches long cable
PE3W13403LF-100cm = 100 cm long cable

7/16 DIN Male to HN Female Cable Using RG214 Coax, LF Solder from Pasternack Enterprises has same day shipment for domestic and International orders. Our RF, microwave and millimeter wave products maintain a 99.4% availability and are part of the broadest selection in the industry.

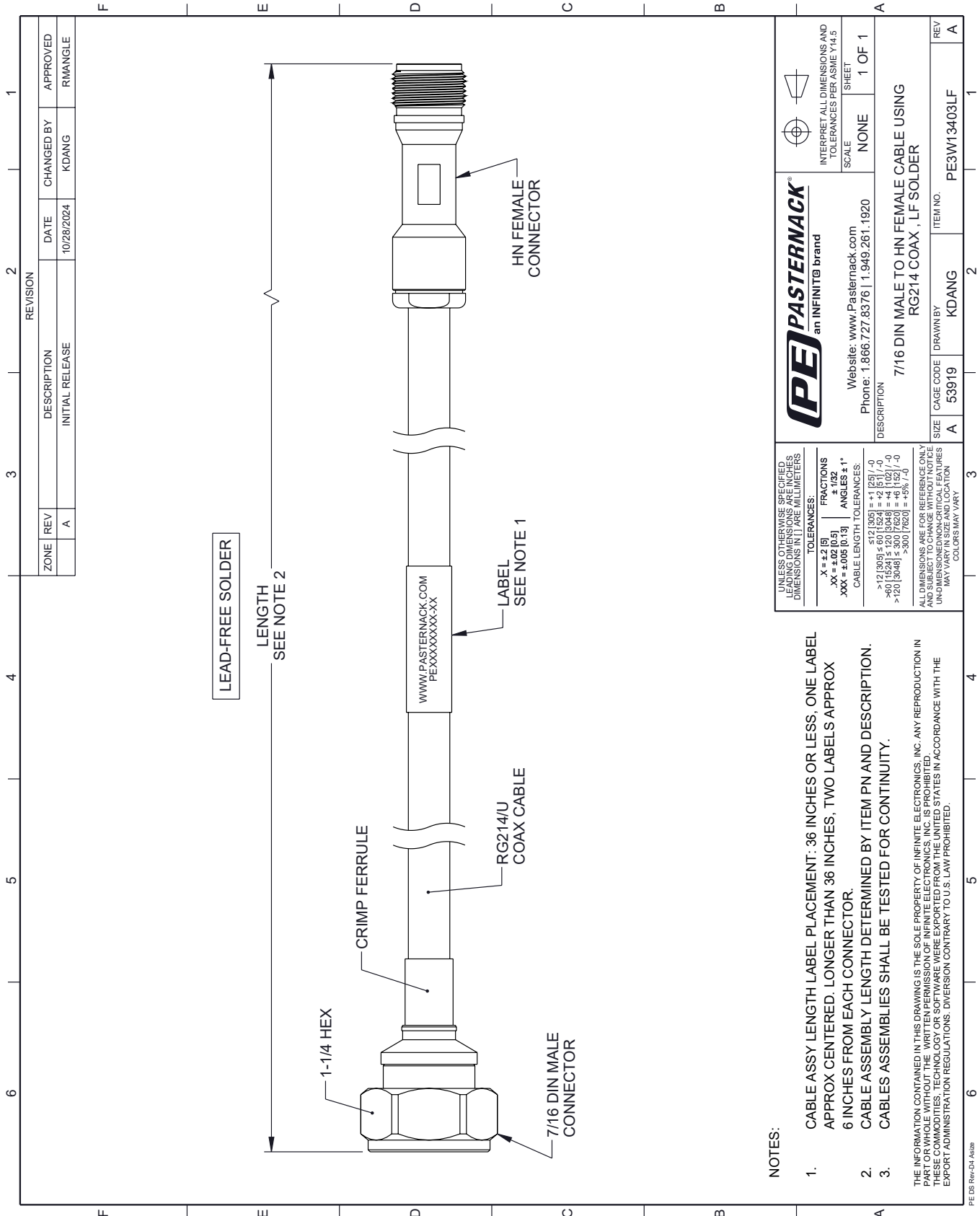
Click the following link (or enter part number in "SEARCH" on website) to obtain additional part information including price, inventory and certifications: [7/16 DIN Male to HN Female Cable Using RG214 Coax, LF Solder PE3W13403LF](#)

URL: <https://www.pasternack.com/7-16-din-male-to-hn-female-cable-using-rg214-lf-solder-pe3w13403lf-p.aspx>

The information contained within this document is accurate to the best of our knowledge and representative of the part described herein. It may be necessary to make modifications to the part and/or the documentation of the part in order to impliment improvements. Pasternack Enterprises reserves the right to make such changes as required. Unless otherwise stated, all specifications are nominal. Pasternack Enterprises does not make any representation or warranty regarding the suitability of the part described herein for any particular purpose, and Pasternack Enterprises does not assume liability arising out of the use of any part or document.

PE3W13403LF CAD Drawing

7/16 DIN Male to HN Female Cable Using RG214 Coax, LF Solder



ZONE	REV	DESCRIPTION	DATE	CHANGED BY	APPROVED
	A	INITIAL RELEASE	10/28/2024	KDANG	RMANGLE

PE PASTERNAK
an INFINITB brand

Website: www.Pasternack.com
Phone: 1.866.727.8376 | 1.949.261.1920

INTERPRET ALL DIMENSIONS AND TOLERANCES PER ASME Y14.5

SCALE: NONE SHEET: 1 OF 1

DESCRIPTION: 7/16 DIN MALE TO HN FEMALE CABLE USING RG214 COAX, LF SOLDER

SIZE	CAGE CODE	DRAWN BY	ITEM NO.
A	53919	KDANG	PE3W13403LF

REV A

NOTES:

- CABLE ASSY LENGTH LABEL PLACEMENT: 36 INCHES OR LESS, ONE LABEL APPROX CENTERED. LONGER THAN 36 INCHES, TWO LABELS APPROX 6 INCHES FROM EACH CONNECTOR.
- CABLE ASSEMBLY LENGTH DETERMINED BY ITEM PN AND DESCRIPTION.
- CABLE ASSEMBLIES SHALL BE TESTED FOR CONTINUITY.

UNLESS OTHERWISE SPECIFIED, LEADING DIMENSIONS ARE IN INCHES. DIMENSIONS IN [] ARE MILLIMETERS.

TOLERANCES:
 .X = ±.2 [5]
 .XX = ±.02 [0.5]
 .XXX = ±.005 [0.13]

ANGLES ± 1°
 ± 1/32

CABLE LENGTH TOLERANCES:
 <12 [305] ±.60 [1524] = +1 [25] / -0
 >12 [305] ±.60 [1524] = +2 [51] / -0
 >60 [1524] ±.126 [3048] = +4 [102] / -0
 >120 [3048] ±.300 [7620] = +5% / -0

ALL DIMENSIONS ARE FOR REFERENCE ONLY. UNDIMENSIONED NON-CRITICAL FEATURES MAY VARY IN SIZE AND LOCATION. COLORS MAY VARY.

THE INFORMATION CONTAINED IN THIS DRAWING IS THE SOLE PROPERTY OF INFINITE ELECTRONICS, INC. ANY REPRODUCTION IN PART OR WHOLE WITHOUT THE WRITTEN PERMISSION OF INFINITE ELECTRONICS, INC. IS PROHIBITED. THESE COMMODITIES, TECHNOLOGY OR SOFTWARE WERE EXPORTED FROM THE UNITED STATES IN ACCORDANCE WITH THE EXPORT ADMINISTRATION REGULATIONS. DIVERSION CONTRARY TO U.S. LAW PROHIBITED.

PE DS Rev-D4-A320