

## Slide-On BMA Jack 2 Hole Flange to SMA Female Bulkhead Low Loss Cable Using LMR-100 Coax with HeatShrink



### PE3W14666/HS

#### Configuration

- Connector 1: Slide-On BMA Jack 2 Hole Flange
- Connector 2: SMA Female Bulkhead
- Cable Type: LMR-100A
- Coax Flex Type: Flexible

#### Features

- Shielding Effectivity > 90 dB
- 66% Phase Velocity
- Double Shielded
- PVC Jacket



#### Applications

- General Purpose
- Laboratory Use

#### Description

Pasternack's PE3W14666/HS BMA jack slide-on 2 hole flange to SMA female bulkhead cable using LMR-100 coax is part of our full line of RF components available for same-day shipping. Pasternack's flexible RF cable assemblies are ideal for applications where tight bends and flexure are required. This Pasternack BMA to SMA cable assembly has a jack to female gender configuration with 50 ohm flexible LMR-100A coax. Our RF cable assembly with BMA 2 hole flange and SMA bulkhead interface allows designers to create external connections on their product enclosures, and can be used in a variety of other rack mount and panel mount applications. The double shielding of this Pasternack cable assembly provides excellent shielding effectiveness of better than 90 dB.

Custom versions of most RF cable assemblies can be built and shipped same day. Custom cable assembly lengths can be obtained by specifying the desired length on the web site at time of order or by contacting a sales representative. Other available RF cable assembly value added services include connector orientation or clocking, heat shrink booting and custom labeling. RF testing can also be performed to document the electrical performance of your cable assembly.

#### Electrical Specifications

Description	Minimum	Typical	Maximum	Units
Velocity of Propagation		66		%
RF Shielding	90			dB
Group Delay		1.54 [5.05]		ns/ft [ns/m]
Capacitance		30.8 [101.05]		pF/ft [pF/m]
Inductance		0.077 [0.25]		uH/ft [uH/m]
DC Resistance Inner Conductor		81 [265.75]		Ohms/1000ft [Ohms/Km]
DC Resistance Outer Conductor		9.5 [31.17]		Ohms/1000ft [Ohms/Km]

Slide-On BMA Jack 2 Hole Flange to SMA Female Bulkhead  
Low Loss Cable Using LMR-100 Coax with HeatShrink



**PE3W14666/HS**

**Electrical Specifications**

Description	Minimum	Typical	Maximum	Units
Jacket Spark			2,000	Vrms

**Mechanical Specifications**

**Cable Assembly**

Width/Diameter	0.5 in [12.7 mm]
Weight	0.019 lbs [8.62 g]

**Cable**

Cable Type	LMR-100A
Impedance	50 Ohms
Inner Conductor Type	Solid
Inner Conductor Material and Plating	Copper Clad Steel
Dielectric Type	PE
Number of Shields	2
Shield Layer 1	Aluminum Tape
Shield Layer 2	Tinned Copper Braid
Jacket Material	PVC, Black
Jacket Diameter	0.11 in [2.79 mm]
One Time Minimum Bend Radius	0.25 in [6.35 mm]
Repeated Minimum Bend Radius	1 in [25.4 mm]
Bending Moment	0.1 lbs-ft [0.14 N-m]
Flat Plate Crush	10 lbs/in [0.18 Kg/mm]
Tensile Strength	15 lbs [6.8 Kg]

**Connectors**

Description	Connector 1	Connector 2
Type	BMA Jack 2 Hole Flange	SMA Female Bulkhead
Specification		MIL-STD-348
Impedance	50 Ohms	50 Ohms
Configuration	Straight	Straight
Connection Method	Slide-On	
Mating Cycles	1,000	500
Contact Material and Plating	Beryllium Copper, Gold	Beryllium Copper, Gold
Contact Plating Specification		MIL-G-45204
Dielectric Type	PTFE	
Outer Conductor Material and Plating	Beryllium Copper, Gold	Brass, Nickel
Body Material and Plating	Brass, Tri-Metal	Brass, Nickel

## Slide-On BMA Jack 2 Hole Flange to SMA Female Bulkhead Low Loss Cable Using LMR-100 Coax with HeatShrink



### PE3W14666/HS

#### Environmental Specifications

**Compliance Certifications** (see [product page](#) for current document)

#### Plotted and Other Data

Notes:

#### Typical Performance Data

#### How to Order

Part Number Configuration:

**PE3W14666/HS - xx uu**

Unit of Measure:  
cm = Centimeters  
<blank> = Inches  
Length  
Base Number

Example: PE3W14666/HS-12 = 12 inches long cable  
PE3W14666/HS-100cm = 100 cm long cable

Slide-On BMA Jack 2 Hole Flange to SMA Female Bulkhead Low Loss Cable Using LMR-100 Coax with HeatShrink from Pasternack Enterprises has same day shipment for domestic and International orders. Our RF, microwave and millimeter wave products maintain a 99.4% availability and are part of the broadest selection in the industry.

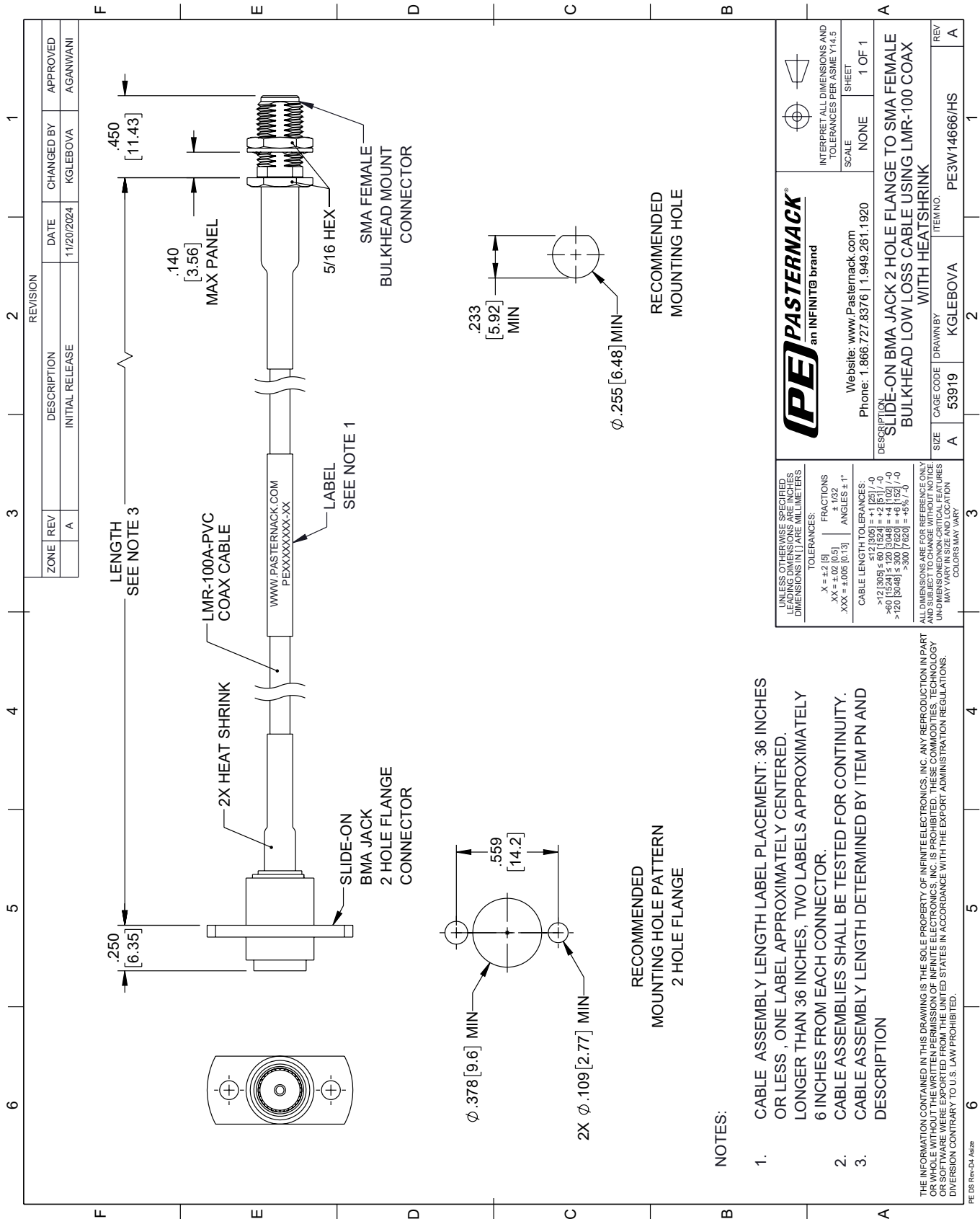
Click the following link (or enter part number in "SEARCH" on website) to obtain additional part information including price, inventory and certifications: [Slide-On BMA Jack 2 Hole Flange to SMA Female Bulkhead Low Loss Cable Using LMR-100 Coax with HeatShrink PE3W14666/HS](#)

URL: <https://www.pasternack.com/slide-on-bma-jack-2-hole-flange-to-sma-female-bulkhead-low-loss-cable-using-lmr-100-with-heatshrink-pe3w14666-hs-p.aspx>

The information contained within this document is accurate to the best of our knowledge and representative of the part described herein. It may be necessary to make modifications to the part and/or the documentation of the part in order to implement improvements. Pasternack Enterprises reserves the right to make such changes as required. Unless otherwise stated, all specifications are nominal. Pasternack Enterprises does not make any representation or warranty regarding the suitability of the part described herein for any particular purpose, and Pasternack Enterprises does not assume liability arising out of the use of any part or document.

# PE3W14666/HS CAD Drawing

Slide-On BMA Jack 2 Hole Flange to SMA Female Bulkhead Low Loss Cable Using LMR-100 Coax with HeatShrink



**PE PASTERNAK**  
an INFINITE brand

Website: [www.Pasternack.com](http://www.Pasternack.com)  
Phone: 1.866.727.8376 | 1.949.261.1920

INTERPRET ALL DIMENSIONS AND TOLERANCES PER ASME Y14.5

SCALE: NONE  
SHEET: 1 OF 1

DESCRIPTION: SLIDE-ON BMA JACK 2 HOLE FLANGE TO SMA FEMALE BULKHEAD LOW LOSS CABLE USING LMR-100 COAX WITH HEATSHRINK

REV	A
ITEM NO.	PE3W14666/HS
SIZE	A
CAGE CODE	53919
DRAWN BY	KGLEBOVA

- NOTES:
- CABLE ASSEMBLY LENGTH LABEL PLACEMENT: 36 INCHES OR LESS, ONE LABEL APPROXIMATELY CENTERED. LONGER THAN 36 INCHES, TWO LABELS APPROXIMATELY 6 INCHES FROM EACH CONNECTOR.
  - CABLE ASSEMBLIES SHALL BE TESTED FOR CONTINUITY.
  - CABLE ASSEMBLY LENGTH DETERMINED BY ITEM PN AND DESCRIPTION