

## 4.3-10 Male to 4.3-10 Male Right Angle Low PIM Cable Using TFT-5G-402 Coax with Times Microwave Components



### PE3W15304

#### Configuration

- Connector 1: 4.3-10 Male
- Connector 2: 4.3-10 Male Right Angle
- Cable Type: TFT-5G-402
- Coax Flex Type: Flexible

#### Features

- Max Frequency 6 GHz
- Low PIM: -160 dBc Max
- Shielding Effectivity > 80 dB
- 76% Phase Velocity
- Double Shielded
- FEP Jacket
- 500 Mating Cycles



#### Applications

- General Purpose
- Laboratory Use
- Low PIM Applications

#### Description

Pasternack's PE3W15304 4.3-10 male to 4.3-10 male right angle cable using TFT-5G-402 coax is part of our full line of RF components available for same-day shipping. Pasternack's flexible RF cable assemblies are ideal for applications where tight bends and flexure are required. This Pasternack 4.3-10 to 4.3-10 cable assembly has a male to male gender configuration with 50 ohm flexible TFT-5G-402 coax. The PE3W15304 4.3-10 male to 4.3-10 male cable assembly operates to 6 GHz. Our low PIM design also offers excellent passive intermodulation performance with PIM levels better than -160 dBc. The right angle 4.3-10 interface on the TFT-5G-402 cable allows for easier connections in tight spaces. The double shielding of this Pasternack cable assembly provides excellent shielding effectiveness of better than 80 dB.

Custom versions of most RF cable assemblies can be built and shipped same day. Custom cable assembly lengths can be obtained by specifying the desired length on the web site at time of order or by contacting a sales representative. Other available RF cable assembly value added services include connector orientation or clocking, heat shrink booting and custom labeling. RF testing can also be performed to document the electrical performance of your cable assembly.

#### Electrical Specifications

| Description                                | Minimum | Typical     | Maximum | Units        |
|--|---------|-------------|---------|--------------|
| Frequency Range                            | DC      |             | 6       | GHz          |
| VSWR                                       |         |             | 1.4:1   |              |
| Velocity of Propagation                    |         | 76          |         | %            |
| RF Shielding                               | 80      |             |         | dB           |
| Passive Intermodulation                    |         |             | -160    | dBc          |
| IM3 (2x43dBm Tones) at 850 MHz or 1900 MHz |         |             |         |              |
| Capacitance                                |         | 26.7 [87.6] |         | pF/ft [pF/m] |

#### Specifications by Frequency

## 4.3-10 Male to 4.3-10 Male Right Angle Low PIM Cable Using TFT-5G-402 Coax with Times Microwave Components



### PE3W15304

| Part Number     | Length                   | Description           | F1        | F2    | F3    | F4    | Units | Weight (lbs) |
|-----------------|--------------------------|-----------------------|-----------|-------|-------|-------|-------|--------------|
|                 |                          |                       | Frequency | 500   | 1000  | 2500  | 6000  |              |
| PE3W15304       | Custom Lengths Available | Insertion Loss (Typ.) | 0.081     | 0.111 | 0.188 | 0.295 | dB/ft |              |
|                 |                          |                       | 0.27      | 0.37  | 0.62  | 0.97  | dB/m  |              |
| PE3W15304-12    | 12 In                    | Insertion Loss (Typ.) | 0.57      | 0.6   | 0.67  | 0.78  | dB    | 0.088        |
| PE3W15304-24    | 24 In                    | Insertion Loss (Typ.) | 0.65      | 0.71  | 0.86  | 1.07  | dB    | 0.117        |
| PE3W15304-36    | 36 In                    | Insertion Loss (Typ.) | 0.73      | 0.82  | 1.05  | 1.37  | dB    | 0.145        |
| PE3W15304-60    | 60 In                    | Insertion Loss (Typ.) | 0.89      | 1.04  | 1.42  | 1.96  | dB    | 0.201        |
| PE3W15304-200CM | 200 CM                   | Insertion Loss (Typ.) | 1.02      | 1.21  | 1.72  | 2.42  | dB    | 0.245        |

The insertion loss data for the base model does not include loss due to the connectors. Each length includes insertion loss due to the connectors.

|                             |                |
|-----------------------------|----------------|
| Loss due to Connector 1:    | 0.24 dB        |
| Loss due to Connector 2:    | 0.24 dB        |
| Base Weight:                | 0.088 pounds   |
| Additional Weight per Inch: | 0.00234 pounds |

### Mechanical Specifications

#### Cable Assembly

|                |                     |
|----------------|---------------------|
| Width/Diameter | .5 in [12.7 mm]     |
| Weight         | 0.088 lbs [39.92 g] |

#### Cable

|  |                    |
|--|--------------------|
| Cable Type                             | TFT-5G-402         |
| Impedance                              | 50 Ohms            |
| Inner Conductor Type                   | Solid              |
| Inner Conductor Material and Plating   | Copper             |
| Dielectric Type                        | PTFE               |
| Number of Shields                      | 2                  |
| Shield Layer 1                         | Tin                |
| Outer Conductor 1 Material and Plating | Copper, Tin        |
| Jacket Material                        | FEP, Blue          |
| Jacket Diameter                        | 0.16 in [4.06 mm]  |
| One Time Minimum Bend Radius           | 0.75 in [19.05 mm] |

## 4.3-10 Male to 4.3-10 Male Right Angle Low PIM Cable Using TFT-5G-402 Coax with Times Microwave Components



### PE3W15304

#### Connectors

| Description                        | Connector 1       | Connector 2             |
|------------------------------------|-------------------|-------------------------|
| Type                               | 4.3-10 Male       | 4.3-10 Male Right Angle |
| Impedance                          | 50 Ohms           | 50 Ohms                 |
| Configuration                      | Straight          | Right Angle             |
| Mating Cycles                      | 500               | 500                     |
| Contact Material and Plating       | Brass, Silver     | Brass, Silver           |
| Contact Plating Specification      | 200 µin           | 200 µin                 |
| Dielectric Type                    | PTFE              | PTFE                    |
| Body Material and Plating          | Brass, Tri-Metal  | Brass, Tri-Metal        |
| Body Plating Specification         | 80 µin            | 80 µin                  |
| Coupling Nut Material and Plating  | Brass, Tri-Metal  | Brass, Tri-Metal        |
| Coupling Nut Plating Specification | 80 µin            | 80 µin                  |
| Torque                             | 44 in-lbs 4.97 Nm | 44 in-lbs 4.97 Nm       |

#### Environmental Specifications

Operating Range Temperature -40 to +85 deg C

**Compliance Certifications** (see [product page](#) for current document)

#### Plotted and Other Data

Notes:

## 4.3-10 Male to 4.3-10 Male Right Angle Low PIM Cable Using TFT-5G-402 Coax with Times Microwave Components



### PE3W15304

#### Typical Performance Data

#### How to Order

Part Number Configuration:

**PE3W15304**

- **xx**

**uu**

Unit of Measure:

cm = Centimeters

<blank> = Inches

Length

Base Number

Example: PE3W15304-12 = 12 inches long cable  
PE3W15304-100cm = 100 cm long cable

4.3-10 Male to 4.3-10 Male Right Angle Low PIM Cable Using TFT-5G-402 Coax with Times Microwave Components from Pasternack Enterprises has same day shipment for domestic and International orders. Our RF, microwave and millimeter wave products maintain a 99.4% availability and are part of the broadest selection in the industry.

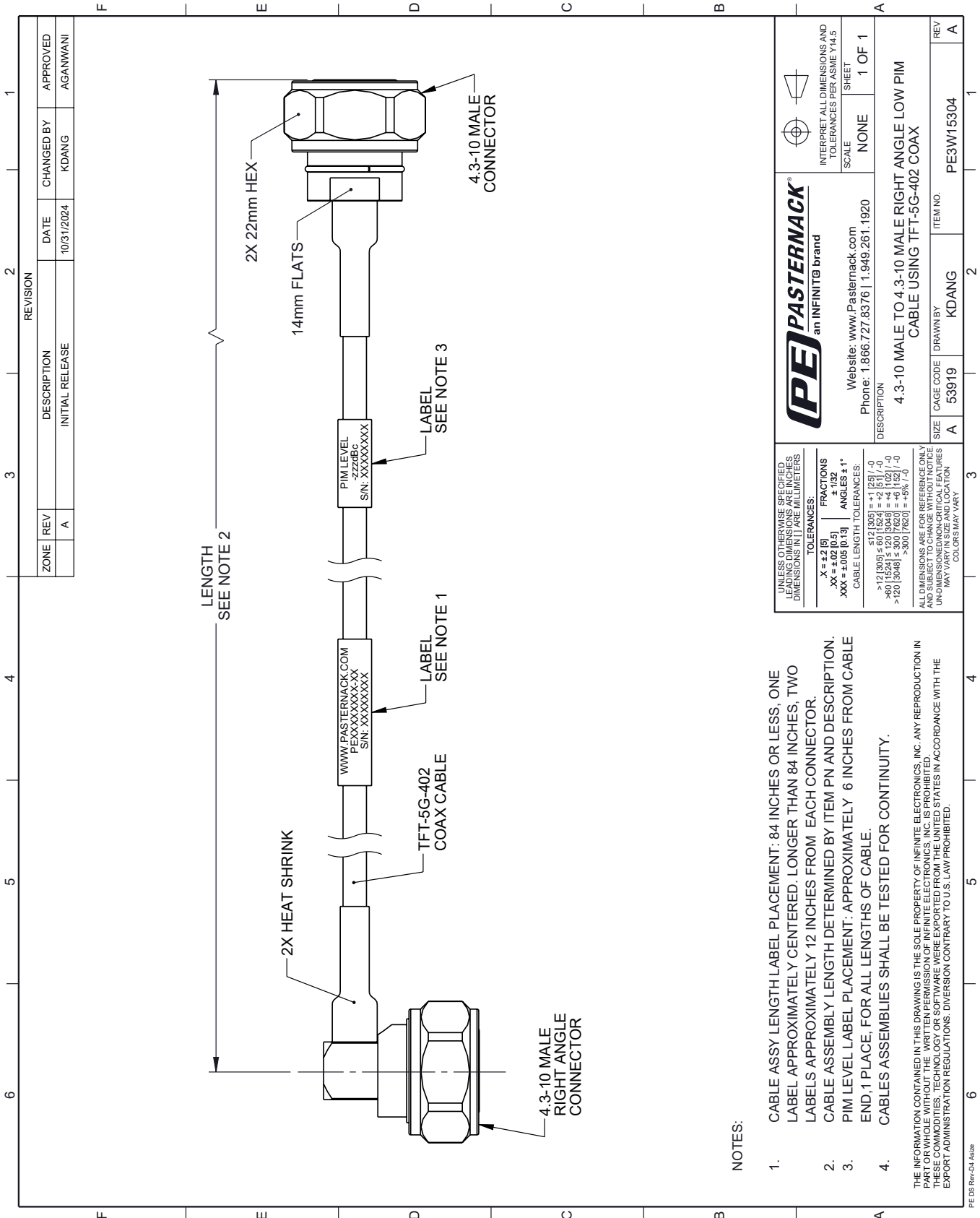
Click the following link (or enter part number in "SEARCH" on website) to obtain additional part information including price, inventory and certifications: [4.3-10 Male to 4.3-10 Male Right Angle Low PIM Cable Using TFT-5G-402 Coax with Times Microwave Components PE3W15304](#)

URL: <https://www.pasternack.com/4.3-10-male-to-4.3-10-male-low-pim-cable-using-tft-5g-402-pe3w15304-p.aspx>

The information contained within this document is accurate to the best of our knowledge and representative of the part described herein. It may be necessary to make modifications to the part and/or the documentation of the part in order to impliment improvements. Pasternack Enterprises reserves the right to make such changes as required. Unless otherwise stated, all specifications are nominal. Pasternack Enterprises does not make any representation or warranty regarding the suitability of the part described herein for any particular purpose, and Pasternack Enterprises does not assume liability arising out of the use of any part or document.

# PE3W15304 CAD Drawing

4.3-10 Male to 4.3-10 Male Right Angle Low PIM Cable Using TFT-5G-402 Coax with Times Microwave Components



| REVISION |     | DATE            | CHANGED BY | APPROVED |
|----------|-----|-----------------|------------|----------|
| ZONE     | REV | DESCRIPTION     |            |          |
|          | A   | INITIAL RELEASE | KDANG      | AGANWANI |

**PE PASTERNAK**  
an INFINITB brand

Website: [www.Pasternack.com](http://www.Pasternack.com)  
Phone: 1.866.727.8376 | 1.949.261.1920

INTERPRET ALL DIMENSIONS AND TOLERANCES PER ASME Y14.5  
SCALE NONE SHEET 1 OF 1

DESCRIPTION  
4.3-10 MALE TO 4.3-10 MALE RIGHT ANGLE LOW PIM CABLE USING TFT-5G-402 COAX

|      |           |          |           |
|------|-----------|----------|-----------|
| SIZE | CAGE CODE | DRAWN BY | ITEM NO.  |
| A    | 53919     | KDANG    | PE3W15304 |

REV A

UNLESS OTHERWISE SPECIFIED LEADING DIMENSIONS ARE IN INCHES DIMENSIONS IN [ ] ARE MILLIMETERS

TOLERANCES:  
 .X = ±.2 [5]  
 .XX = ±.02 [0.5]  
 .XXX = ±.005 [0.13]

FRACTIONS  
 ± 1/32  
 ANGLES ± 1°

CABLE LENGTH TOLERANCES:  
 ≤ 12 [305] ± .60 [1524] = ± 2 [51] / -0  
 > 12 [305] ≤ 60 [1524] = ± 4 [102] / -0  
 > 60 [1524] ≤ 120 [3048] = ± 4 [102] / -0  
 > 120 [3048] ≤ 300 [7620] = ± 5% / -0

ALL DIMENSIONS ARE FOR REFERENCE ONLY UNLESS OTHERWISE SPECIFIED. DIMENSIONS IN [ ] ARE IN MILLIMETERS. DIMENSIONS IN SIZE AND LOCATION MAY VARY IN SIZE AND LOCATION. COLORS MAY VARY.

NOTES:  
 1. CABLE ASSY LENGTH LABEL PLACEMENT: 84 INCHES OR LESS, ONE LABEL APPROXIMATELY CENTERED. LONGER THAN 84 INCHES, TWO LABELS APPROXIMATELY 12 INCHES FROM EACH CONNECTOR.  
 2. CABLE ASSEMBLY LENGTH DETERMINED BY ITEM PN AND DESCRIPTION.  
 3. PIM LEVEL LABEL PLACEMENT: APPROXIMATELY 6 INCHES FROM CABLE END, 1 PLACE. FOR ALL LENGTHS OF CABLE.  
 4. CABLES ASSEMBLIES SHALL BE TESTED FOR CONTINUITY.

THE INFORMATION CONTAINED IN THIS DRAWING IS THE SOLE PROPERTY OF INFINITE ELECTRONICS, INC. ANY REPRODUCTION IN PART OR WHOLE WITHOUT THE WRITTEN PERMISSION OF INFINITE ELECTRONICS, INC. IS PROHIBITED. THESE COMMODITIES, TECHNOLOGY OR SOFTWARE WERE EXPORTED FROM THE UNITED STATES IN ACCORDANCE WITH THE EXPORT ADMINISTRATION REGULATIONS. DIVERSION CONTRARY TO U.S. LAW PROHIBITED.

PE DS Rev-D4 A4326