

7/16 DIN Male to 7/16 DIN Male Right Angle Low Loss Cable Using LMR-600-UF Coax



PE3W17248

Configuration

- Connector 1: 7/16 DIN Male
- Connector 2: 7/16 DIN Male Right Angle
- Cable Type: LMR-600-UF
- Coax Flex Type: Flexible

Features

- Max Frequency 3 GHz
- Shielding Effectivity > 90 dB
- 87% Phase Velocity
- Double Shielded
- TPE Jacket

Applications

- General Purpose
- Laboratory Use

Description

Pasternack's PE3W17248 7/16 DIN male to 7/16 DIN male right angle cable using LMR-600-UF coax is part of our full line of RF components available for same-day shipping. Pasternack's flexible RF cable assemblies are ideal for applications where tight bends and flexure are required. This Pasternack 7/16 DIN to 7/16 DIN cable assembly has a male to male gender configuration with 50 ohm flexible LMR-600-UF coax. The PE3W17248 7/16 DIN male to 7/16 DIN male cable assembly operates to 3 GHz. The right angle 7/16 DIN interface on the LMR-600-UF cable allows for easier connections in tight spaces. The double shielding of this Pasternack cable assembly provides excellent shielding effectiveness of better than 90 dB.

Custom versions of most RF cable assemblies can be built and shipped same day. Custom cable assembly lengths can be obtained by specifying the desired length on the web site at time of order or by contacting a sales representative. Other available RF cable assembly value added services include connector orientation or clocking, heat shrink booting and custom labeling. RF testing can also be performed to document the electrical performance of your cable assembly.

Electrical Specifications

Description	Minimum	Typical	Maximum	Units
Frequency Range	DC		3	GHz
VSWR			1.33:1	
Velocity of Propagation		87		%
RF Shielding	90			dB
Group Delay		1.17 [3.84]		ns/ft [ns/m]
Capacitance		23.4 [76.77]		pF/ft [pF/m]
Inductance		0.058 [0.19]		uH/ft [uH/m]
DC Resistance Inner Conductor		0.43 [1.41]		Ohms/1000ft [Ohms/Km]
DC Resistance Outer Conductor		1.2 [3.94]		Ohms/1000ft [Ohms/Km]
Dielectric Withstanding Voltage (AC)			750	Vrms

7/16 DIN Male to 7/16 DIN Male Right Angle Low Loss Cable Using LMR-600-UF Coax



PE3W17248

Electrical Specifications

Description	Minimum	Typical	Maximum	Units
Jacket Spark			8,000	Vrms

Specifications by Frequency

Part Number	Length	Description	F1	F2	F3	F4	F5	Units	Weight (lbs)
		Frequency	100	250	500	1000	3000	MHz	
PE3W17248	Custom Lengths Available	Insertion Loss (Typ.)	0.001	0.015	0.022	0.032	0.056	dB/ft	
			0.01	0.05	0.08	0.11	0.19	dB/m	
PE3W17248-12	12 inch	Insertion Loss (Typ.)	0.16	0.17	0.18	0.19	0.21	dB	0.648
PE3W17248-24	24 inch	Insertion Loss (Typ.)	0.16	0.18	0.2	0.22	0.27	dB	0.825
PE3W17248-36	36 inch	Insertion Loss (Typ.)	0.16	0.2	0.22	0.25	0.32	dB	1.001
PE3W17248-60	60 inch	Insertion Loss (Typ.)	0.16	0.23	0.26	0.31	0.43	dB	1.353
PE3W17248-300	300 inch	Insertion Loss (Typ.)	0.18	0.53	0.7	0.95	1.55	dB	4.873

The insertion loss data for the base model does not include loss due to the connectors. Each length includes insertion loss due to the connectors.

Loss due to Connector 1:	0.1 dB
Loss due to Connector 2:	0.05 dB
Base Weight:	0.648 pounds
Additional Weight per Inch:	0.01467 pounds

Mechanical Specifications

Cable Assembly

Width/Diameter	0.5 in [12.7 mm]
Weight	0.648 lbs [293.93 g]

Cable

Cable Type	LMR-600-UF
Impedance	50 Ohms
Inner Conductor Type	Stranded
Inner Conductor Material and Plating	Copper
Dielectric Type	Foam PE
Number of Shields	2
Shield Layer 1	Aluminum Tape
Shield Layer 2	Tinned Copper
Jacket Material	TPE, Black
Jacket Diameter	0.59 in [14.99 mm]
One Time Minimum Bend Radius	1.5 in [38.1 mm]
Repeated Minimum Bend Radius	6 in [152.4 mm]
Bending Moment	1.75 lbs-ft [2.37 N-m]
Flat Plate Crush	40 lbs/in [0.71 Kg/mm]
Tensile Strength	350 lbs [158.76 Kg]

7/16 DIN Male to 7/16 DIN Male Right Angle Low Loss Cable Using LMR-600-UF Coax



PE3W17248

Connectors

Description	Connector 1	Connector 2
Type	7/16 DIN Male	7/16 DIN Male Right Angle
Specification	IEC 61169-4	
Impedance	50 Ohms	50 Ohms
Configuration	Straight	Right Angle
Contact Material and Plating	Brass, Silver	Brass, Silver
Contact Plating Specification		3μ m minimum
Dielectric Type	PTFE	PTFE
Outer Conductor Material and Plating		Brass, Tri-Metal
Outer Conductor Plating Specification		3μ m minimum
Body Material and Plating	Brass, Tri-Metal	Brass, Tri-Metal
Body Plating Specification		3μ m minimum
Coupling Nut Material and Plating	Brass, Tri-Metal	Brass, Tri-Metal
Coupling Nut Plating Specification		3μ m minimum
Hex Size		1 1/4 in.
Torque		18.417 ft-lbs 24.97 Nm

Environmental Specifications

Operating Range Temperature -40 to +85 deg C

Compliance Certifications (see [product page](#) for current document)

Plotted and Other Data

Notes:

7/16 DIN Male to 7/16 DIN Male Right Angle Low Loss Cable Using LMR-600-UF Coax



PE3W17248

Typical Performance Data

How to Order

Part Number Configuration:

PE3W17248

- XX

uu

- Unit of Measure:
cm = Centimeters
<blank> = Inches

- Length

- Base Number

Example: PE3W17248-12 = 12 inches long cable
PE3W17248-100cm = 100 cm long cable

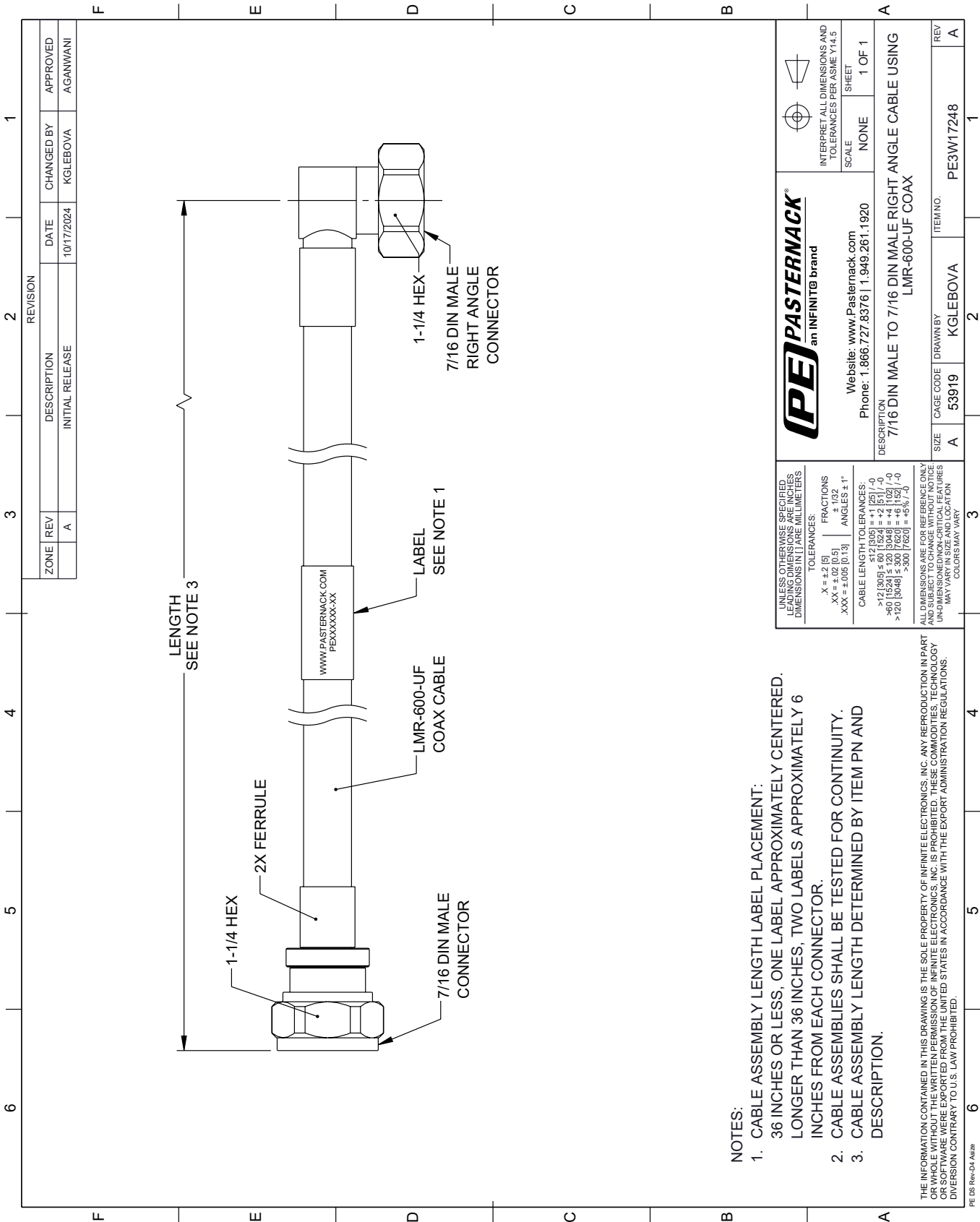
7/16 DIN Male to 7/16 DIN Male Right Angle Low Loss Cable Using LMR-600-UF Coax from Pasternack Enterprises has same day shipment for domestic and International orders. Our RF, microwave and millimeter wave products maintain a 99.4% availability and are part of the broadest selection in the industry.

Click the following link (or enter part number in "SEARCH" on website) to obtain additional part information including price, inventory and certifications: [7/16 DIN Male to 7/16 DIN Male Right Angle Low Loss Cable Using LMR-600-UF Coax PE3W17248](#)

URL: <https://www.pasternack.com/7-16-din-male-to-7-16-din-male-low-loss-cable-using-lmr-600-uf-pe3w17248-p.aspx>

The information contained within this document is accurate to the best of our knowledge and representative of the part described herein. It may be necessary to make modifications to the part and/or the documentation of the part in order to implement improvements. Pasternack Enterprises reserves the right to make such changes as required. Unless otherwise stated, all specifications are nominal. Pasternack Enterprises does not make any representation or warranty regarding the suitability of the part described herein for any particular purpose, and Pasternack Enterprises does not assume liability arising out of the use of any part or document.

PE3W17248 CAD Drawing
7/16 DIN Male to 7/16 DIN Male Right Angle Low Loss Cable Using LMR-600-UF Coax



- NOTES:
- 1. CABLE ASSEMBLY LENGTH LABEL PLACEMENT: 36 INCHES OR LESS, ONE LABEL APPROXIMATELY CENTERED. LONGER THAN 36 INCHES, TWO LABELS APPROXIMATELY 6 INCHES FROM EACH CONNECTOR.
 - 2. CABLE ASSEMBLIES SHALL BE TESTED FOR CONTINUITY.
 - 3. CABLE ASSEMBLY LENGTH DETERMINED BY ITEM PN AND DESCRIPTION.

PE PASTERNAK an INFINITE® brand		Website: www.Pasternack.com Phone: 1.866.727.8376 1.949.261.1920		INTERPRET ALL DIMENSIONS AND TOLERANCES PER ASME Y14.5
UNLESS OTHERWISE SPECIFIED, LEADING DIMENSIONS ARE IN INCHES. DIMENSIONS IN [] ARE MILLIMETERS.		TOLERANCES:		SCALE: NONE
X = ±.2 [5]		FRACTIONS		SHEET 1 OF 1
.XX = ±.02 [0.5]		± 1/32		
.XXX = ±.005 [0.13]		ANGLES ± 1°		
CABLE LENGTH TOLERANCES:		CABLE LENGTH TOLERANCES:		
>12 [305] ≤ 60 [1524] = ±.125 [-0]		>12 [305] ≤ 60 [1524] = ±.125 [-0]		
>60 [1524] ≤ 120 [3048] = ±.125 [-0]		>60 [1524] ≤ 120 [3048] = ±.125 [-0]		
>120 [3048] ≤ 300 [7620] = ±.125 [-0]		>120 [3048] ≤ 300 [7620] = ±.125 [-0]		
ALL DIMENSIONS ARE FOR REFERENCE ONLY. UNLESS OTHERWISE SPECIFIED, DIMENSIONS ARE UNDIMENSIONED/NON-CRITICAL FEATURES. MAY VARY IN SIZE AND LOCATION. COLORS MAY VARY.		DESCRIPTION		
		7/16 DIN MALE TO 7/16 DIN MALE RIGHT ANGLE CABLE USING LMR-600-UF COAX		
SIZE	CAGE CODE	DRAWN BY	ITEM NO.	REV
A	53919	KGLEBOVA	PE3W17248	A