

NEX10 Male to NEX10 Male Right Angle Low PIM Cable Using SPF-250 Coax

PE3W17855

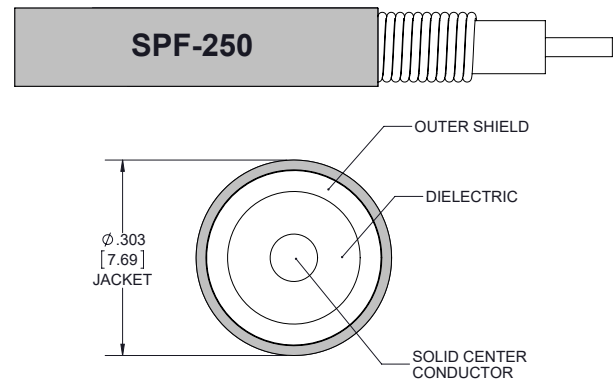


Configuration

- Connector 1: NEX10 Male
- Connector 2: NEX10 Male Right Angle
- Cable Type: SPF-250
- Coax Flex Type: Corrugated

Features

- Max Frequency 5.8 GHz
- Low PIM: -160 dBc Max
- 83% Phase Velocity
- FRPE Jacket



Applications

- General Purpose
- Laboratory Use
- Low PIM Applications

Description

Pasternack's PE3W17855 NEX10 male to NEX10 male right angle cable using SPF-250 coax is part of our full line of RF components available for same-day shipping. Pasternack's corrugated RF cable assemblies are ideal for applications where durability and high power are needed. This Pasternack NEX10 to NEX10 cable assembly has a male to male gender configuration with 50 ohm corrugated SPF-250 coax. The PE3W17855 NEX10 male to NEX10 male cable assembly operates to 5.8 GHz. Our low PIM design also offers excellent passive intermodulation performance with PIM levels better than -160 dBc. The right angle NEX10 interface on the SPF-250 cable allows for easier connections in tight spaces.

Custom versions of most RF cable assemblies can be built and shipped same day. Custom cable assembly lengths can be obtained by specifying the desired length on the web site at time of order or by contacting a sales representative. Other available RF cable assembly value added services include connector orientation or clocking, heat shrink booting and custom labeling. RF testing can also be performed to document the electrical performance of your cable assembly.

Electrical Specifications

| Description | Minimum | Typical | Maximum | Units |
|-------------------------|---------|--------------|---------|--------------|
| Frequency Range | DC | | 5.8 | GHz |
| VSWR | | | 1.4:1 | |
| Velocity of Propagation | | 83 | | % |
| Passive Intermodulation | | | -160 | dBc |
| Capacitance | | 24 [78.74] | | pF/ft [pF/m] |
| Inductance | | 0.054 [0.18] | | uH/ft [uH/m] |

Specifications by Frequency

NEX10 Male to NEX10 Male Right Angle Low PIM Cable Using SPF-250 Coax

PE3W17855



| Part Number | Length | Description | F1 | F2 | F3 | F4 | F5 | Units | Weight (lbs) |
|----------------|--------------------------|-----------------------|------|------|------|-------|-------|-------|--------------|
| | | Frequency | 450 | 500 | 1000 | 2500 | 5800 | MHz | |
| PE3W17855 | Custom Lengths Available | Insertion Loss (Typ.) | 0.04 | 0.04 | 0.06 | 0.103 | 0.167 | dB/ft | |
| | | | 0.14 | 0.14 | 0.2 | 0.34 | 0.55 | dB/m | |
| PE3W17855-12 | 12 inch | Insertion Loss (Typ.) | 0.35 | 0.35 | 0.36 | 0.41 | 0.47 | dB | 0.102 |
| PE3W17855-24 | 24 inch | Insertion Loss (Typ.) | 0.39 | 0.39 | 0.42 | 0.51 | 0.64 | dB | 0.155 |
| PE3W17855-36 | 36 inch | Insertion Loss (Typ.) | 0.43 | 0.43 | 0.48 | 0.61 | 0.8 | dB | 0.207 |
| PE3W17855-60 | 60 inch | Insertion Loss (Typ.) | 0.51 | 0.51 | 0.6 | 0.82 | 1.14 | dB | 0.311 |
| PE3W17855-50CM | 50 CM | Insertion Loss (Typ.) | 0.37 | 0.37 | 0.4 | 0.47 | 0.58 | dB | 0.136 |

The insertion loss data for the base model does not include loss due to the connectors. Each length includes insertion loss due to the connectors.

| | |
|-----------------------------|----------------|
| Loss due to Connector 1: | 0.1 dB |
| Loss due to Connector 2: | 0.2 dB |
| Base Weight: | 0.102 pounds |
| Additional Weight per Inch: | 0.00434 pounds |

Mechanical Specifications

Cable Assembly

| | |
|----------------|---------------------|
| Width/Diameter | 0.5 in [12.7 mm] |
| Weight | 0.102 lbs [46.27 g] |

Cable

| | |
|--|-----------------------|
| Cable Type | SPF-250 |
| Impedance | 50 Ohms |
| Inner Conductor Type | Solid |
| Inner Conductor Material and Plating | Copper Clad Aluminum |
| Dielectric Type | Foam PE |
| Number of Shields | 1 |
| Outer Conductor 1 Material and Plating | Copper |
| Jacket Material | FRPE, Black |
| Jacket Diameter | 0.303 in [7.7 mm] |
| One Time Minimum Bend Radius | 1.25 in [31.75 mm] |
| Bending Moment | 0.5 lbs-ft [0.68 N-m] |

Connectors

| Description | Connector 1 | Connector 2 |
|-----------------------------------|------------------|------------------------|
| Type | NEX10 Male | NEX10 Male Right Angle |
| Impedance | 50 Ohms | 50 Ohms |
| Configuration | Straight | Right Angle |
| Contact Material and Plating | Brass, Silver | Brass, Silver |
| Dielectric Type | PTFE | PTFE |
| Body Material and Plating | Brass, Tri-Metal | Brass, Tri-Metal |
| Coupling Nut Material and Plating | Brass, Tri-Metal | Brass, Tri-Metal |

NEX10 Male to NEX10 Male Right Angle Low PIM Cable Using SPF-250 Coax



PE3W17855

Environmental Specifications

Operating Range Temperature -40 to +85 deg C

Compliance Certifications (see [product page](#) for current document)

Plotted and Other Data

Notes:

Typical Performance Data

How to Order

Part Number Configuration: **PE3W17855 - xx uu**

Unit of Measure:
cm = Centimeters
<blank> = Inches

Length

Base Number

Example: PE3W17855-12 = 12 inches long cable
PE3W17855-100cm = 100 cm long cable

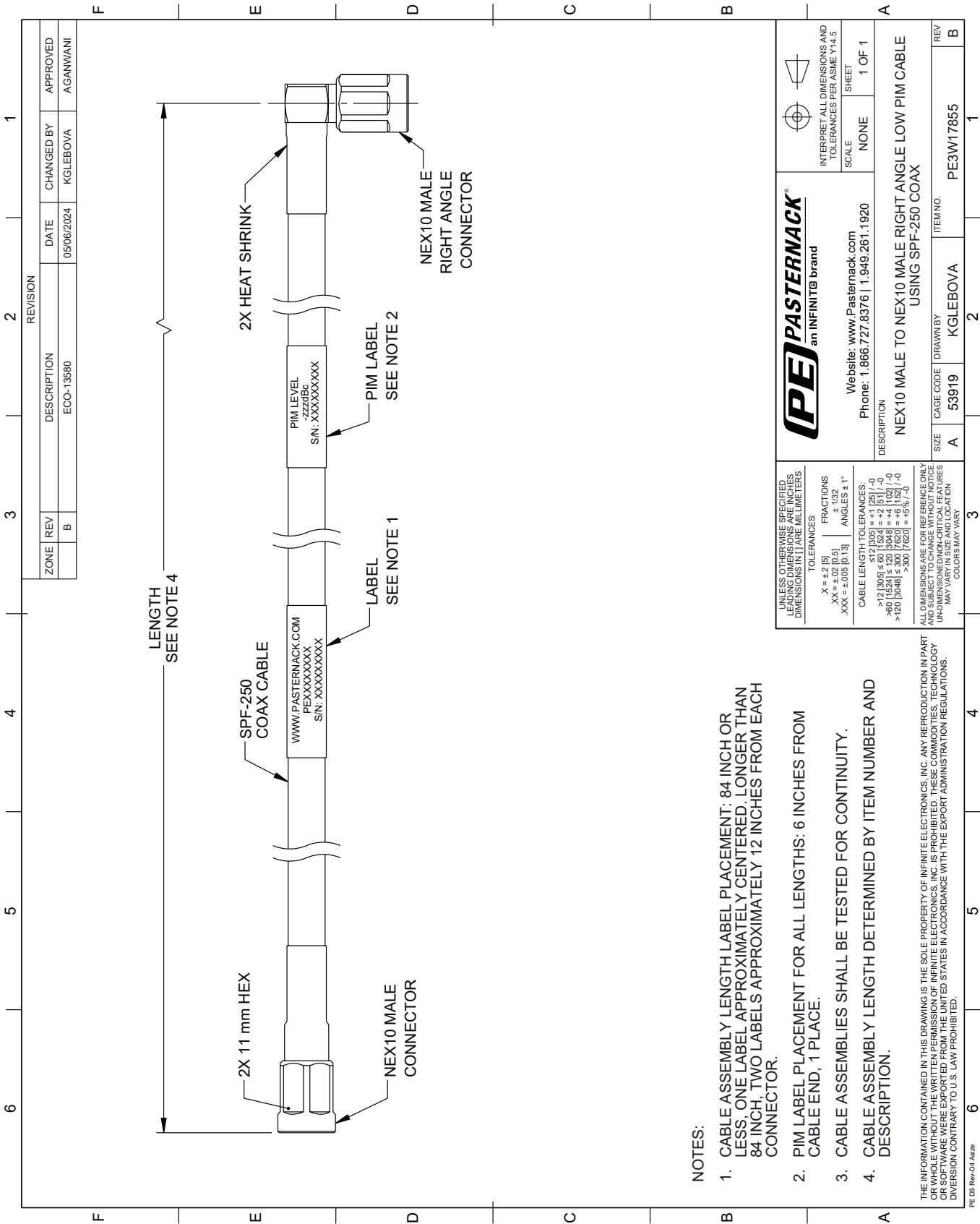
NEX10 Male to NEX10 Male Right Angle Low PIM Cable Using SPF-250 Coax from Pasternack Enterprises has same day shipment for domestic and International orders. Our RF, microwave and millimeter wave products maintain a 99.4% availability and are part of the broadest selection in the industry.

Click the following link (or enter part number in "SEARCH" on website) to obtain additional part information including price, inventory and certifications: [NEX10 Male to NEX10 Male Right Angle Low PIM Cable Using SPF-250 Coax PE3W17855](#)

URL: <https://www.pasternack.com/nex10-male-to-nex10-male-low-pim-cable-using-spf-250-pe3w17855-p.aspx>

The information contained within this document is accurate to the best of our knowledge and representative of the part described herein. It may be necessary to make modifications to the part and/or the documentation of the part in order to implement improvements. Pasternack Enterprises reserves the right to make such changes as required. Unless otherwise stated, all specifications are nominal. Pasternack Enterprises does not make any representation or warranty regarding the suitability of the part described herein for any particular purpose, and Pasternack Enterprises does not assume liability arising out of the use of any part or document.

PE3W17855 CAD Drawing
NEX10 Male to NEX10 Male Right Angle Low PIM Cable Using SPF-250 Coax



NOTES:

- 1. CABLE ASSEMBLY LENGTH LABEL PLACEMENT: 84 INCH OR LESS, ONE LABEL APPROXIMATELY CENTERED, LONGER THAN 84 INCH, TWO LABELS APPROXIMATELY 12 INCHES FROM EACH CONNECTOR.
- 2. PIM LABEL PLACEMENT FOR ALL LENGTHS: 6 INCHES FROM CABLE END, 1 PLACE.
- 3. CABLE ASSEMBLIES SHALL BE TESTED FOR CONTINUITY.
- 4. CABLE ASSEMBLY LENGTH DETERMINED BY ITEM NUMBER AND DESCRIPTION.

THE INFORMATION CONTAINED IN THIS DRAWING IS THE SOLE PROPERTY OF INFINITE ELECTRONICS, INC. ANY REPRODUCTION IN PART OR WHOLE WITHOUT THE WRITTEN PERMISSION OF INFINITE ELECTRONICS, INC. IS PROHIBITED. THESE COMMODITIES, TECHNOLOGY OR SOFTWARE WERE EXPORTED FROM THE UNITED STATES IN ACCORDANCE WITH THE EXPORT ADMINISTRATION REGULATIONS. DIVISION CONTRARY TO U.S. LAW PROHIBITED.

| | | | | | |
|---|--|---|--|--|--|
| UNLESS OTHERWISE SPECIFIED, LEADING DIMENSIONS ARE IN INCHES, DIMENSIONS IN [] ARE MILLIMETERS | | PE PASTERNAK an INFINITI® brand | | INTERPRET ALL DIMENSIONS AND TOLERANCES PER ASME Y14.5 | |
| TOLERANCES: | | Website: www.Pasternack.com | | SCALE | |
| .X = ±.2 [5] | | Phone: 1.866.727.8376 1.949.261.1920 | | NONE | |
| .XX = ±.02 [0.5] | | | | SHEET | |
| .XXX = ±.005 [0.13] | | | | 1 OF 1 | |
| FRACTIONS | | | | | |
| ± 1/32 | | | | | |
| ANGLES ± 1° | | | | | |
| CABLE LENGTH TOLERANCES: | | | | | |
| ±12 [305] ±.60 [1524] = ±1 [25] / -0 | | | | | |
| >12 [305] ≤ 60 [1524] = ±4 [102] / -0 | | | | | |
| >60 [1524] ≤ 120 [3048] = ±4 [102] / -0 | | | | | |
| >120 [3048] ≤ 300 [7620] = ±5% / -0 | | | | | |
| ALL DIMENSIONS ARE FOR REFERENCE ONLY. UNLESS OTHERWISE SPECIFIED, DIMENSIONS MAY VARY IN SIZE AND LOCATION. COLORS MAY VARY. | | | | | |
| | | DESCRIPTION | | ITEM NO. | |
| | | NEX10 MALE TO NEX10 MALE RIGHT ANGLE LOW PIM CABLE USING SPF-250 COAX | | PE3W17855 | |
| | | SIZE | | REV | |
| | | A | | B | |
| | | CAGE CODE | | DRAWN BY | |
| | | 53919 | | KGLEBOVA | |
| | | | | | |