

SMPS Female to SMPS Female VITA 67.3 Cable Using PE-047SR Coax



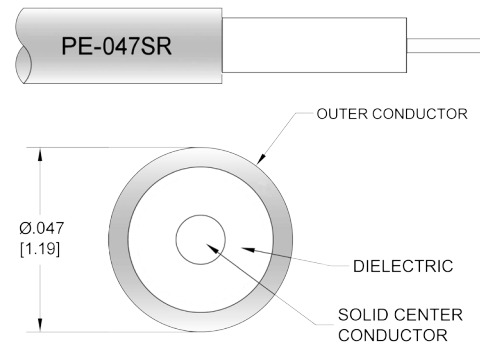
PE3W18851

Configuration

- Connector 1: SMPS Female
- Connector 2: SMPS Female
- Cable Type: PE-047SR
- Coax Flex Type: Semi-Rigid

Features

- Max Frequency 40 GHz



Applications

- General Purpose
- Laboratory Use

Description

Pasternack's PE3W18851 SMPS female to SMPS female cable using PE-047SR coax is part of our full line of RF components available for same-day shipping. Pasternack's semi-rigid RF cable assemblies are ideal for high performance applications and can be formed, using proper tooling, to the routing pattern required. This Pasternack SMPS to SMPS cable assembly has a female to female gender configuration with 50 ohm semi-rigid PE-047SR coax. The PE3W18851 SMPS female to SMPS female cable assembly operates to 40 GHz.

Custom versions of most RF cable assemblies can be built and shipped same day. Custom cable assembly lengths can be obtained by specifying the desired length on the web site at time of order or by contacting a sales representative. Other available RF cable assembly value added services include connector orientation or clocking, heat shrink booting and custom labeling. RF testing can also be performed to document the electrical performance of your cable assembly.

Electrical Specifications

Description	Minimum	Typical	Maximum	Units
Frequency Range	DC		40	GHz
VSWR			1.4:1	

Specifications by Frequency

SMPS Female to SMPS Female VITA
67.3 Cable Using PE-047SR Coax



PE3W18851

Part Number	Length	Description	F1	F2	F3	F4	Units	Weight (lbs)
			Frequency	2500	5000	10000	20000	
PE3W18851	Custom Lengths Available	Insertion Loss (Typ.)	0.55	0.8	1.3	1.9	dB/ft	
			1.81	2.63	4.27	6.24	dB/m	
PE3W18851-6	6 In	Insertion Loss (Typ.)	0.48	0.6	0.85	1.15	dB	0.004
PE3W18851-9	9 In	Insertion Loss (Typ.)	0.62	0.8	1.18	1.63	dB	0.005
PE3W18851-12	12 In	Insertion Loss (Typ.)	0.75	1	1.5	2.1	dB	0.006
PE3W18851-18	18 In	Insertion Loss (Typ.)	1.03	1.4	2.15	3.05	dB	0.008
PE3W18851-24	24 In	Insertion Loss (Typ.)	1.3	1.8	2.8	4	dB	0.01

The insertion loss data for the base model does not include loss due to the connectors. Each length includes insertion loss due to the connectors.

Loss due to Connector 1:	0.1 dB
Loss due to Connector 2:	0.1 dB
Base Weight:	0.0058 pounds
Additional Weight per Inch:	0.00034 pounds

Mechanical Specifications

Cable Assembly

Width/Diameter	0.5 in [12.7 mm]
Weight	0.006 lbs [2.72 g]

Cable

Cable Type	PE-047SR
Impedance	50 Ohms
Inner Conductor Type	Solid
Inner Conductor Material and Plating	Copper Clad Steel, Silver
Dielectric Type	PTFE
Number of Shields	1
Outer Conductor 1 Material and Plating	Copper
Repeated Minimum Bend Radius	0.05 in [1.27 mm]

Connectors

Description	Connector 1	Connector 2
Type	SMPS Female	SMPS Female
Impedance	50 Ohms	50 Ohms
Configuration	Straight	Straight
Contact Material and Plating	Beryllium Copper, Gold	Beryllium Copper, Gold
Dielectric Type	PTFE	PTFE
Outer Conductor Material and Plating	Beryllium Copper, Gold	Beryllium Copper, Gold
Body Material and Plating	Passivated Stainless Steel	Passivated Stainless Steel

Environmental Specifications

Operating Range Temperature	-55 to +100 deg C
-----------------------------	-------------------

SMPS Female to SMPS Female VITA
67.3 Cable Using PE-047SR Coax



PE3W18851

Compliance Certifications (see [product page](#) for current document)

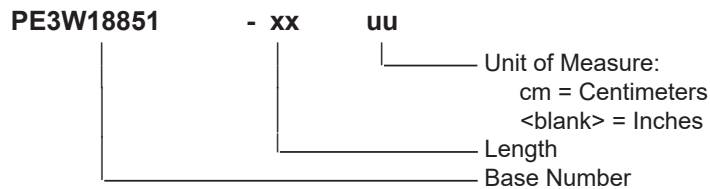
Plotted and Other Data

Notes:

Typical Performance Data

How to Order

Part Number Configuration:



Example: PE3W18851-12 = 12 inches long cable
PE3W18851-100cm = 100 cm long cable

SMPS Female to SMPS Female VITA 67.3 Cable Using PE-047SR Coax from Pasternack Enterprises has same day shipment for domestic and International orders. Our RF, microwave and millimeter wave products maintain a 99.4% availability and are part of the broadest selection in the industry.

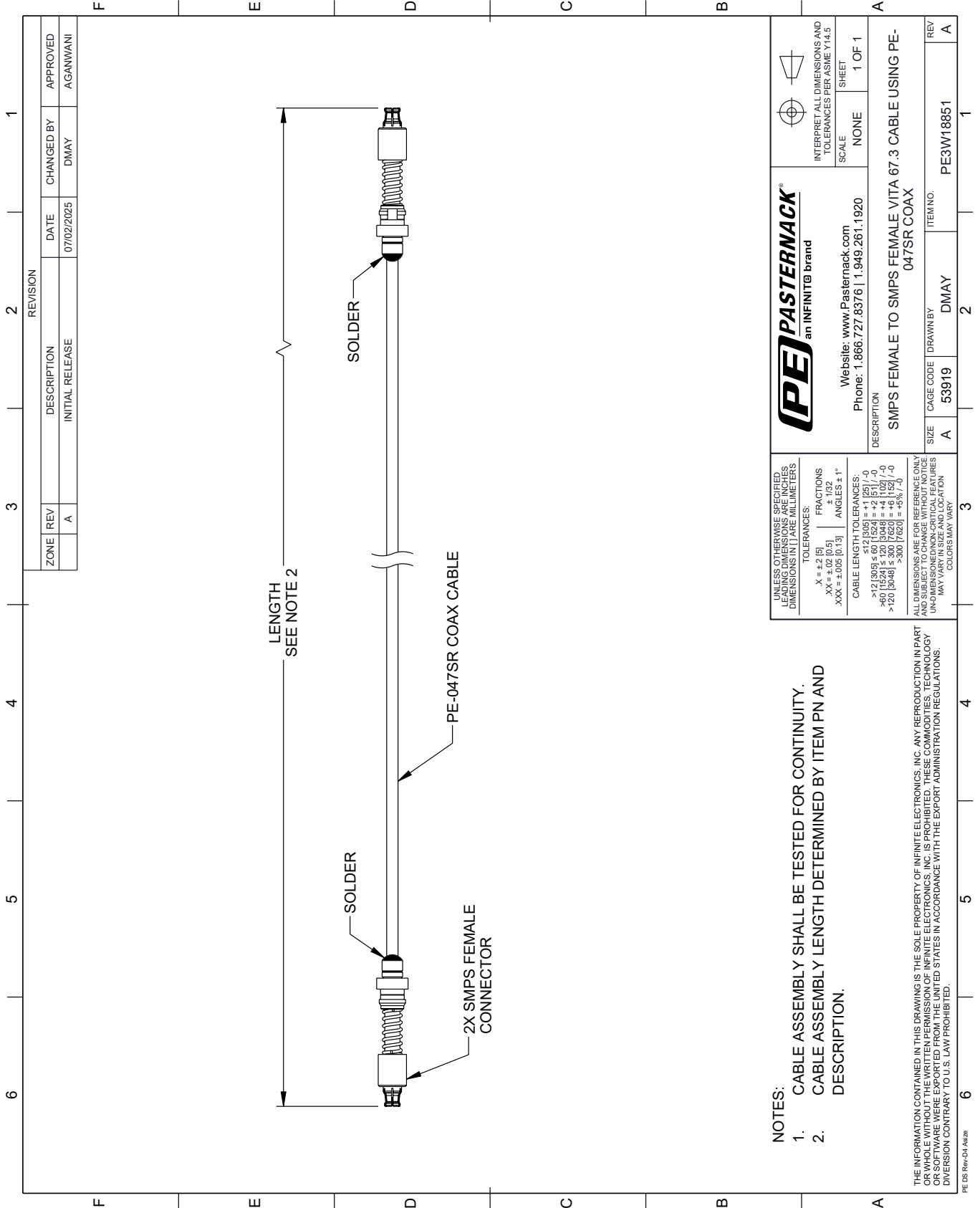
Click the following link (or enter part number in "SEARCH" on website) to obtain additional part information including price, inventory and certifications: [SMPS Female to SMPS Female VITA 67.3 Cable Using PE-047SR Coax PE3W18851](#)

URL: <https://www.pasternack.com/smps-female-to-smps-female-vita-67.3-cable-using-pe-047sr-pe3w18851-p.aspx>

The information contained within this document is accurate to the best of our knowledge and representative of the part described herein. It may be necessary to make modifications to the part and/or the documentation of the part in order to implement improvements. Pasternack Enterprises reserves the right to make such changes as required. Unless otherwise stated, all specifications are nominal. Pasternack Enterprises does not make any representation or warranty regarding the suitability of the part described herein for any particular purpose, and Pasternack Enterprises does not assume liability arising out of the use of any part or document.

PE3W18851 CAD Drawing

SMPS Female to SMPS Female VITA 67.3 Cable Using PE-047SR Coax



REVISION		DATE	CHANGED BY	APPROVED
ZONE	REV			
	A	07/02/2025	DMAY	AGANWANI
DESCRIPTION				
INITIAL RELEASE				

NOTES:

- CABLE ASSEMBLY SHALL BE TESTED FOR CONTINUITY.
- CABLE ASSEMBLY LENGTH DETERMINED BY ITEM PN AND DESCRIPTION.

UNLESS OTHERWISE SPECIFIED, LEADING DIMENSIONS ARE IN INCHES AND TRAILING DIMENSIONS ARE IN MILLIMETERS.

TOLERANCES:

.X = ±.2 [5]	FRACTIONS
.XX = ±.02 [0.5]	± 1/32
.XXX = ±.005 [0.13]	ANGLES ± 1°

CABLE LENGTH TOLERANCES:

>12 [305] ≤ 60 [1524]	± 1 [25] / -0
>60 [1524] ≤ 120 [3048]	± 4 [102] / -0
>120 [3048] ≤ 300 [7620]	± 8 [203] / -0

ALL DIMENSIONS ARE FOR REFERENCE ONLY. UNDIMENSIONED/NON-CRITICAL FEATURES MAY VARY IN SIZE AND LOCATION. COLORS MAY VARY.

PE PASTERNAK
an INFINITE brand

Website: www.Pasternack.com
Phone: 1.866.727.8376 | 1.949.261.1920

INTERPRET ALL DIMENSIONS AND TOLERANCES PER ASME Y14.5

SCALE: NONE
SHEET: 1 OF 1

DESCRIPTION: SMPS FEMALE TO SMPS FEMALE VITA 67.3 CABLE USING PE-047SR COAX

SIZE	CAGE CODE	DRAWN BY	ITEM NO.	REV
A	53919	DMAY	PE3W18851	A

THE INFORMATION CONTAINED IN THIS DRAWING IS THE SOLE PROPERTY OF INFINITE ELECTRONICS, INC. ANY REPRODUCTION IN PART OR WHOLE WITHOUT THE WRITTEN PERMISSION OF INFINITE ELECTRONICS, INC. IS PROHIBITED. THESE COMMODITIES, TECHNOLOGY OR SERVICES ARE EXPORTED FROM THE UNITED STATES IN ACCORDANCE WITH THE EXPORT ADMINISTRATION REGULATIONS. DIVERSION CONTRARY TO U.S. LAW PROHIBITED.

PE DS Rev-04 Add2