

2.92mm Female Bulkhead to 2.92mm Male Right Angle Cable Using PE-034SR Coax



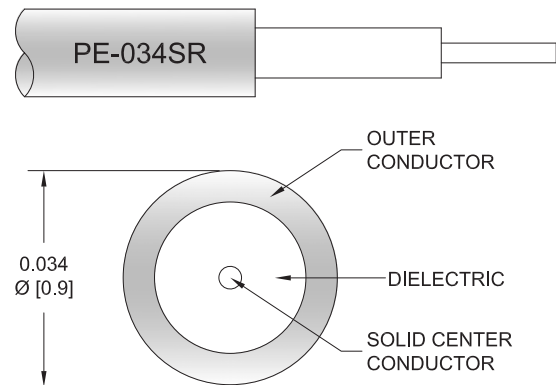
PE3W20296

Configuration

- Connector 1: 2.92mm Female Bulkhead
- Connector 2: 2.92mm Male Right Angle
- Cable Type: PE-034SR
- Coax Flex Type: Semi-Rigid

Features

- Max Frequency 40 GHz
- 500 Mating Cycles



Applications

- General Purpose
- Laboratory Use

Description

Pasternack's PE3W20296 2.92mm female bulkhead to 2.92mm male right angle cable using PE-034SR coax is part of our full line of RF components available for same-day shipping. Pasternack's semi-rigid RF cable assemblies are ideal for high performance applications and can be formed, using proper tooling, to the routing pattern required. This Pasternack 2.92mm to 2.92mm cable assembly has a female to male gender configuration with 50 ohm semi-rigid PE-034SR coax. The PE3W20296 2.92mm female to 2.92mm male cable assembly operates to 40 GHz. The right angle 2.92mm interface on the PE-034SR cable allows for easier connections in tight spaces. Our RF cable assembly with 2.92mm bulkhead interface allows designers to create external connections on their product enclosures, and can be used in a variety of other rack mount and panel mount applications.

Custom versions of most RF cable assemblies can be built and shipped same day. Custom cable assembly lengths can be obtained by specifying the desired length on the web site at time of order or by contacting a sales representative. Other available RF cable assembly value added services include connector orientation or clocking, heat shrink booting and custom labeling. RF testing can also be performed to document the electrical performance of your cable assembly.

Electrical Specifications

Description	Minimum	Typical	Maximum	Units
Frequency Range	DC		40	GHz
VSWR			1.4:1	
Dielectric Withstanding Voltage (AC)			750	Vrms

Specifications by Frequency

2.92mm Female Bulkhead to 2.92mm Male Right Angle Cable Using PE-034SR Coax



PE3W20296

Part Number	Length	Description	F1	F2	F3	F4	Units	Weight (lbs)
			Frequency	2500	5000	10000	20000	
PE3W20296	Custom Lengths Available	Insertion Loss (Typ.)	0.816	1.17	1.9	2.8	dB/ft	
			2.68	3.84	6.24	9.19	dB/m	
PE3W20296-3	3 In	Insertion Loss (Typ.)	0.34	0.48	0.73	1.06	dB	0.032
PE3W20296-6	6 In	Insertion Loss (Typ.)	0.54	0.77	1.21	1.76	dB	0.033
PE3W20296-12	12 In	Insertion Loss (Typ.)	0.95	1.35	2.16	3.16	dB	0.036
PE3W20296-18	18 In	Insertion Loss (Typ.)	1.36	1.94	3.11	4.56	dB	0.039
PE3W20296-24	24 In	Insertion Loss (Typ.)	1.76	2.52	4.06	5.96	dB	0.042

The insertion loss data for the base model does not include loss due to the connectors. Each length includes insertion loss due to the connectors.

Loss due to Connector 1: 0.04*SQRT(FGHz) dB

Loss due to Connector 2: 0.04*SQRT(FGHz) dB

Base Weight: 0.036 pounds

Additional Weight per Inch: 0.0005 pounds

Mechanical Specifications

Cable Assembly

Width/Diameter: 0.5 in [12.7 mm]
Weight: 0.014 lbs [6.35 g]

Cable

Cable Type: PE-034SR
Impedance: 50 Ohms
Inner Conductor Type: Solid
Inner Conductor Material and Plating: Copper Clad Steel, Silver
Dielectric Type: PTFE
Number of Shields: 1
Outer Conductor 1 Material and Plating: Copper
Jacket Material: Tan
Repeated Minimum Bend Radius: 0.5 in [12.7 mm]

Connectors

Description	Connector 1	Connector 2
Type	2.92mm Female Bulkhead	2.92mm Male Right Angle
Impedance	50 Ohms	50 Ohms
Configuration	Straight	Right Angle
Mating Cycles	500	500
Contact Material and Plating	Beryllium Copper, Gold over Nickel	Beryllium Copper, Gold over Nickel
Dielectric Type	PPO	PPO
Body Material and Plating	Stainless Steel, Passivated	Stainless Steel, Passivated
Coupling Nut Material and Plating	Stainless Steel, Passivated	Stainless Steel, Passivated
Torque	11.47 in-lbs 1.3 Nm	11.47 in-lbs 1.3 Nm

2.92mm Female Bulkhead to 2.92mm Male Right Angle Cable Using PE-034SR Coax



PE3W20296

Environmental Specifications

Operating Range Temperature -55 to +100 deg C

Compliance Certifications (see [product page](#) for current document)

Plotted and Other Data

Notes:

Typical Performance Data

How to Order

Part Number Configuration: **PE3W20296 - xx uu**

PE3W20296: Base Number
 - xx: Length
 uu: Unit of Measure:
 cm = Centimeters
 <blank> = Inches

Example: PE3W20296-12 = 12 inches long cable
 PE3W20296-100cm = 100 cm long cable

2.92mm Female Bulkhead to 2.92mm Male Right Angle Cable Using PE-034SR Coax from Pasternack Enterprises has same day shipment for domestic and International orders. Our RF, microwave and millimeter wave products maintain a 99.4% availability and are part of the broadest selection in the industry.

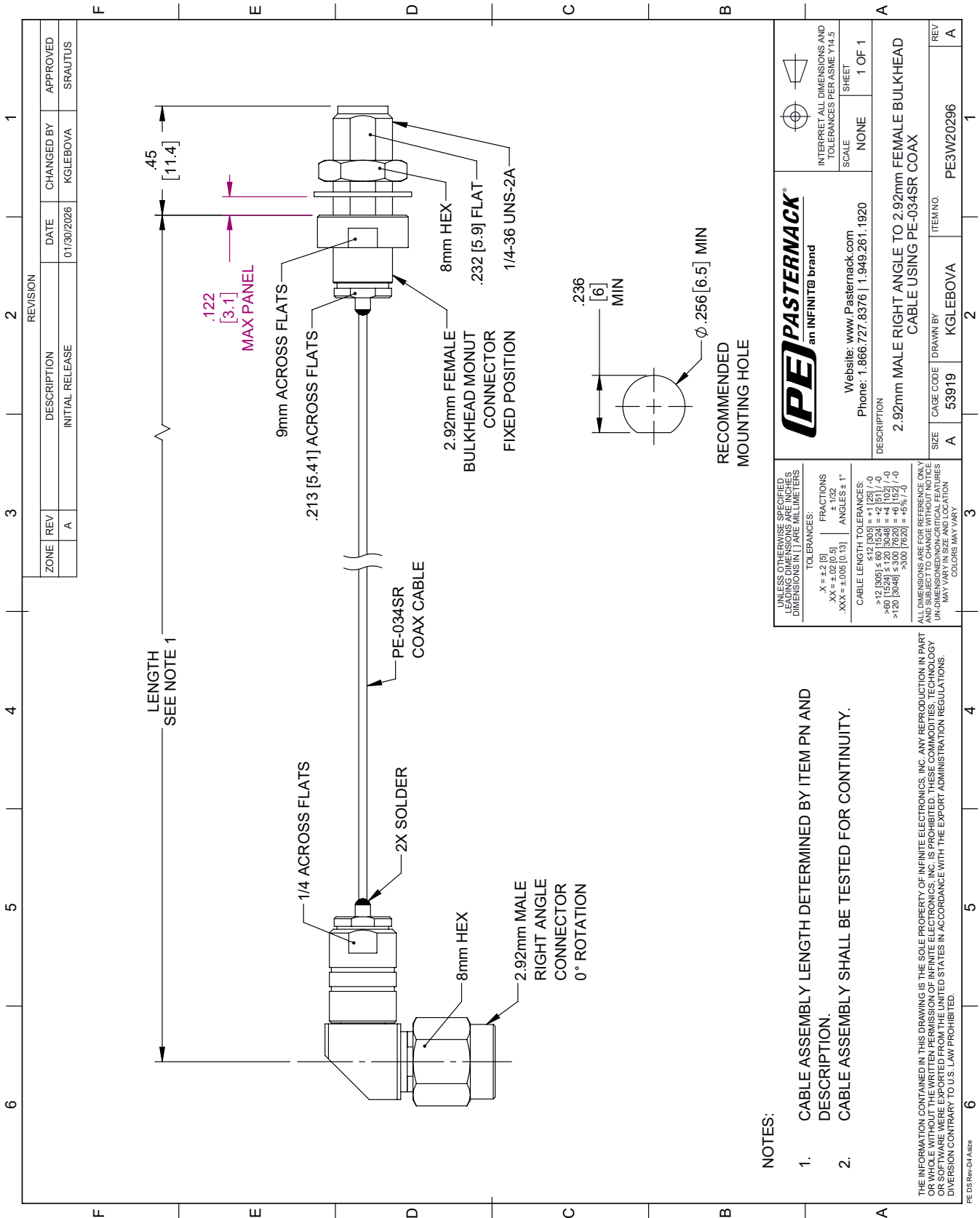
Click the following link (or enter part number in "SEARCH" on website) to obtain additional part information including price, inventory and certifications: [2.92mm Female Bulkhead to 2.92mm Male Right Angle Cable Using PE-034SR Coax PE3W20296](#)

URL: <https://www.pasternack.com/2.92mm-female-bulkhead-to-2.92mm-male-cable-using-pe-034sr-pe3w20296-p.aspx>

The information contained within this document is accurate to the best of our knowledge and representative of the part described herein. It may be necessary to make modifications to the part and/or the documentation of the part in order to implement improvements. Pasternack Enterprises reserves the right to make such changes as required. Unless otherwise stated, all specifications are nominal. Pasternack Enterprises does not make any representation or warranty regarding the suitability of the part described herein for any particular purpose, and Pasternack Enterprises does not assume liability arising out of the use of any part or document.

PE3W20296 CAD Drawing

2.92mm Female Bulkhead to 2.92mm Male Right Angle Cable Using PE-034SR Coax



NOTES:

1. CABLE ASSEMBLY LENGTH DETERMINED BY ITEM PN AND DESCRIPTION.
2. CABLE ASSEMBLY SHALL BE TESTED FOR CONTINUITY.

THE INFORMATION CONTAINED IN THIS DRAWING IS THE SOLE PROPERTY OF INFINITE ELECTRONICS, INC. ANY REPRODUCTION IN PART OR WHOLE WITHOUT THE WRITTEN PERMISSION OF INFINITE ELECTRONICS, INC. IS PROHIBITED. THESE COMMODITIES, TECHNOLOGY OR SOFTWARE WERE EXPORTED FROM THE UNITED STATES IN ACCORDANCE WITH THE EXPORT ADMINISTRATION REGULATIONS. DIVERSION CONTRARY TO U.S. LAW PROHIBITED.

<p>PE PASTERNAK an INFINIT[®] brand</p>		<p>INTERPRET ALL DIMENSIONS AND TOLERANCES PER ASME Y14.5</p> <p>SCALE NONE</p> <p>SHEET 1 OF 1</p>
<p>Website: www.Pasternack.com</p> <p>Phone: 1.866.727.8376 1.949.261.1920</p>		<p>DESCRIPTION</p> <p>2.92mm MALE RIGHT ANGLE TO 2.92mm FEMALE BULKHEAD CABLE USING PE-034SR COAX</p>
<p>UNLESS OTHERWISE SPECIFIED, LEADING DIMENSIONS ARE IN INCHES AND DIMENSIONS IN [] ARE MILLIMETERS</p> <p>TOLERANCES:</p> <p>X = ±.2 [5] FRACTIONS ±.102</p> <p>.XX = ±.02 [0.5] ANGLES ± 1°</p> <p>.XXX = ±.005 [0.13]</p> <p>CABLE LENGTH TOLERANCES:</p> <p>≤ 12 [305] = +.1 [25] / -0</p> <p>> 12 [305] ≤ 60 [1524] = +.2 [51] / -0</p> <p>> 60 [1524] ≤ 300 [7620] = +.4 [102] / -0</p> <p>> 300 [7620] = +.6 [152] / -0</p>	<p>ALL DIMENSIONS ARE FOR REFERENCE ONLY AND SUBJECT TO CHANGE WITHOUT NOTICE UNLESS DIMENSIONED OTHERWISE. CRITICAL FEATURES MAY VARY WITHOUT NOTICE. COLORS MAY VARY.</p>	<p>REV A</p> <p>ITEM NO. PE3W20296</p> <p>SIZE A</p> <p>CAGE CODE 53919</p> <p>DRAWN BY KGLEBOVA</p>