

2.92mm Male Right Angle to 2.92mm Female Bulkhead Cable Using PE-P047 Coax



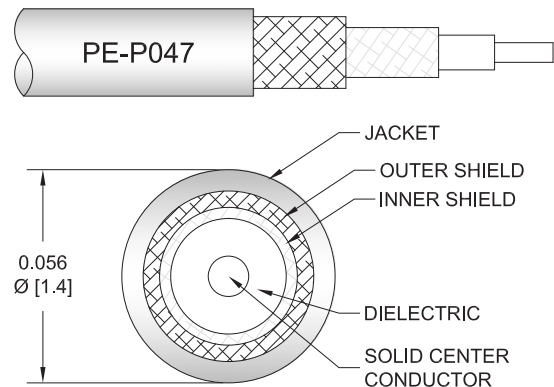
PE3W20803

Configuration

- Connector 1: 2.92mm Male Right Angle
- Connector 2: 2.92mm Female Bulkhead
- Cable Type: PE-P047
- Coax Flex Type: Flexible

Features

- Max Frequency 40 GHz
- Shielding Effectivity > 90 dB
- 70% Phase Velocity
- Double Shielded
- FEP Jacket
- 5000 Mating Cycles



Applications

- General Purpose
- Laboratory Use

Description

Pasternack's PE3W20803 2.92mm male right angle to 2.92mm female bulkhead cable using PE-P047 coax is part of our full line of RF components available for same-day shipping. Pasternack's flexible RF cable assemblies are ideal for applications where tight bends and flexure are required. This Pasternack 2.92mm to 2.92mm cable assembly has a male to female gender configuration with 50 ohm flexible PE-P047 coax. The PE3W20803 2.92mm male to 2.92mm female cable assembly operates to 40 GHz. The right angle 2.92mm interface on the PE-P047 cable allows for easier connections in tight spaces. Our RF cable assembly with 2.92mm bulkhead interface allows designers to create external connections on their product enclosures, and can be used in a variety of other rack mount and panel mount applications. The double shielding of this Pasternack cable assembly provides excellent shielding effectiveness of better than 90 dB.

Custom versions of most RF cable assemblies can be built and shipped same day. Custom cable assembly lengths can be obtained by specifying the desired length on the web site at time of order or by contacting a sales representative. Other available RF cable assembly value added services include connector orientation or clocking, heat shrink booting and custom labeling. RF testing can also be performed to document the electrical performance of your cable assembly.

Electrical Specifications

Description	Minimum	Typical	Maximum	Units
Frequency Range	DC		40	GHz
VSWR			1.4:1	
Velocity of Propagation		70		%
RF Shielding	90			dB
Capacitance		29 [95.14]		pF/ft [pF/m]

Specifications by Frequency

2.92mm Male Right Angle to 2.92mm Female Bulkhead Cable Using PE-P047 Coax



PE3W20803

Part Number	Length	Description	F1	F2	F3	F4	F5	Units	Weight (lbs)
			Frequency		2500	5000	10000	20000	
PE3W20803	Custom Lengths Available	Insertion Loss (Typ.)	0.539	0.786	1.169	1.754	2.683	dB/ft	
			1.77	2.58	3.84	5.76	8.81	dB/m	
PE3W20803-6	6 In	Insertion Loss (Typ.)	0.4	0.58	0.84	1.24	1.85	dB	0.032
PE3W20803-12	12 In	Insertion Loss (Typ.)	0.67	0.97	1.43	2.12	3.19	dB	0.033
PE3W20803-18	18 In	Insertion Loss (Typ.)	0.94	1.36	2.01	2.99	4.54	dB	0.035
PE3W20803-24	24 In	Insertion Loss (Typ.)	1.21	1.76	2.6	3.87	5.88	dB	0.036
PE3W20803-36	36 In	Insertion Loss (Typ.)	1.75	2.54	3.76	5.62	8.56	dB	0.039

The insertion loss data for the base model does not include loss due to the connectors. Each length includes insertion loss due to the connectors.

Loss due to Connector 1: 0.04*SQRT(FGHz) dB
 Loss due to Connector 2: 0.04*SQRT(FGHz) dB
 Base Weight: 0.033 pounds
 Additional Weight per Inch: 0.00025 pounds

Mechanical Specifications

Cable Assembly

Width/Diameter 0.5 in [12.7 mm]
 Weight 0.028 lbs [12.7 g]

Cable

Cable Type PE-P047
 Impedance 50 Ohms
 Inner Conductor Type Solid
 Inner Conductor Material and Plating Copper, Silver
 Dielectric Type FEP
 Number of Shields 2
 Shield Layer 1 Silver Plated Copper Tape
 Shield Layer 2 Silver Plated Copper Braid
 Jacket Material FEP, Blue
 Jacket Diameter 0.056 in [1.42 mm]
 One Time Minimum Bend Radius 0.2 in [5.08 mm]
 Repeated Minimum Bend Radius 0.4 in [10.16 mm]

2.92mm Male Right Angle to 2.92mm Female Bulkhead Cable Using PE-P047 Coax



PE3W20803

Connectors

Description	Connector 1	Connector 2
Type	2.92mm Male Right Angle	2.92mm Female Bulkhead
Impedance	50 Ohms	50 Ohms
Configuration	Right Angle	Straight
Mating Cycles	5,000	5,000
Contact Material and Plating	Beryllium Copper, Gold over Nickel	Beryllium Copper, Gold over Nickel
Dielectric Type	PPO	PPO
Body Material and Plating	Stainless Steel, Passivated	Stainless Steel, Passivated
Coupling Nut Material and Plating	Stainless Steel, Passivated	Stainless Steel, Passivated
Torque	11.47 in-lbs 1.3 Nm	11.47 in-lbs 1.3 Nm

Environmental Specifications

Operating Range Temperature -55 to +105 deg C

Compliance Certifications (see [product page](#) for current document)

Plotted and Other Data

Notes:

2.92mm Male Right Angle to 2.92mm Female Bulkhead Cable Using PE-P047 Coax



PE3W20803

Typical Performance Data

How to Order

Part Number Configuration:

PE3W20803

- **xx**

uu

Unit of Measure:

cm = Centimeters

<blank> = Inches

Length

Base Number

Example: PE3W20803-12 = 12 inches long cable
PE3W20803-100cm = 100 cm long cable

2.92mm Male Right Angle to 2.92mm Female Bulkhead Cable Using PE-P047 Coax from Pasternack Enterprises has same day shipment for domestic and International orders. Our RF, microwave and millimeter wave products maintain a 99.4% availability and are part of the broadest selection in the industry.

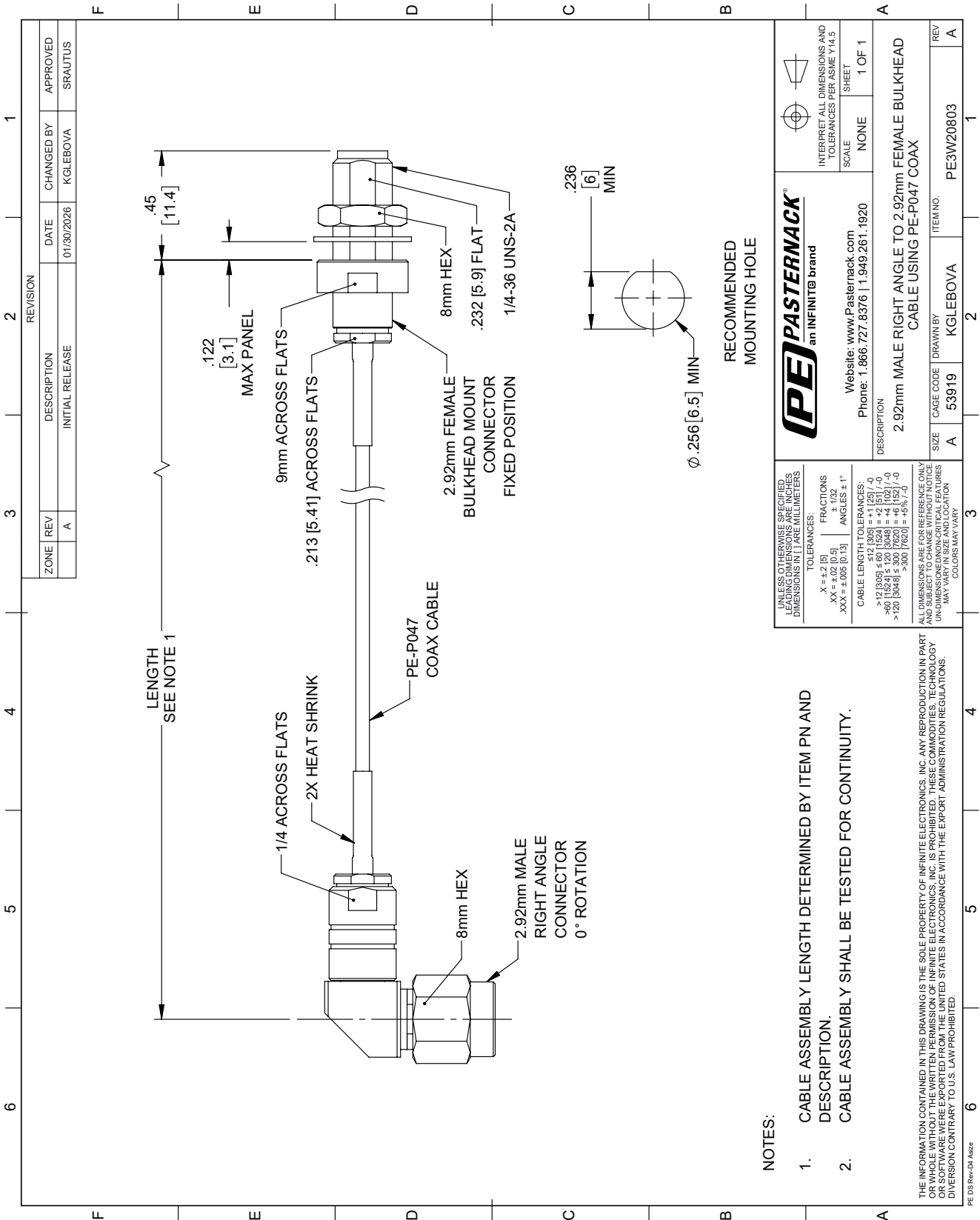
Click the following link (or enter part number in "SEARCH" on website) to obtain additional part information including price, inventory and certifications: [2.92mm Male Right Angle to 2.92mm Female Bulkhead Cable Using PE-P047 Coax PE3W20803](https://www.pasternack.com/2.92mm-male-right-angle-to-2.92mm-female-bulkhead-cable-using-pe-p047-pe3w20803-p.aspx)

URL: <https://www.pasternack.com/2.92mm-male-right-angle-to-2.92mm-female-bulkhead-cable-using-pe-p047-pe3w20803-p.aspx>

The information contained within this document is accurate to the best of our knowledge and representative of the part described herein. It may be necessary to make modifications to the part and/or the documentation of the part in order to implement improvements. Pasternack Enterprises reserves the right to make such changes as required. Unless otherwise stated, all specifications are nominal. Pasternack Enterprises does not make any representation or warranty regarding the suitability of the part described herein for any particular purpose, and Pasternack Enterprises does not assume liability arising out of the use of any part or document.

PE3W20803 CAD Drawing

2.92mm Male Right Angle to 2.92mm Female Bulkhead Cable Using PE-P047 Coax



PE PASTERNAK
an INFINITE® brand

Website: www.Pasternack.com
Phone: 1.866.727.8376 | 1.949.261.1920

INTERPRET ALL DIMENSIONS AND TOLERANCES PER ASME Y14.5

SCALE NONE SHEET 1 OF 1

DESCRIPTION
2.92mm MALE RIGHT ANGLE TO 2.92mm FEMALE BULKHEAD CABLE USING PE-P047 COAX

SIZE	A	CAGE CODE	53919	DRAWN BY	KGLEBOVA	ITEM NO.	PE3W20803
REV	A						