

Mini SMP Female to Mini SMP Female Right Angle Cable Using PE-P086HF Coax



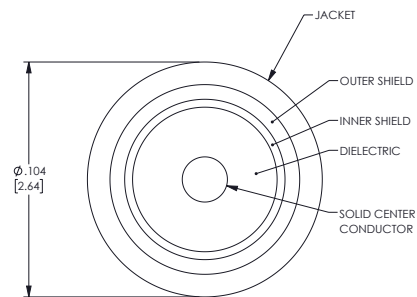
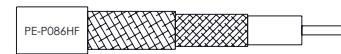
PE3W21722

Configuration

- Connector 1: Mini SMP Female
- Connector 2: Mini SMP Female Right Angle
- Cable Type: PE-P086HF
- Coax Flex Type: Flexible

Features

- Max Frequency 40 GHz
- 70% Phase Velocity
- Double Shielded
- FEP Jacket



Applications

- General Purpose
- Laboratory Use

Description

Pasternack's PE3W21722 Mini SMP female to Mini SMP female right angle cable using PE-P086HF coax is part of our full line of RF components available for same-day shipping. Pasternack's flexible RF cable assemblies are ideal for applications where tight bends and flexure are required. This Pasternack Mini SMP to Mini SMP cable assembly has a female to female gender configuration with 50 ohm flexible PE-P086HF coax. The PE3W21722 Mini SMP female to Mini SMP female cable assembly operates to 40 GHz. The right angle Mini SMP interface on the PE-P086HF cable allows for easier connections in tight spaces. The double shielding of this Pasternack cable assembly provides excellent shielding effectiveness.

Custom versions of most RF cable assemblies can be built and shipped same day. Custom cable assembly lengths can be obtained by specifying the desired length on the web site at time of order or by contacting a sales representative. Other available RF cable assembly value added services include connector orientation or clocking, heat shrink booting and custom labeling. RF testing can also be performed to document the electrical performance of your cable assembly.

Electrical Specifications

Description	Minimum	Typical	Maximum	Units
Frequency Range	DC		40	GHz
VSWR			1.4:1	
Velocity of Propagation		70		%
Capacitance		29.4 [96.46]		pF/ft [pF/m]

Specifications by Frequency

Mini SMP Female to Mini SMP Female
Right Angle Cable Using PE-P086HF Coax



PE3W21722

Part Number	Length	Description	F1	F2	F3	F4	F5	Units	Weight (lbs)
			Frequency	2500	5000	10000	20000	40000	
PE3W21722	Custom Lengths Available	Insertion Loss (Typ.)	0.312	0.457	0.675	1.005	1.548	dB/ft	
			1.03	1.5	2.22	3.3	5.08	dB/m	
PE3W21722-6	6 In	Insertion Loss (Typ.)	0.32	0.46	0.66	0.95	1.41	dB	0.016
PE3W21722-12	12 In	Insertion Loss (Typ.)	0.48	0.69	1	1.46	2.19	dB	0.023
PE3W21722-24	24 In	Insertion Loss (Typ.)	0.79	1.14	1.67	2.46	3.73	dB	0.036
PE3W21722-36	36 In	Insertion Loss (Typ.)	1.1	1.6	2.35	3.47	5.28	dB	0.049
PE3W21722-48	48 In	Insertion Loss (Typ.)	1.41	2.06	3.02	4.47	6.83	dB	0.062

The insertion loss data for the base model does not include loss due to the connectors. Each length includes insertion loss due to the connectors.

Loss due to Connector 1: 0.05*SQRT(FGHz) dB
 Loss due to Connector 2: 0.05*SQRT(FGHz) dB
 Base Weight: 0.023 pounds
 Additional Weight per Inch: 0.00108 pounds

Mechanical Specifications

Cable Assembly

Width/Diameter 0.5 in [12.7 mm]
 Weight 0.025 lbs [11.34 g]

Cable

Cable Type PE-P086HF
 Impedance 50 Ohms
 Inner Conductor Type Solid
 Inner Conductor Material and Plating Copper Clad Steel, Silver
 Dielectric Type PTFE
 Number of Shields 2
 Shield Layer 1 Silver Plated Copper Tape
 Shield Layer 2 Silver Plated Copper Braid
 Jacket Material FEP, Blue
 Jacket Diameter 0.104 in [2.64 mm]
 One Time Minimum Bend Radius 0.52 in [13.21 mm]

Mini SMP Female to Mini SMP Female
Right Angle Cable Using PE-P086HF Coax



PE3W21722

Connectors

Description	Connector 1	Connector 2
Type	Mini SMP Female	Mini SMP Female Right Angle
Specification	MIL-STD-348A	MIL-STD-348A
Impedance	50 Ohms	50 Ohms
Configuration	Straight	Right Angle
Contact Material and Plating	Beryllium Copper, Gold	Beryllium Copper, Gold
Dielectric Type	PTFE	PTFE
Outer Conductor Material and Plating		Beryllium Copper, Gold
Body Material and Plating	Beryllium Copper, Gold	Brass, Gold

Environmental Specifications

Operating Range Temperature -55 to +155 deg C

Compliance Certifications (see [product page](#) for current document)

Plotted and Other Data

Notes:

Mini SMP Female to Mini SMP Female Right Angle Cable Using PE-P086HF Coax



PE3W21722

Typical Performance Data

How to Order

Part Number Configuration:

PE3W21722

- xx

uu

Unit of Measure:

cm = Centimeters

<blank> = Inches

Length

Base Number

Example: PE3W21722-12 = 12 inches long cable
PE3W21722-100cm = 100 cm long cable

Mini SMP Female to Mini SMP Female Right Angle Cable Using PE-P086HF Coax from Pasternack Enterprises has same day shipment for domestic and International orders. Our RF, microwave and millimeter wave products maintain a 99.4% availability and are part of the broadest selection in the industry.

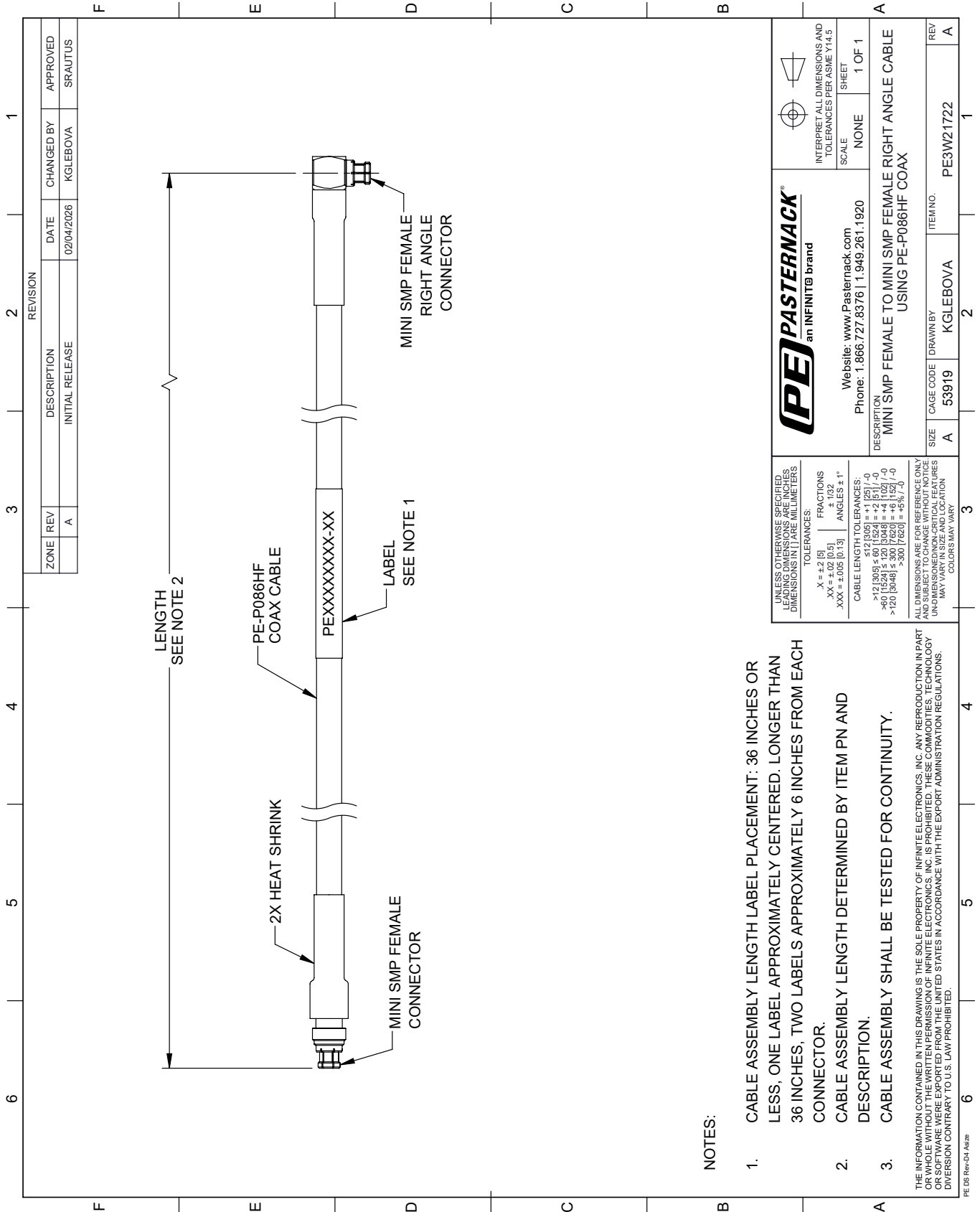
Click the following link (or enter part number in "SEARCH" on website) to obtain additional part information including price, inventory and certifications: [Mini SMP Female to Mini SMP Female Right Angle Cable Using PE-P086HF Coax PE3W21722](https://www.pasternack.com/mini-smp-female-to-mini-smp-female-right-angle-cable-using-pe-p086hf-coax-pe3w21722-p.aspx)

URL: <https://www.pasternack.com/mini-smp-female-to-mini-smp-female-cable-using-pe-p086hf-pe3w21722-p.aspx>

The information contained within this document is accurate to the best of our knowledge and representative of the part described herein. It may be necessary to make modifications to the part and/or the documentation of the part in order to implement improvements. Pasternack Enterprises reserves the right to make such changes as required. Unless otherwise stated, all specifications are nominal. Pasternack Enterprises does not make any representation or warranty regarding the suitability of the part described herein for any particular purpose, and Pasternack Enterprises does not assume liability arising out of the use of any part or document.

PE3W21722 CAD Drawing

Mini SMP Female to Mini SMP Female Right Angle Cable Using PE-P086HF Coax



REVISION		DATE	CHANGED BY	APPROVED
ZONE	REV	DESCRIPTION		
	A	INITIAL RELEASE	KGLEBOVA	SRAUTUS

PE PASTERNAK
an INFINITE brand

Website: www.Pasternack.com
Phone: 1.866.727.8376 | 1.949.261.1920

INTERPRET ALL DIMENSIONS AND TOLERANCES PER ASME Y14.5
SCALE: NONE
SHEET: 1 OF 1

UNLESS OTHERWISE SPECIFIED, LEADING DIMENSIONS ARE IN INCHES. DIMENSIONS IN [] ARE MILLIMETERS.

TOLERANCES:
 .X = ±.2 (5)
 .XX = ±.02 (0.5)
 .XXX = ±.005 (0.13)
 FRACTIONS: ± 1/32
 ANGLES: ± 1°

CABLE LENGTH TOLERANCES:
 <12 (305) ≤ 60 (1524) = ±.125 (1.28) / -0
 >60 (1524) ≤ 120 (3048) = ±.1 (2.5) / -0
 >120 (3048) ≤ 300 (7620) = ±.125 (1.28) / -0
 >300 (7620) = ±.5 (12.7)

ALL DIMENSIONS ARE FOR REFERENCE ONLY. DIMENSIONS OF NON-CRITICAL FEATURES MAY VARY IN SIZE AND LOCATION. COLORS MAY VARY.

DESCRIPTION	MINI SMP FEMALE TO MINI SMP FEMALE RIGHT ANGLE CABLE USING PE-P086HF COAX
SIZE	A
CAGE CODE	53919
DRAWN BY	KGLEBOVA
ITEM NO.	PE3W21722

- NOTES:**
- CABLE ASSEMBLY LENGTH LABEL PLACEMENT: 36 INCHES OR LESS, ONE LABEL APPROXIMATELY CENTERED. LONGER THAN 36 INCHES, TWO LABELS APPROXIMATELY 6 INCHES FROM EACH CONNECTOR.
 - CABLE ASSEMBLY LENGTH DETERMINED BY ITEM PN AND DESCRIPTION.
 - CABLE ASSEMBLY SHALL BE TESTED FOR CONTINUITY.

THE INFORMATION CONTAINED IN THIS DRAWING IS THE SOLE PROPERTY OF INFINITE ELECTRONICS, INC. ANY REPRODUCTION IN PART OR WHOLE WITHOUT THE WRITTEN PERMISSION OF INFINITE ELECTRONICS, INC. IS PROHIBITED. THESE COMMODITIES, TECHNOLOGY OR SOFTWARE WERE EXPORTED FROM THE UNITED STATES IN ACCORDANCE WITH THE EXPORT ADMINISTRATION REGULATIONS. DIVERSION CONTRARY TO U.S. LAW PROHIBITED.

PE DS Rev-04 Add2