

Blue FAKRA Jack Right Angle to MMCX Plug Right Angle Cable Using RG188 Coax with HeatShrink



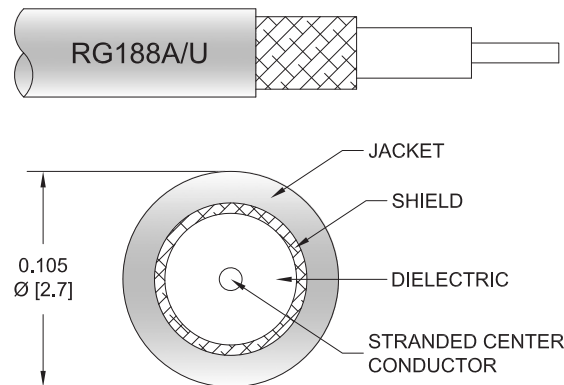
PE3W22509/HS

Configuration

- Connector 1: FAKRA Jack Right Angle
- Connector 2: MMCX Plug Right Angle
- Cable Type: RG188
- Coax Flex Type: Flexible

Features

- Max Frequency 3 GHz
- 70% Phase Velocity
- PTFE Jacket



Applications

- General Purpose
- Laboratory Use

Description

Pasternack's PE3W22509/HS blue FAKRA jack right angle to MMCX plug right angle cable using RG188 coax is part of our full line of RF components available for same-day shipping. Pasternack's flexible RF cable assemblies are ideal for applications where tight bends and flexure are required. This Pasternack FAKRA to MMCX cable assembly has a jack to plug gender configuration with 50 ohm flexible RG188 coax. The PE3W22509/HS FAKRA jack to MMCX plug cable assembly operates to 3 GHz. The right angle FAKRA and right angle MMCX interfaces on the RG188 cable allow for easier connections in tight spaces.

Custom versions of most RF cable assemblies can be built and shipped same day. Custom cable assembly lengths can be obtained by specifying the desired length on the web site at time of order or by contacting a sales representative. Other available RF cable assembly value added services include connector orientation or clocking, heat shrink booting and custom labeling. RF testing can also be performed to document the electrical performance of your cable assembly.

Electrical Specifications

Description	Minimum	Typical	Maximum	Units
Frequency Range	DC		3	GHz
VSWR			1.4:1	
Velocity of Propagation		70		%
Group Delay		1.45 [4.76]		ns/ft [ns/m]
DC Resistance Inner Conductor		84.1 [275.92]		Ohms/1000ft [Ohms/Km]

Specifications by Frequency

Blue FAKRA Jack Right Angle to MMCX Plug Right Angle Cable Using RG188 Coax with HeatShrink



PE3W22509/HS

Part Number	Length	Description	F1	Units	Weight (lbs)
		Frequency	400	MHz	
PE3W22509/HS	Custom Lengths Available	Insertion Loss (Typ.)	0.2	dB/ft	
			0.66	dB/m	
PE3W22509/HS-12	12 In	Insertion Loss (Typ.)	0.6	dB	0.028
PE3W22509/HS-24	24 In	Insertion Loss (Typ.)	0.8	dB	0.038
PE3W22509/HS-36	36 In	Insertion Loss (Typ.)	1	dB	0.048
PE3W22509/HS-48	48 In	Insertion Loss (Typ.)	1.2	dB	0.058
PE3W22509/HS-72	72 In	Insertion Loss (Typ.)	1.6	dB	0.078

The insertion loss data for the base model does not include loss due to the connectors. Each length includes insertion loss due to the connectors.

Loss due to Connector 1: 0.2 dB
 Loss due to Connector 2: 0.2 dB
 Base Weight: 0.028 pounds
 Additional Weight per Inch: 0.00083 pounds

Mechanical Specifications

Cable Assembly

Width/Diameter 0.5 in [12.7 mm]
 Weight 0.092 lbs [41.73 g]

Cable

Cable Type RG188
 Impedance 50 Ohms
 Inner Conductor Type Stranded
 Inner Conductor Material and Plating Copper Clad Steel, Silver
 Dielectric Type PTFE
 Number of Shields 1
 Shield Layer 1 Silver Plated Copper Braid
 Jacket Material PTFE, White
 Jacket Diameter 0.11 in [2.79 mm]

Blue FAKRA Jack Right Angle to MMCX Plug Right Angle
Cable Using RG188 Coax with HeatShrink



PE3W22509/HS

Connectors

Description	Connector 1	Connector 2
Type	FAKRA Jack Right Angle	MMCX Plug Right Angle
Specification		BS EN 122340
Impedance	50 Ohms	50 Ohms
Configuration	Right Angle	Right Angle
Color	BL	
Contact Material and Plating	Phosphor Bronze, Gold	Brass, Gold
Contact Plating Specification		30 µin minimum
Dielectric Type	PTFE	PTFE
Outer Conductor Material and Plating	Brass, Nickel	
Body Material and Plating	Plastic	Brass, Gold
Body Plating Specification		3 µin minimum

Environmental Specifications

Compliance Certifications (see [product page](#) for current document)

Plotted and Other Data

Notes:

Blue FAKRA Jack Right Angle to MMCX Plug Right Angle Cable Using RG188 Coax with HeatShrink



PE3W22509/HS

Typical Performance Data

How to Order

Part Number Configuration:

PE3W22509/HS - xx uu



Example: PE3W22509/HS-12 = 12 inches long cable
PE3W22509/HS-100cm = 100 cm long cable

Blue FAKRA Jack Right Angle to MMCX Plug Right Angle Cable Using RG188 Coax with HeatShrink from Pasternack Enterprises has same day shipment for domestic and International orders. Our RF, microwave and millimeter wave products maintain a 99.4% availability and are part of the broadest selection in the industry.

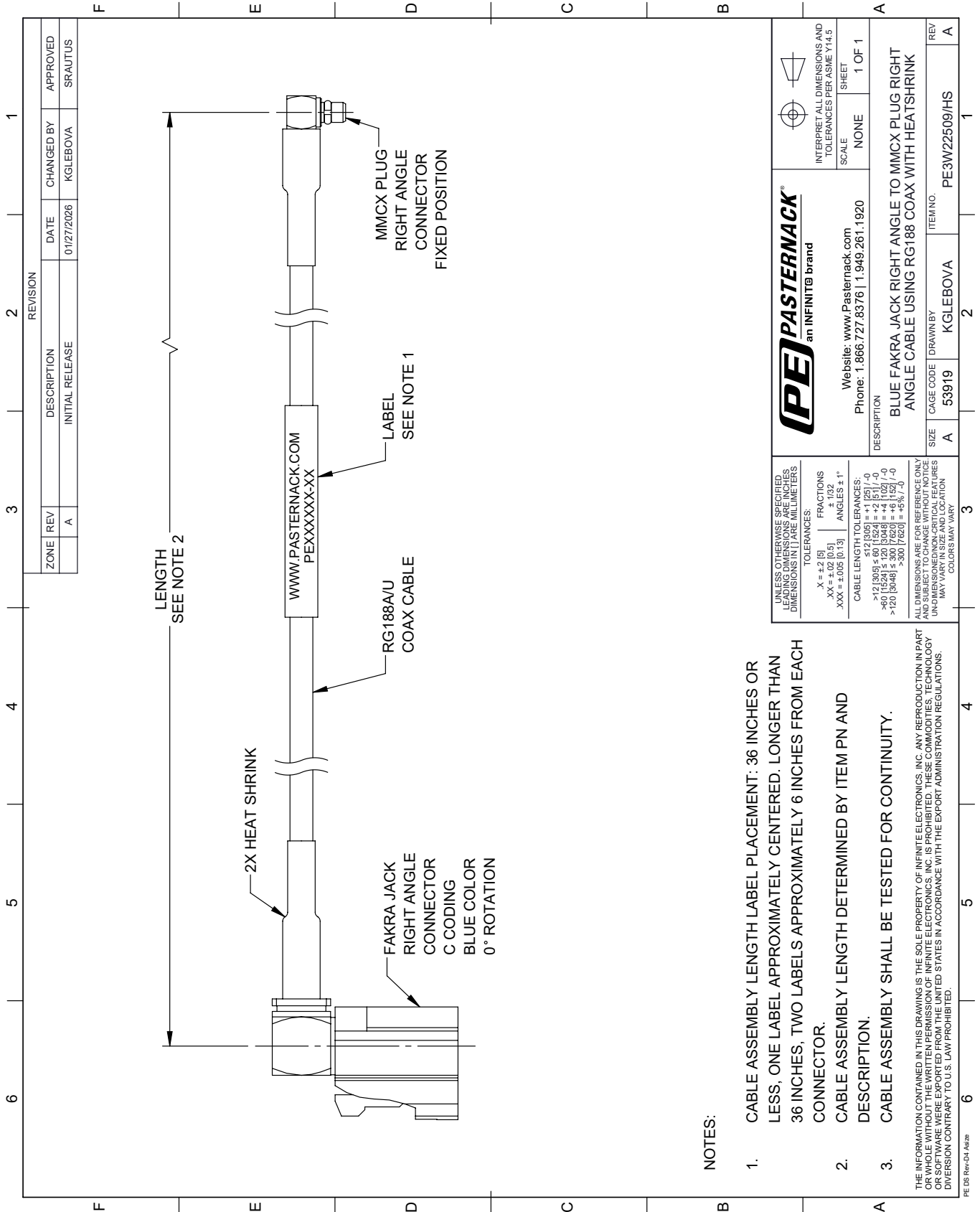
Click the following link (or enter part number in "SEARCH" on website) to obtain additional part information including price, inventory and certifications: [Blue FAKRA Jack Right Angle to MMCX Plug Right Angle Cable Using RG188 Coax with HeatShrink PE3W22509/HS](https://www.pasternack.com/fakra-jack-right-angle-to-mmcx-plug-right-angle-cable-using-rg188-coax-with-heatshrink-pe3w22509-hs)

URL: <https://www.pasternack.com/fakra-jack-right-angle-to-mmcx-plug-right-angle-cable-using-rg188-with-heatshrink-pe3w22509-hs-p.aspx>

The information contained within this document is accurate to the best of our knowledge and representative of the part described herein. It may be necessary to make modifications to the part and/or the documentation of the part in order to implement improvements. Pasternack Enterprises reserves the right to make such changes as required. Unless otherwise stated, all specifications are nominal. Pasternack Enterprises does not make any representation or warranty regarding the suitability of the part described herein for any particular purpose, and Pasternack Enterprises does not assume liability arising out of the use of any part or document.

PE3W22509/HS CAD Drawing

Blue FAKRA Jack Right Angle to MMCX Plug Right Angle Cable Using RG188 Coax with HeatShrink



REVISION		DATE	CHANGED BY	APPROVED
ZONE	REV	DESCRIPTION	INITIAL RELEASE	
	A			SRAUTUS

PE PASTERNAK
an INFINITI® brand

Website: www.Pasternack.com
Phone: 1.866.727.8376 | 1.949.261.1920

INTERPRET ALL DIMENSIONS AND TOLERANCES PER ASME Y14.5

SCALE: NONE
SHEET: 1 OF 1

DESCRIPTION: BLUE FAKRA JACK RIGHT ANGLE TO MMCX PLUG RIGHT ANGLE CABLE USING RG188 COAX WITH HEATSHRINK

SIZE: A
CAGE CODE: 53919
DRAWN BY: KGLEBOVA
ITEM NO.: PE3W22509/HS

REV: A

UNLESS OTHERWISE SPECIFIED, LEADING DIMENSIONS ARE IN INCHES. DIMENSIONS IN [] ARE MILLIMETERS.

TOLERANCES:
 .X = ±.2 [5]
 .XX = ±.02 [0.5]
 .XXX = ±.005 [0.13]
 FRACTIONS: ± 1/32
 ANGLES ± 1°

CABLE LENGTH TOLERANCES:
 <12 [305] ≤ 60 [1524] = ±.1 [25] / -0
 >60 [1524] ≤ 120 [3048] = ±.4 [102] / -0
 >120 [3048] ≤ 300 [7620] = ±.5 [12.7] / -0
 >300 [7620] = ±.5 [12.7] / -0

ALL DIMENSIONS ARE FOR REFERENCE ONLY. DIMENSIONS OF NON-CRITICAL FEATURES MAY VARY IN SIZE AND LOCATION. COLORS MAY VARY.

NOTES:

- CABLE ASSEMBLY LENGTH LABEL PLACEMENT: 36 INCHES OR LESS, ONE LABEL APPROXIMATELY CENTERED. LONGER THAN 36 INCHES, TWO LABELS APPROXIMATELY 6 INCHES FROM EACH CONNECTOR.
- CABLE ASSEMBLY LENGTH DETERMINED BY ITEM PN AND DESCRIPTION.
- CABLE ASSEMBLY SHALL BE TESTED FOR CONTINUITY.

THE INFORMATION CONTAINED IN THIS DRAWING IS THE SOLE PROPERTY OF INFINITE ELECTRONICS, INC. ANY REPRODUCTION IN PART OR WHOLE WITHOUT THE WRITTEN PERMISSION OF INFINITE ELECTRONICS, INC. IS PROHIBITED. THESE COMMODITIES, TECHNOLOGY OR SOFTWARE WERE EXPORTED FROM THE UNITED STATES IN ACCORDANCE WITH THE EXPORT ADMINISTRATION REGULATIONS. DIVISION CONTRARY TO U.S. LAW PROHIBITED.

PE DS Rev-04 Add2