

## SMA Female Connector Solder Attachment End Launch PCB, .030 inch Diameter



### PE44235

#### Configuration

- SMA Female Connector
- MIL-C-39012
- 50 Ohms
- Straight Body Geometry
- Connector Interface Types: End Launch

#### Features

- Max. Operating Frequency 18 GHz
- Gold over Nickel Plated Beryllium Copper Contact
- 50 µin minimum contact plating

#### Applications

- General Purpose Test
- PCB Applications

#### Description

Pasternack's PE44235 SMA Female Connector Solder Attachment for End Launch Cable, is part of our full line of RF components available for same-day shipping. Our SMA female connector operates up to a maximum frequency of 18 GHz.

Our SMA female connector PE44235 datasheet specifications and drawing with dimensions are shown below in this PDF. Pasternack's broad catalog of RF, microwave and millimeter wave connectors allows designers to configure and customize their signal connections however they like. Whether the need is to provide an I/O for a board design, or simply create a custom cable assembly configuration, Pasternack has the right connector for the job. Pasternack can also expertly build your custom cable assemblies for you and ship same-day.

#### Electrical Specifications

Description	Minimum	Typical	Maximum	Units
Frequency Range	DC		18	GHz
Operating Voltage (AC)			335	Vrms
Dielectric Withstanding Voltage (AC)			1,000	Vrms
High Potential Voltage at 4 and 7 MHz			670	Vrms
Corona Discharge at 70,000 feet			250	Vrms
Insulation Resistance	5,000			MOhms
Impedance		50		Ohms

#### Mechanical Specifications

##### Size

Length	0.687 in [17.45 mm]
Width	0.375 in [9.53 mm]
Height	0.262 in [6.65 mm]
Weight	0.008 lbs [3.63 g]
Mating Cycles	500 Cycles

SMA Female Connector Solder Attachment  
End Launch PCB, .030 inch Diameter



**PE44235**

**Material Specifications**

Description	Material	Plating
Contact	Beryllium Copper	Gold over Nickel 50 µin minimum
Insulation	PTFE	
Body	Brass	Gold over Nickel 10 µin minimum

**Environmental Specifications**

**Temperature**

Operating Range

-65 to +165 deg C

Shock

MIL-STD-202, Method 213, Condition I

Vibration

MIL-STD-202, Method 204, Condition D

Thermal Shock

MIL-STD-202, Method 107, Condition B

Salt Spray

MIL-STD-202, Method 101, Condition B

**Compliance Certifications** (see [product page](#) for current document)

**Plotted and Other Data**

Notes:

SMA Female Connector Solder Attachment End Launch PCB, .030 inch Diameter from Pasternack Enterprises has same day shipment for domestic and International orders. Our RF, microwave and millimeter wave products maintain a 99.4% availability and are part of the broadest selection in the industry.

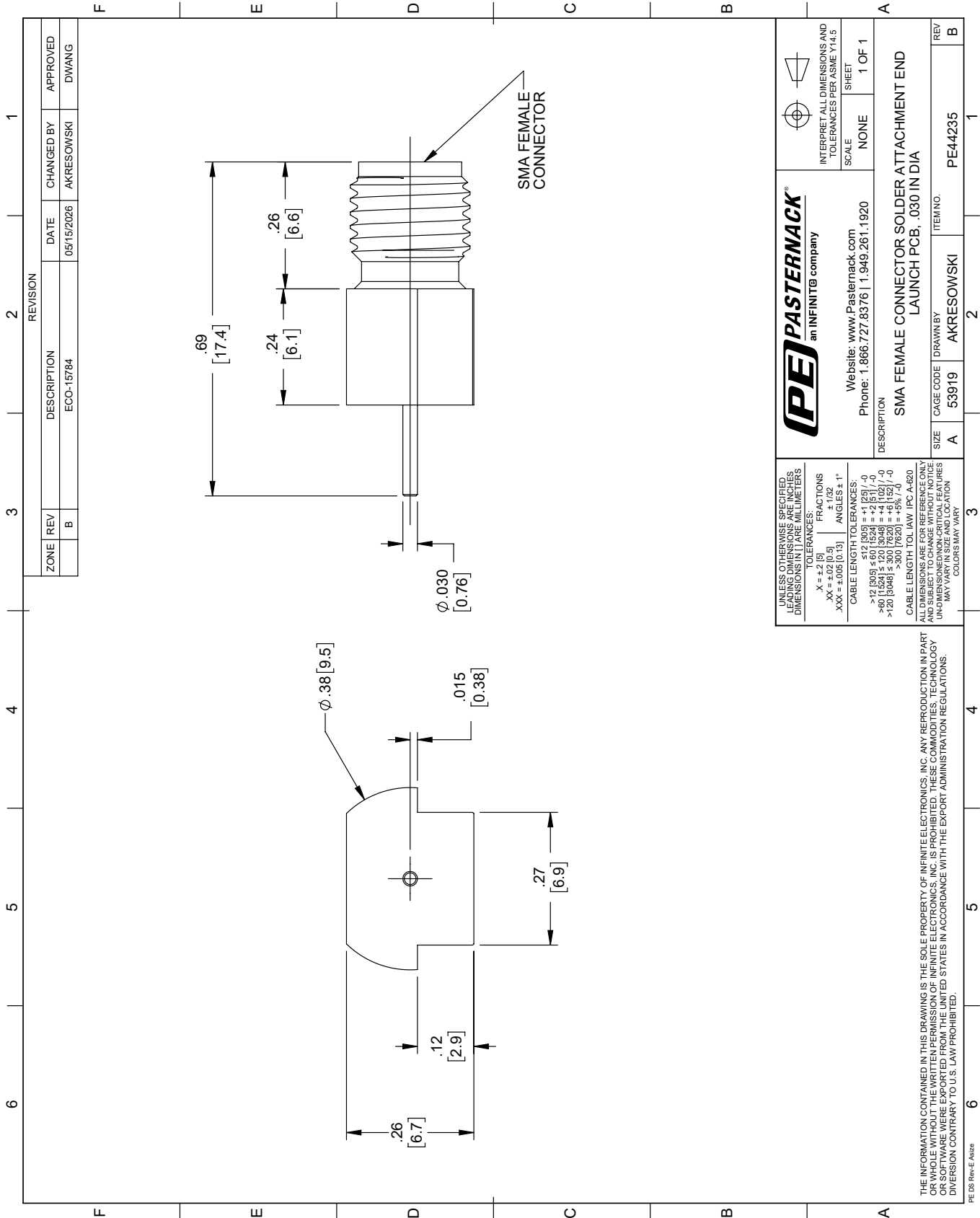
Click the following link (or enter part number in "SEARCH" on website) to obtain additional part information including price, inventory and certifications: [SMA Female Connector Solder Attachment End Launch PCB, .030 inch Diameter PE44235](#)

URL: <https://www.pasternack.com/sma-female-standard-surface-mount-pcb-connector-pe44235.html>

The information contained within this document is accurate to the best of our knowledge and representative of the part described herein. It may be necessary to make modifications to the part and/or the documentation of the part in order to implement improvements. Pasternack Enterprises reserves the right to make such changes as required. Unless otherwise stated, all specifications are nominal. Pasternack Enterprises does not make any representation or warranty regarding the suitability of the part described herein for any particular purpose, and Pasternack Enterprises does not assume liability arising out of the use of any part or document.

# PE44235 CAD Drawing

SMA Female Connector Solder Attachment End Launch PCB, .030 inch Diameter



ZONE		REV	REVISION		DATE	CHANGED BY	APPROVED
B			DESCRIPTION	ECO-15784	05/15/2026	AKRESOWSKI	DWANG

 an INFINITI company		Website: <a href="http://www.Pasternack.com">www.Pasternack.com</a> Phone: 1.866.727.8376   1.949.261.1920		INTERPRET ALL DIMENSIONS AND TOLERANCES PER ASME Y14.5 SCALE: NONE SHEET: 1 OF 1	
DESCRIPTION: SMA FEMALE CONNECTOR SOLDER ATTACHMENT END LAUNCH PCB, .030 IN DIA					
SIZE	A	CAGE CODE	53919	DRAWN BY	AKRESOWSKI
REV	B	ITEM NO.	PE44235		

UNLESS OTHERWISE SPECIFIED, LEADING DIMENSIONS ARE IN INCHES. DIMENSIONS IN [ ] ARE MILLIMETERS.

TOLERANCES:

X = ±.2 [5]	FRACTIONS ± 1/32	ANGLES ± 1°
.XX = ±.02 [0.5]		
.XXX = ±.005 [0.13]		

CABLE LENGTH TOLERANCES:

>12 [305] ≤ 512 [1303]	±.125 [-0]
>120 [3048] ≤ 300 [7620]	±.25 [-0]
>60 [1524] ≤ 120 [3048]	±.125 [-0]
>120 [3048] ≤ 300 [7620]	±.25 [-0]
>300 [7620]	±.50 [-0]

CABLE LENGTH TOL. IAW IPC A-620.

ALL DIMENSIONS ARE FOR REFERENCE ONLY. DIMENSIONS OF THIS DRAWING ARE NOT TO BE USED FOR MANUFACTURE OF UNLESS OTHERWISE SPECIFIED. DIMENSIONS OF NON-CRITICAL FEATURES MAY VARY IN SIZE AND LOCATION. COLORS MAY VARY.

THE INFORMATION CONTAINED IN THIS DRAWING IS THE SOLE PROPERTY OF INFINITE ELECTRONICS, INC. ANY REPRODUCTION IN PART OR WHOLE WITHOUT THE WRITTEN PERMISSION OF INFINITE ELECTRONICS, INC. IS PROHIBITED. THESE COMMODITIES, TECHNOLOGY OR SOFTWARE WERE EXPORTED FROM THE UNITED STATES IN ACCORDANCE WITH THE EXPORT ADMINISTRATION REGULATIONS. DIVISION CONTRARY TO U.S. LAW PROHIBITED.

PE DS Rev-E A4/26