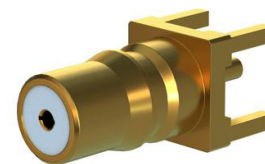


QMA Female PCB Mount



PE517818

Configuration

- QMA Female Connector
- 50 Ohms
- PCB

Features

- Max. Operating Frequency 6 GHz
- Excellent VSWR of 1.2:1
- Gold over Nickel Alloy over Copper Plated Beryllium Copper Contact

Applications

- General Purpose Test
- Custom Cable Assemblies

Description

Pasternack's PE517818 QMA Female Connector PCB Mount is part of our full line of RF components available for same-day shipping. Our QMA female connector operates up to a maximum frequency of 6 GHz and offers excellent VSWR of 1.2:1.

Our QMA female pcb connector PE517818 datasheet specifications and drawing with dimensions are shown below in this PDF. Pasternack's broad catalog of RF, microwave and millimeter wave connectors allows designers to configure and customize their signal connections however they like. Whether the need is to provide an I/O for a board design, or simply create a custom cable assembly configuration, Pasternack has the right connector for the job. Pasternack can also expertly build your custom cable assemblies for you and ship same-day.

Electrical Specifications

| Description | Minimum | Typical | Maximum | Units |
|-------------------------------|---------|---------|---------|-------|
| Frequency Range | DC | | 6 | GHz |
| VSWR | | | 1.2:1 | |
| Insertion Loss | | | 0.122 | dB |
| Inner Conductor DC Resistance | | | 3 | mOhms |
| Outer Conductor DC Resistance | | | 2.5 | mOhms |
| Insulation Resistance | 5,000 | | | MOhms |
| Impedance | | 50 | | Ohms |

Electrical Specification Notes:

Dielectric Withstanding Voltage (at sea level) : 1000 V rms, 50Hz

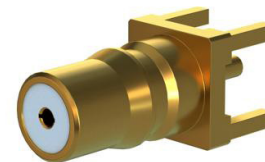
Working Voltage (at sea level) : 480 V rms, 50Hz

Mechanical Specifications

Size

| | |
|-----------------------|----------------------|
| Length | 0.582 in [14.78 mm] |
| Width | 0.252 in [6.4 mm] |
| Height | 0.252 in [6.4 mm] |
| Weight | 0.0595 lbs [26.99 g] |
| Mating Cycles | 100 Cycles |
| Cable Retention Force | 1.5 lbs [680.39 g] |
| Engagement Force | 5.6lbs [2.54kg] |
| Disengagement Force | 4.5lbs [2.04kg] |

QMA Female PCB Mount



PE517818

Material Specifications

| Description | Material | Plating |
|-------------|------------------|------------------------------------|
| Contact | Beryllium Copper | Gold over Nickel Alloy over Copper |
| Insulation | PTFE | |
| Body | Brass | Gold over Nickel Alloy over Copper |

Environmental Specifications

Temperature

Operating Range

-40 to +85 deg C

Thermal Shock

IEC 60169-1 16.4 (-40°C to +85°C)

Salt Spray

IEC 60169-1 16.7 (48hrs)

Compliance Certifications (see [product page](#) for current document)

Plotted and Other Data

Notes:

QMA Female PCB Mount from Pasternack Enterprises has same day shipment for domestic and International orders. Our RF, microwave and millimeter wave products maintain a 99.4% availability and are part of the broadest selection in the industry.

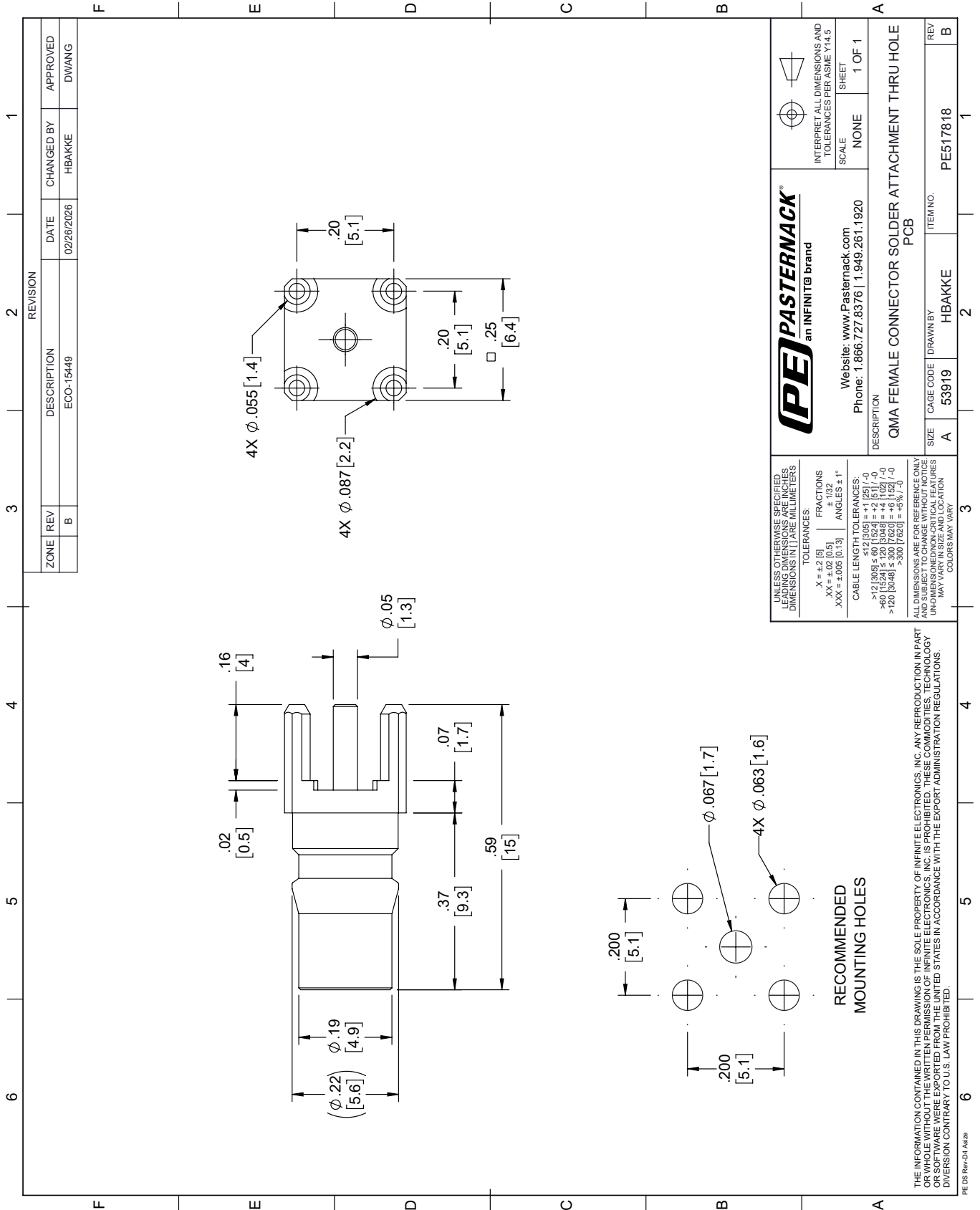
Click the following link (or enter part number in "SEARCH" on website) to obtain additional part information including price, inventory and certifications: [QMA Female PCB Mount PE517818](#)

URL: <https://www.pasternack.com/qma-female-connector-pe517818.html>

The information contained within this document is accurate to the best of our knowledge and representative of the part described herein. It may be necessary to make modifications to the part and/or the documentation of the part in order to implement improvements. Pasternack Enterprises reserves the right to make such changes as required. Unless otherwise stated, all specifications are nominal. Pasternack Enterprises does not make any representation or warranty regarding the suitability of the part described herein for any particular purpose, and Pasternack Enterprises does not assume liability arising out of the use of any part or document.

PE517818 CAD Drawing

QMA Female PCB Mount



| REVISION | | DATE | CHANGED BY | APPROVED |
|----------|-----|-------------|------------|----------|
| ZONE | REV | DESCRIPTION | ECO-15449 | |
| | B | | HBAKKE | DWANG |

PE PASTERNAK
an INFINITI® brand

Website: www.Pasternack.com
Phone: 1.866.727.8376 | 1.949.261.1920

INTERPRET ALL DIMENSIONS AND TOLERANCES PER ASME Y14.5

SCALE: NONE
SHEET: 1 OF 1

DESCRIPTION: QMA FEMALE CONNECTOR SOLDER ATTACHMENT THRU HOLE PCB

| | | | |
|------|-----------|----------|----------|
| SIZE | CAGE CODE | DRAWN BY | ITEM NO. |
| A | 53919 | HBAKKE | PE517818 |

REV B

UNLESS OTHERWISE SPECIFIED, DIMENSIONS ARE IN INCHES. LEADING DIMENSIONS ARE IN MILLIMETERS. DIMENSIONS IN [] ARE MILLIMETERS.

TOLERANCES:

| | |
|---------------------|------------------|
| .X = ±.2 [5] | FRACTIONS ± 1/32 |
| .XX = ±.02 [0.5] | ANGLES ± 1° |
| .XXX = ±.005 [0.13] | |

CABLE LENGTH TOLERANCES:

| | |
|--------------------------|--------------|
| < 12 [305] | ±.60 [15.24] |
| > 12 [305] ≤ 60 [1524] | ±.12 [3.048] |
| > 60 [1524] ≤ 120 [3048] | ±.24 [6.096] |
| > 120 [3048] | ±.30 [7.620] |

ALL DIMENSIONS ARE FOR REFERENCE ONLY. DIMENSIONS OF NON-CRITICAL FEATURES MAY VARY IN SIZE AND LOCATION. COLORS MAY VARY.

THE INFORMATION CONTAINED IN THIS DRAWING IS THE SOLE PROPERTY OF INFINITE ELECTRONICS, INC. ANY REPRODUCTION IN PART OR WHOLE WITHOUT THE WRITTEN PERMISSION OF INFINITE ELECTRONICS, INC. IS PROHIBITED. THESE COMMODITIES, TECHNOLOGY OR SOFTWARE WERE EXPORTED FROM THE UNITED STATES IN ACCORDANCE WITH THE EXPORT ADMINISTRATION REGULATIONS. DIVISION CONTRARY TO U.S. LAW PROHIBITED.

PE DS Rev-04 Add2