

SMA Female Bulkhead Connector Crimp Attachment For LMR-240, TCOM-240, PE-C240, .268 inch D Hole, IP67 Mated



PE517823

Configuration

- SMA Female Connector
- MIL-STD-348B
- 50 Ohms
- Straight Body Geometry
- Connector Interface Types: LMR-240, TCOM-240, PE-C240
- Bulkhead

Features

- Max. Operating Frequency 6 GHz
- Gold over Nickel over Copper Plated Beryllium Copper Contact
- IP67 Mated

Applications

- General Purpose Test
- Rack and Panel Mount Applications
- Custom Cable Assemblies

Description

Pasternack's PE517823 SMA Female Bulkhead Mount Connector Crimp Attachment for LMR-240, TCOM-240 and PE-C240 Cable IP67 Mated is part of our full line of RF components available for same-day shipping. Our SMA female connector operates up to a maximum frequency of 6 GHz. This SMA bulkhead connector allows designers to create external connections on their product enclosures, and can be used in a variety of other rack mount and panel mount applications. The connector has an IP67 rating to protect against dust and temporary moisture protection under immersion conditions.

Our SMA female bulkhead connector PE517823 datasheet specifications and drawing with dimensions are shown below in this PDF. Pasternack's broad catalog of RF, microwave and millimeter wave connectors allows designers to configure and customize their signal connections however they like. Whether the need is to provide an I/O for a board design, or simply create a custom cable assembly configuration, Pasternack has the right connector for the job. Pasternack can also expertly build your custom cable assemblies for you and ship same-day.

Electrical Specifications

Description	Minimum	Typical	Maximum	Units
Frequency Range	DC		6	GHz
VSWR		1.2:1		
Dielectric Withstanding Voltage (AC)			1,000	Vrms
High Potential Voltage			335	Vrms
Inner Conductor DC Resistance			3	mOhms
Outer Conductor DC Resistance			2	mOhms
Insulation Resistance	5,000			MOhms
Impedance		50		Ohms

Electrical Specification Notes:
Insertion loss is equal to $0.04 \times \text{SQRT } F(\text{GHz}) \text{ dB}$

Mechanical Specifications

Size	
Length	0.843 in [21.41 mm]
Width	0.433 in [11 mm]
Height	0.433 in [11 mm]

SMA Female Bulkhead Connector Crimp Attachment For LMR-240, TCOM-240, PE-C240, .268 inch D Hole, IP67 Mated



PE517823

Weight	0.011 lbs [4.99 g]
Mating Cycles	100 Cycles
Mating Torque	4 to 5.3 in-lbs [[0.45 to 0.60 Nm]]
Cable Retention Force	6.1 lbs [2.77 kg]

Material Specifications

Description	Material	Plating
Contact	Beryllium Copper	Gold over Nickel over Copper
Insulation	PTFE	
Outer Conductor	Brass	Gold
Body	Brass	Gold over Nickel over Copper
Gasket	Silicone	
Crimp Sleeve	Copper	Gold over Nickel over Copper

Environmental Specifications

Temperature	
Operating Range	-65 to +165 deg C
Ingress Protection (IP) Rating	IP67 Mated
Humidity	MIL-STD-202, Method 106
Thermal Shock	MIL-STD-202, Method 107, Condition B

Compliance Certifications (see [product page](#) for current document)

Plotted and Other Data

Notes:

SMA Female Bulkhead Connector Crimp Attachment For LMR-240, TCOM-240, PE-C240, .268 inch D Hole, IP67 Mated from Pasternack Enterprises has same day shipment for domestic and International orders. Our RF, microwave and millimeter wave products maintain a 99.4% availability and are part of the broadest selection in the industry.

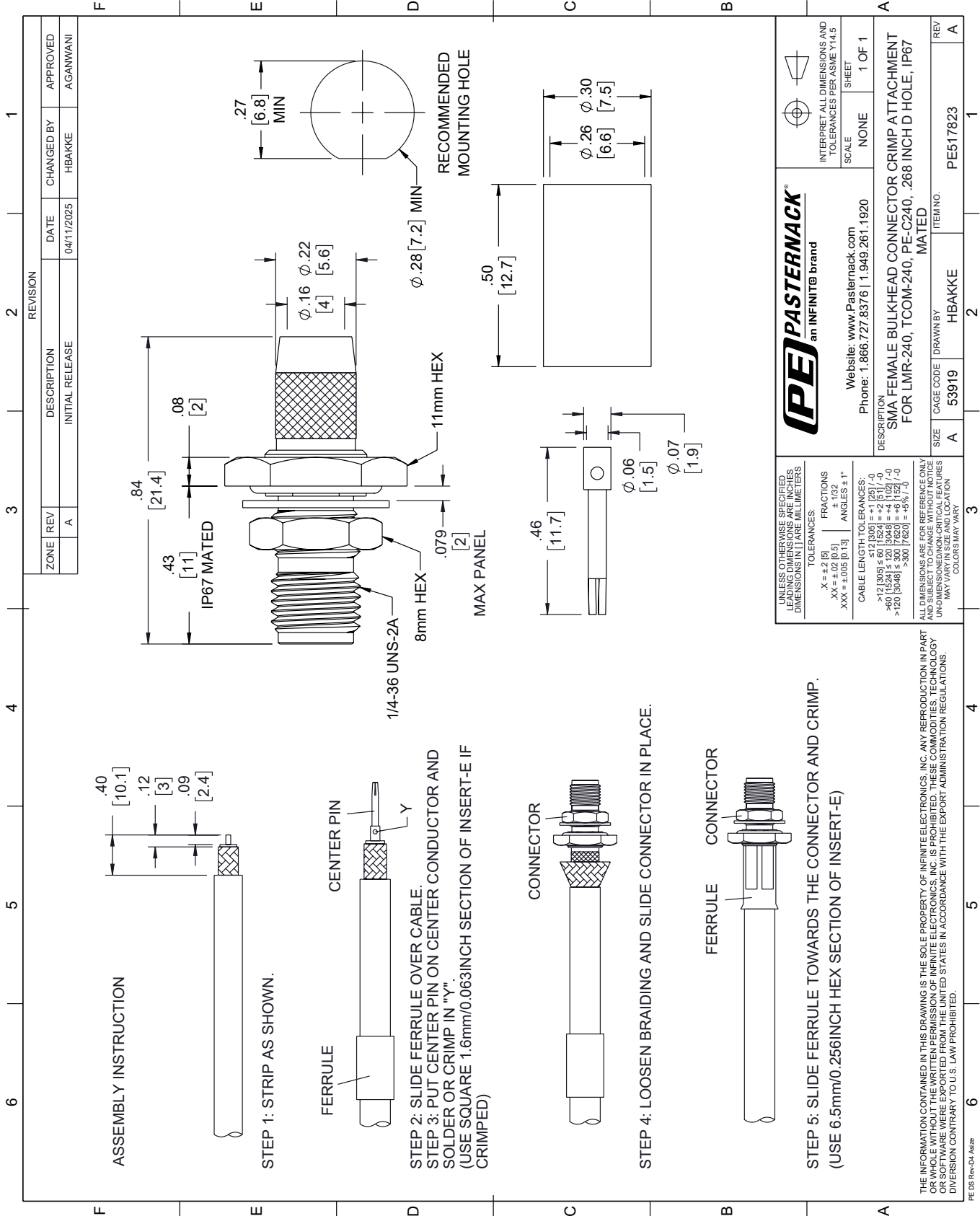
Click the following link (or enter part number in "SEARCH" on website) to obtain additional part information including price, inventory and certifications: [SMA Female Bulkhead Connector Crimp Attachment For LMR-240, TCOM-240, PE-C240, .268 inch D Hole, IP67 Mated PE517823](#)

URL: <https://www.pasternack.com/sma-female-lmr-240-tcom-240-pe-c240-connector-pe517823.html>

The information contained within this document is accurate to the best of our knowledge and representative of the part described herein. It may be necessary to make modifications to the part and/or the documentation of the part in order to implement improvements. Pasternack Enterprises reserves the right to make such changes as required. Unless otherwise stated, all specifications are nominal. Pasternack Enterprises does not make any representation or warranty regarding the suitability of the part described herein for any particular purpose, and Pasternack Enterprises does not assume liability arising out of the use of any part or document.

PE517823 CAD Drawing

SMA Female Bulkhead Connector Crimp Attachment For LMR-240, TCOM-240, PE-C240, .268 inch D Hole, IP67 Mated



UNLESS OTHERWISE SPECIFIED, LEADING DIMENSIONS ARE IN INCHES AND DIMENSIONS IN [] ARE MILLIMETERS		INTERPRET ALL DIMENSIONS AND TOLERANCES PER ASME Y14.5	
TOLERANCES: .X = ±.2 [5] .XX = ±.02 [0.5] .XXX = ±.005 [0.13]		SCALE NONE	
FRACTIONS: ± 1/32 ANGLES: ± 1°		SHEET 1 OF 1	
CABLE LENGTH TOLERANCES: ≤ 12 [305] ≤ 60 [1524] = +1 [25] / -0 > 60 [1524] ≤ 120 [3048] = +4 [102] / -0 > 120 [3048] ≤ 300 [7620] = +5% / -0		WEBSITE: www.Pasternack.com PHONE: 1.866.727.8376 1.949.261.1920	
ALL DIMENSIONS ARE FOR REFERENCE ONLY. UNLESS OTHERWISE SPECIFIED, DIMENSIONS ARE IN INCHES AND DIMENSIONS IN [] ARE MILLIMETERS. COLORS MAY VARY.			
DESCRIPTION SMA FEMALE BULKHEAD CONNECTOR CRIMP ATTACHMENT FOR LMR-240, TCOM-240, PE-C240, .268 INCH D HOLE, IP67 MATED		ITEM NO. PE517823	
SIZE A		REV A	
CAGE CODE 53919		DRAWN BY HBAKKE	

THE INFORMATION CONTAINED IN THIS DRAWING IS THE SOLE PROPERTY OF INFINITE ELECTRONICS, INC. ANY REPRODUCTION IN PART OR WHOLE WITHOUT THE WRITTEN PERMISSION OF INFINITE ELECTRONICS, INC. IS PROHIBITED. THESE COMMODITIES, TECHNOLOGY OR SOFTWARE ARE EXPORTED FROM THE UNITED STATES IN ACCORDANCE WITH THE EXPORT ADMINISTRATION REGULATIONS. DIVERSION CONTRARY TO U.S. LAW PROHIBITED.

PE DS Rev-04 Add2