

## 10 Watt RF Load (Termination) Up to 6 GHz With NEX10 Male Input Aluminum Body



### PE6TR1161

#### Features

- DC to 6 GHz Frequency Range
- 50 Ohm Impedance
- NEX10 Male Coaxial Interface
- Max VSWR 1.20:1
- Max Power 10 Watts (CW)

#### Applications

- 5G Cellular Bands
- SatCom
- Radar Systems
- Test and Measurement
- Commercial and Military Communication
- DAS Systems

#### Description

Pasternack's PE6TR1161 is an RF termination (also called RF load or dummy load) that operates from DC to 6 GHz and handles up to 10 Watt (CW). Our NEX10 termination / load has a male gender. PE6TR1161 NEX10 load termination offers 1.25:1 max VSWR.

RF load / terminations are indispensable components in many RF, microwave and millimeter wave systems where signal reflection from unused ports can potentially damage the device or reduce the signal integrity. By using a terminator on an unused port with a matched load (dummy load), the incident energy will be absorbed with minimal reflection. These termination components are commonly used to terminate devices such as couplers, circulators, and switches. They are also widely used in measurement systems to ensure accurate results. Pasternack offers a huge selection of RF, microwave and millimeter wave terminations up to 65 GHz with excellent performance over the entire operating range and power handling capabilities up to 800 Watt (CW).

#### Electrical Specifications

| Description               | Minimum | Typical | Maximum | Units |
|---------------------------|---------|---------|---------|-------|
| Frequency Range           | DC      |         | 6       | GHz   |
| Impedance                 |         | 50      |         | Ohms  |
| VSWR, Input               |         |         | 1.2:1   |       |
| Input Power (CW)          |         |         | 10      | Watts |
| Input Power (Peak)        |         |         | 100     | Watts |
| 20μs pulse, 8% duty cycle |         |         |         |       |

#### Mechanical Specifications

##### Size

|              |                    |
|--------------|--------------------|
| Length       | 1.76 in [44.7 mm]  |
| Width        | 0.63 in [16 mm]    |
| Height       | 0.63 in [16 mm]    |
| Weight       | 0.05 lbs [22.68 g] |
| Package Type | Connectorized      |

##### Configuration

|           |            |
|-----------|------------|
| Connector | NEX10 Male |
|-----------|------------|

#### Material Specifications

| Description         | Material         | Plating |
|---------------------|------------------|---------|
| Connector 1 Contact | Beryllium Copper | Silver  |

10 Watt RF Load (Termination) Up to 6 GHz  
With NEX10 Male Input Aluminum Body



**PE6TR1161**

**Material Specifications**

| Description      | Material | Plating   |
|------------------|----------|-----------|
| Insulation       | PTFE     |           |
| Connector 1 Body | Brass    | Tri-Metal |
| Housing          | Aluminum |           |

**Environmental Specifications**

**Temperature**

|                 |                   |
|-----------------|-------------------|
| Operating Range | -40 to +75 deg C  |
| Storage Range   | -50 to +85 deg C  |
| Humidity        | <95%              |
| Shock           | IEC 60068-2-27    |
| Vibration       | IEC 60068-2-6-Fc  |
| Altitude        | <5000m            |
| Thermal Shock   | IEC 60068-2-14-Na |

**Compliance Certifications** (see [product page](#) for current document)

**Plotted and Other Data**

Notes:

10 Watt RF Load (Termination) Up to 6 GHz With NEX10 Male Input Aluminum Body from Pasternack Enterprises has same day shipment for domestic and International orders. Our RF, microwave and millimeter wave products maintain a 99.4% availability and are part of the broadest selection in the industry.

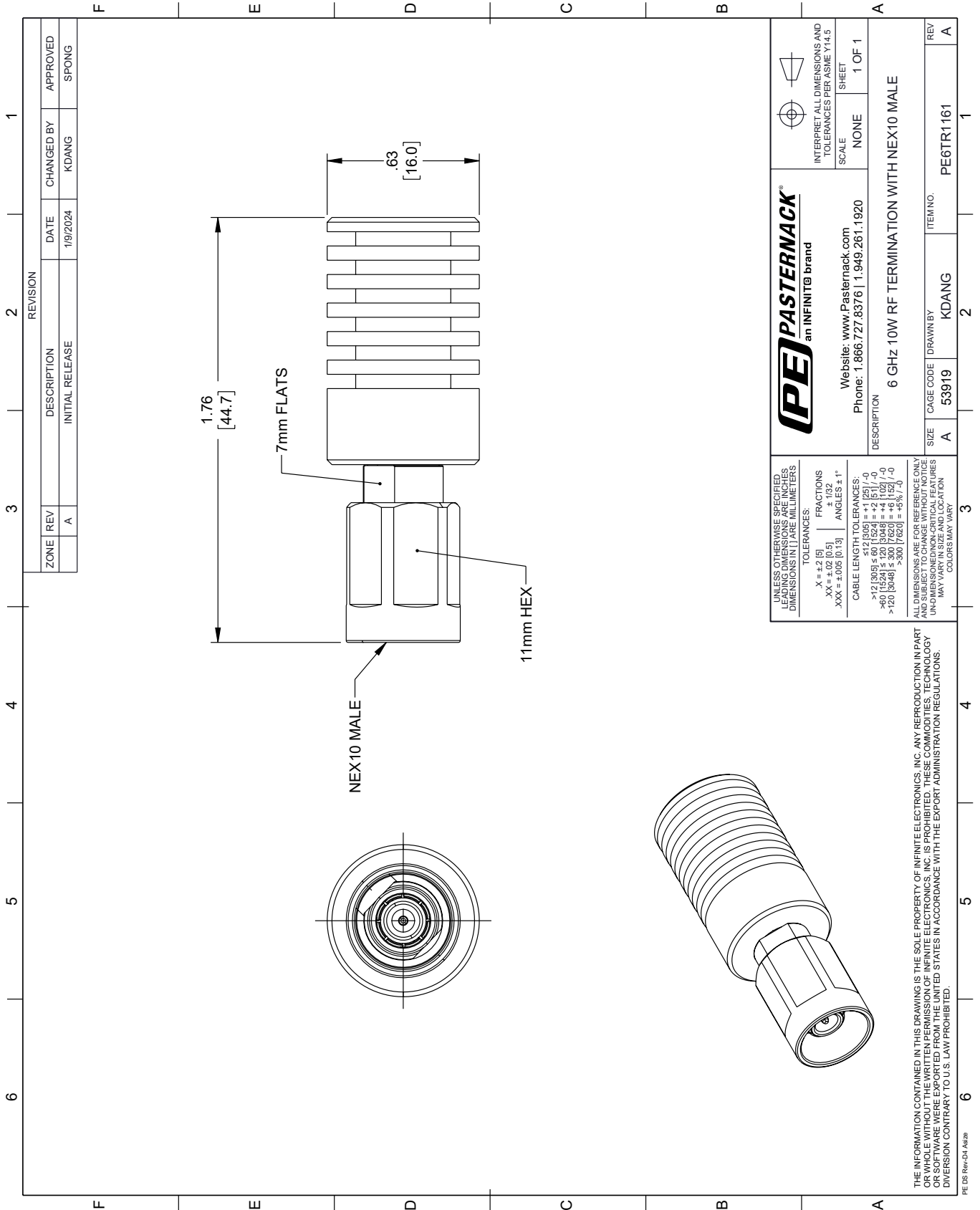
Click the following link (or enter part number in "SEARCH" on website) to obtain additional part information including price, inventory and certifications: [10 Watt RF Load \(Termination\) Up to 6 GHz With NEX10 Male Input Aluminum Body PE6TR1161](#)

URL: <https://www.pasternack.com/10-watts-nex10-male-rf-load-6-ghz-pe6tr1161-p.aspx>

The information contained within this document is accurate to the best of our knowledge and representative of the part described herein. It may be necessary to make modifications to the part and/or the documentation of the part in order to implement improvements. Pasternack Enterprises reserves the right to make such changes as required. Unless otherwise stated, all specifications are nominal. Pasternack Enterprises does not make any representation or warranty regarding the suitability of the part described herein for any particular purpose, and Pasternack Enterprises does not assume liability arising out of the use of any part or document.

# PE6TR1161 CAD Drawing

10 Watt RF Load (Termination) Up to 6 GHz With NEX10 Male Input Aluminum Body



| REVISION |     | DESCRIPTION     | DATE     | CHANGED BY | APPROVED |
|----------|-----|-----------------|----------|------------|----------|
| ZONE     | REV | INITIAL RELEASE | 1/9/2024 | KDANG      | SPONG    |
| A        |     |                 |          |            |          |

**PE PASTERNAK®**  
an INFINITE® brand

Website: [www.Pasternack.com](http://www.Pasternack.com)  
Phone: 1.866.727.8376 | 1.949.261.1920

INTERPRET ALL DIMENSIONS AND TOLERANCES PER ASME Y14.5  
SCALE: NONE  
SHEET: 1 OF 1

DESCRIPTION: 6 GHz 10W RF TERMINATION WITH NEX10 MALE

|      |           |          |           |
|------|-----------|----------|-----------|
| SIZE | CAGE CODE | DRAWN BY | ITEM NO.  |
| A    | 53919     | KDANG    | PE6TR1161 |

REV: A

UNLESS OTHERWISE SPECIFIED, LEADING DIMENSIONS ARE IN INCHES. DIMENSIONS IN [ ] ARE MILLIMETERS.

TOLERANCES:  
 .X = ±.2 [5]  
 .XX = ±.02 [0.5]  
 .XXX = ±.005 [0.13]

FRACTIONS  
 ± 1/32  
 ANGLES ± 1°

CABLE LENGTH TOLERANCES:  
 <12 [305] ≤ 60 [1524] = ±.1 [2.5] / -0  
 >60 [1524] ≤ 120 [3048] = ±.4 [102] / -0  
 >120 [3048] ≤ 300 [7620] = ±.6 [15.2] / -0  
 >300 [7620] = ±.6 [15.2] / -0

ALL DIMENSIONS ARE FOR REFERENCE ONLY. UNDIMENSIONED/NON-CRITICAL FEATURES MAY VARY IN SIZE AND LOCATION. COLORS MAY VARY.

THE INFORMATION CONTAINED IN THIS DRAWING IS THE SOLE PROPERTY OF INFINITE ELECTRONICS, INC. ANY REPRODUCTION IN PART OR WHOLE WITHOUT THE WRITTEN PERMISSION OF INFINITE ELECTRONICS, INC. IS PROHIBITED. THESE COMMODITIES, TECHNOLOGY OR SERVICES ARE NOT EXPORTED FROM THE UNITED STATES IN ACCORDANCE WITH THE EXPORT ADMINISTRATION REGULATIONS. DIVERSION CONTRARY TO U.S. LAW PROHIBITED.

PE DS Rev-04 Add2