



SP6T Electromechanical Relay Latching Switch DC to 22 GHz,  
 SMA, 20 Watts, 12V Control, Indicators, TTL, Self Cut Off, Diodes

## Electromechanical Relay Switches Technical Data Sheet

PE71S6315

### Features

- SP6T Absorptive Switch
- DC to 22 GHz Operating Frequency Range
- 1 M Cycles min

### Applications

- Test & Measurement
- Communications System
- Instrumentation

### Description

The PE71S6315 is a Single Pole Six Throw Absorptive Switch that operates from DC to 22 GHz. The switch has a latching actuator and an indicator and 1M life cycles. The switch has an operating voltage of 12 Volts and has TTL control.

### Electrical Specifications

Switch Type	SP6T, Absorptive
Actuator Type	Latching
Switching Sequence	Break Before Make
Actuator Options	Indicators, TTL Logic, Self Cut Off, Diodes
TTL Control	on: "High" to off: "Low" to

Description	Minimum	Typical	Maximum	Units
Frequency Range	DC		22	GHz
Impedance		50		Ohms
Operating Voltage		12		Volts
Actuating Current @ 12 Volts		300		mA
VSWR			1.6:1	
Insertion Loss			0.6	dB
Isolation	60			dB
Input Power (CW) (22 GHz)			20	Watts

### Performance by Frequency

Description	F1	F2	F3	F4	F5	Units
Frequency Range	DC to 4	4 to 8	8 to 12	12 to 18	18 to 22	GHz
VSWR, Max	1.2:1	1.3:1	1.4:1	1.5:1	1.6:1	
Insertion Loss, Max	0.3	0.35	0.4	0.5	0.6	dB
Isolation, Min	75	70	65	60	60	dB

Click the following link (or enter part number in "SEARCH" on website) to obtain additional part information including price, inventory and certifications: [SP6T Electromechanical Relay Latching Switch DC to 22 GHz, SMA, 20 Watts, 12V Control, Indicators, TTL, Self Cut Off, Diodes PE71S6315](#)



SP6T Electromechanical Relay Latching Switch DC to 22 GHz,  
SMA, 20 Watts, 12V Control, Indicators, TTL, Self Cut Off, Diodes

## Electromechanical Relay Switches Technical Data

PE71S6315

### Mechanical Specifications

#### Size

Length	2.13 in [54.1 mm]
Width/Diameter	2.13 in [54.1 mm]
Height	2.58 in [65.53 mm]
Weight	0.625 lbs [283.5 g]
Body Material and Plating	Aluminum, Nickel

Operating Life	1,000,000 Cycles
Switching Time	20 ms Max

#### Connectors

RF Connector Type	SMA Female
RF Connector Contact Material and Plating	Beryllium Copper, Gold
RF Connector Body Material and Plating	Passivated Stainless Steel

### Environmental Specifications

#### Temperature

Operating Range	-25 to +65 deg C
ESD Sensitivity	ESD Sensitive Material, Transport material in Approved ESD bags. Handle only in ESD Workstation.



### Compliance Certifications (visit [www.Pasternack.com](http://www.Pasternack.com) for current document)

RoHS Compliant

### Plotted and Other Data

Notes:

Click the following link (or enter part number in "SEARCH" on website) to obtain additional part information including price, inventory and certifications: [SP6T Electromechanical Relay Latching Switch DC to 22 GHz, SMA, 20 Watts, 12V Control, Indicators, TTL, Self Cut Off, Diodes PE71S6315](#)

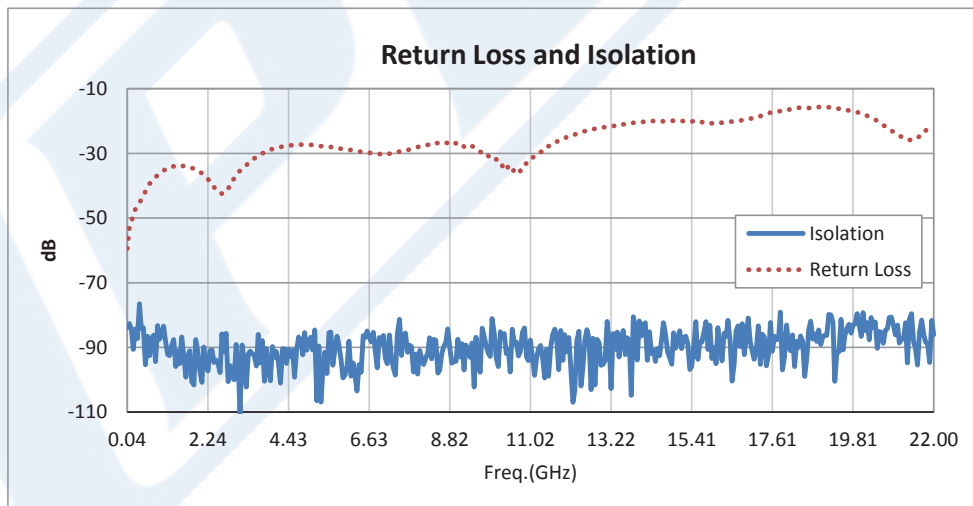
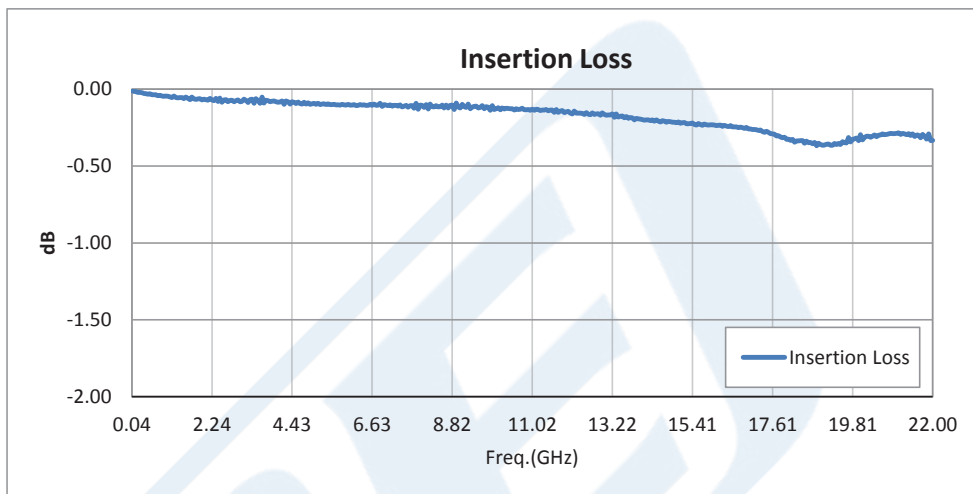


SP6T Electromechanical Relay Latching Switch DC to 22 GHz,  
SMA, 20 Watts, 12V Control, Indicators, TTL, Self Cut Off, Diodes

Electromechanical Relay Switches Technical Data

PE71S6315

Typical Performance Data



Click the following link (or enter part number in "SEARCH" on website) to obtain additional part information including price, inventory and certifications: [SP6T Electromechanical Relay Latching Switch DC to 22 GHz, SMA, 20 Watts, 12V Control, Indicators, TTL, Self Cut Off, Diodes PE71S6315](#)



SP6T Electromechanical Relay Latching Switch DC to 22 GHz,  
SMA, 20 Watts, 12V Control, Indicators, TTL, Self Cut Off, Diodes

## Electromechanical Relay Switches Technical Data

PE71S6315

SP6T Electromechanical Relay Latching Switch DC to 22 GHz, SMA, 20 Watts, 12V Control, Indicators, TTL, Self Cut Off, Diodes from Pasternack Enterprises has same day shipment for domestic and International orders. Our RF, microwave and millimeter wave products maintain a 99% availability and are part of the broadest selection in the industry.

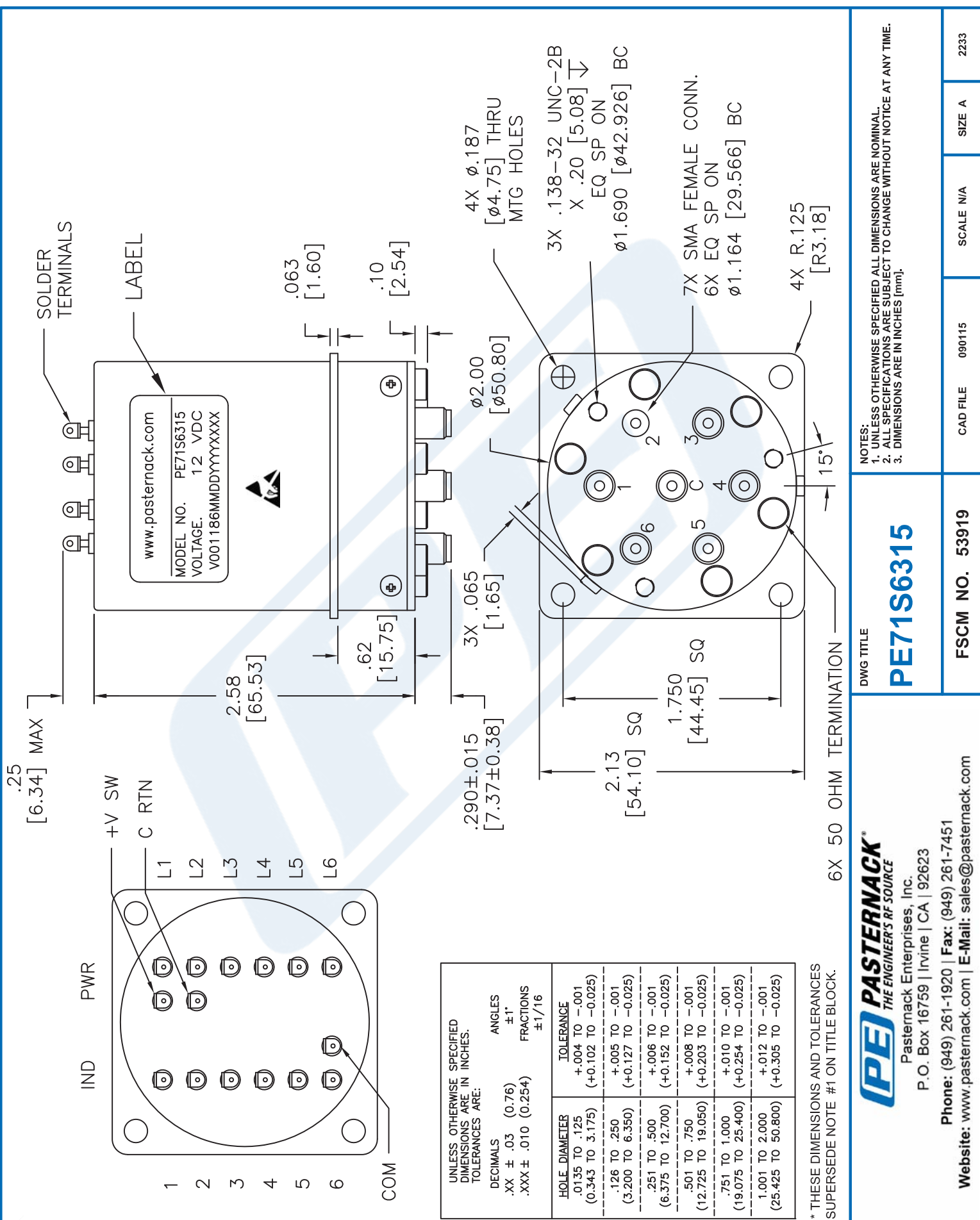
Click the following link (or enter part number in "SEARCH" on website) to obtain additional part information including price, inventory and certifications: [SP6T Electromechanical Relay Latching Switch DC to 22 GHz, SMA, 20 Watts, 12V Control, Indicators, TTL, Self Cut Off, Diodes PE71S6315](http://www.pasternack.com/sma-sp6t-electromechanical-relay-switch-22-ghz-pe71s6315-p.aspx)

URL: <http://www.pasternack.com/sma-sp6t-electromechanical-relay-switch-22-ghz-pe71s6315-p.aspx>

The information contained in this document is accurate to the best of our knowledge and representative of the part described herein. It may be necessary to make modifications to the part and/or the documentation of the part, in order to implement improvements. Pasternack reserves the right to make such changes as required. Unless otherwise stated, all specifications are nominal. Pasternack does not make any representation or warranty regarding the suitability of the part described herein for any particular purpose, and Pasternack does not assume any liability arising out of the use of any part or documentation.

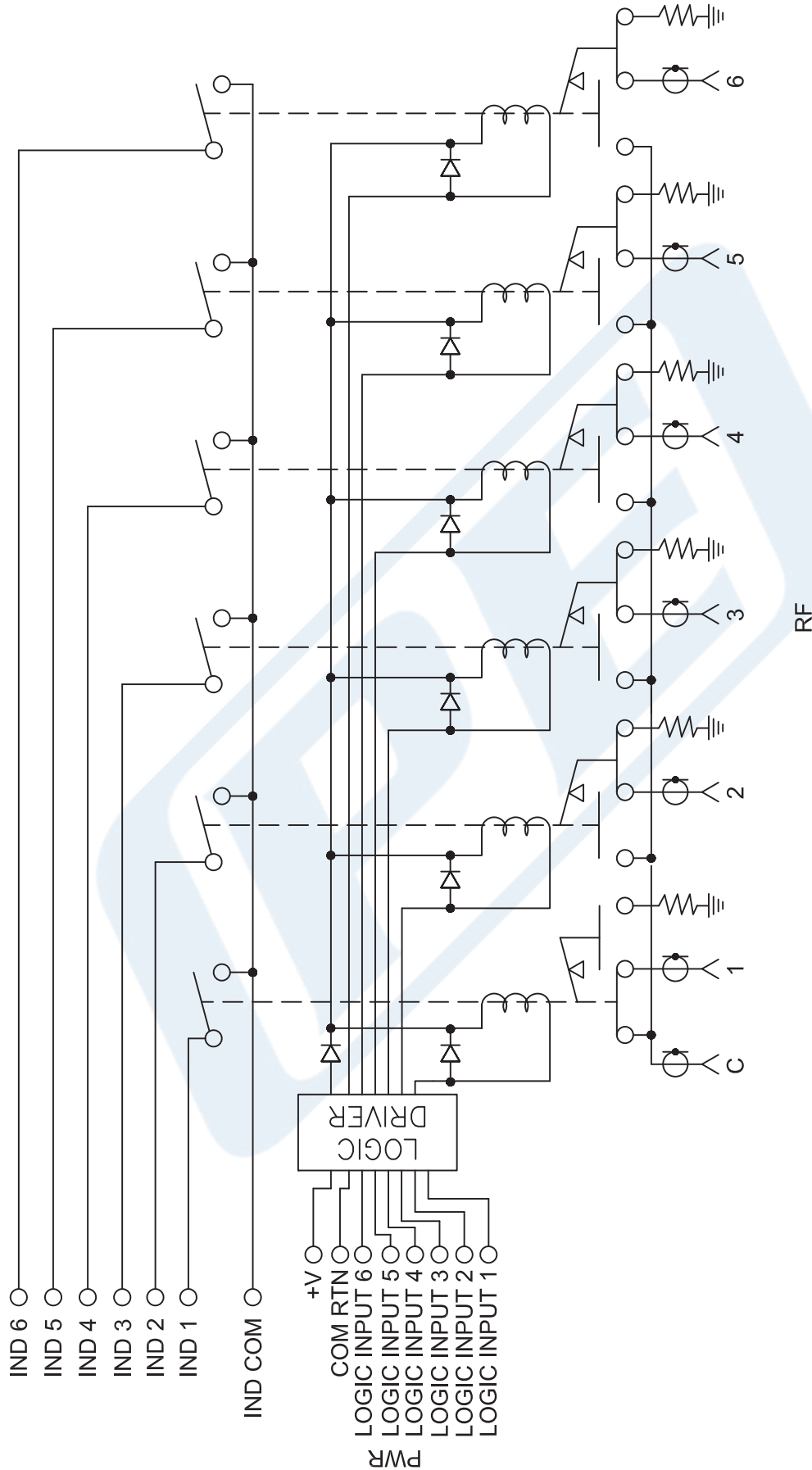
# PE71S6315 CAD Drawing

SP6T Electromechanical Relay Latching Switch DC to 22 GHz, SMA, 20 Watts, 12V Control, Indicators, TTL, Self Cut Off, Diodes



# PE71S6315 CAD Drawing

SP6T Electromechanical Relay Latching Switch DC to 22 GHz, SMA, 20 Watts, 12V Control, Indicators, TTL, Self Cut Off, Diodes



SCHEMATIC LATCHING SELF CUT-OFF SHOWN IN POSITION 1

NOTES:  
 1. UNLESS OTHERWISE SPECIFIED ALL DIMENSIONS ARE NOMINAL.  
 2. ALL SPECIFICATIONS ARE SUBJECT TO CHANGE WITHOUT NOTICE AT ANY TIME.  
 3. DIMENSIONS ARE IN INCHES [mm].

DWG TITLE  
**PE71S6315**

**(PE) PASTERNAK®**  
 THE ENGINEER'S RF SOURCE  
 Pasternack Enterprises, Inc.  
 P.O. Box 16759 | Irvine | CA | 92623  
 Phone: (949) 261-1920 | Fax: (949) 261-7451  
 Website: www.pasternack.com | E-Mail: sales@pasternack.com

CAD FILE 090115 SCALE N/A SIZE A 2233

FSCM NO. 53919