



Low PIM 20dB Fixed Attenuator 4.3-10 female to 4.3-10 female
Black Anodized Aluminum Body to 200 Watts 0.6 GHz to 6 GHz

RF Fixed Attenuators Technical Data Sheet

PE7485-20

Features

- 0.6 to 6 GHz Frequency Range
- 4.3-10 Connectorized Design
- Attenuation 20 dB \pm 2 dB
- Max Power 200 Watt (CW)
- Typical VSWR of 1.3:1
- PIM rating -168 dBc typical

Applications

- Instrumentation
- Precision Measurements
- Prototyping and Characterization
- Production Systems

Description

Pasternack carries a wide range of fixed attenuators with a broad selection of attenuation levels, frequency ranges, and power dissipation ranges. RF microwave attenuators (also known as RF pads) lower the amplitude of a signal (attenuate) a known amount and can be used in a wide variety of applications. These attenuator pads are used when a signal needs to be reduced to protect measurement equipment or other circuitry, to extend the range of power meters and amplifiers, and to impedance match circuits by reducing the VSWR seen by adjacent components. RF attenuators can prevent signal overload in amplifiers, receivers and detectors, adjusting the signal level to a range that is optimal.

Few RF components are as commonly used as fixed coaxial attenuators, and Pasternack carries one of the largest in-stock varieties and ships them same day. The 20 dB Fixed Attenuator PE7485-20 is rated to 200 Watts and operates from 0.6 to 6 GHz. The fixed attenuator offers 1.3:1 VSWR and low PIM (passive intermodulation) rating of -168 dBc typical. The versatile coaxial package uses 4.3-10 female to 4.3-10 female connectors.

Electrical Specifications

| Description | Minimum | Typical | Maximum | Units |
|---|---------|---------|---------|--------|
| Frequency Range | 0.6 | | 6 | GHz |
| Impedance | | 50 | | Ohms |
| Nominal Attenuation | | 20 | | dB |
| Attenuation Accuracy | | 2 | | dB |
| VSWR | | 1.3:1 | | |
| Passive Intermodulation 2x43dBm | | -168 | -160 | dBc |
| Input Power, CW | | | 200 | Watts |
| Input Power, Peak 8% duty cycle, 20us PW | | | 2 | kWatts |

Click the following link (or enter part number in "SEARCH" on website) to obtain additional part information including price, inventory and certifications: [Low PIM 20dB Fixed Attenuator 4.3-10 female to 4.3-10 female Black Anodized Aluminum Body to 200 Watts 0.6 GHz to 6 GHz PE7485-20](#)



Low PIM 20dB Fixed Attenuator 4.3-10 female to 4.3-10 female
 Black Anodized Aluminum Body to 200 Watts 0.6 GHz to 6 GHz

RF Fixed Attenuators Technical Data Sheet

PE7485-20

Mechanical Specifications

Size

| | |
|---------------------------|----------------------------------|
| Length | 6.69 in [169.93 mm] |
| Width/Diameter | 5.12 in [130.05 mm] |
| Height | 4.25 in [107.95 mm] |
| Weight | 4.41 lbs [2 kg] |
| Body Material and Plating | Black Anodized Aluminum Heatsink |

Configuration

| | |
|---------------|--------------------|
| Design | Fixed, Directional |
| Design Type | Low PIM |
| Package Style | Connectorized |

Connectors

| Description | Connector 1 | Connector 2 |
|------------------------------|------------------------|------------------------|
| Type | 4.3-10 Female | 4.3-10 Female |
| Contact Material and Plating | Beryllium Copper, Gold | Beryllium Copper, Gold |
| Body Material and Plating | Brass, Tri-Metal | Brass, Tri-Metal |

Environmental Specifications

Temperature

| | |
|-----------------|--------------------|
| Operating Range | -40 to +75 deg C |
| Storage Range | -50 to +85 deg C |
| Humidity | <95% |
| Shock | IEC 60068-2-27 |
| Vibration | IEC 60068-2-6-Fc |
| Altitude | <5000m |
| Thermal Shock | IEC 60068 -2-14-Na |

Compliance Certifications (see [product page](#) for current document)

Plotted and Other Data

Notes:

Click the following link (or enter part number in "SEARCH" on website) to obtain additional part information including price, inventory and certifications: [Low PIM 20dB Fixed Attenuator 4.3-10 female to 4.3-10 female Black Anodized Aluminum Body to 200 Watts 0.6 GHz to 6 GHz PE7485-20](#)



Low PIM 20dB Fixed Attenuator 4.3-10 female to 4.3-10 female
Black Anodized Aluminum Body to 200 Watts 0.6 GHz to 6 GHz

RF Fixed Attenuators Technical Data Sheet

PE7485-20

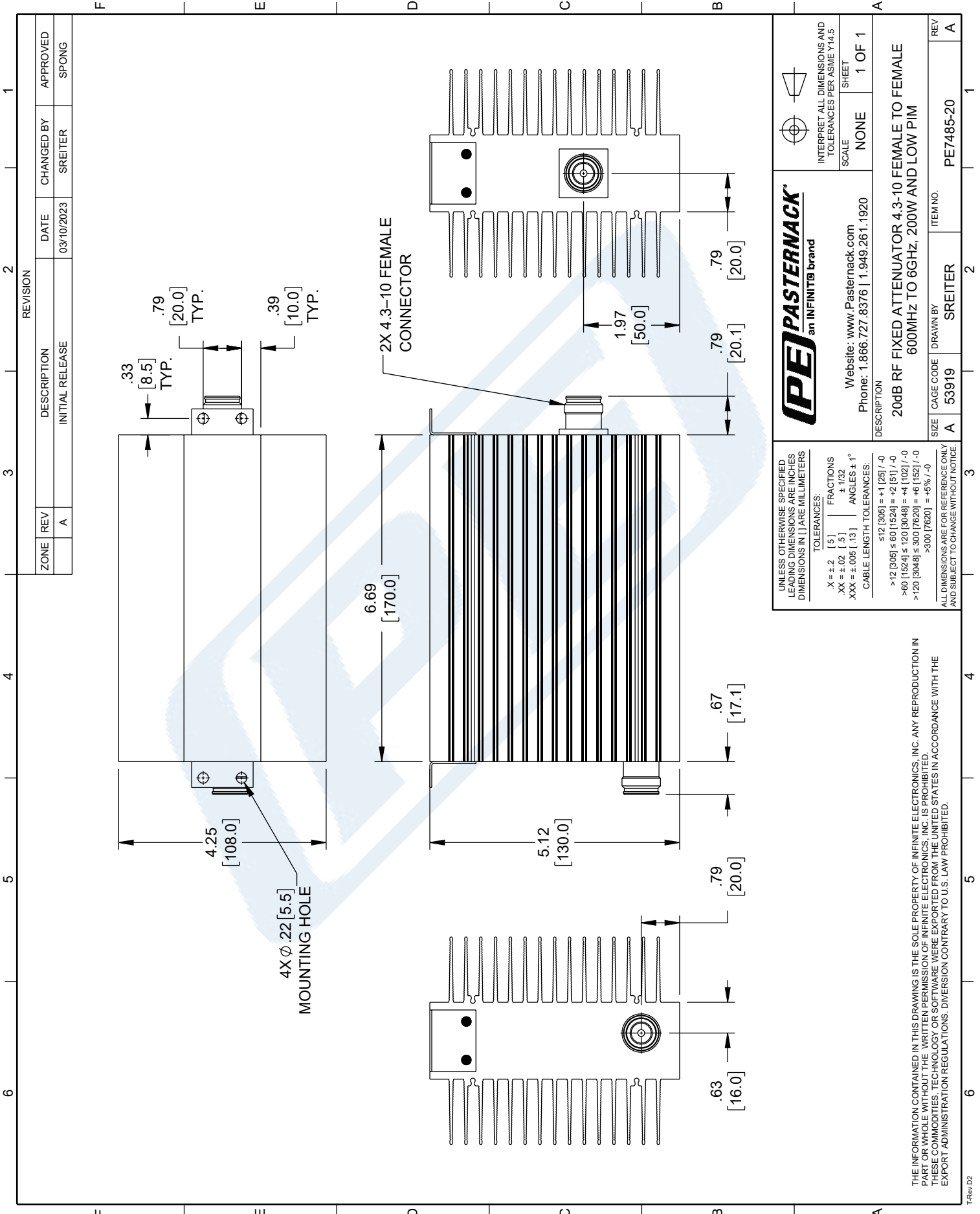
Low PIM 20dB Fixed Attenuator 4.3-10 female to 4.3-10 female Black Anodized Aluminum Body to 200 Watts 0.6 GHz to 6 GHz from Pasternack Enterprises has same day shipment for domestic and International orders. Our RF, microwave and millimeter wave products maintain a 99.4% availability and are part of the broadest selection in the industry.

Click the following link (or enter part number in "SEARCH" on website) to obtain additional part information including price, inventory and certifications: [Low PIM 20dB Fixed Attenuator 4.3-10 female to 4.3-10 female Black Anodized Aluminum Body to 200 Watts 0.6 GHz to 6 GHz PE7485-20](https://www.pasternack.com/20db-fixed-4.3-10-female-4.3-10-female-200-watts-attenuator-pe7485-20-p.aspx)

URL: <https://www.pasternack.com/20db-fixed-4.3-10-female-4.3-10-female-200-watts-attenuator-pe7485-20-p.aspx>

PE7485-20 CAD Drawing

Low PIM 20dB Fixed Attenuator 4.3-10 female to 4.3-10 female Black
Anodized Aluminum Body to 200 Watts 0.6 GHz to 6 GHz



| | | | |
|---|---|--|--|
| PASTERNAK an INFINITIB brand | | INTERPRET ALL DIMENSIONS AND TOLERANCES PER ASME Y14.5 SCALE: NONE SHEET: 1 OF 1 | |
| Website: www.Pasternack.com Phone: 1.866.727.8376 1.949.261.1920 | | DESCRIPTION: 20dB RF FIXED ATTENUATOR 4.3-10 FEMALE TO FEMALE 600MHz TO 6GHz, 200W AND LOW PIM | |
| UNLESS OTHERWISE SPECIFIED LEADING DIMENSIONS ARE INCHES DIMENSIONS IN [] ARE MILLIMETERS TOLERANCES: X = ±.2 [5] FRACTIONS ±.1/32 .XX = ±.02 [0.5] ANGLES ± 1° .XXX = ±.005 [0.13] CABLE LENGTH TOLERANCES: ≤12 [305] = +1 [25] / -0 >12 [305] ≤ 60 [1524] = +2 [51] / -0 >60 [1524] ≤ 120 [3048] = +4 [102] / -0 >120 [3048] ≤ 300 [7620] = +6 [152] / -0 >300 [7620] = +5% / -0 ALL DIMENSIONS ARE FOR REFERENCE ONLY AND SUBJECT TO CHANGE WITHOUT NOTICE. | SIZE: A CAGE CODE: 53919 DRAWN BY: SREITER ITEM NO.: PE7485-20 | REV: A APPROVED: SPONG | |

THE INFORMATION CONTAINED IN THIS DRAWING IS THE SOLE PROPERTY OF INFINITE ELECTRONICS, INC. ANY REPRODUCTION IN PART OR WHOLE WITHOUT THE WRITTEN PERMISSION OF INFINITE ELECTRONICS, INC. IS PROHIBITED. THESE COMMODITIES, TECHNOLOGY OR SOFTWARE WERE EXPORTED FROM THE UNITED STATES IN ACCORDANCE WITH THE EXPORT ADMINISTRATION REGULATIONS. DIVERSION CONTRARY TO U.S. LAW PROHIBITED.