

6 dB Fixed Attenuator SMA Male to SMA Female Passivated Stainless Steel Body Rated 2 Watt DC to 18 GHz



PE7620-6

Features

- DC to 18 GHz Frequency Range
- SMA Connectorized Design
- Attenuation 6 dB \pm 1 dB
- Max Power 2 Watts (CW)
- Max VSWR of 1.3:1

Applications

- Instrumentation
- Precision Measurements
- Prototyping and Characterization
- Production Systems

Description

Pasternack carries a wide range of fixed attenuators with a broad selection of attenuation levels, frequency ranges, and power dissipation ranges. RF microwave attenuators (also known as RF pads) lower the amplitude of a signal (attenuate) a known amount and can be used in a wide variety of applications. These attenuator pads are used when a signal needs to be reduced to protect measurement equipment or other circuitry, to extend the range of power meters and amplifiers, and to impedance match circuits by reducing the VSWR seen by adjacent components. RF attenuators can prevent signal overload in amplifiers, receivers and detectors, adjusting the signal level to a range that is optimal.

Few RF components are as commonly used as fixed coaxial attenuators, and Pasternack carries one of the largest in-stock varieties and ships them same day. The 6 dB Fixed Attenuator PE7620-6 is rated to 2 Watts and operates from DC to 18 GHz. The versatile coaxial package uses SMA male to SMA female connectors and is also REACH compliant.

Electrical Specifications

Description	Minimum	Typical	Maximum	Units
Frequency Range	DC		18	GHz
Impedance		50		Ohms
Nominal Attenuation		6		dB
Attenuation Accuracy		\pm 0.5	\pm 1	dB
VSWR			1.3:1	
Input Power, CW			2	Watts
Derated linearly to 0.5W @ 125°C				
Input Power, Peak			500	Watts
5 μ Sec PW, 0.4% duty cycle				

Mechanical Specifications

Size

Length	0.86 in [21.84 mm]
Width/Diameter	0.31 in [7.87 mm]
Height	0.31 in [7.87 mm]
Weight	0.01 lbs [4.54 g]
Body Material and Plating	Stainless Steel

Configuration

Design	Fixed, Bidirectional
Package Style	Connectorized

6 dB Fixed Attenuator SMA Male to SMA Female Passivated
Stainless Steel Body Rated 2 Watt DC to 18 GHz



PE7620-6

Connectors

Description	Connector 1	Connector 2
Type	SMA Male	SMA Female
Contact Material and Plating	Brass, Gold	Beryllium Copper, Gold
Body Material and Plating	Stainless Steel	Stainless Steel

Environmental Specifications

Temperature

Operating Range -55 to +125 deg C

Compliance Certifications (see [product page](#) for current document)

Plotted and Other Data

Notes:

Typical Performance Data

6 dB Fixed Attenuator SMA Male to SMA Female Passivated Stainless Steel Body Rated 2 Watt DC to 18 GHz from Pasternack Enterprises has same day shipment for domestic and International orders. Our RF, microwave and millimeter wave products maintain a 99.4% availability and are part of the broadest selection in the industry.

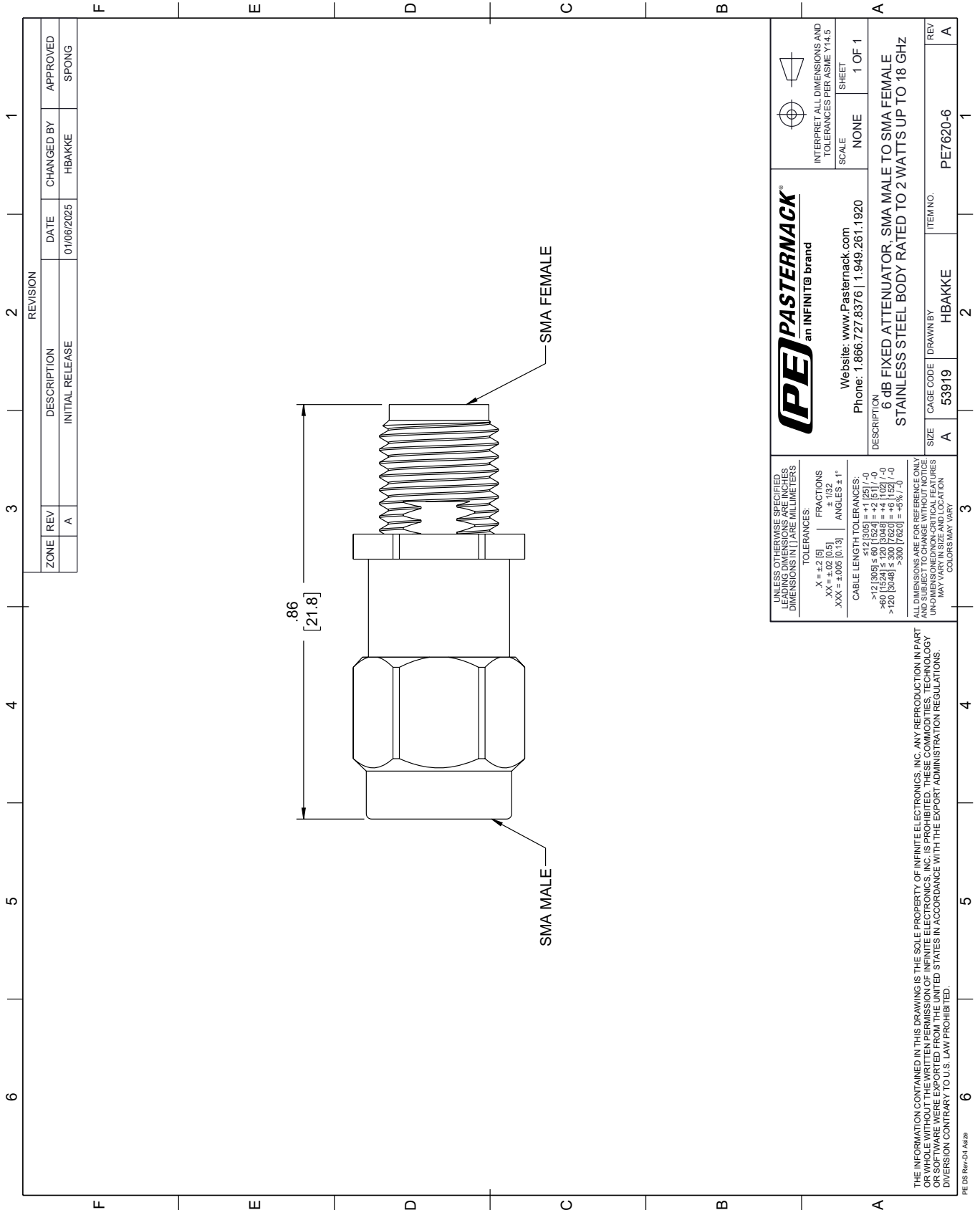
Click the following link (or enter part number in "SEARCH" on website) to obtain additional part information including price, inventory and certifications: [6 dB Fixed Attenuator SMA Male to SMA Female Passivated Stainless Steel Body Rated 2 Watt DC to 18 GHz PE7620-6](#)

URL: <https://www.pasternack.com/6db-fixed-sma-male-sma-female-2-watts-attenuator-pe7620-6-p.aspx>

The information contained within this document is accurate to the best of our knowledge and representative of the part described herein. It may be necessary to make modifications to the part and/or the documentation of the part in order to implement improvements. Pasternack Enterprises reserves the right to make such changes as required. Unless otherwise stated, all specifications are nominal. Pasternack Enterprises does not make any representation or warranty regarding the suitability of the part described herein for any particular purpose, and Pasternack Enterprises does not assume liability arising out of the use of any part or document.

PE7620-6 CAD Drawing

6 dB Fixed Attenuator SMA Male to SMA Female Passivated Stainless Steel Body Rated 2 Watt DC to 18 GHz



ZONE		REV	DESCRIPTION	DATE	CHANGED BY	APPROVED
A		A	INITIAL RELEASE	01/06/2025	HBAKKE	SPONG

(PE) PASTERNAK®
an INFINITI® brand

Website: www.Pasternack.com
Phone: 1.866.727.8376 | 1.949.261.1920

INTERPRET ALL DIMENSIONS AND TOLERANCES PER ASME Y14.5
SCALE: NONE
SHEET: 1 OF 1

DESCRIPTION:
6 dB FIXED ATTENUATOR, SMA MALE TO SMA FEMALE
STAINLESS STEEL BODY RATED TO 2 WATTS UP TO 18 GHz

SIZE	CAGE CODE	DRAWN BY	ITEM NO.
A	53919	HBAKKE	PE7620-6

UNLESS OTHERWISE SPECIFIED, LEADING DIMENSIONS ARE IN INCHES AND DIMENSIONS IN [] ARE MILLIMETERS

TOLERANCES:
 .X = ±.2 [5]
 .XX = ±.02 [0.5]
 .XXX = ±.005 [0.13]
 FRACTIONS ± 1/32
 ANGLES ± 1°

CABLE LENGTH TOLERANCES:
 <12 [305] ≤ 60 [1524] = +.1 [25] / -0
 >60 [1524] ≤ 120 [3048] = +.4 [102] / -0
 >120 [3048] ≤ 300 [7620] = +.5% / -0

ALL DIMENSIONS ARE FOR REFERENCE ONLY. UNLESS OTHERWISE SPECIFIED, DIMENSIONS ARE IN INCHES AND DIMENSIONS IN [] ARE MILLIMETERS. COLORS MAY VARY.

THE INFORMATION CONTAINED IN THIS DRAWING IS THE SOLE PROPERTY OF INFINITE ELECTRONICS, INC. ANY REPRODUCTION IN PART OR WHOLE WITHOUT THE WRITTEN PERMISSION OF INFINITE ELECTRONICS, INC. IS PROHIBITED. THESE COMMODITIES, TECHNOLOGY OR SERVICES ARE NOT EXPORTED FROM THE UNITED STATES IN ACCORDANCE WITH THE EXPORT ADMINISTRATION REGULATIONS. DIVERSION CONTRARY TO U.S. LAW PROHIBITED.

PE DS Rev-D4 Add2