



SP2T SMA Manual Toggle Switch DC to 18 GHz, Rated to 40 Watts

Manual Switches Technical Data Sheet

PE7SM1001

Features

- SP2T
- Manual Toggle Switch
- 60 dB min Isolation
- DC to 18 GHz
- Low VSWR
- SMA Female Connectors

Applications

- Test and Measurements
- Redundancy Systems
- Manual Switching between antenna bands
- OEM Front Panel Control

Description

PE7SM1001 is a manual single pole double throw (SP2T) RF coaxial Switch, with a manual toggle actuator configuration. This unit operates across the DC to 18 GHz Frequency Range with a max VSWR of 1:51 and a maximum Insertion Loss of 0.3 dB. It features a housing with SMA female connectors and a minimum Isolation of 60dB

Electrical Specifications

Actuator Type Manual Toggle
 Selector Type SMA Female
 RF Connector Type SMA Female

Description	Minimum	Typical	Maximum	Units
Frequency Range	DC		18	GHz
VSWR			1.5:1	
Isolation	60			dB

Performance by Frequency

Description	F1	F2	F3	F4	F5	Units
Frequency Range	DC to 4	4 to 12.4	12.4 to 18			GHz
VSWR, Max	1.2:1	1.3:1	1.5:1			
Insertion Loss, Max	0.1	0.2	0.3			dB
Isolation, Min	80	70	60			dB
Input Power, Max (CW)	80	45	40			Watts

Click the following link (or enter part number in "SEARCH" on website) to obtain additional part information including price, inventory and certifications: [SP2T SMA Manual Toggle Switch DC to 18 GHz, Rated to 40 Watts PE7SM1001](#)



SP2T SMA Manual Toggle Switch DC to
18 GHz, Rated to 40 Watts

Manual Switches Technical Data Sheet

PE7SM1001

Mechanical Specifications

Size

Length	1.34 in [34.04 mm]
Width/Diameter	0.5 in [12.7 mm]
Height	1.97 in [50.04 mm]
Weight	0.01 lbs [4.54 g]

Connectors

RF Connector Type	SMA Female
-------------------	------------

Environmental Specifications

Compliance Certifications (see [product page](#) for current document)

Plotted and Other Data

Notes:

SP2T SMA Manual Toggle Switch DC to 18 GHz, Rated to 40 Watts from Pasternack Enterprises has same day shipment for domestic and International orders. Our RF, microwave and millimeter wave products maintain a 99.4% availability and are part of the broadest selection in the industry.

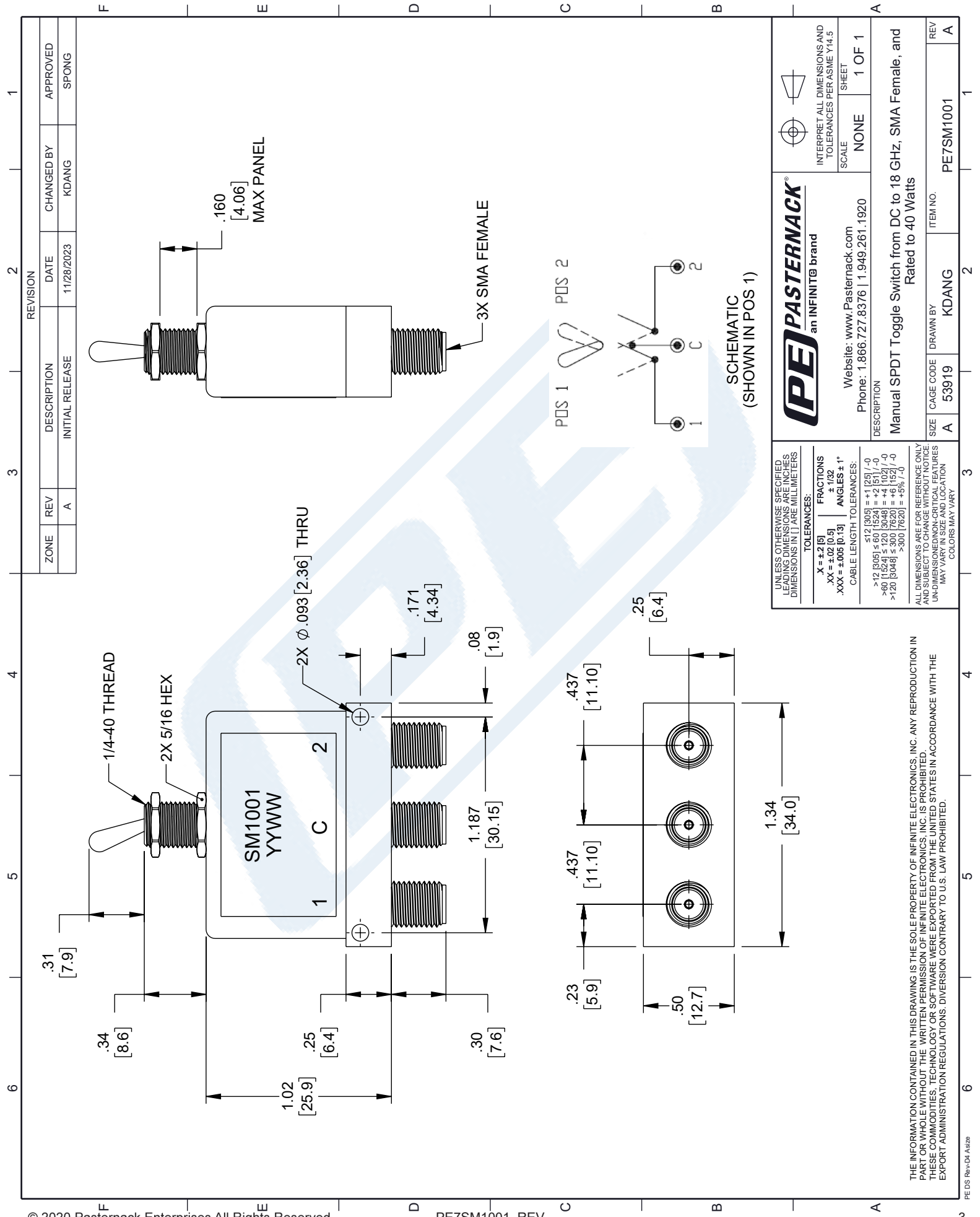
Click the following link (or enter part number in "SEARCH" on website) to obtain additional part information including price, inventory and certifications: [SP2T SMA Manual Toggle Switch DC to 18 GHz, Rated to 40 Watts PE7SM1001](#)

URL: <https://www.pasternack.com/0-port-sma-manual-coaxial-switch-surge-protection-dc-18-ghz-0watts-pe7sm1001-p.aspx>

The information contained in this document is accurate to the best of our knowledge and representative of the part described herein. It may be necessary to make modifications to the part and/or the documentation of the part, in order to implement improvements. Pasternack reserves the right to make such changes as required. Unless otherwise stated, all specifications are nominal. Pasternack does not make any representation or warranty regarding the suitability of the part described herein for any particular purpose, and Pasternack does not assume any liability arising out of the use of any part or documentation.

PE7SM1001 CAD Drawing

SP2T SMA Manual Toggle Switch DC to 18 GHz, Rated to 40 Watts



ZONE	REV	DESCRIPTION	DATE	CHANGED BY	APPROVED
	A	INITIAL RELEASE	11/28/2023	KDANG	SPONG

		INTERPRET ALL DIMENSIONS AND TOLERANCES PER ASME Y14.5 SCALE NONE SHEET 1 OF 1
Website: www.Pasternack.com Phone: 1.866.727.8376 1.949.261.1920		
DESCRIPTION Manual SP2T Toggle Switch from DC to 18 GHz, SMA Female, and Rated to 40 Watts		
SIZE A CAGE CODE 53919 DRAWN BY KDANG	ITEM NO. PE7SM1001	REV A

UNLESS OTHERWISE SPECIFIED LEADING DIMENSIONS ARE INCHES DIMENSIONS IN [] ARE MILLIMETERS

TOLERANCES:

.X = ±.2 [5]	FRACTIONS ± 1/32
.XX = ±.02 [0.5]	ANGLES ± 1°
.XXX = ±.005 [0.13]	CABLE LENGTH TOLERANCES:
	<12 [305] = ±.1 [2.5] / -0
	>12 [305] ≤ 60 [1524] = ±.2 [5.1] / -0
	>60 [1524] ≤ 120 [3048] = +.4 [10.2] / -0
	>120 [3048] ≤ 300 [7620] = +.6 [15.2] / -0
	>300 [7620] = +.5% / -0

ALL DIMENSIONS ARE FOR REFERENCE ONLY UNLESS OTHERWISE SPECIFIED. UNDIMENSIONED NON-CRITICAL FEATURES MAY VARY IN SIZE AND LOCATION. COLORS MAY VARY.

THE INFORMATION CONTAINED IN THIS DRAWING IS THE SOLE PROPERTY OF INFINITE ELECTRONICS, INC. ANY REPRODUCTION IN PART OR WHOLE WITHOUT THE WRITTEN PERMISSION OF INFINITE ELECTRONICS, INC. IS PROHIBITED. THESE COMMODITIES, TECHNOLOGY OR SOFTWARE WERE EXPORTED FROM THE UNITED STATES IN ACCORDANCE WITH THE EXPORT ADMINISTRATION REGULATIONS. DIVERSION CONTRARY TO U.S. LAW PROHIBITED.