

Adjustable Phase Shifter, DC to 8GHz, With an Adjustable Phase of 90 Deg. Per GHz and SMA

Phase Shifters and Trimmers Technical Data Sheet

PE82P5009

Features

- Phase Tuning Range: 0 to 720 degrees
- Rotary Dial Design for Continuous Adjustment
- Frequency Range from DC to 8GHz
- SMA Female Connectorized Design
- Max VSWR 1.5:1
- Max Power Rating: 100 Watts (CW)
- Insertion Loss: 1.5 dB Max

Applications

- Test & Measurements
- Radar Development
- Military Communications Systems
- Phase Array Antenna System
- Satellite Communications

Description

Pasternack's PE82P5009 is a phase shifter that has phase adjustment range of 90 degrees per GHz with precision rotary dial design for controllable phase adjustment across a frequency range from 0 to 8GHz. With SMA female connectors, this RF phase shifter design is tried and true technology that offers exceptional RF performance characteristics that include 1.5 dB maximum insertion loss and a maximum VSWR of 1.5:1. Phase shifters are part of Pasternack's comprehensive RF passive product offerings which are available in stock and ready for same-day shipment.

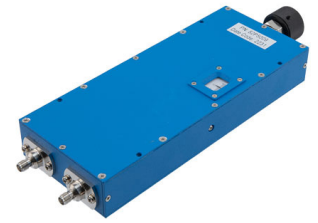
Electrical Specifications (Values at +25° C, Sea Level)

Description	Minimum	Typical	Maximum	Units
Frequency Range	DC		8	GHz
Impedance		50		Ohms
Phase Shift	0		720	Degrees
Phase Adjustment	0		90	Deg/GHz
Input VSWR			1.5:1	
Insertion Loss			1.5	dB
Input Power, CW			100	Watts
Input Power, Peak 5µs pulse, 2% duty cycle			5	kWatts

Mechanical Specifications

Size	
Length	9.29 in [235.97 mm]
Width/Diameter	2.99 in [75.95 mm]
Height	1.2 in [30.48 mm]
Weight	2.5 lbs [1.13 kg]
Body Material and Plating	Aluminum

Click the following link (or enter part number in "SEARCH" on website) to obtain additional part information including price, inventory and certifications: [Adjustable Phase Shifter, DC to 8GHz, With an Adjustable Phase of 90 Deg. Per GHz and SMA PE82P5009](#)



Adjustable Phase Shifter, DC to 8GHz, With an Adjustable Phase of 90 Deg. Per GHz and SMA

Phase Shifters and Trimmers Technical Data Sheet

PE82P5009

Configuration

Input Connector	SMA Female
Output Connector	SMA Female

Environmental Specifications

Temperature

Operating Range	-10 to 50 deg C
Storage Range	-40 to 70 deg C

Compliance Certifications (see [product page](#) for current document)

Plotted and Other Data

Notes:

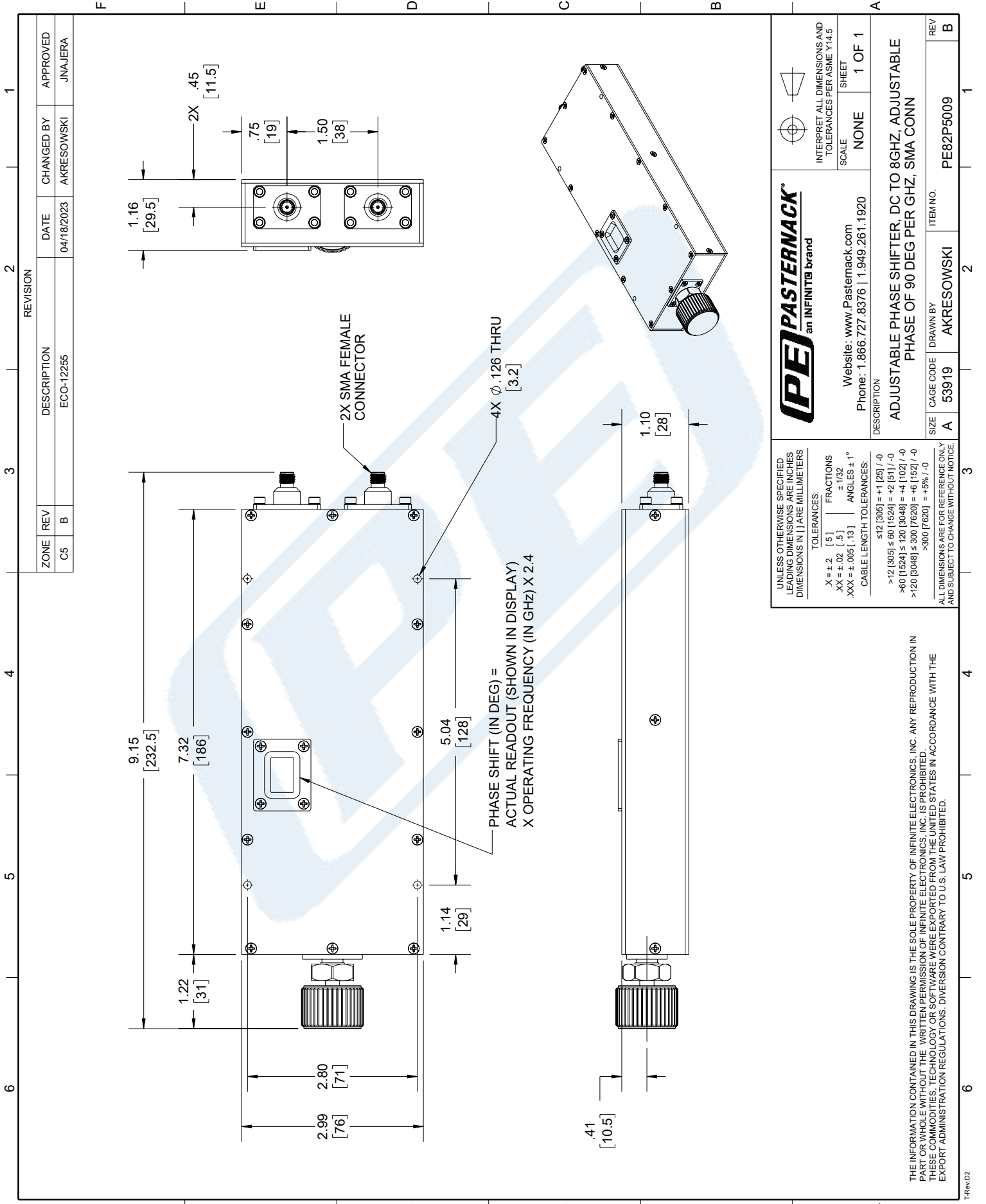
Adjustable Phase Shifter, DC to 8GHz, With an Adjustable Phase of 90 Deg. Per GHz and SMA from Pasternack Enterprises has same day shipment for domestic and International orders. Our RF, microwave and millimeter wave products maintain a 99.4% availability and are part of the broadest selection in the industry.

Click the following link (or enter part number in "SEARCH" on website) to obtain additional part information including price, inventory and certifications: [Adjustable Phase Shifter, DC to 8GHz, With an Adjustable Phase of 90 Deg. Per GHz and SMA PE82P5009](#)

URL: <https://www.pasternack.com/adjustable-phase-shifter-8-ghz-90-deg-per-ghz-sma-pe82p5009-p.aspx>

PE82P5009 CAD Drawing

Adjustable Phase Shifter, DC to 8GHz, With an Adjustable Phase of 90 Deg. Per GHz and SMA



REVISION		DATE	CHANGED BY	APPROVED
ZONE	REV	DESCRIPTION		
C5	B	ECO-12255	AKRESOWSKI	JNAJERA

PE PASTERNAK
an INFINITO brand

Website: www.Pasternack.com
Phone: 1.866.727.8376 | 1.949.261.1920

INTERPRET ALL DIMENSIONS AND TOLERANCES PER ASME Y14.5

SCALE: NONE

SHEET: 1 OF 1

UNLESS OTHERWISE SPECIFIED LEADING DIMENSIONS ARE INCHES DIMENSIONS IN [] ARE MILLIMETERS

TOLERANCES:

X = ± .2	[5]	FRACTIONS	± 1/32
.XX = ± .02	[.5]	ANGLES ± 1°	
.XXX = ± .005	[.13]	CABLE LENGTH TOLERANCES:	

±12 [305] = +1 [25] / -0
 >12 [305] ≤ 60 [1524] = +2 [51] / -0
 >60 [1524] ≤ 120 [3048] = +4 [102] / -0
 >120 [3048] ≤ 300 [7620] = +8 [152] / -0
 >300 [7620] = +5% / -0

ALL DIMENSIONS ARE FOR REFERENCE ONLY AND SUBJECT TO CHANGE WITHOUT NOTICE